

# Birchgrove Wharf upgrade



An artist's impression of the proposed new Birchgrove Wharf viewed from the water

## COMMUNITY UPDATE 4

OCTOBER 2017

The NSW Government is upgrading Birchgrove Wharf as part of the Transport Access Program. Following feedback from the community the Review of Environmental Factors for the project has been finalised and work to upgrade the wharf will start on **Tuesday 17 October 2017**.

The upgrade is part of the major progressive upgrade of ferry wharves across Sydney Harbour.

This update provides important information about what to expect during the construction of the new Birchgrove Wharf.

Birchgrove Wharf will be closed for upgrade from **Tuesday 17 October** for about five months, weather and maritime conditions permitting. Birchgrove Wharf will be closed during the wharf upgrade. Customers will be able to catch the 441 bus service, operating between Grove Street Birchgrove and the QVB, to the city or to connect with other bus services on Victoria Road.

The closest wharf to connect to ferry services is Balmain Wharf.

The temporary closure of Birchgrove Wharf will not affect the timetable for ferry services to other wharves. All efforts will be made to reopen the wharf as soon as possible.

The Birchgrove Wharf design has been developed following feedback from the community and aims to balance factors including safety, accessibility, efficient ferry operations and environmental impacts. The final Review of Environmental Factors went on display for comment in August 2017.

Roads and Maritime Services received seven submissions relating to the proposal and have prepared a submissions report which summarises the feedback and responses. The Review of Environmental Factors and submissions report can be viewed at [rms.nsw.gov.au/birchgrove-wharf](https://rms.nsw.gov.au/birchgrove-wharf).

The new Birchgrove Wharf will provide:

- ▶ protection from the wind, rain and sun
- ▶ improved seating and waiting areas
- ▶ improved safety for customers
- ▶ quicker and more efficient ferry boarding and disembarking
- ▶ effective wayfinding signage and lighting.

### WHAT TO EXPECT DURING THE UPGRADE

Construction activities will include:

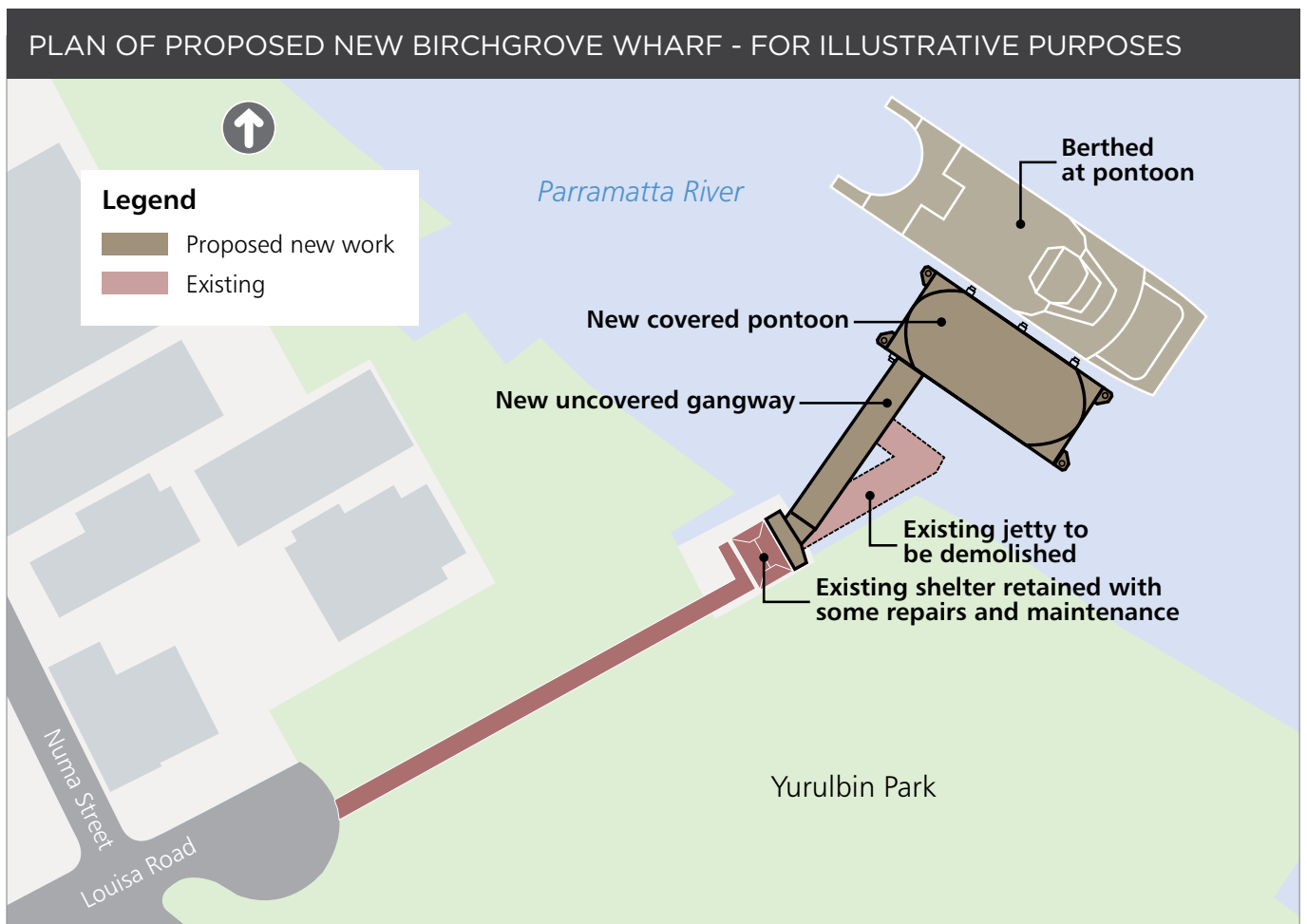
- ▶ site establishment
- ▶ removal of existing timber jetty and tidal steps
- ▶ installation of steel piles
- ▶ installation of a small section of bridge structure which will connect the existing waiting structure to the gangway and covered pontoon waiting shelter, gangway and covered pontoon
- ▶ new wharf fit out
- ▶ installation of new seating and glass weather screening on the pontoon
- ▶ some repairs and maintenance on the existing waiting shelter.

Construction will take about five months to complete, weather and maritime conditions permitting. A temporary construction site compound will be established near the wharf for the duration of the project. The area will be fenced off and restricted to authorised personnel and visitors.

The standard work hours will be between 7am and 6pm Monday to Friday and between 8am and 1pm Saturday. Some early morning or night work may be needed to install piles and lift sections of the wharf in place, when the water is at its calmest. Some of this work will generate noise. We will notify nearby residents and businesses prior to any early morning or night work taking place.



The existing wharf

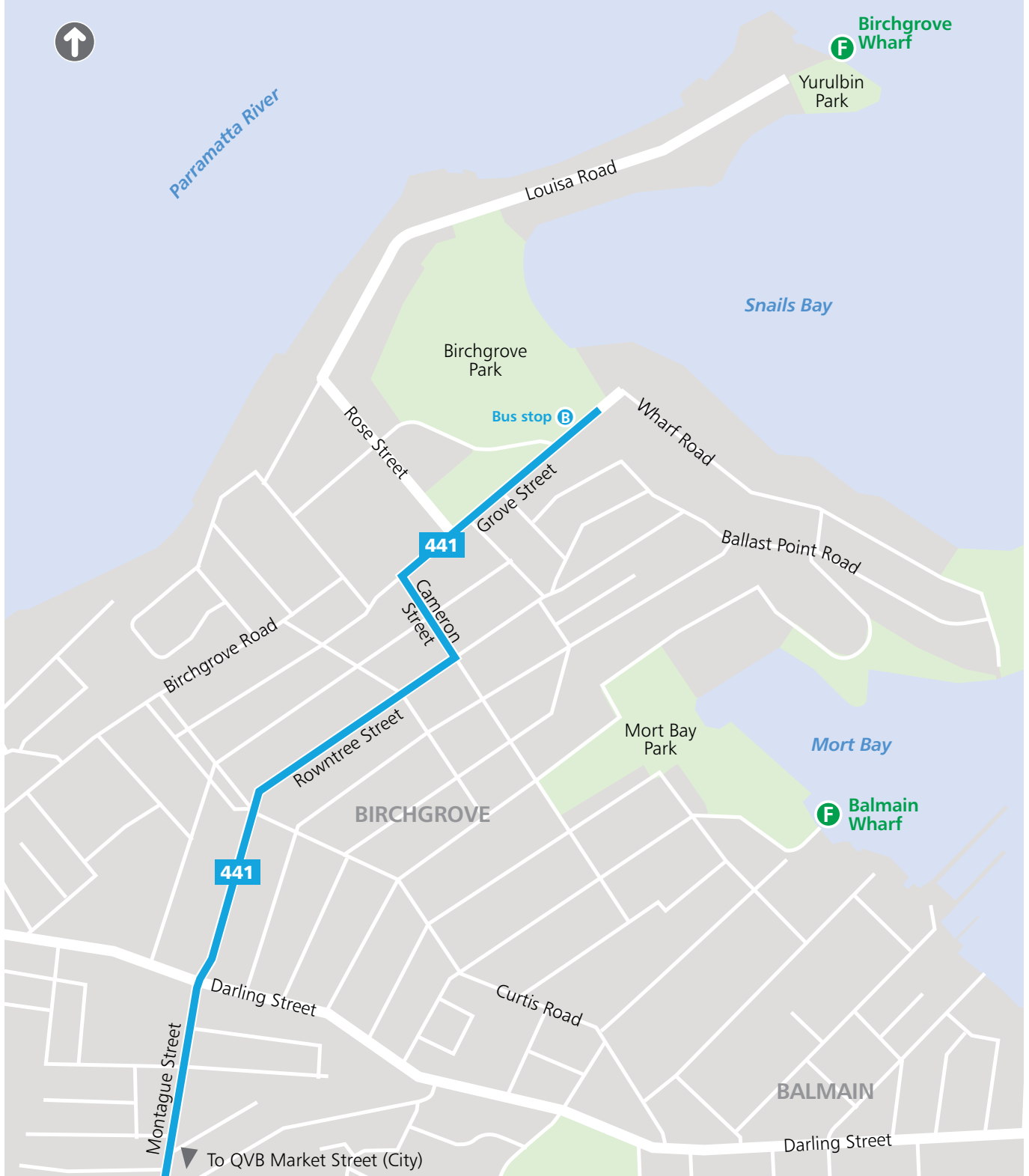


## ALTERNATIVE TRANSPORT DURING CONSTRUCTION

Birchgrove Wharf will be closed during the wharf upgrade. Customers will be able to catch the **441** bus service, operating between Grove Street Birchgrove and the QVB, to the city or to connect with other bus services on Victoria Road. The closest wharf to connect to ferry services is Balmain Wharf. The temporary closure of Birchgrove Wharf will not affect the timetable for ferry services to other wharves.

## PLAN YOUR TRIP

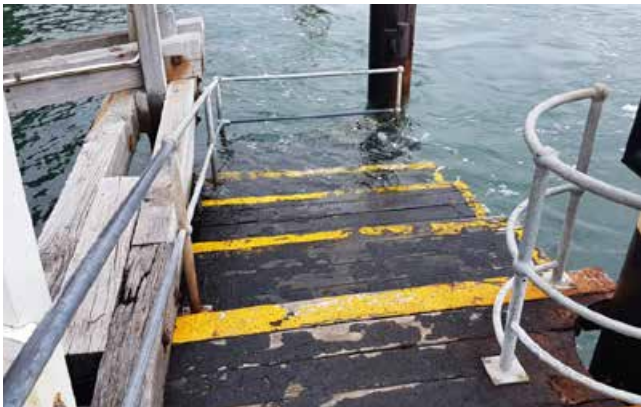
Customers are encouraged to allow extra time for their journeys and to plan their trip by visiting [transportsw.info](http://transportsw.info) or calling Transport Info on 131 500.







The existing wharf and waiting shed at Birchgrove Wharf



Existing tidal stairs at Birchgrove Wharf

## CONTACT THE TEAM

If you would like further information about the Birchgrove Wharf upgrade you can:

Phone: **1800 770 973**

Email: **wharfupgradeprogram@rms.nsw.gov.au**

Visit the Roads and Maritime Services website: **rms.nsw.gov.au/wharfupgrades**



## Translating and Interpreting Service

If you need an interpreter, please call the Translating and Interpreting Service (TIS National) on **131 450** and ask them to telephone Roads and Maritime Services on 1800 770 973.

### Arabic

إذا كنتم بحاجة إلى مترجم، الرجاء الاتصال بخدمة الترجمة الخطية والشفهية (TIS National) على الرقم **131 450**، والطلب منهم الاتصال بوكالتكم على الرقم 1800 770 973.

### Cantonese

若你需要口譯員，請致電 **131 450** 聯絡翻譯和口譯服務署 (TIS National)，要求他們致電 1800 770 973 聯絡 Roads and Maritime Services。

### Mandarin

如果你需要口译员，请致电 **131 450** 联系翻译和口译服务署 (TIS National)，要求他们致电 1800 770 973 联系 Roads and Maritime Services。

### Greek

Αν χρειάζεστε διερμηνέα, παρακαλείστε να τηλεφωνήσετε στην Υπηρεσία Μετάφρασης και Διερμηνείας (Εθνική Υπηρεσία TIS) στο **131 450** και ζητήστε να τηλεφωνήσουν Roads and Maritime Services στο 1800 770 973.

### Italian

Se desiderate l'assistenza di un interprete, prego telefonare al Servizio Interpreti e Traduttori (TIS National) al **131 450** chiedendo di contattare Roads and Maritime Services al 1800 770 973.

### Korean

통역사가 필요하시면 번역통역서비스 (TIS National)에 **131 450** 으로 연락하여 이들에게 1800 770 973 번으로 Roads and Maritime Services 에 전화하도록 요청하십시오.

### Vietnamese

Nếu cần thông ngôn viên, xin quý vị gọi cho Dịch Vụ Thông Phiên Dịch (TIS Toàn Quốc) qua số **131 450** và nhờ họ gọi cho Roads and Maritime Services qua số 1800 770 973.

