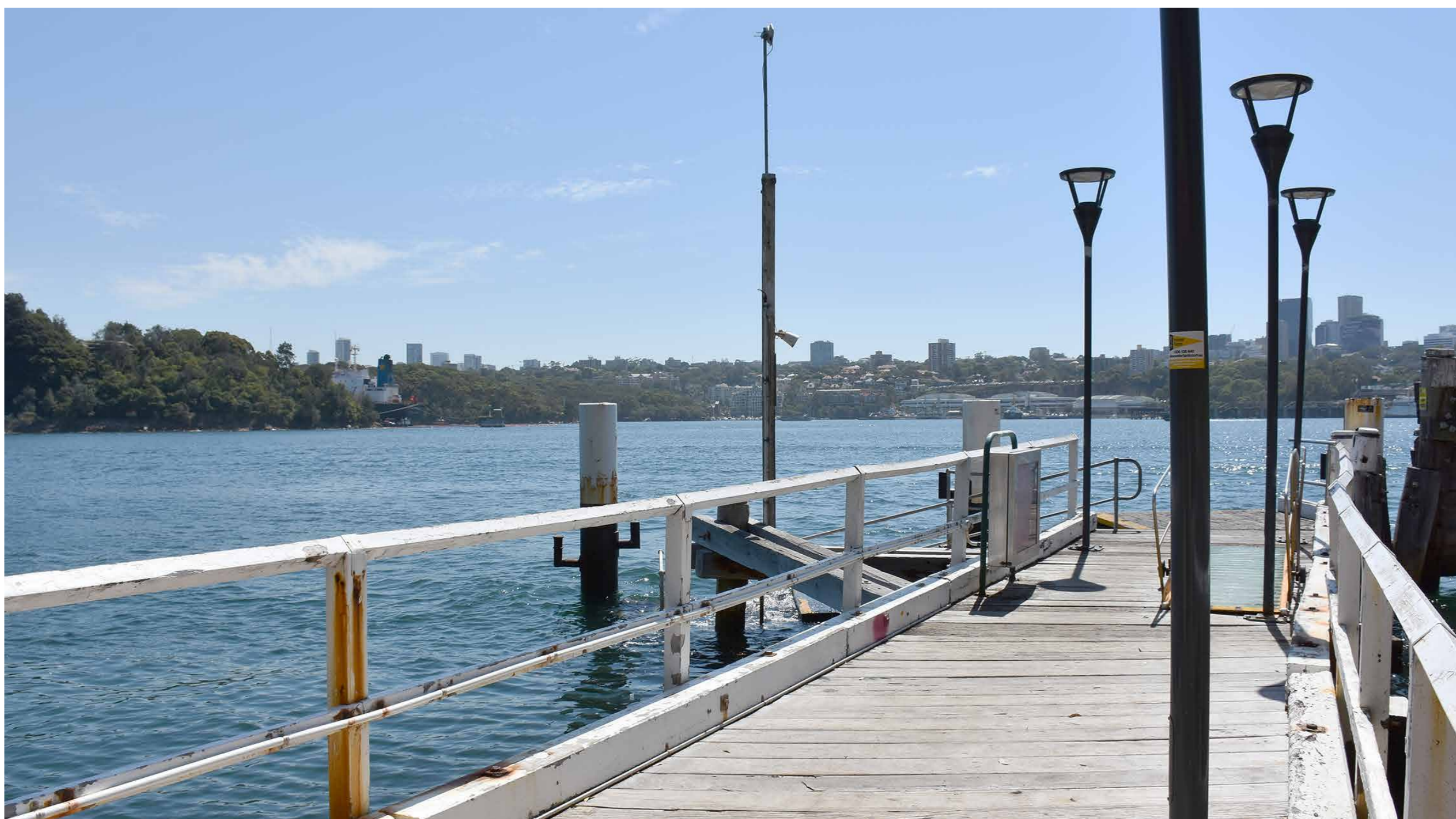


Birchgrove Wharf upgrade

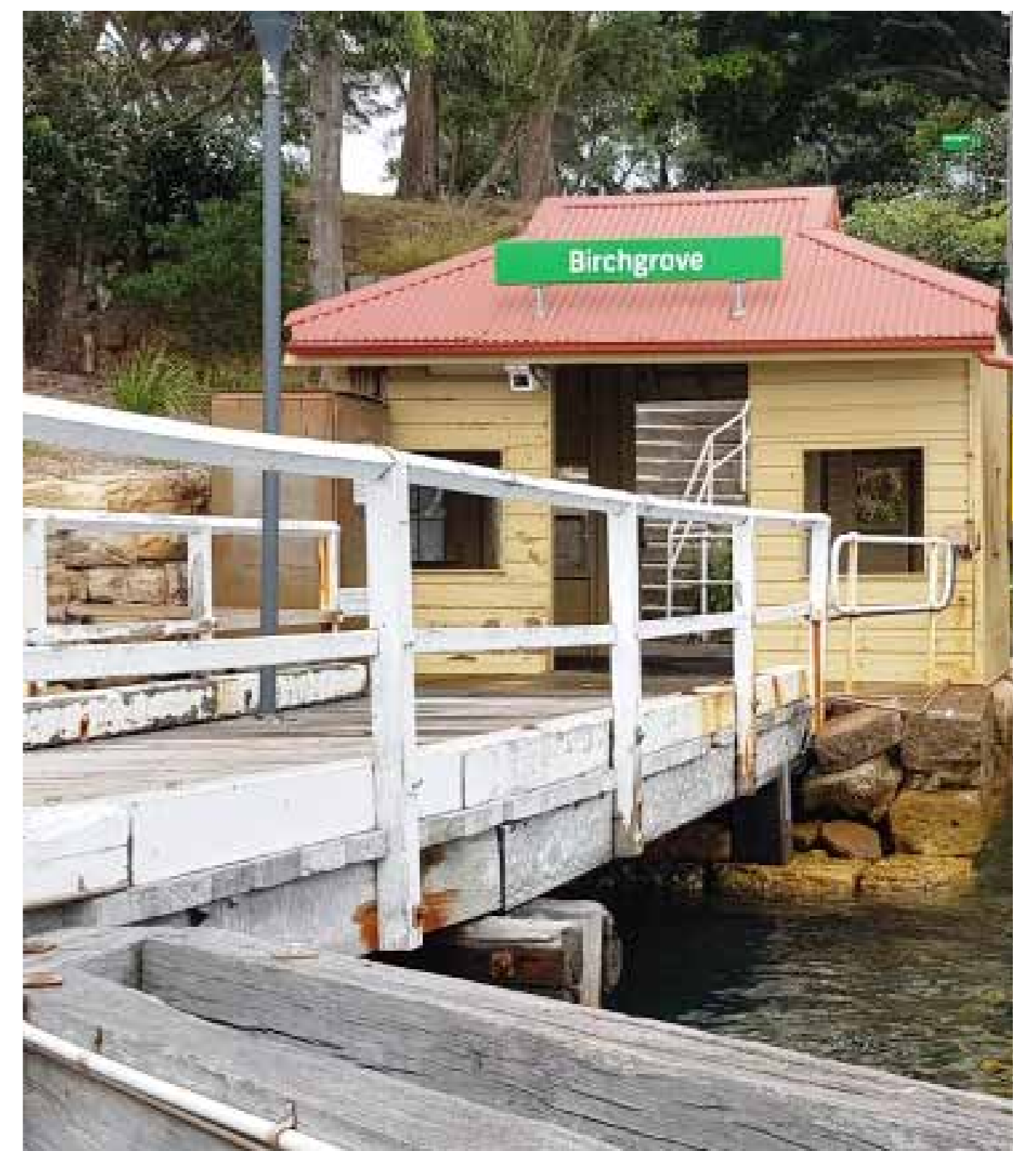
OVERVIEW

February 2017

The NSW Government is upgrading Birchgrove Wharf as part of the Transport Access Program.



The existing Birchgrove Wharf



The existing timber waiting shed

The proposed upgrade of Birchgrove Wharf is part of a wider program of transport improvements for the Parramatta River, with upgraded wharves, new ferries and increased ferry services planned for the area.

Transport for NSW is improving Sydney's ferry services for customers. New and upgraded wharves and interchanges are being delivered as part of the NSW Government's Transport Access Program. This program has most recently delivered upgraded facilities at Cremorne Point, Mosman Bay, Balmain East, Pyrmont, Meadowbank and McMahons Point and work to upgrade Chiswick Wharf began in February 2017.

The Birchgrove Wharf upgrade would provide:

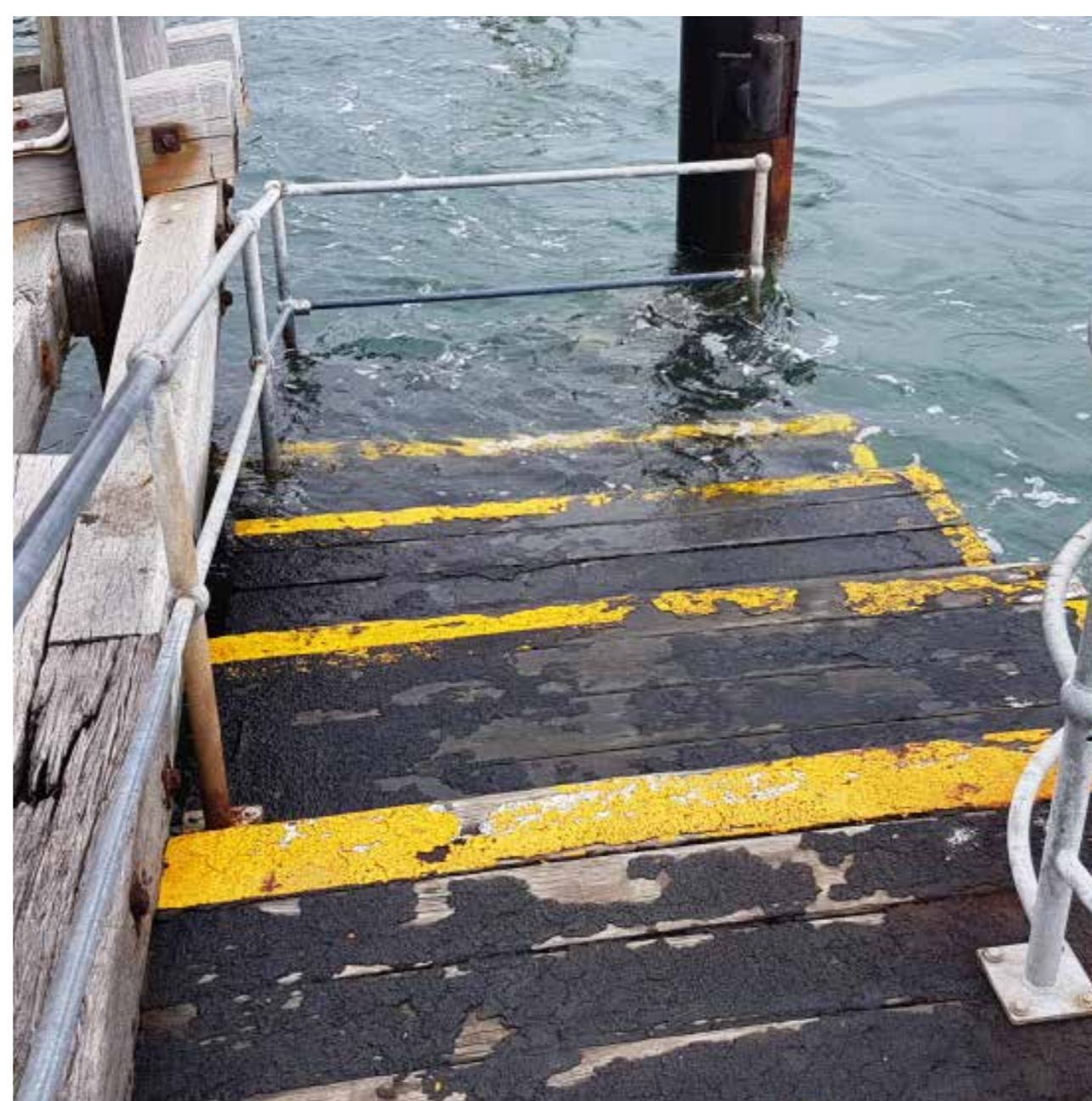
- ▶ Better protection from the wind, rain and sun
- ▶ Improved seating and waiting areas
- ▶ Improved safety for customers
- ▶ Quicker and more efficient ferry boarding and disembarking
- ▶ Effective wayfinding signage and lighting.

Planning for the new wharf at Birchgrove is currently underway and as part of the planning process we would like to hear your feedback on the proposed concept.

Next steps

Feedback from consultation on the proposed concept design will be included in the Review of Environmental Factors. This document will be publicly displayed for comment before start of work is finalised.

Construction timing and alternative transport arrangements will be confirmed as the project progresses.



Existing tidal stairs at Birchgrove Wharf

