



Australian Government

**BUILDING OUR FUTURE**



September 2015

## Night work on Bringelly Road, Leppington from Wednesday 7 October

**The Australian and NSW governments are funding this work as part of the \$509 million Bringelly Road Upgrade between Camden Valley Way, Leppington and King Street, Rossmore. This project is part of the \$3.6 billion Western Sydney Infrastructure Plan.**

Roads and Maritime Services will carry out work, which includes installing safety barriers and temporary traffic signage, removing vegetation, locating and protecting utility services, saw cutting, removing existing road surface, earthworks and building the new road surface. The enclosed map helps to show the location of the work.

To minimise traffic disruptions, we are extending our work hours to include six night shifts each month. The work will be carried out from **Wednesday 7 October until late 2017**, weather permitting. Our working hours will be from **7pm to 5am, Monday to Friday**. Currently this work will be limited to a maximum of two nights in a row at any one location. Individual properties will be advised when night work will take place close-by.

We will visit properties in the coming weeks to consult with affected residents regarding potentially varying work hours to speed up progress and reduce disruption to the community.

### How will the work affect you?

We will make every effort to minimise noise at night by doing the noisiest work early in the shift. Saw cutting and grinding will finish by 11pm, while lower impact noisy work including reversing beepers and general machine operations will be carried out from 11pm to 5am.

### Traffic changes

Access to properties will be maintained throughout the work. There may be occasional short delays to traffic along Bringelly Road as traffic controllers help our contractor's trucks to safely enter and exit our construction sites.

Temporary lane closures will be in place to ensure the safety of road users and workers. Please follow the direction of traffic controllers, adhere to reduced speed limits and follow traffic signs.

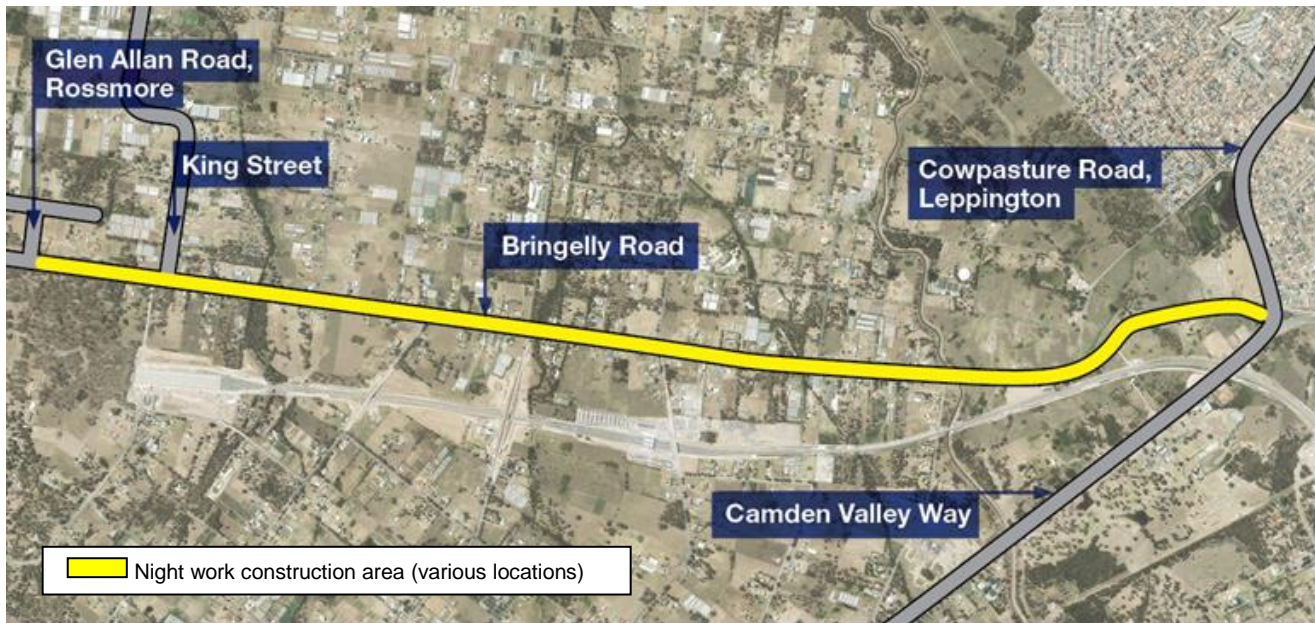
For the latest traffic updates, call 132 701, visit [livetraffic.com](http://livetraffic.com) or download the Live Traffic NSW App.

### Contact

If you have any questions, please call our project team on **1800 199 009** or email [bringellyroadupgrade@bmd.com.au](mailto:bringellyroadupgrade@bmd.com.au) or visit [rms.nsw.gov.au/bringellyroad](http://rms.nsw.gov.au/bringellyroad).

Thank you for your patience during this important work.

## Location map



## Western Sydney Infrastructure Plan

The Australian and NSW governments are funding a 10 year, \$3.6 billion road investment program for western Sydney. The Western Sydney Infrastructure Plan (WSIP) will deliver major road infrastructure upgrades to support integrated transport for the region and capitalise on the economic benefits from developing a western Sydney airport at Badgerys Creek. It will also improve safety, increase road capacity and reduce congestion and travel times in the future. For more information on WSIP projects, visit [rms.nsw.gov.au/wsip](https://rms.nsw.gov.au/wsip) or call 1800 703 457.

<p><b>61 km</b> of new and upgraded roads</p>	<p>Reduced travel times to Penrith, Liverpool and Campbelltown CBD precincts</p>	<p><b>\$3.6 billion</b> investment in major transport infrastructure</p>	<p><b>4000</b> direct and indirect jobs over 10 years</p>	<p>Improve the efficient movement of state and national freight</p>	<p>Provide opportunities for improved public transport</p>	<p>Make western Sydney an even better place to live and do business</p>	<p>Transform the local economy</p>
---	--	--	---	---	--	---	------------------------------------



### Translating and Interpreting Service

If you need an interpreter, please call the Translating and Interpreting Service (TIS National) on **131 450** and ask them to telephone Roads and Maritime Services on 1800 703 457.

#### Arabic

إذا كنتم بحاجة إلى مترجم، الرجاء الاتصال بخدمة الترجمة الخطية والشفهية (TIS National) على الرقم **131 450**، والطلب منهم الاتصال بوكالتكم Roads and Maritime Services على الرقم 1800 703 457.

#### Cantonese

若你需要口譯員，請致電 **131 450** 聯絡翻譯和口譯服務署 (TIS National)，要求他們致電 1800 703 457 聯絡 Roads and Maritime Services。

#### Filipino

Kung nangangailangan kayo ng isang interpreter, mangyaring tumawag lamang po sa Translating and Interpreting Service (TIS National) sa **131 450** at sabihin na tawagan nila ang Roads and Maritime Services sa 1800 703 457.

#### Hindi

यदि आपको दुभाषिण की आवश्यकता है तो कृपया टेलीफोन दुभाषिया सेवा (TIS National) को **131 450** पर फ़ोन करें और उनसे सड़क व समुद्र संबंधी सेवा (Roads and Maritime Services) को 1800 703 457 पर फ़ोन करने के लिए कहें।

#### Italian

Se desiderate l'assistenza di un interprete, prego telefonare al Servizio Interpreti e Traduttori (TIS National) al **131 450** chiedendo di contattare Roads and Maritime Services al 1800 703 457.

#### Mandarin

如果你需要口译员，请致电 **131 450** 联系翻译和口译服务署 (TIS National)，要求他们致电 1800 703 457 联系 Roads and Maritime Services。

#### Vietnamese

Nếu cần thông ngôn viên, xin quý vị gọi cho Dịch Vụ Thông Phiên Dịch (TIS Toàn Quốc) qua số **131 450** và nhờ họ gọi cho Roads and Maritime Services qua số 1800 703 457.



Transport  
Roads & Maritime  
Services