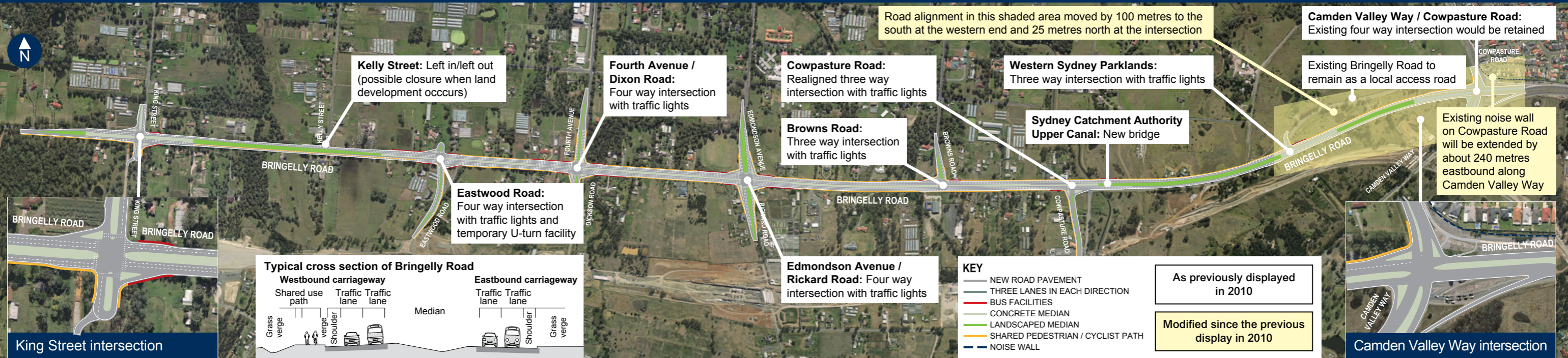


# Bringelly Road upgrade Stage 1 - Between Camden Valley Way, Leppington and King Street, Rossmore



Road alignment in this shaded area moved by 100 metres to the south at the western end and 25 metres north at the intersection

**Camden Valley Way / Cowpasture Road:**  
Existing four way intersection would be retained

**Kelly Street:** Left in/left out  
(possible closure when land development occurs)

**Fourth Avenue / Dixon Road:**  
Four way intersection with traffic lights

**Cowpasture Road:**  
Realigned three way intersection with traffic lights

**Western Sydney Parklands:**  
Three way intersection with traffic lights

Existing Bringelly Road to remain as a local access road

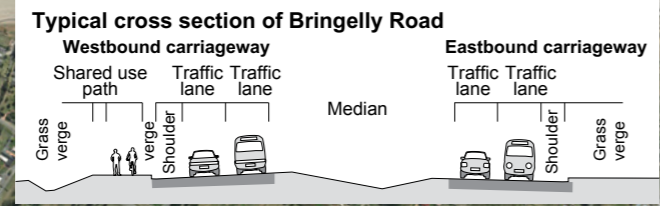
Existing noise wall on Cowpasture Road will be extended by about 240 metres eastbound along Camden Valley Way

**Eastwood Road:**  
Four way intersection with traffic lights and temporary U-turn facility

**Browns Road:**  
Three way intersection with traffic lights

**Sydney Catchment Authority Upper Canal:** New bridge

**Edmondson Avenue / Rickard Road:** Four way intersection with traffic lights



- KEY**
- NEW ROAD PAVEMENT
  - THREE LANES IN EACH DIRECTION
  - BUS FACILITIES
  - CONCRETE MEDIAN
  - LANDSCAPED MEDIAN
  - SHARED PEDESTRIAN / CYCLIST PATH
  - NOISE WALL

As previously displayed in 2010

Modified since the previous display in 2010

