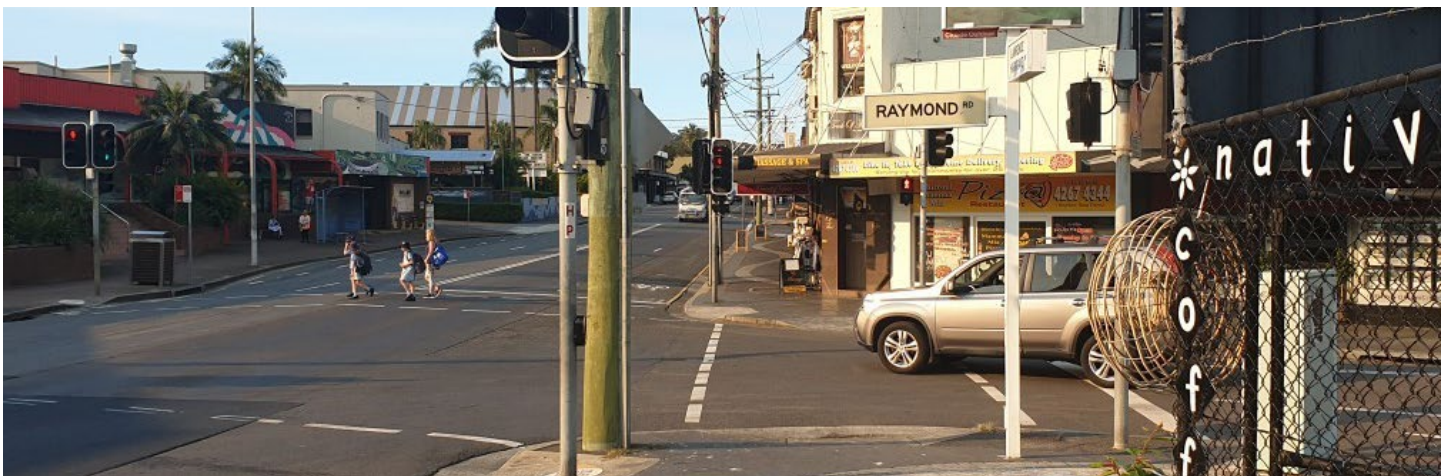




Transport for NSW

Thirroul traffic improvements

Have your say | Updated July 2021



Lawrence Hargrave Drive at Thirroul

Transport for NSW has been developing options to improve the traffic efficiency and reliability of the Princes Highway at Bulli and Lawrence Hargrave Drive at Thirroul.

Background

The Princes Highway at Bulli and Lawrence Hargrave Drive at Thirroul provide key travel routes between Wollongong, its northern suburbs and Sydney. The town centres at Bulli and Thirroul are experiencing increased road traffic and demand for access to the town centres.

We have developed a preferred option and an alternative option to improve safety, traffic flow and ease congestion following feedback from businesses, community members, key stakeholders and visitors during community consultation in late 2019.

Thirroul

Traffic congestion is increasing in Thirroul, particularly where local roads join Lawrence Hargrave Drive. This is due to turning vehicles, parking and intersection capacity.

To ensure the transport network continues to meet the needs of the growing population, we are proposing a preferred option and an alternate option to help ease congestion and create more reliable journeys through Thirroul while ensuring the look and feel of the township is maintained.

We are seeking feedback from the community on both the options that have been developed.

Following feedback, the project scope will be refined and the community will be informed of next steps.

What do these changes mean for you?

The proposed options aim to ensure we have a transport network that continues to meet the growing needs of the population while balancing the need for maintaining a sense of community in and around the Thirroul township.

Removal of parking and ensuring future capacity

We will ensure parking offsets are in place before the completion of the project.

Preferred option – Changes to intersections and traffic management to create one continuous lane of travel.

We recognise that creating a continuous travel lane along Lawrence Hargrave Drive will impact those who park between Hewitts Avenue and The Esplanade.

A number of parking spaces will need to be removed to allow us to implement this option. To minimise impacts, we will investigate options to increase capacity at the train station carpark, including changing the carpark layout and identifying where additional parking can be added. We will also investigate side street parking options, including reviewing existing parking restrictions and the provision of additional timed parking spaces.

Alternative option – Introduction of clearways along Lawrence Hargrave Drive during peak hours on weekdays

This option would remove all parking along Lawrence Hargrave Drive in the southbound direction between Church Street and the Princes Highway in the morning between 6:30am and 9:30am and in the northbound direction between Prince Street and Mary Street in the afternoon between 3pm and 6pm.

Current parking arrangements would be in place in both directions outside the proposed clearway times.

We will continue to work with Wollongong City Council to identify options to offset parking.

Reducing traffic congestion and improving safety

The preferred option would reduce congestion, improve traffic flow and safety at the identified congestion points.

The alternative option would increase the road capacity, reduce congestion and improve traffic flow in the peak travel periods on weekdays.

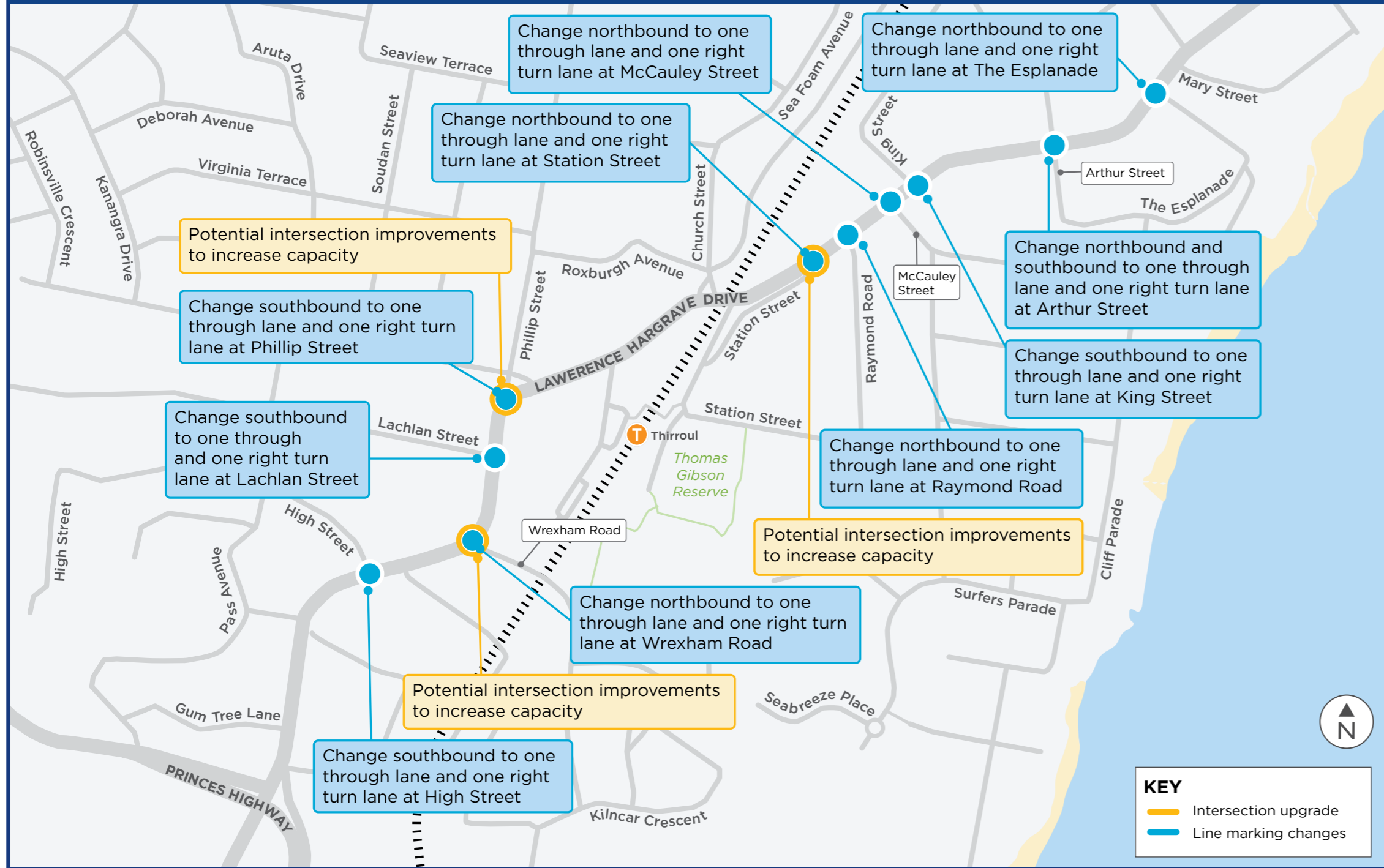
More Trains, More Services

The More Trains, More Services program will simplify and modernise the rail network, creating turn up and go services for many customers. The current stage of the program will deliver improvements for the T4 Eastern Suburbs & Illawarra Line, South Coast Line and T8 Airport & South Line. Customers will be kept up to date as the program progresses.



Lawrence Hargrave Drive, Thirroul

Preferred option: Continuous travel lane strategy



Proposal details

A preferred option and an alternative option are proposed for Thirroul. We are asking the community to consider both options and provide feedback on their preferred approach.

Both options aim to improve travel times for individuals, public transport and freight and improve reliability across the transport network.

Preferred option

Changes to intersections and traffic management to create one continuous travel lane

A number of intersection and traffic changes would be implemented at key congestion points along Lawrence Hargrave Drive to create one continuous lane of travel.

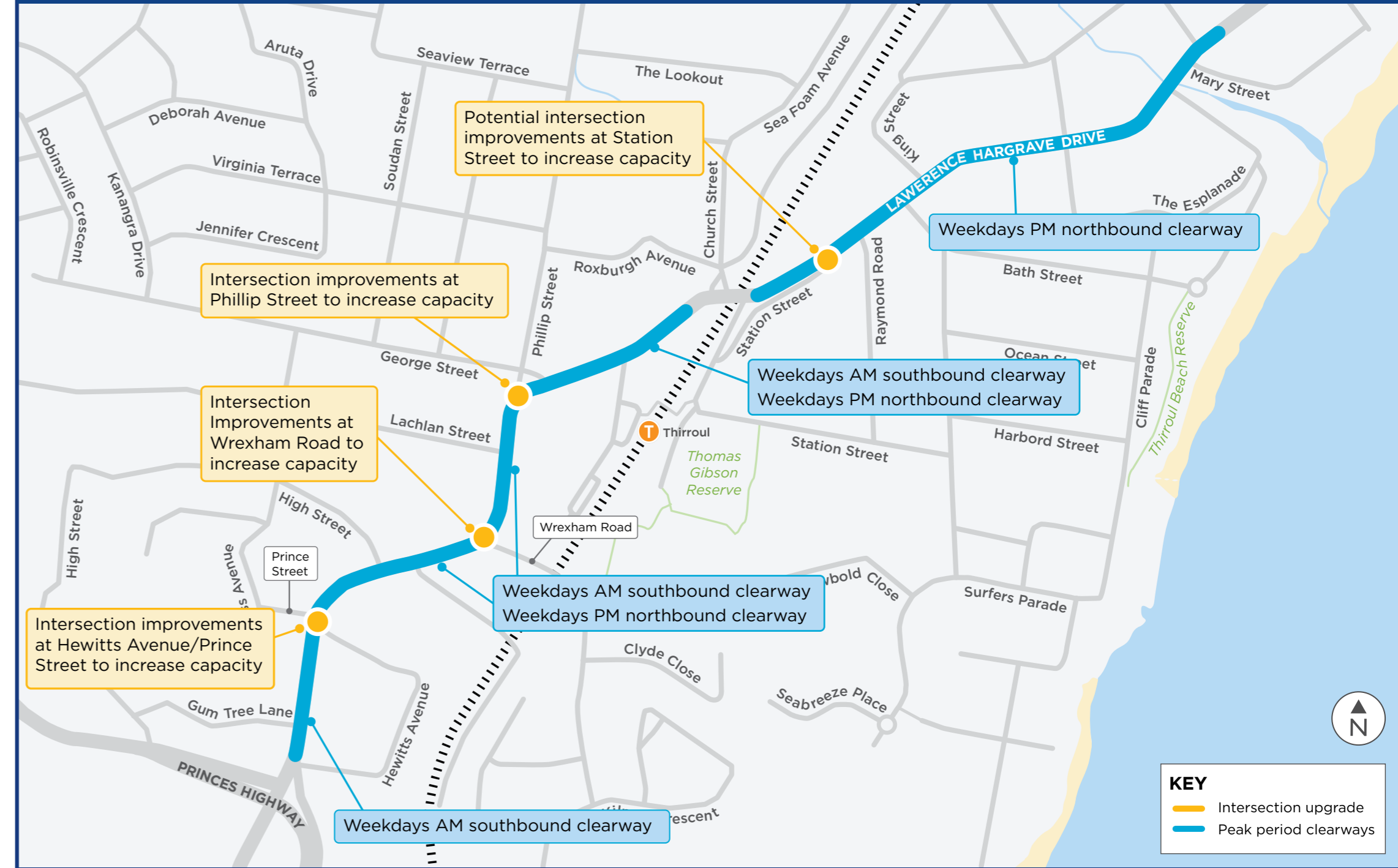
The changes would allow transport users to travel continuously without being temporarily stopped behind cars turning right off Lawrence Hargrave Drive.

Changes are proposed at:

- The Esplanade
- Arthur Street
- King Street
- McCauley Street
- Raymond Road
- Station Street
- Phillip Street
- Lachlan Street
- Wrexham Road
- High Street

This option includes changes to existing on-street car parking and intersections to allow traffic to flow continuously through the town centre as well as the potential construction of a right turn lane at Station Street.

Alternative option: Clearway strategy



Alternative option

Introduction of clearways along Lawrence Hargrave Drive during peak hours on weekdays

Clearways would be implemented on Lawrence Hargrave Drive southbound between Church Street and the Princes Highway during the morning peak, and northbound between Prince Street and Mary Street during the afternoon peak. This would provide two continuous travel lanes for traffic through Thirroul. The location of clearways are shown on the map above.

To allow the operation of two continuous travel lanes, changes to existing on-street parking and intersections along Lawrence Hargrave Drive would need to be made, including:

- Weekdays southbound clearway between Church Street and the Princes Highway between 6:30am and 9:30am.
- Weekdays northbound clearway between Prince Street and Mary Street between 3pm and 6pm.

- Intersection improvements at Phillip Street, Wrexham Road and Hewitts Avenue/Prince Street.
 - Potential intersection improvements at Station Street including the construction of a right turn lane.
- Clearways are not proposed on weekends.

Have your say

We would like your feedback on the proposed options.

The consultation process plays an important role in project development and provides an opportunity for you to have your say.

At the end of the consultation period, a Feedback Report will be prepared to respond to issues raised during this process.

Digital engagement room

You can visit our digital engagement room to view the proposals and provide feedback at any time before 5pm Friday 30 July 2021.

Visit the room at nswroads.work/bullithirroulroom or by scanning the QR code below.



Write to us

You can provide written feedback by email or post

@ southprojects@transport.nsw.gov.au

✉ Bulli and Thirroul Improvements
PO Box 477 Wollongong NSW 2520

The consultation period has been extended and feedback now closes at 5pm, Friday 30 July 2021.

Contact us

If you have any questions or would like to know more please contact our project team:

☎ 1800 861 977

@ southprojects@transport.nsw.gov.au

🖥 nswroads.work/bullithirroul



If you need help understanding this information, please contact the Translating and Interpreting Service on **131 450** and ask them to call us on **1800 861 977**.

Next steps

Where are we now and what are the next steps?



July 2021
Transport for NSW 21.090

Privacy Transport for NSW ("TfNSW") is subject to the Privacy and Personal Information Protection Act 1998 ("PPIIP Act") which requires that we comply with the Information Privacy Principles set out in the PPIIP Act. All information in correspondence is collected for the sole purpose of assisting in the delivery of this project. The information received, including names and addresses of respondents, may be published in subsequent documents unless a clear indication is given in the correspondence that all or part of that information is not to be published. Otherwise TfNSW will only disclose your personal information, without your consent, if authorised by the law. Your personal information will be held by TfNSW at 27 Argyle Street, Parramatta. You have the right to access and correct the information if you believe that it is incorrect.