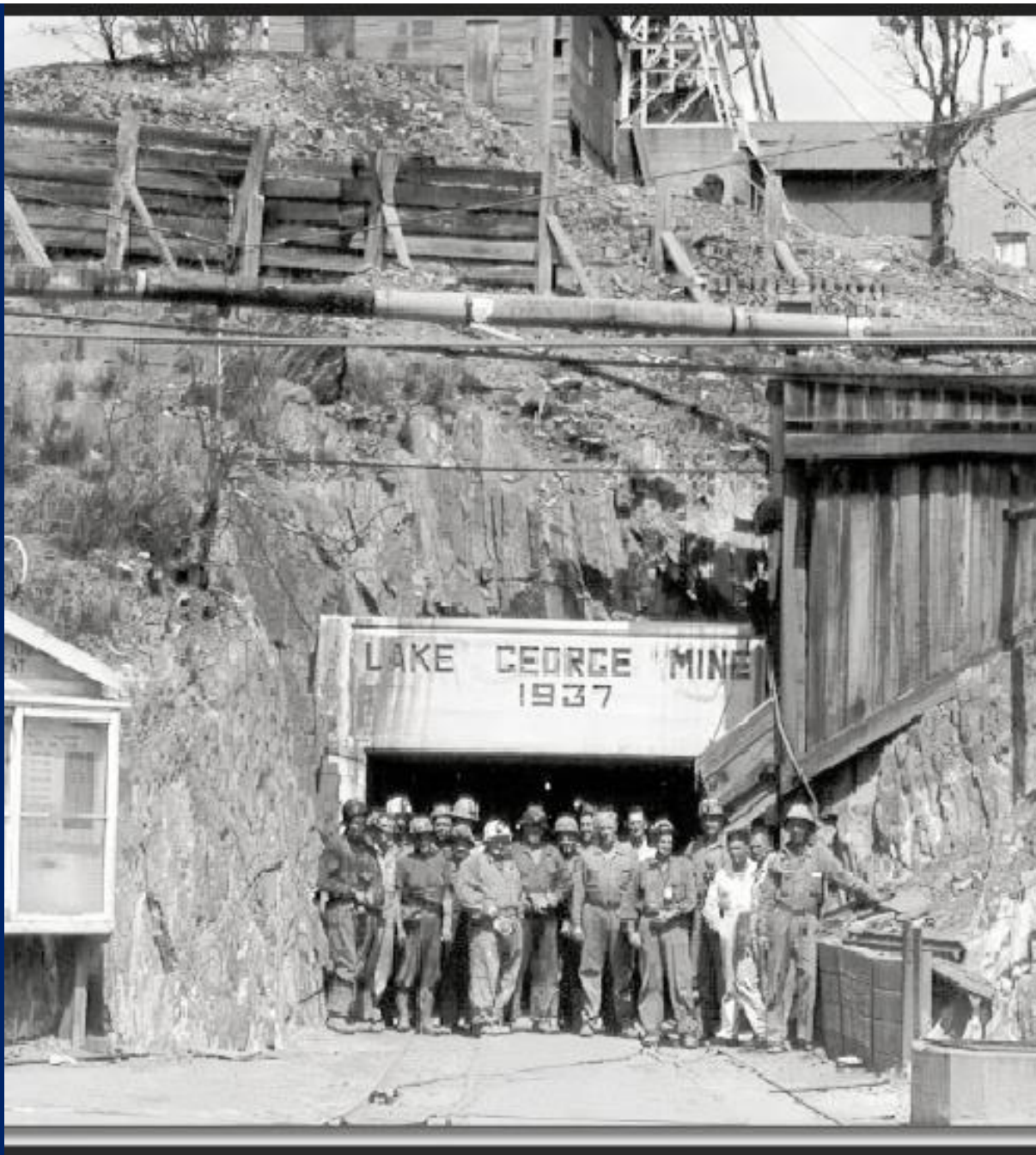


Transport for NSW

Bungendore Rail Corridor Remediation Project

12 December 2022

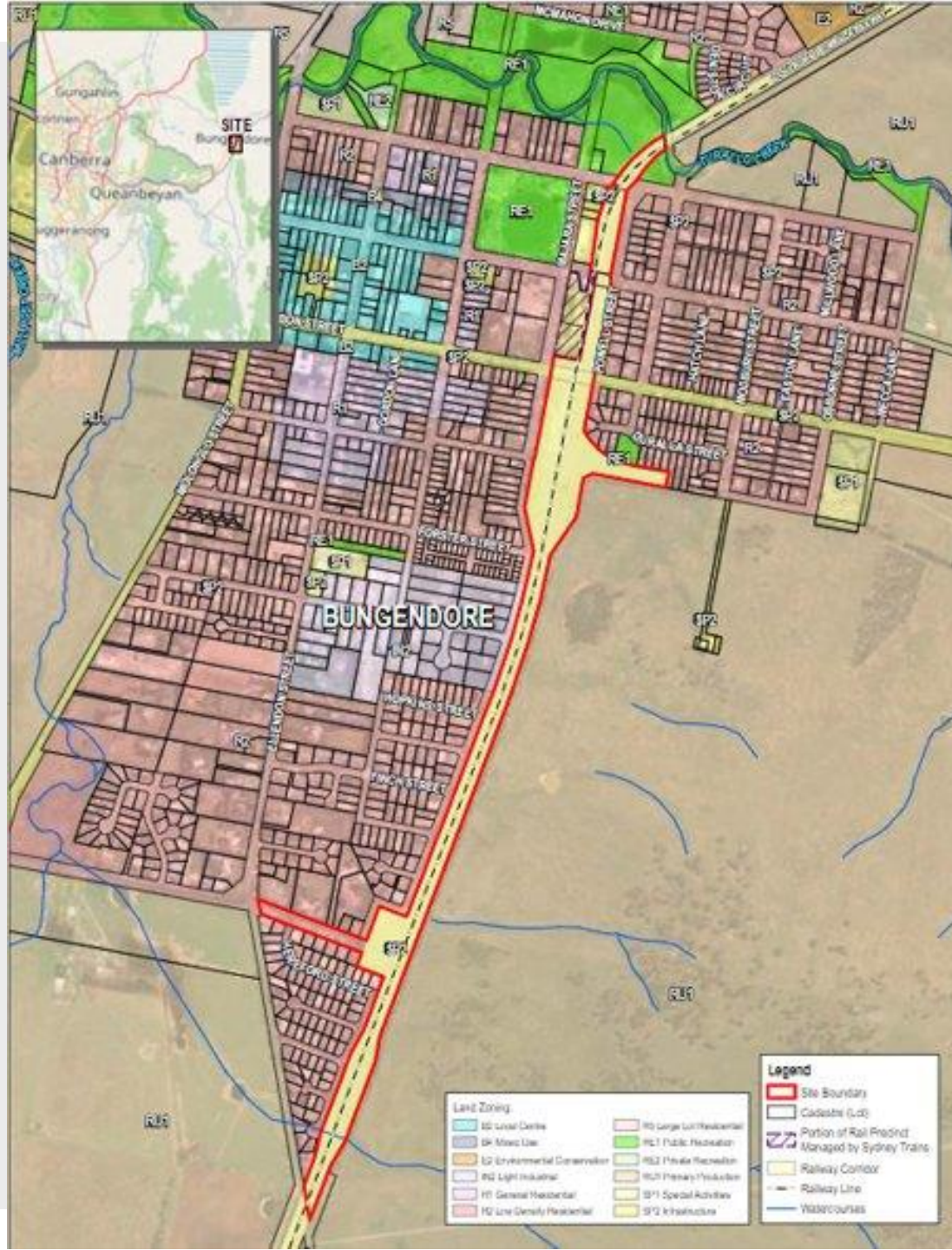
transport.nsw.gov.au



Background

- Elevated levels of lead has been found in soils along the rail corridor.
- The contamination is due to the historic mining transport activities
- The site was reported to NSW EPA in September 2021
- Transport is engaging with the community and those who are impacted directly by each site
- Safety is our priority and there are areas that are now fenced off to protect the community

Bungendore Rail Corridor



Bungendore Rail Corridor

Elevated levels of lead were detected at the following sites:

- Along the Rail Corridor in Bungendore
- The unofficial car park for the Bungendore Public School on the corner of Majara Street and Kings Highway. (This area will remain fenced until it can be remediated).
- The Woolshed which is used by the Lake George Men's Shed. (We are consulting with the Men's Shed to make the site safe and expect that they will be able to return to the site in early 2023)
- Close to three private properties adjacent to the corridor. Following further investigation only one property is affected, and we are working closely with the owner.

Investigation and Remediation Timeframe



Project timeline
Investigation phase (including Interim Environmental Management Plan (IEMP))
Action plan to mitigate risks
Remediation Action Plan
Activities to implement remediation
Obtain planning permits and approvals
Engage specialist contractor
Start remediation
Complete remediation
Auditor validates remediation



Progress of the project

- Transport completed preliminary site investigations in August 2022
- Reports have been shared with the NSW Environment Protection Authority (NSW EPA) and are available on our website
- Transport will continue to work closely with the NSW EPA as it works through the steps to remediate the site
- The NSW EPA will declare the land contaminated under the Contaminated Land Management Act

Keeping the community safe

- We have developed Interim Environmental Management Plans (IEMP) to mitigate the potential risks to people and the environment
- Routine inspections of the controls in the IEMP are being conducted
- We will conduct further testing in the area. This may include surface water monitoring and air monitoring
- Transport will continue to work closely with the EPA as it works through the steps to remediate the site

Bungendore Station



Fenced area near Station



Woolshed used by Lake George Men's Shed



Keeping the community safe and informed



Our primary focus is to ensure the safety of the community.



The reports submitted to the NSW EPA are in the Reports section of our website transport.nsw.gov.au/tarago.



We will continue to keep the community informed using a range of tools including our website, emails, community information sessions.



We can be contacted via email landassessment@transport.nsw.gov.au or 1800 491 566

Information about lead

- For more information about lead exposure, please see the [NSW Health website.](#)

- For more information about managing lead in the environment see the [EPA website.](#)