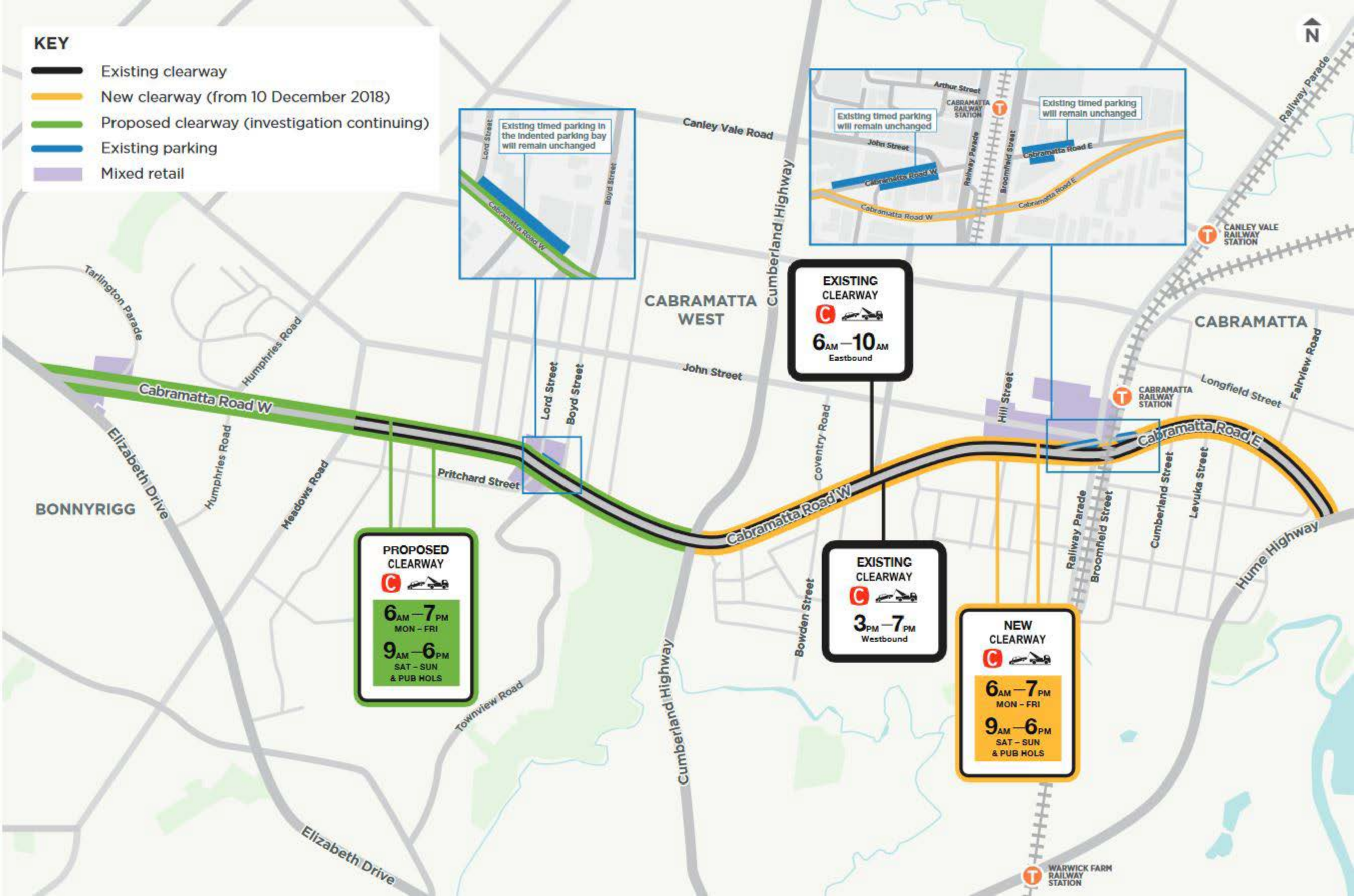


**KEY**

- Existing clearway
- New clearway (from 10 December 2018)
- Proposed clearway (investigation continuing)
- Existing parking
- Mixed retail



Existing timed parking in the indented parking bay will remain unchanged

Existing timed parking will remain unchanged

Existing timed parking will remain unchanged

**EXISTING CLEARWAY**  
6 AM - 10 AM  
Eastbound

**PROPOSED CLEARWAY**  
6 AM - 7 PM  
MON - FRI  
9 AM - 6 PM  
SAT - SUN  
& PUB HOLS

**EXISTING CLEARWAY**  
3 PM - 7 PM  
Westbound

**NEW CLEARWAY**  
6 AM - 7 PM  
MON - FRI  
9 AM - 6 PM  
SAT - SUN  
& PUB HOLS