



Transport for NSW

Cambridge Avenue upgrade

Linking Moorebank Logistics Park and the Hume Motorway | December 2020

Have your say – recommended design



Cambridge Avenue looking west

The NSW Government has started early planning for an upgrade and extension of Cambridge Avenue, Glenfield to support future population and employment growth.

Background

Western Sydney is Australia's third largest economy and the population is expected to grow from two million to three million people over the next 20 years. The NSW Government is planning for this growth by developing transport corridors to serve future residential and employment lands.

Cambridge Avenue is an important future transport corridor providing access to Moorebank Logistics Park, the Western Sydney Employment Area, Badgerys Creek International Airport, and the South West Growth Centre.

Transport for NSW has developed a recommended option for the proposal and is seeking community feedback on this recommended option. The community consultation period will be open until **15 February 2021** and this update contains information on the proposal and how the community can get involved.

Recommended design

Transport for NSW (TfNSW) has identified a design to link Moorebank Logistics Park and the Hume Motorway to improve access.

The recommended design would involve duplication and extension of Cambridge Avenue westward from Moorebank Avenue to Campbelltown Road including:

- Four lanes between Moorebank Logistics Park and Canterbury Road
 - Extending of Cambridge Avenue as a dual-carriageway with provision for up to six-lanes between Glenfield Road and Campbelltown Road
 - An improved M31 Hume Motorway and Campbelltown Road interchange access which would enable motorists travelling:
 - north on the Hume Motorway to exit to Campbelltown Road
 - on Campbelltown Road to join the M31 Hume Motorway to take either M5 eastbound or M7 northbound
 - south on the M7 Motorway to exit to Campbelltown Road.
- Campbelltown Road would also be upgraded between Ingleburn Gardens Drive and Parkers Farm Place.
 - New bridge over the Main South and East Hills rail lines and the Southern Sydney Freight Line at Glenfield
 - New bridge over Georges River with flood immunity for 1 in 100 year flood
 - New bridge over the East Hills Rail Line at Moorebank
 - New bridge over the Hume Motorway on Campbelltown Road.



Reduced congestion at intersections for locals and through traffic

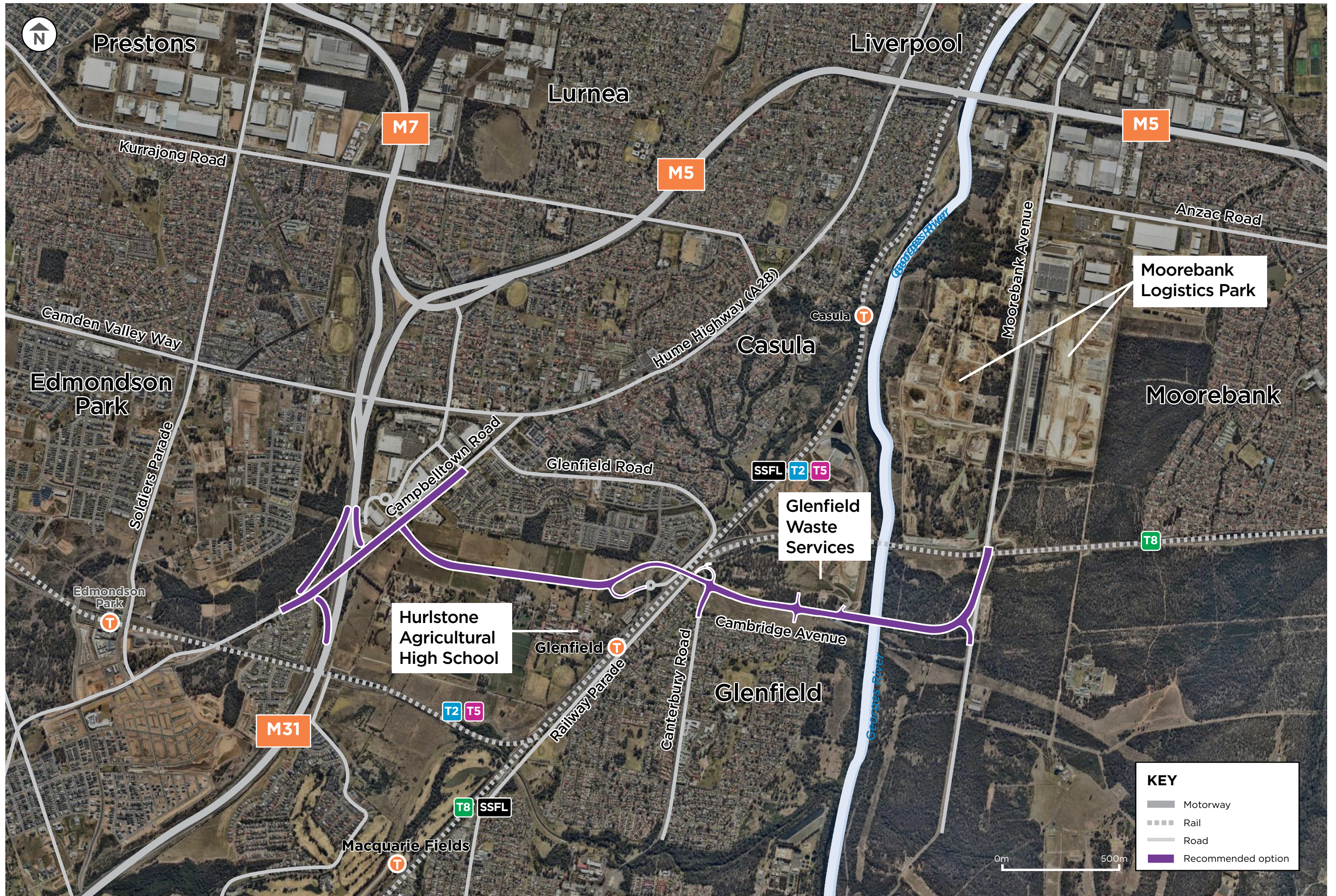


Catering for Sydney's growth in passengers and freight



Cambridge Avenue and Canterbury Road intersection looking west

Overview map



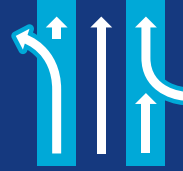
Benefits of the proposed upgrade

The recommended design would:

- Provide a reliable road network to support economic and residential growth in western Sydney
- Reduce congestion in the wider Sydney road network
- Provide efficient, reliable travel between the Moorebank Logistics Park and the state road network
- Support the M5 Motorway as the key gateway for south-west Sydney
- Improve flood resilience across the Georges River.



**Economic
benefits**



**Improving
traffic flow**

Selection of a recommended design

TfNSW consulted with key stakeholders including the Department of Planning, Industry and Environment, Moorebank Intermodal Company, QUBE, the Department of Education, the Department of Defence, and Liverpool and Campbelltown City councils to identify a recommended design. Key stakeholders attended a range of workshops and meetings to evaluate options and identify a recommended option.

Further information on the recommended design and how we developed and selected it can be found in the Options Report, which is now available for community feedback.

Moorebank Intermodal Terminal Road Access Strategy

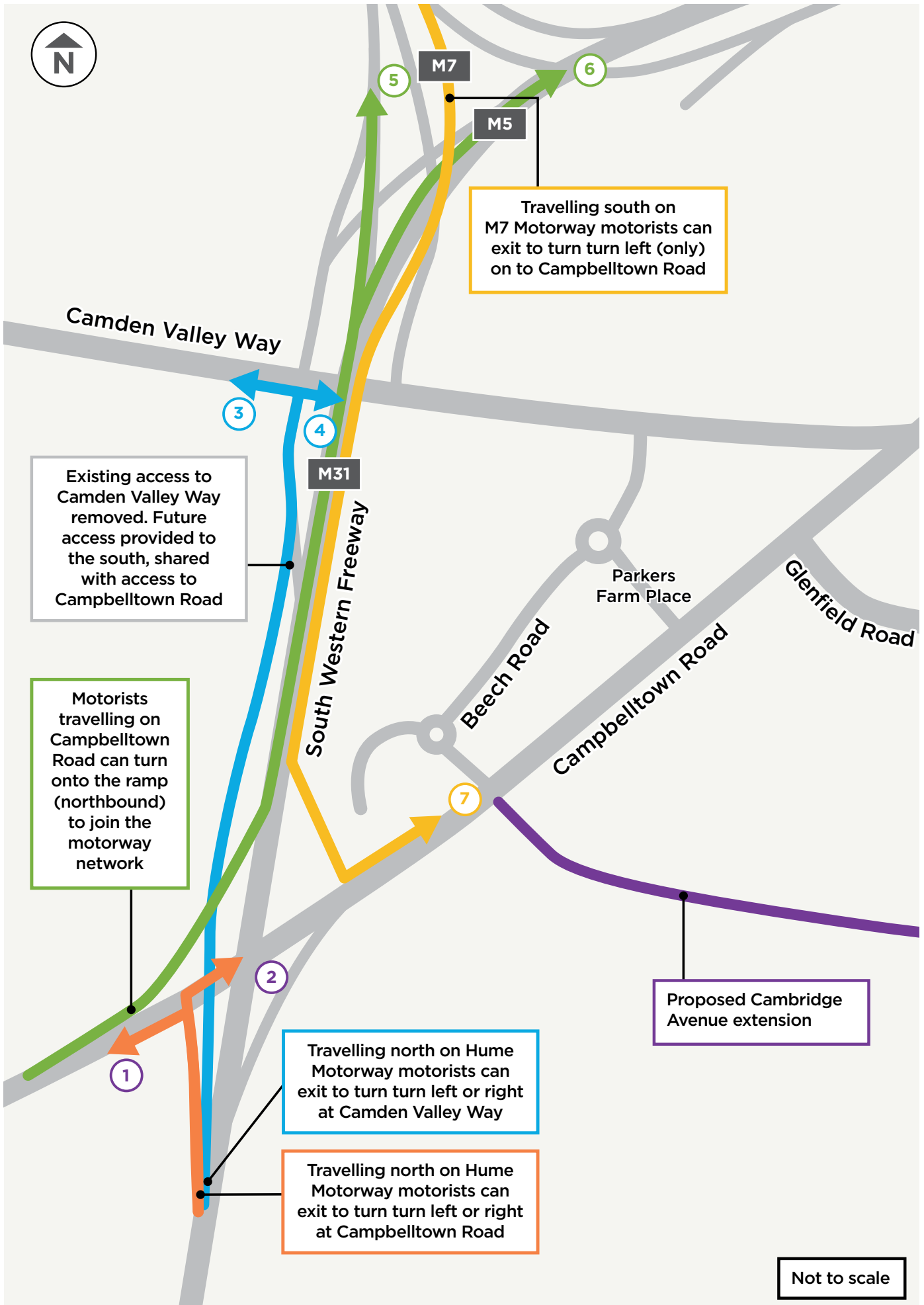
TfNSW has developed the Moorebank Intermodal Terminal Road Access (MITRA) Strategy to address increasing traffic and freight movements in the Liverpool-Moorebank area over the next 10–20 years. The strategy has identified road infrastructure improvements to meet the forecast growth of Liverpool CBD and regional traffic, together with construction of Moorebank Logistics Park. The facility will generate over 6,600 heavy vehicle trips and 10,000 light vehicle trips per day.

The proposal to upgrade Cambridge Avenue is one of the road infrastructure improvements identified in the MITRA strategy.

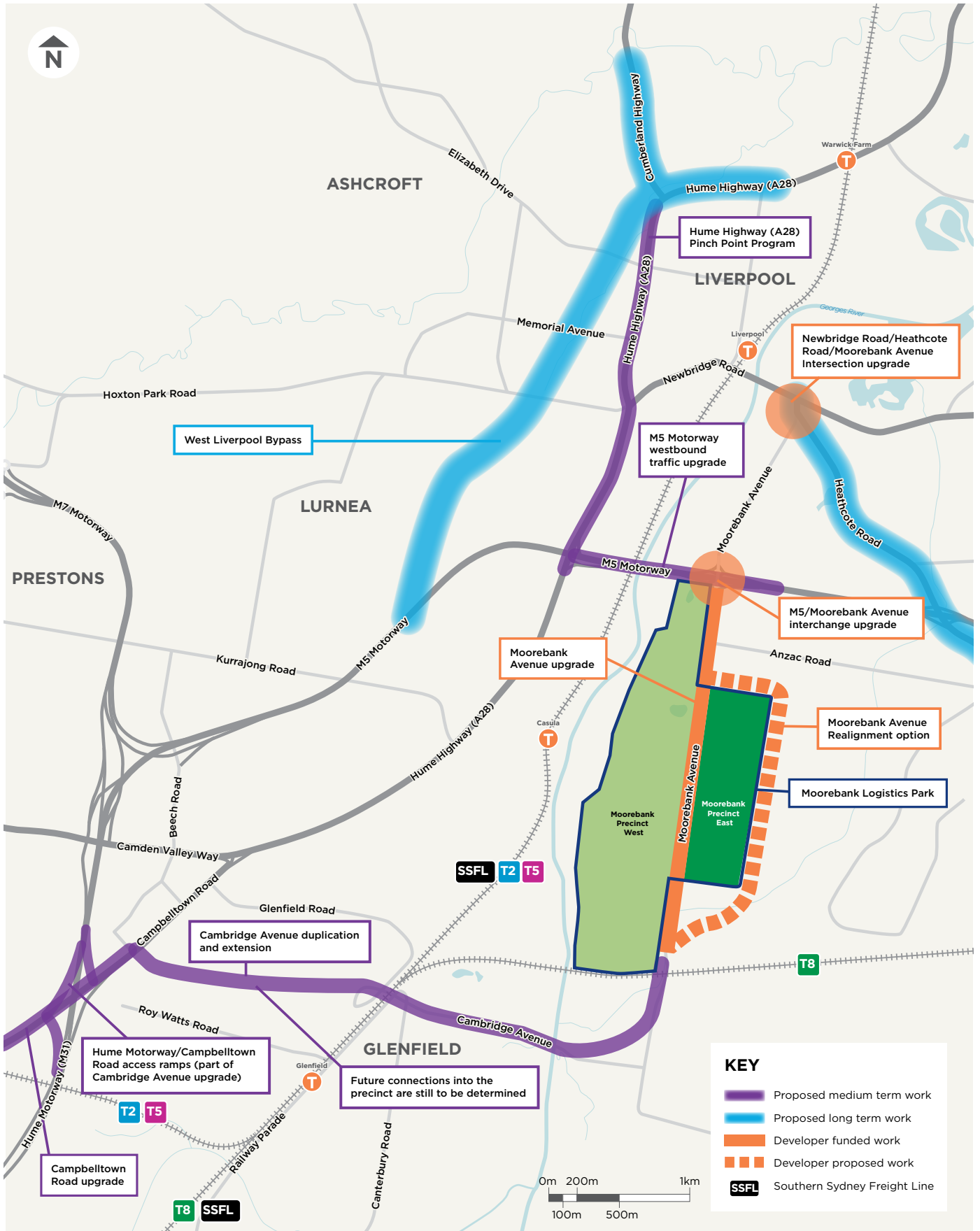


The Cambridge Avenue crossing over the Georges River is a low-level single lane bridge that is subject to regular flooding. The proposed upgrade would include a new bridge built to 1:100 year flood level resilience.

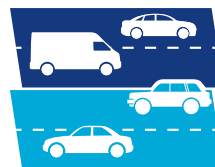
Upgraded connections with the M5 Motorway



Moorebank Intermodal Terminal Road Access (MITRA) Strategy map



Better, safer and more **reliable trips** for people, business and freight



Easing congestion

Property Acquisition

As the project progresses, there will be a need for Transport to acquire some properties. These may be full or partial property acquisitions.

A Transport Personal Manager Acquisitions will speak directly with any potentially affected property owners and continue to be in contact as the project progresses.

More information about the property acquisition process is available at www.propertyacquisition.nsw.gov.au

Have your say

Consultation is now open. We are inviting your feedback on the recommended design for the Cambridge Avenue upgrade.

We have assessed options and are displaying an options report available on our website. We ask you to become involved and review the options report.

In response to the evolving Coronavirus situation, Transport for NSW is following NSW Health advice and duplicating and extending the way it approaches community consultation for important transport infrastructure projects. It is important for the community to have their say on all transport infrastructure projects. This means consultation will be carried out in different ways to ensure the community can practise social distancing and limit the spread of Coronavirus.

Community information sessions

To ensure the health and safety of the community and our staff we will replace face to face community information sessions with an online information sessions on the NSW Roads Facebook page at facebook.com/NSWRoads on **Wednesday, 16 December 2020** and **Tuesday, 9 February 2021** from **4pm – 5pm**. During the session you can find out more about the recommended design from the project team and ask questions about the strategic design. If you are not able to join the live session or would like to submit your questions in advance, please email the team at cambridgeavenue@rms.nsw.gov.au or call us on **1800 370 601**.

What are the next steps?


Consultation closes on **15 February 2021**. All comments received during consultation for the recommended design will be considered in decision making and development of the final concept design. A report which summarises comments or questions received for the proposed upgrade, and our responses, will be published on the Transport website. If you submit feedback you will receive notification of the report's availability.

We will keep community members and stakeholders informed of the progress throughout delivery of the project.




** Subject to project approval and funding availability

Contact us

 1800 370 601 during business hours

 cambridgeavenue@rms.nsw.gov.au

 Cambridge Avenue upgrade
Transport for NSW
PO Box 973 Parramatta NSW 2124

 For more information about the project, visit nswroads.work/cambridgeave



If you need help understanding this information, please contact the Translating and Interpreting Service on 131 450 and ask them to call us on 1800 370 601.



December 2020
20.320

Privacy Transport for NSW ("TfNSW") is subject to the Privacy and Personal Information Protection Act 1998 ("PIIP Act") which requires that we comply with the Information Privacy Principles set out in the PIIP Act. All information in correspondence is collected for the sole purpose of assisting in the delivery of this project. The information received, including names and addresses of respondents, may be published in subsequent documents unless a clear indication is given in the correspondence that all or part of that information is not to be published. Otherwise TfNSW will only disclose your personal information, without your consent, if authorised by the law. Your personal information will be held by TfNSW at 27 Argyle Street, Parramatta. You have the right to access and correct the information if you believe that it is incorrect.