



Australian Government

**BUILDING OUR FUTURE**



November 2017

## **Night work on the M31 Hume Motorway and the Narellan Road interchange, Mount Annan from Friday 1 December 2017**

**The Australian and NSW governments are jointly funding the Narellan Road Upgrade between Camden Valley Way, Narellan and Blaxland Road, Campbelltown.**

Roads and Maritime Services is delivering this important project to reduce congestion and improve safety and travel times. As part of this upgrade, asphaltting will be carried out on the M31 Hume Motorway ramps at the Narellan Road interchange, Mount Annan. During this work temporary detours will be in place.

Work will take place at night between **10pm, Friday 1 December** and **7am, Saturday 2 December** and **10pm, Friday 8 December** and **7am, Saturday 9 December**, weather permitting.

We have included a map to show the detours and location of the work.

### **How will the work affect you?**

Our work may be noisy and include extra lighting, however we will make every effort to minimise the impact on residents including completing noisier work earlier in the evening and directing light away.

### **Traffic changes**

For the safety of motorists and workers, temporary traffic changes will be in place.

- On **Friday 1 December**, motorists travelling east on Narellan Road will not be able to travel northbound onto the M31 Hume Motorway via the on ramp from Narellan Road. Detours will be in place via Narellan Road, Blaxland Road and Campbelltown Road.
- On **Friday 8 December**, motorists travelling westbound on Narellan Road will not be able to travel northbound onto the M31 Hume Motorway via the on ramp from Narellan Road. Detours will be in place via Narellan Road and Camden Valley Way
- On **Friday 8 December**, motorists travelling north on the Hume Motorway will not be able to use the Narellan Road exit ramp from the M31 Hume Motorway onto Narellan Road. Detours will be in place via Hume Motorway and Camden Valley Way.

Temporary lane closures will affect travel times during night work. Motorists are asked to take extra care and observe all traffic signs when travelling through work areas.

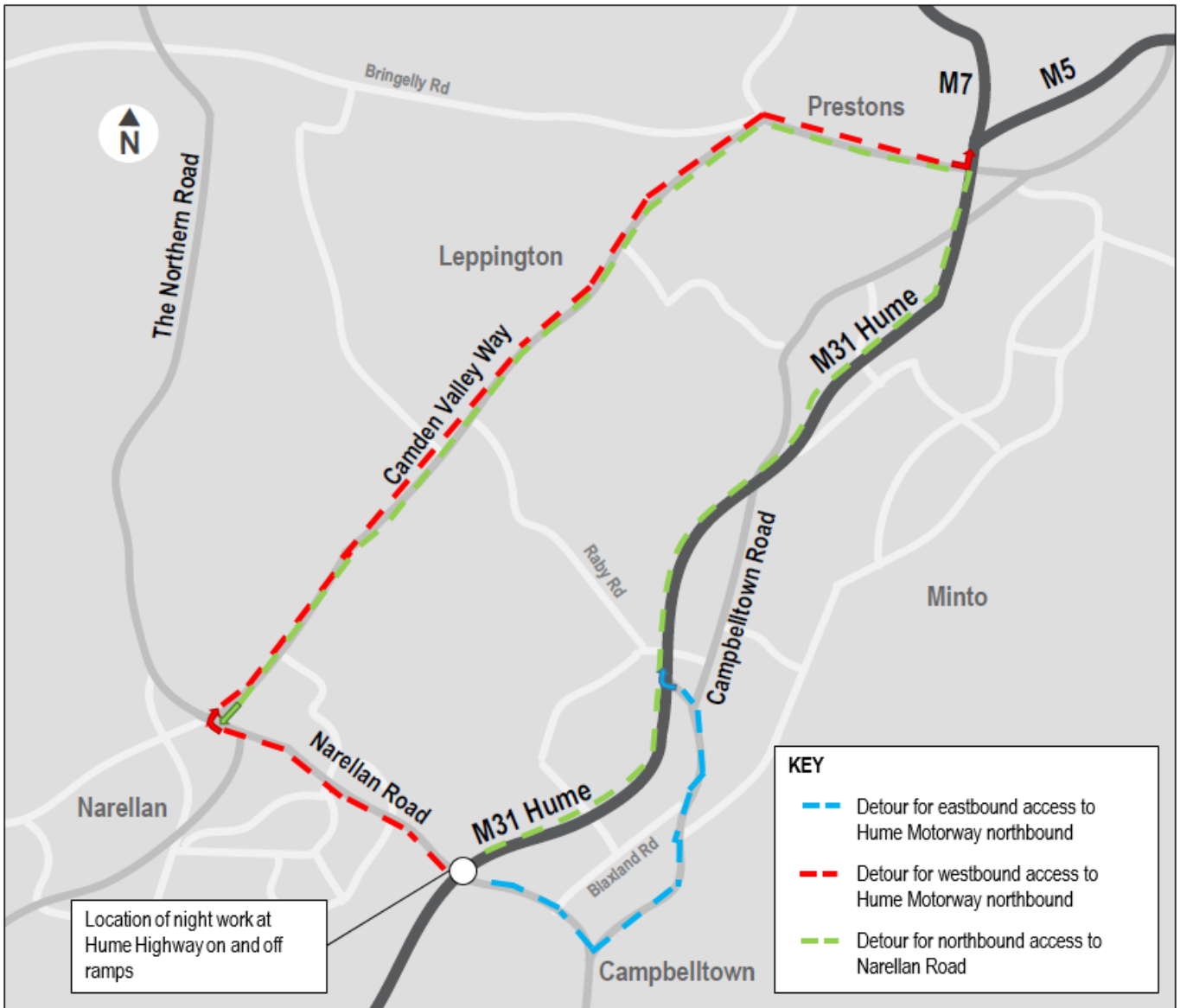
Please keep to the displayed speed limits and follow the direction of traffic controllers and signs. For the latest traffic updates, you can call 132 701, visit [livetraffic.com](http://livetraffic.com) or download the Live Traffic NSW App.

---

## Contact

If you have any questions, please contact our delivery partner, Seymour Whyte Constructions, on **1800 720 146** or [narellan\\_community@seymourwhyte.com.au](mailto:narellan_community@seymourwhyte.com.au). For more information on our projects, visit [www.rms.nsw.gov.au/roadprojects](http://www.rms.nsw.gov.au/roadprojects). Thank you for your patience during this important work.

## Location of work and detours



### Translating and Interpreting Service

If you need an interpreter, please call the Translating and Interpreting Service (TIS National) on **131 450** and ask them to telephone Roads and Maritime Services on 1800 720 146

#### Arabic

إذا كنتم بحاجة إلى مترجم، الرجاء الاتصال بخدمة الترجمة الحظية والشفهية (TIS National) على الرقم 1800 720 146، والطلب منهم الاتصال بوكالتكم Roads and Maritime Services على الرقم 131 450

#### Cantonese

若你需要口譯員，請致電 131 450 聯絡翻譯和口譯服務署 (TIS National)，要求他們致電 1800 720 146 聯絡 Roads and Maritime Services。

#### Mandarin

如果你需要口译员，请致电 131 450 联系翻译和口译服务署 (TIS National)，要求他们致电 1800 720 146 联系 Roads and Maritime Services。

#### Greek

Αν χρειάζεστε διερμηνέα, παρακαλείστε να τηλεφωνήσετε στην Υπηρεσία Μετάφρασης και Διερμηνείας (Εθνική Υπηρεσία TIS) στο **131 450** και ζητήστε να τηλεφωνήσουν Roads and Maritime Services στο 1800 720 146

#### Italian

Se desiderate l'assistenza di un interprete, prego telefonare al Servizio Interpreti e Traduttori (TIS National) al **131 450** chiedendo di contattare Roads and Maritime Services al 1800 720 146

#### Korean

통역사가 필요하시면 번역통역서비스 (TIS National) 에 **131 450** 으로 연락하여 이들에게 1800 720 146 번으로 Roads and Maritime Services 에 전화하도록 요청하십시오.

#### Vietnamese

Nếu cần thông ngôn viên, xin quý vị gọi cho Dịch Vụ Thông Phiên Dịch (TIS Toàn Quốc) qua số **131 450** và nhờ họ gọi cho Roads and Maritime Services qua số 1800 720 146

