



Australian Government

BUILDING OUR FUTURE



November 2017

Night work at the Narellan Road and M31 Hume Motorway interchange, Currans Hill on Saturday 25 November

The Australian and NSW governments are jointly funding the Narellan Road upgrade between Camden Valley Way, Narellan and Blaxland Road, Campbelltown.

Roads and Maritime Services is delivering this important project to reduce congestion and to improve safety and travel times. As part of this upgrade, new beams will be installed on the Narellan Road bridge over the M31 Hume Motorway. During this work temporary detours will be in place

Work will take place at night between **8pm Saturday 25 November** and **9am Sunday 26 November**, weather permitting. If work is delayed due to weather, work will take place the following weekend.

We have included detailed maps to show the location of the work and the detours.

How will the work affect you?

Our work may be noisy and will create extra lighting. We will complete noisier activities earlier in the night and direct lights away from properties and traffic.

Traffic changes

For the safety of motorists and workers, temporary traffic changes will be in place.

- The M31 Hume Motorway northbound lanes will be closed from the Narellan Road exit. All northbound traffic will be detoured off the motorway and across Narellan Road to re-join at the Narellan Road northbound on-ramp.
- The northbound M31 Hume Motorway on-ramp from Narellan Road for traffic from the Campbelltown area will be closed. Motorists from the Campbelltown area wanting to join the motorway heading north from Narellan Road will be detoured via Camden Valley Way.

Access will be maintained for motorists travelling on Narellan Road.

For safety reasons, a reduced speed limit of 40 kilometres/hour will be in place on Narellan Road adjacent to the bridge while work takes place.

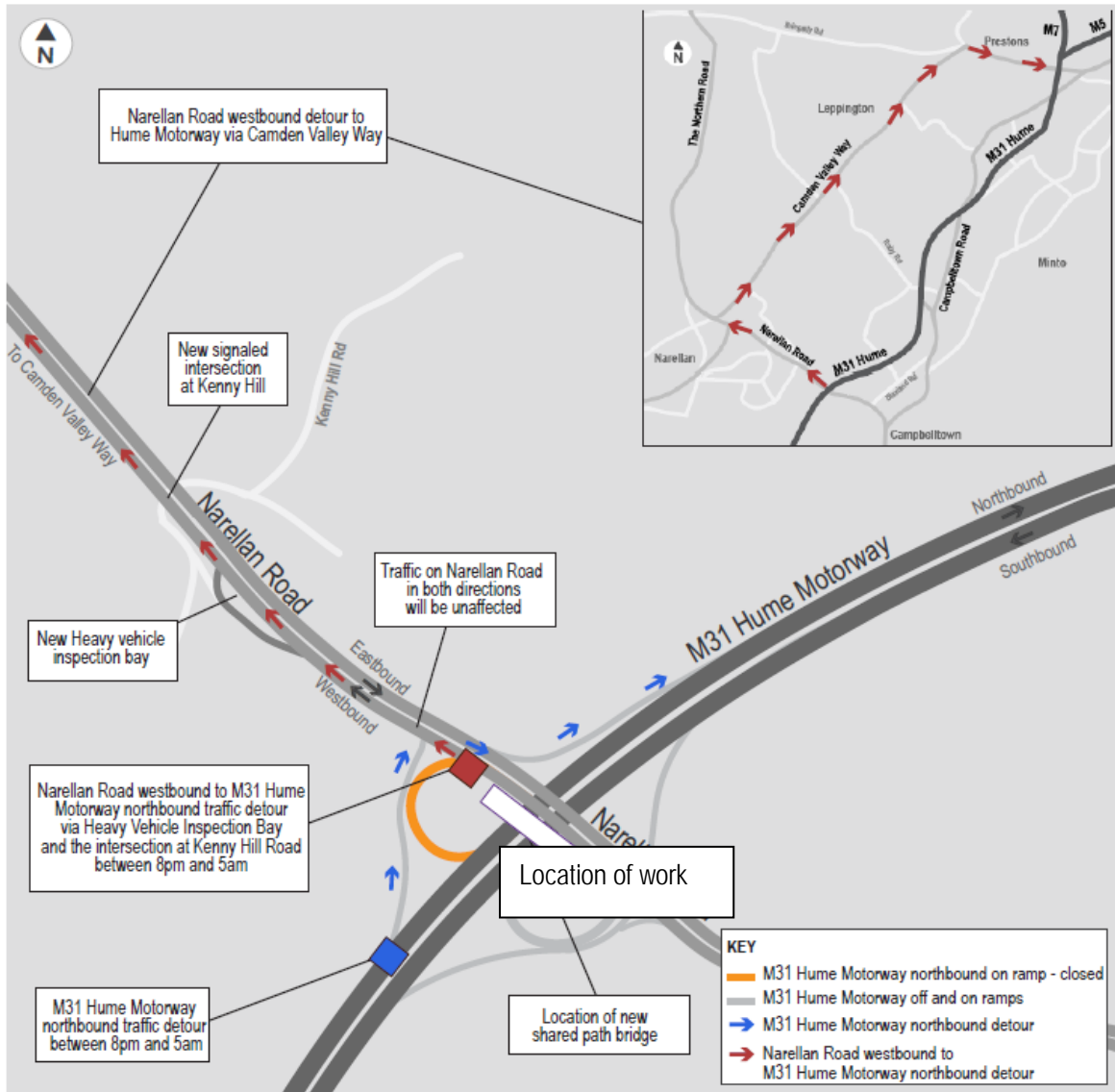
These traffic changes may cause some delays and motorists are advised to allow extra travel time.

Please keep to the displayed speed limits and follow the direction of traffic controllers and signs. For the latest traffic updates, you can call 132 701, visit livetraffic.com or download the Live Traffic NSW App.

Contact

If you have any questions, please contact our delivery partner, Seymour Whyte Constructions, on **1800 720 146** or narellan_community@seymourwhyte.com.au. For more information on our projects, visit www.rms.nsw.gov.au/roadprojects. Thank you for your patience during this important work.

Location of work and detours



Translating and Interpreting Service

If you need an interpreter, please call the Translating and Interpreting Service (TIS National) on **131 450** and ask them to telephone Roads and Maritime Services on 1800 720 146

Arabic

إذا كنتم بحاجة إلى مترجم، الرجاء الاتصال بخدمة الترجمة الخطية والشفوية (TIS National) على الرقم **131 450**، والطلب منهم الاتصال بوكالتكم Roads and Maritime Services على الرقم 1800 720 146

Cantonese

若你需要口譯員，請致電 **131 450** 聯絡翻譯和口譯服務署 (TIS National)，要求他們致電 1800 720 146 聯絡 Roads and Maritime Services。

Mandarin

如果你需要口译员，请致电 **131 450** 联系翻译和口译服务署 (TIS National)，要求他们致电 1800 720 146 联系 Roads and Maritime Services。

Greek

Αν χρειάζεστε διερμηνέα, παρακαλείστε να τηλεφωνήσετε στην Υπηρεσία Μετάφρασης και Διερμηνείας (Εθνική Υπηρεσία ΤΙΣ) στο **131 450** και ζητήστε να τηλεφωνήσουν Roads and Maritime Services στο 1800 720 146

Italian

Se desiderate l'assistenza di un interprete, prego telefonare al Servizio Interpreti e Traduttori (TIS National) al **131 450** chiedendo di contattare Roads and Maritime Services al 1800 720 146

Korean

통역사가 필요하시면 번역통역서비스 (TIS National) 에 **131 450** 으로 연락하여 이들에게 1800 720 146 번으로 Roads and Maritime Services 에 전화하도록 요청하십시오.

Vietnamese

Nếu cần thông ngôn viên, xin quý vị gọi cho Dịch Vụ Thông Phiên Dịch (TIS Toàn Quốc) qua số **131 450** và nhờ họ gọi cho Roads and Maritime Services qua số 1800 720 146

