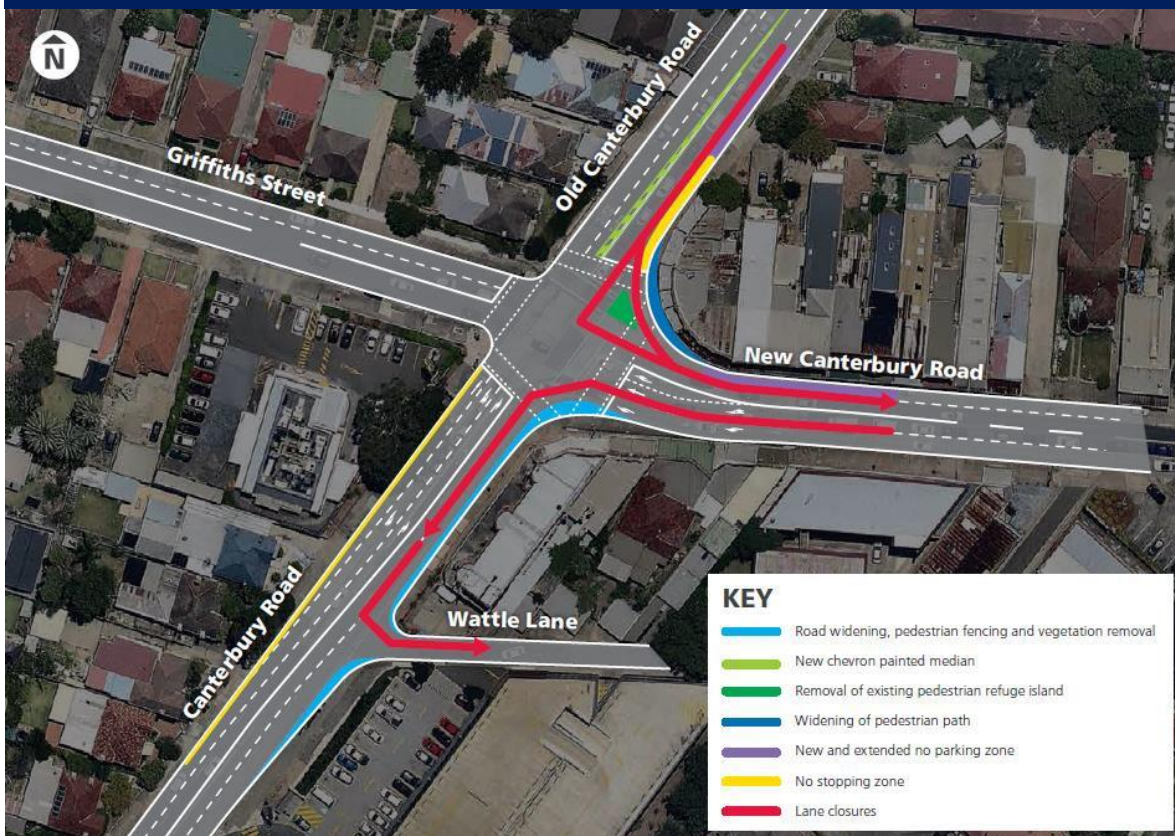


# Intersection improvements at Canterbury Road and New Canterbury Road, Dulwich Hill

## Project update

Roads and Maritime Services | April 2019

Location of work on Canterbury and New Canterbury Road, Dulwich Hill



The NSW Government is investing in easing congestion and improving travel time on Sydney's key corridors.

High volumes of traffic currently travel through the Canterbury Road and New Canterbury Road intersection at Dulwich Hill and Hurlstone Park.

This project aims to reduce waiting times for vehicles turning right from Canterbury Road onto New Canterbury Road.

### Key benefits

- Improve traffic flow at the intersection
- Improve road safety and help reduce the number of crashes
- Ease congestion and improve travel time reliability

### What's happening next?

- Night work will continue along Canterbury Road and New Canterbury Road
- Continued relocation of utilities and services
- Demolition of existing pavement, footpaths and kerb to allow for the relocation of underground services
- Modification of traffic lights and signs
- Construction of new footpath, kerb, road surface and pedestrian crossing
- Asphaltting works
- New line marking

## Traffic changes and lane closures

There will be temporary traffic changes during our work to ensure the work zone is safe.

The right turn lane from New Canterbury Road into Old Canterbury Road Northbound will be closed from **February to mid May 2019**. Traffic signage and a detour will be in place to assist motorists through these changed conditions.

Lane closures and speed reductions will be in place for **one weekend in May 2019**.

During this weekend only, the working hours will be from **8pm Friday to 5am Monday**.

Traffic management and signs will be in place to assist motorists with the changed conditions.

Pedestrian access will be maintained at all times, although temporary detours may be in place.

Please keep to speed limits and follow signs and traffic controllers' directions.

For the latest traffic updates, you can call 132 701, visit [livetraffic.com](http://livetraffic.com) or download the Live Traffic NSW App.

## Work to date

Since our last project update we have completed:

- Installation of signs and barriers
- Utilities and services relocations
- Removal of traffic island
- Construction of new pavement, footpaths and kerbs

## Our work schedule

During **April and May 2019**, we will be working **five nights and six days a week**, weather permitting.

Our standard night work hours will be between **8pm and 5am** from **Sunday to Thursday**.

Our day work hours will be between **7am and 6pm** from **Monday to Friday** and between **8am and 1pm** on **Saturday**.

Work will not be carried out on public holidays

## How will the work affect you?

Our work may be noisy at times, but we will do everything we can to minimise its impact and complete the noisier activities by midnight.

Thank you for your patience during this important work.

## Contact

If you have any questions, please contact our delivery partner, Downer Group, on **1800 931 779** or **ESC.RMS.Canterbury@Downergroup.com**.

For more information on our projects, visit **[rms.nsw.gov.au](http://rms.nsw.gov.au)**.



### Translating and Interpreting Service

If you need an interpreter, please call the Translating and Interpreting Service (TIS National) on **131 450** and ask them to telephone Roads and Maritime Services on 1800 931 779

#### Arabic

إذا كنتم بحاجة إلى مترجم، الرجاء الاتصال بخدمة الترجمة الخطية والشفهية (TIS National) على الرقم 1800 931 779 والطلب منهم الاتصال بوكالتكم Roads and Maritime Services على الرقم **131 450**

#### Cantonese

若你需要口譯員，請致電 **131 450** 聯絡翻譯和口譯服務署 (TIS National)，要求他們致電 1800 931 779 聯絡 Roads and Maritime Services。

#### Mandarin

如果你需要口译员，请致电 **131 450** 联系翻译和口译服务署 (TIS National)，要求他们致电 1800 931 779 联系 Roads and Maritime Services。

#### Greek

Αν χρειάζεστε διερμηνέα, παρακαλείστε να τηλεφωνήσετε στην Υπηρεσία Μετάφρασης και Διερμηνείας (Εθνική Υπηρεσία ΤΙΣ) στο **131 450** και ζητήστε να τηλεφωνήσουν Roads and Maritime Services στο 1800 931 779

#### Italian

Se desiderate l'assistenza di un interprete, prego telefonare al Servizio Interpreti e Traduttori (TIS National) al **131 450** chiedendo di contattare Roads and Maritime Services al 1800 931 779

#### Korean

통역사가 필요하시면 번역통역서비스 (TIS National) 에 **131 450** 으로 연락하여 이들에게 1800 931 779 번으로 Roads and Maritime Services 에 전화하도록 요청하십시오.

#### Vietnamese

Nếu cần thông ngôn viên, xin quý vị gọi cho Dịch Vụ Thông Phiên Dịch (TIS Toàn Quốc) qua số **131 450** và nhờ họ gọi cho Roads and Maritime Services qua số 1800 931 779



Privacy Roads and Maritime Services ("RMS") is subject to the Privacy and Personal Information Protection Act 1998 ("PIIP Act") which requires that we comply with the Information Privacy Principles set out in the PIIP Act. All information in correspondence is collected for the sole purpose of assisting in the delivery this project. The information received, including names and addresses of respondents, may be published in subsequent documents unless a clear indication is given in the correspondence that all or part of that information is not to be published. Otherwise RMS will only disclose your personal information, without your consent, if authorised by the law. Your personal information will be held by RMS at 266 King St Newcastle NSW 2300. You have the right to access and correct the information if you believe that it is incorrect.