

Appendix B

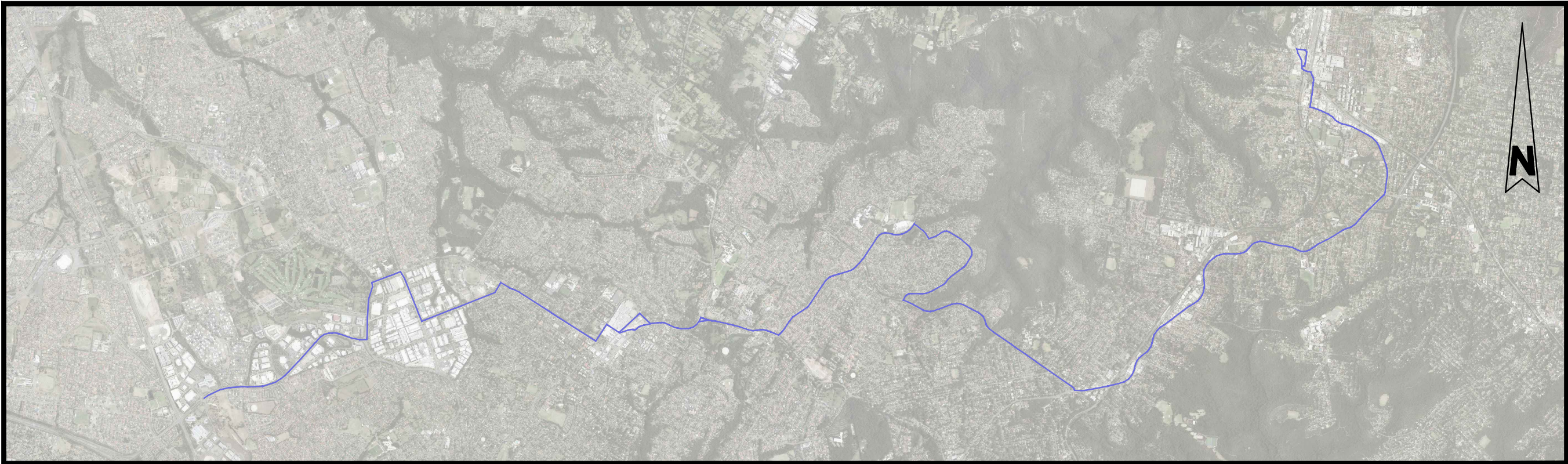
Revised Concept Drawings

Roads and Maritime Services: RMS 18.709
ISBN (online): 978-1-925737-70-7
ISBN (print): 978-1-925737-71-4

RAPID BUS ROUTE ASSESSMENT

ROUTE 11 DETAILED CONCEPTS

JOB NUMBER: P2092



LOCALITY PLAN

DRAWING SCHEDULE			
PROJECT No.	SHEET No.	DRAWING REVISION	SHEET TITLE
P2092	1	005	PROJECT COVER SHEET
P2092	100	004	Route 5B, 618, 628, 715, 745, T62, T64, T70 TSN 2153140 & 215385 BITZIOS REF #11 & 12
P2092	101	005	Route 601, 619, T71 TSN 215467 BITZIOS REF #20
P2092	102	006	Route 619, 715, T70, T71 TSN 215493 & 215469 BITZIOS REF #23 & 24
P2092	103	004	NOT USED
P2092	104	004	NOT USED
P2092	105	004	NOT USED
P2092	106	004	NOT USED
P2092	107	004	Route 600, 603, 621, 631, 632, 633, 635, 644, 651, M60 TSN 2154386 BITZIOS REF #37
P2092	108	004	Route 600, 633, 635, 651, M60 TSN 2154186 BITZIOS REF #41
P2092	109	004	Route 600, 631, 633, 635, 651, 652X, M60 TSN 2154173 BITZIOS REF #43
P2092	110	004	Route 600, 631, 633, 635, 651, 652X, M60 TSN 2154173 BITZIOS REF #43
P2092	111	005	Route N/A TSN New Stop BITZIOS REF #46

P2092	112	004	Route M60 TSN 2126136 BITZIOS REF #49
P2092	113	004	NOT USED
P2092	114	004	NOT USED
P2092	115	004	NOT USED
P2092	116	004	Route 600, 620X, 621, 622, 626, M60 TSN 212692 & 212677 BITZIOS REF #67 & 68
P2092	117	004	Route N/A TSN New Stop & New Stop BITZIOS REF #69 & 70
P2092	118	004	Route 600, 620X, 621, 622, 626, M60 TSN 212678 & 212691 BITZIOS REF #71 & 72
P2092	119	004	Route M60 TSN 2120165 BITZIOS REF #99
P2092	120	004	Route N/A TSN New Stop BITZIOS REF #102
P2092	121	006	Route 589, M60 TSN 207614 BITZIOS REF #108
P2092	122	005	Route 589, M60 TSN 207619 BITZIOS REF #112
P2092	123	005	Route 589, M60 TSN 207619 BITZIOS REF #112
P2092	124	004	Route 587, 589, M60 TSN 2077158 & 207735 BITZIOS REF #122 & 123

REVISIONS			
Issue	Revisions/Descriptions	Drawn	Date
001	CONCEPT PLANS	D.C	15.11.2016
002	CONCEPT PLANS	C.W	21.12.2016
003	CONCEPT PLANS	G.Y	01.05.2017
004	CONCEPT PLANS	C.H	07.11.2017
005	CONCEPT PLANS	C.H	15.11.2017
006	CONCEPT PLANS	C.H	24.11.2017
007	CONCEPT PLANS	M.H	14.12.2017

Scale @ A3

0

2

4

6

8

10

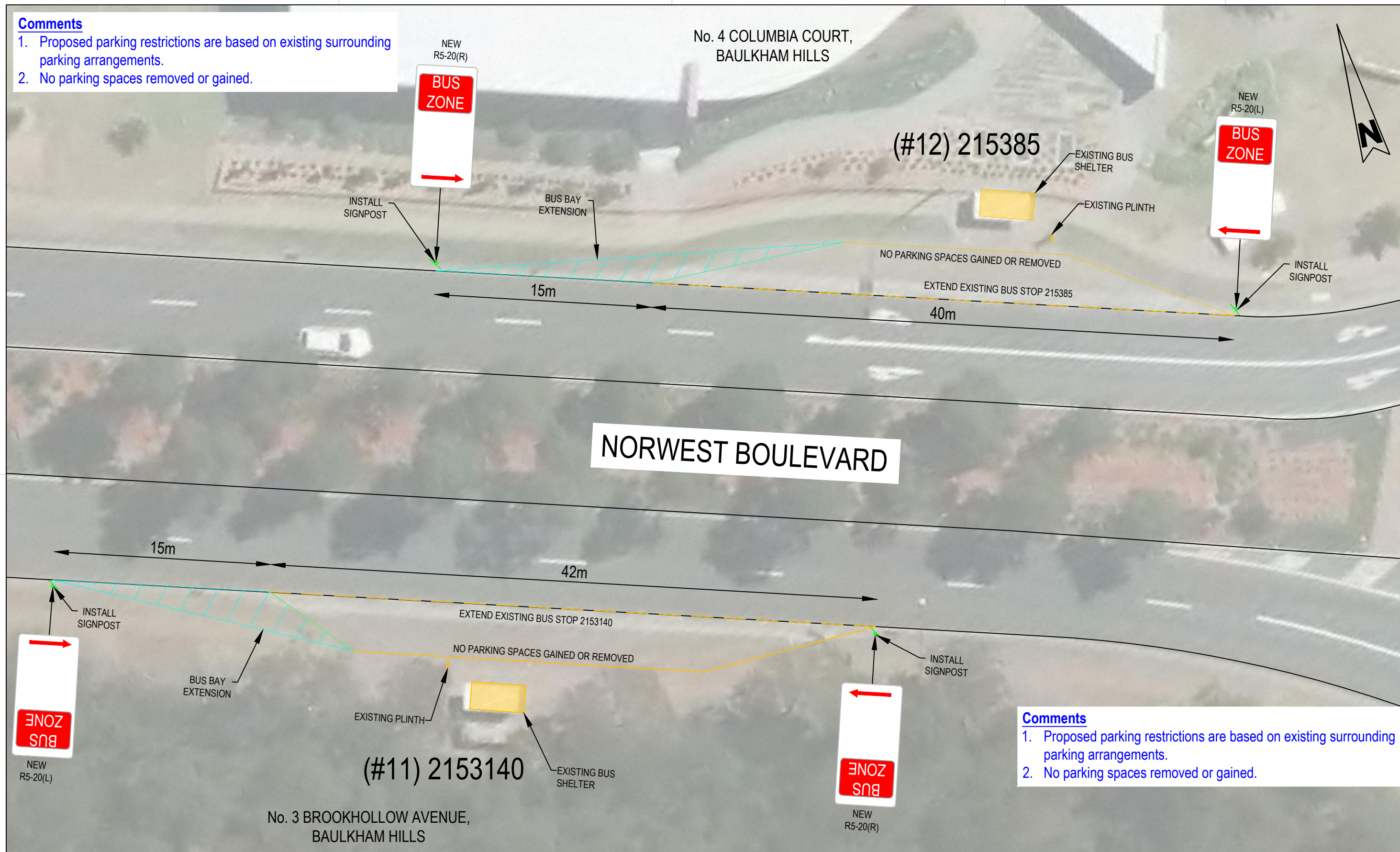
12

1:250

Project RAPID BUS ROUTE ASSESSMENT	Design D.C	Drawn M.H	Checked T.W
	CONCEPT ONLY		
	Date 14.12.2017		
Title PROJECT COVER SHEET	Project Number P2092	Sheet Number 1	Issue 007

Comments

- Proposed parking restrictions are based on existing surrounding parking arrangements.
- No parking spaces removed or gained.



Comments

- Proposed parking restrictions are based on existing surrounding parking arrangements.
- No parking spaces removed or gained.

REVISIONS			
Issue	Revisions/Descriptions	Drawn	Date
001	CONCEPT PLANS	D.C	15.11.2016
002	NOT USED	-	-
003	NOT USED	-	-
004	CONCEPT PLANS	C.H	08.11.2017

Scale @ A3 0 2 4 6 8 10 12 1:250

Project RAPID BUS ROUTE ASSESSMENT		Design D.C	Drawn C.H	Checked T.W
Title ROUTE 5B, 618, 628, 715, 745, T62, T64, T70 TSN 2153140 & 215385 BITZIOS REF #11 & 12		CONCEPT ONLY		
Project Number P2092		Sheet Number 100		Date 08.11.2017
				Issue 004

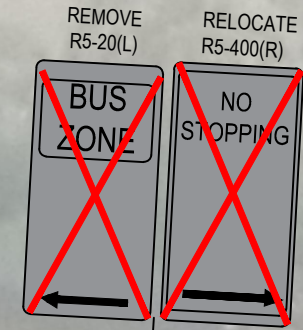
Comments

1. Proposed parking restrictions are based on existing surrounding parking arrangements.
2. No stopping zone compliant with *Roads and Maritime Services TDT 2002/12C*.
3. No parking spaces removed or gained.



No. 27 VICTORIA AVENUE,
CASTLE HILL

(#20) 215467



EXISTING BUS SHELTER

EXISTING SIGNPOST

REMOVE SIGNPOST

NO PARKING REMOVED OR GAINED

REMOVE BUS STOP 215467

33m

VICTORIA AVENUE

REVISIONS			
Issue	Revisions/Descriptions	Drawn	Date
001	CONCEPT PLANS	D.C	15.11.2016
002	CONCEPT PLANS	C.W	21.12.2016
003	NOT USED	-	-
004	CONCEPT PLANS	C.H	08.11.2017
005	CONCEPT PLANS	C.H	15.11.2017

Scale @ A3

1:250

Project	RAPID BUS ROUTE ASSESSMENT	
Title	ROUTE 601, 619, T71 TSN 215467 BITZIOS REF #20	

Design	D.C	Drawn	C.H	Checked	T.W
CONCEPT ONLY					
Project Number	P2092	Sheet Number	101	Date	15.11.2017
		Issue	005		

Comments

- 1. Proposed parking restrictions are based on existing surrounding parking arrangements.
- 2. No parking spaces removed or gained.

EXISTING
R5-40(LR)

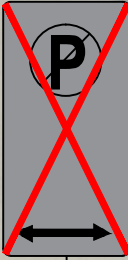


EXISTING
SIGNPOST

No. 15 CARRINGTON ROAD,
CASTLE HILL

(#24)215469

REMOVE
R5-40(LR)



REMOVE
PLINTH

REMOVE
SIGNPOST

NO PARKING SPACES GAINED OR REMOVED

REMOVE BUS STOP 215469

21m

CARRINGTON ROAD

19m

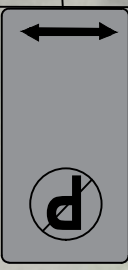
REMOVE BUS STOP 215493

NO PARKING SPACES GAINED OR REMOVED

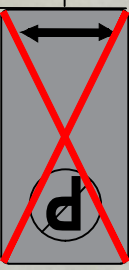
EXISTING
POWERPOLE

REMOVE
PLINTH

REMOVE
SIGNPOST



EXISTING
R5-40(LR)



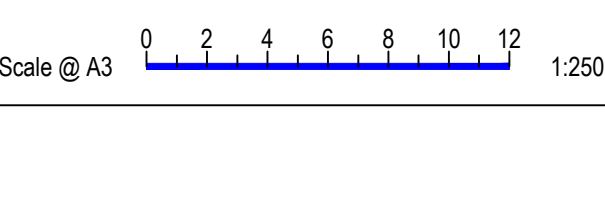
REMOVE
R5-40(LR)

(#23) 215493

Comments

- 1. Proposed parking restrictions are based on existing surrounding parking arrangements.
- 2. No parking spaces removed or gained.

REVISIONS		Drawn	Date
Issue	Revisions/Descriptions		
001	CONCEPT PLANS	D.C	15.11.2016
002	CONCEPT PLANS	C.W	21.12.2016
003	NOT USED	-	-
004	CONCEPT PLANS	C.H	08.11.2017
005	NOT USED	-	-
006	CONCEPT PLANS	C.H	24.11.2017

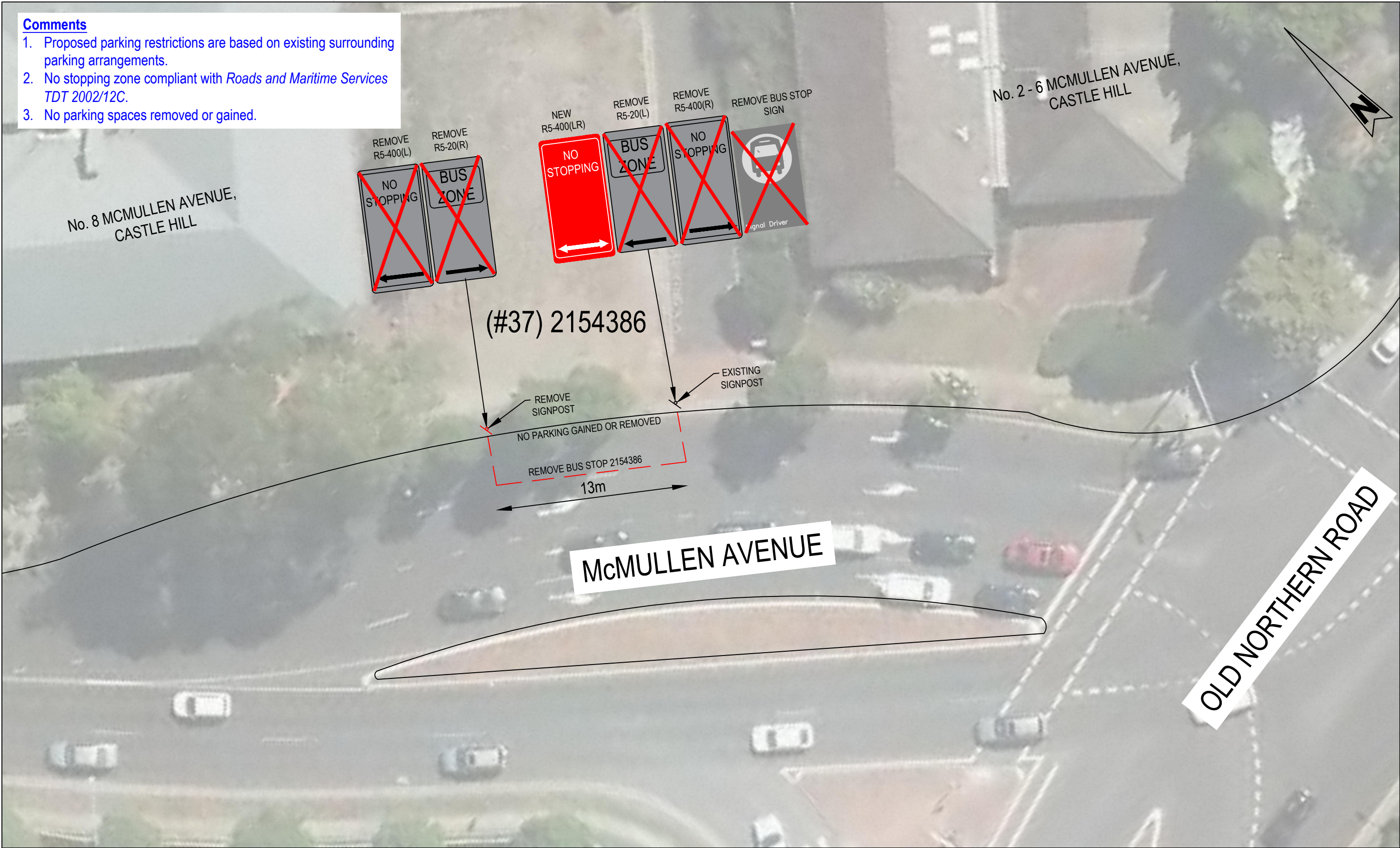


Project	RAPID BUS ROUTE ASSESSMENT	
Title	ROUTE 619, 715, T70, T71 TSN 215493 & 215469 BITZIOS REF #23 & 24	

Design	D.C	Drawn	C.H	Checked	T.W
CONCEPT ONLY					
Project Number	P2092	Sheet Number	102	Date	24.11.2017
				Issue	006

Comments

- 1. Proposed parking restrictions are based on existing surrounding parking arrangements.
- 2. No stopping zone compliant with Roads and Maritime Services TDT 2002/12C.
- 3. No parking spaces removed or gained.



BITZIOS

consulting

traffic engineering ■ transport planning

Gold Coast

Suite 26, 58 Riverwalk Avenue, Robina QLD 4226.

P: (07) 5562-5377

W: www.bitziosconsulting.com.au

Brisbane

Level 2, 428 Upper Edward Street, Spring Hill 4000.

P: (07) 3831-4442

E: admin@bitziosconsulting.com.au

Sydney

Studio 203, 3 Gladstone Street, Newtown NSW 2042.

P: (02) 9557 6202

REVISIONS		Drawn	Date
Issue	Revisions/Descriptions		
001	CONCEPT PLANS	D.C	15.11.2016
002	CONCEPT PLANS	C.W	21.12.2016
003	NOT USED	-	-
004	CONCEPT PLANS	C.H	08.11.2017

Scale @ A3

0

2

4

6

8

10

12

1:250

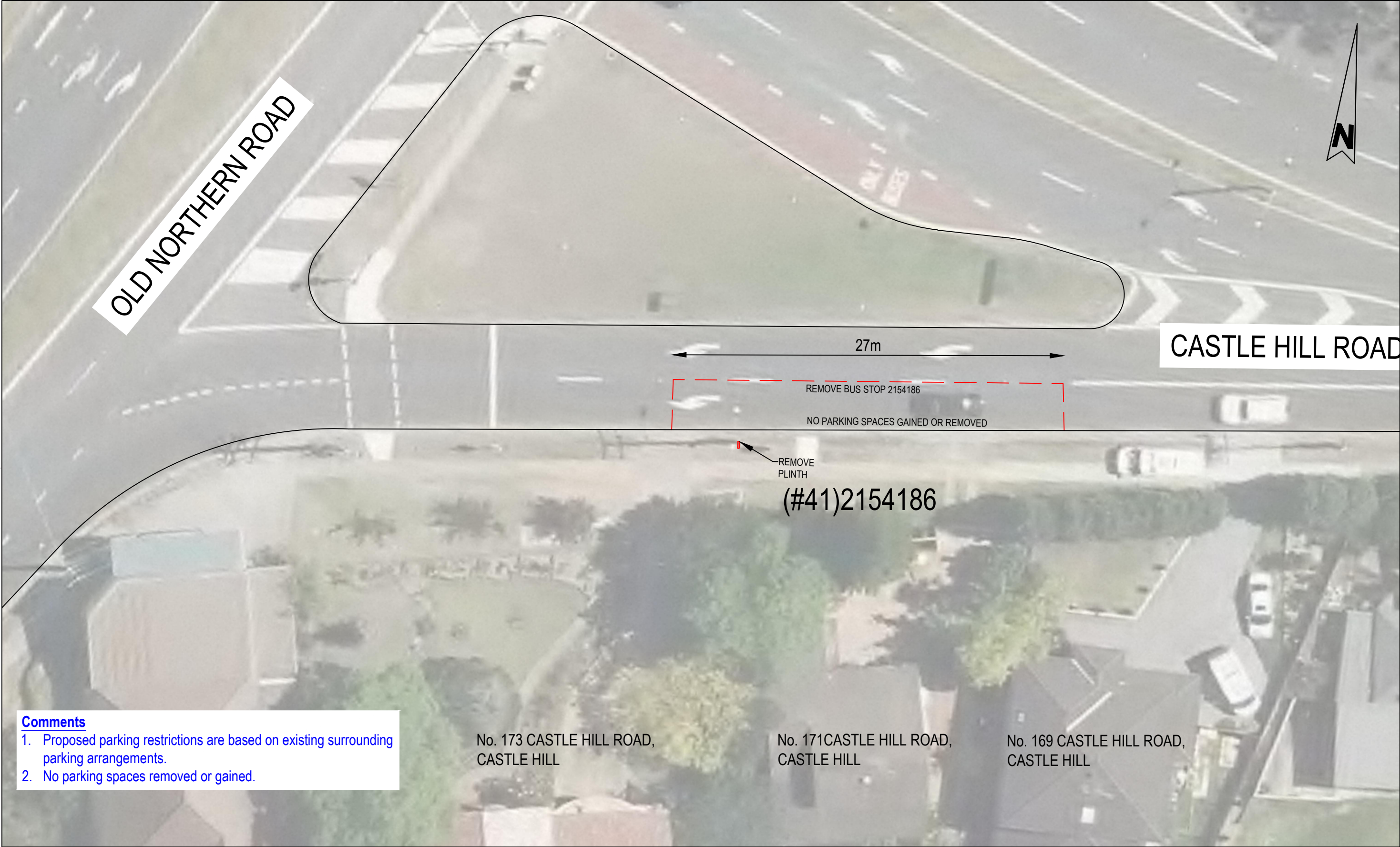
Project

RAPID BUS ROUTE ASSESSMENT

Title

ROUTE 600, 603, 621, 631, 632, 633, 635, 644, 651, M60
TSN 2154386
BITZIOS REF #37

Design	Drawn	Checked
D.C	C.H	T.W
CONCEPT ONLY		Date
		08.11.2017
Project Number	Sheet Number	Issue
P2092	107	004



Comments

- 1. Proposed parking restrictions are based on existing surrounding parking arrangements.
- 2. No parking spaces removed or gained.

No. 173 CASTLE HILL ROAD,
CASTLE HILL

No. 171CASTLE HILL ROAD,
CASTLE HILL

No. 169 CASTLE HILL ROAD,
CASTLE HILL

BITZIOS

consulting

traffic engineering ■ transport planning

Gold Coast

Suite 26, 58 Riverwalk Avenue, Robina QLD 4226.

P: (07) 5562-5377

W: www.bitziosconsulting.com.au

Brisbane

Level 2, 428 Upper Edward Street, Spring Hill 4000.

P: (07) 3831-4442

E: admin@bitziosconsulting.com.au

Sydney

Studio 203, 3 Gladstone Street, Newtown NSW 2042.

P: (02) 9557 6202

Issue	REVISIONS Revisions/Descriptions	Drawn	Date
001	CONCEPT PLANS	D.C	15.11.2016
002	NOT USED	-	-
003	NOT USED	-	-
004	CONCEPT PLANS	C.H	08.11.2017

Scale @ A3

0

2

4

6

8

10

12

1:250

Project

RAPID BUS ROUTE ASSESSMENT

Title

ROUTE 600, 633, 635, 651, M60
TSN 2154186
BITZIOS REF #41

Design	Drawn	Checked
D.C	C.H	T.W
CONCEPT ONLY		Date
		08.11.2017
Project Number	Sheet Number	Issue
P2092	108	004



Comments

- 1. Proposed parking restrictions are based on existing surrounding parking arrangements.
- 2. No parking spaces removed or gained.

BITZIOS

consulting

traffic engineering ■ transport planning

Gold Coast

Suite 26, 58 Riverwalk Avenue, Robina QLD 4226.

P: (07) 5562-5377

W: www.bitziosconsulting.com.au

Brisbane

Level 2, 428 Upper Edward Street, Spring Hill 4000.

P: (07) 3831-4442

E: admin@bitziosconsulting.com.au

Sydney

Studio 203, 3 Gladstone Street, Newtown NSW 2042.

P: (02) 9557 6202

Issue	REVISIONS Revisions/Descriptions	Drawn	Date
001	CONCEPT PLANS	D.C	15.11.2016
002	NOT USED	-	-
003	NOT USED	-	-
004	CONCEPT PLANS	C.H	08.11.2017

Scale @ A3

024681012

1:250

Project

RAPID BUS ROUTE ASSESSMENT

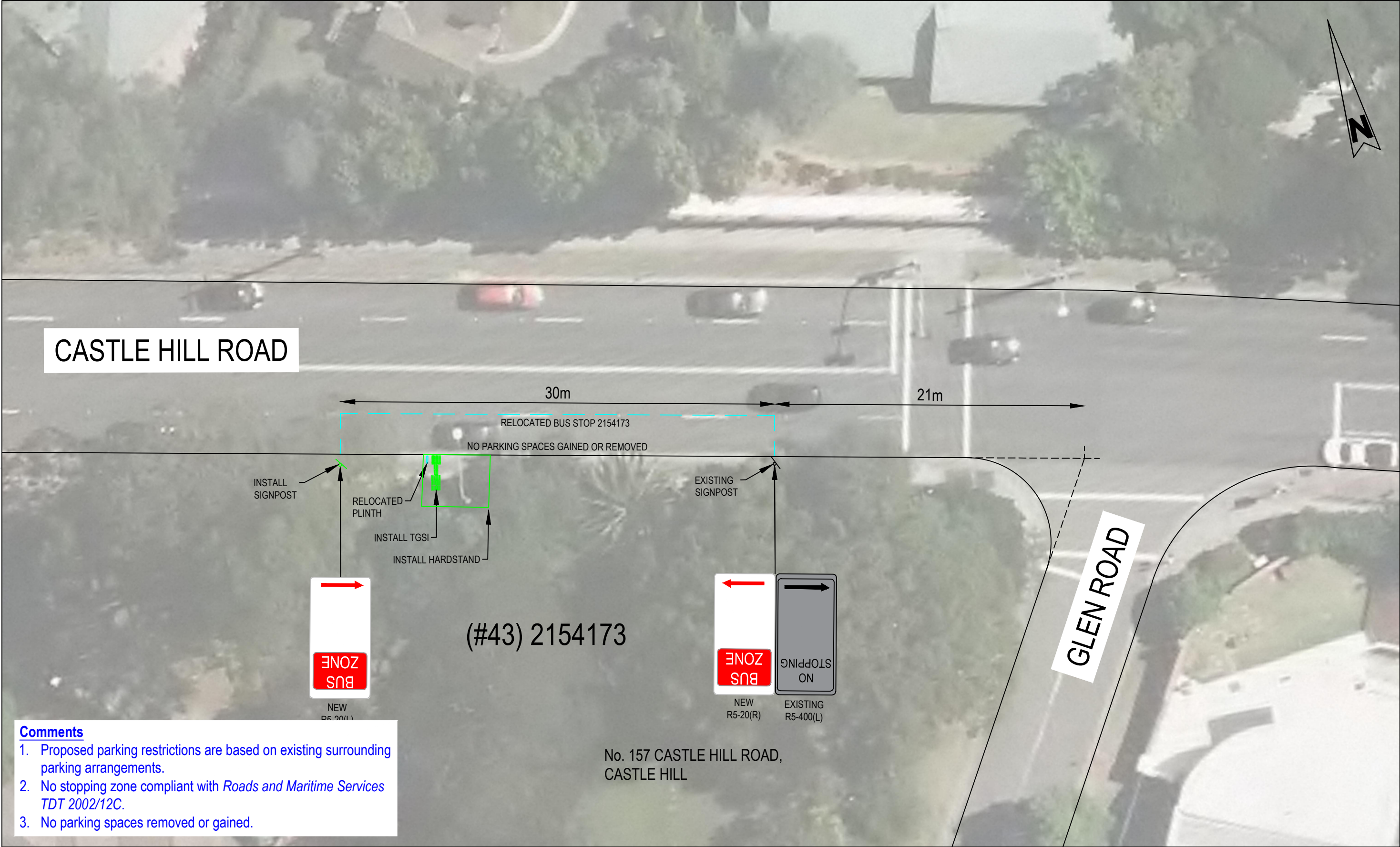
Title

ROUTE 600, 631, 633, 635, 651, 652X, M60

TSN 2154173

BITZIOS REF #43

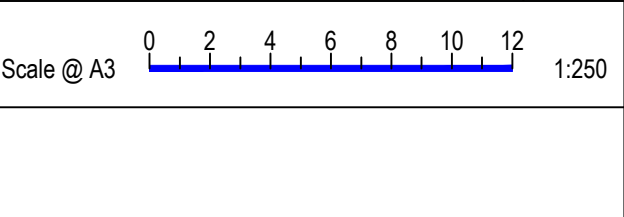
Design	Drawn	Checked
D.C	C.H	T.W
CONCEPT ONLY		Date
P2092		08.11.2017
Project Number	Sheet Number	Issue
P2092	109	004



Comments

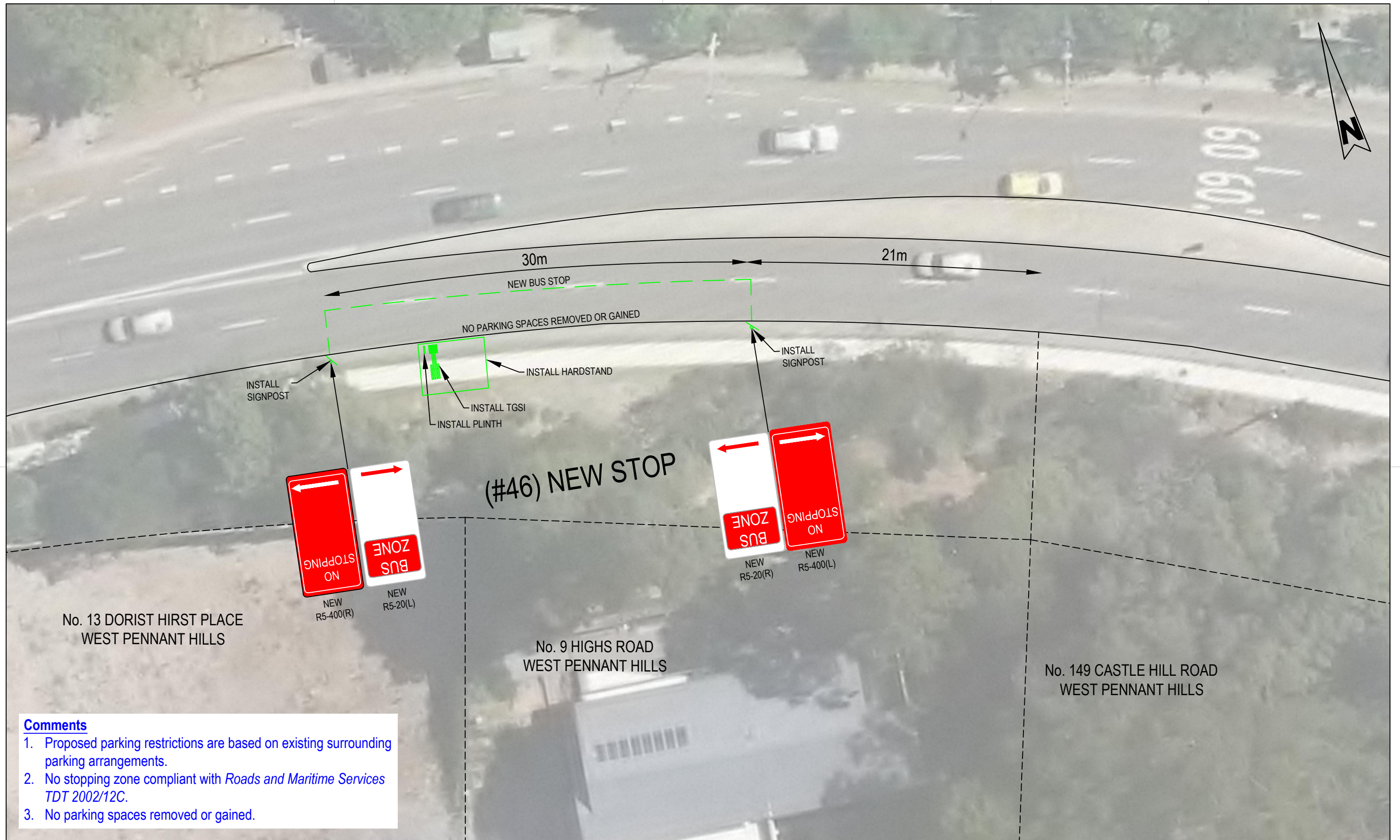
1. Proposed parking restrictions are based on existing surrounding parking arrangements.
2. No stopping zone compliant with *Roads and Maritime Services TDT 2002/12C*.
3. No parking spaces removed or gained.

REVISIONS			
Issue	Revisions/Descriptions	Drawn	Date
001	CONCEPT PLANS	D.C	15.11.2016
002	CONCEPT PLANS	C.W	21.12.2016
003	NOT USED	-	-
004	CONCEPT PLANS	C.H	08.11.2017



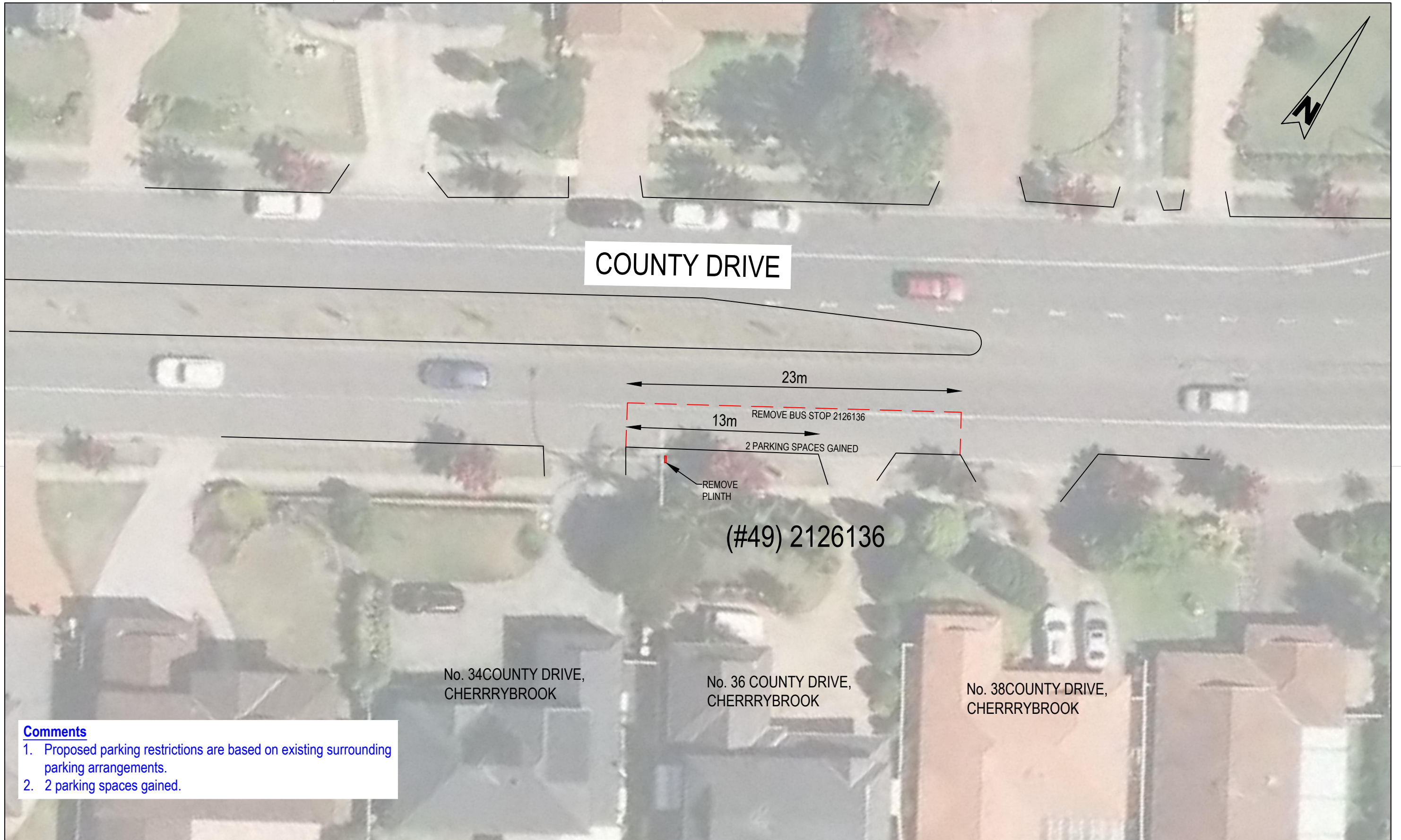
Project	RAPID BUS ROUTE ASSESSMENT	
Title	ROUTE 600, 631, 633, 635, 651, 652X, M60 TSN 2154173 BITZIOS REF #43	

Design	D.C	Drawn	C.H	Checked	T.W
CONCEPT ONLY					
Project Number	P2092	Sheet Number	110	Date	08.11.2017
				Issue	004



- Comments**
1. Proposed parking restrictions are based on existing surrounding parking arrangements.
 2. No stopping zone compliant with *Roads and Maritime Services TDT 2002/12C*.
 3. No parking spaces removed or gained.

<div>BITZIOS</div> <div>consulting</div> <div>traffic engineering ■ transport planning</div>	<div>Gold Coast</div> <div>Suite 26, 58 Riverwalk Avenue, Robina QLD 4226.</div> <div>P: (07) 5562-5377</div> <div>W: www.bitziosconsulting.com.au</div> <div>Brisbane</div> <div>Level 2, 428 Upper Edward Street, Spring Hill 4000.</div> <div>P: (07) 3831-4442</div> <div>E: admin@bitziosconsulting.com.au</div> <div>Sydney</div> <div>Studio 203, 3 Gladstone Street, Newtown NSW 2042.</div> <div>P: (02) 9557 6202</div>	REVISIONS		Scale @ A3	<div>024681012</div> <div>1:250</div>	Project	RAPID BUS ROUTE ASSESSMENT	Design	Drawn	Checked				
		Issue	Revisions/Descriptions					Drawn	Date	D.C	M.H	T.W		
		001	CONCEPT PLANS					D.C	15.11.2016	CONCEPT ONLY			Date	14.12.2017
		002	CONCEPT PLANS					C.W	21.12.2016					
		003	NOT USED	-	-	Title		ROUTE N/A	TSN NEW STOP	BITZIOS REF #46	Project Number	Sheet Number	Issue	
		004	CONCEPT PLANS	C.H	08.11.2017						P2092	111	005	
		005	CONCEPT PLANS	M.H	14.12.2017									



COUNTY DRIVE

(#49) 2126136

No. 34COUNTY DRIVE,
CHERRRYBROOK

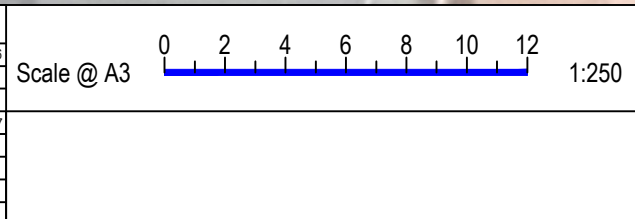
No. 36 COUNTY DRIVE,
CHERRRYBROOK

No. 38COUNTY DRIVE,
CHERRRYBROOK

Comments

- 1. Proposed parking restrictions are based on existing surrounding parking arrangements.
- 2. 2 parking spaces gained.

REVISIONS			
Issue	Revisions/Descriptions	Drawn	Date
001	CONCEPT PLANS	D.C	15.11.2016
002	NOT USED	-	-
003	NOT USED	-	-
004	CONCEPT PLANS	C.H	08.11.2017



Project	RAPID BUS ROUTE ASSESSMENT
Title	ROUTE M60 TSN 2126136 BITZIOS REF #49

Design	D.C	Drawn	C.H	Checked	T.W
CONCEPT ONLY					Date 08.11.2017
Project Number	P2092	Sheet Number	112	Issue	004

Comments

1. Proposed parking restrictions are based on existing surrounding parking arrangements.
2. 3 parking spaces gained.

No. 85 FRANCIS GREENWAY DRIVE,
CHERRYBROOK

No. 87 FRANCIS GREENWAY DRIVE,
CHERRYBROOK

No. 89 FRANCIS GREENWAY DRIVE,
CHERRYBROOK

(#67) 212692

REMOVE
PLINTH

3 PARKING SPACES GAINED
CONSOLIDATE BUS STOP 212692

18m

15m

CONSOLIDATE BUS STOP 212692

2 PARKING SPACES GAINED

REMOVE
PLINTH

(#68) 212677

No. 124 FRANCIS GREENWAY DRIVE,
CHERRYBROOK

No. 126 FRANCIS GREENWAY DRIVE,
CHERRYBROOK

PARKHILL CRESCENT
(NORTH)

Comments

1. Proposed parking restrictions are based on existing surrounding parking arrangements.
2. 2 parking spaces gained.

REVISIONS			
Issue	Revisions/Descriptions	Drawn	Date
001	CONCEPT PLANS	D.C	15.11.2016
002	CONCEPT PLANS	C.W	21.12.2016
003	NOT USED	-	-
004	CONCEPT PLANS	C.H	09.11.2017

Scale @ A3 0 2 4 6 8 10 12 1:250

Project RAPID BUS ROUTE ASSESSMENT		Design D.C	Drawn C.H	Checked T.W
Title ROUTE 600, 620X, 621, 622, 626, M60 TSN 212692 & 212677 BITZIOS REF #67 & 68		CONCEPT ONLY		
		Project Number P2092	Sheet Number 116	Date 09.11.2017
			Issue 004	

Comments

1. Proposed parking restrictions are based on existing surrounding parking arrangements.
2. 3 parking spaces removed.

No. 75 FRANCIS GREENWAY DRIVE,
CHERRYBROOK

No. 77 FRANCIS GREENWAY DRIVE,
CHERRYBROOK

(#69) NEW STOP

NEW
R5-20(L)

BUS
ZONE

NEW
R5-20(R)

BUS
ZONE

INSTALL HARDSTAND
INSTALL PLINTH
INSTALL TGS

INSTALL
SIGNPOST

3 PARKING SPACES REMOVED

NEW CONSOLIDATED BUS STOP

7m

18m

FRANCIS GREENWAY DRIVE

12m

27m

INSTALL
SIGNPOST

NEW CONSOLIDATED BUS STOP

5 PARKING SPACES REMOVED

INSTALL
SIGNPOST

INSTALL HARDSTAND

INSTALL TGS

INSTALL PLINTH

INSTALL 1.5m WIDE
FOOTPATH

NEW
R5-400(R)

NEW
R5-20(L)

BUS
STOPPING
NO

BUS
ZONE

(#70) NEW STOP

NEW
R5-20(R)

BUS
ZONE

No. 110 FRANCIS GREENWAY DRIVE,
CHERRYBROOK

No. 112 FRANCIS GREENWAY DRIVE,
CHERRYBROOK

Comments

1. Proposed parking restrictions are based on existing surrounding parking arrangements.
2. No stopping zone compliant with Roads and Maritime Services TDT 2002/12C.
3. 6 parking spaces removed.

Issue	REVISIONS		Drawn	Date
	Revisions/Descriptions			
001	CONCEPT PLANS		D.C	15.11.2016
002	CONCEPT PLANS		C.W	21.12.2016
003	CONCEPT PLANS		C.W	03.03.2017
004	CONCEPT PLANS		C.H	09.11.2017

Scale @ A3 0 2 4 6 8 10 12 1:250

Project	Design	Drawn	Checked
RAPID BUS ROUTE ASSESSMENT	D.C	C.H	C.H
CONCEPT ONLY			
Title	Project Number	Sheet Number	Issue
ROUTE N/A TSN NEW STOP & NEW STOP BITZIOS REF #69 & 70	P2092	117	004

Comments

- 1. Proposed parking restrictions are based on existing surrounding parking arrangements.
- 2. 4 parking spaces gained.

No. 63 FRANCIS GREENWAY DRIVE,
CHERRYBROOK

No. 65 FRANCIS GREENWAY DRIVE,
CHERRYBROOK

THORPE AVENUE



(#72) 212691

REMOVE
PLINTH

4 PARKING SPACES GAINED

CONSOLIDATE BUS STOP 212691

26m

FRANCIS GREENWAY DRIVE

24m

CONSOLIDATE BUS STOP 212678

4 PARKING SPACES GAINED

REMOVE
PLINTH

(#71) 212678

No. 100 FRANCIS GREENWAY DRIVE,
CHERRYBROOK

Comments

- 1. Proposed parking restrictions are based on existing surrounding parking arrangements.
- 2. 4 parking spaces gained.

Issue	REVISIONS		Drawn	Date
	Revisions/Descriptions			
001	CONCEPT PLANS		D.C	15.11.2016
002	CONCEPT PLANS		C.W	21.12.2016
003	NOT USED		-	-
004	CONCEPT PLANS		C.H	09.11.2017

Project RAPID BUS ROUTE ASSESSMENT	Design D.C	Drawn C.H	Checked T.W
	CONCEPT ONLY		
	Date 09.11.2017		
Title ROUTE 600, 620X, 621, 622, 626, M60 TSN 212678 & 212691 BITZIOS REF # 71 & 72	Project Number P2092	Sheet Number 118	Issue 004

Comments

- 1. Proposed parking restrictions are based on existing surrounding parking arrangements.
- 2. No parking spaces removed or gained.



No. 294 - 296 PENNANT HILLS ROAD,
THORNLEIGH

(#99) 2120165


REMOVE
PLINTH

NO PARKING SPACES GAINED OR REMOVED
REMOVE BUS STOP 2120165
16m

PENNANT HILLS ROAD

REVISIONS			
Issue	Revisions/Descriptions	Drawn	Date
001	CONCEPT PLANS	D.C	15.11.2016
002	NOT USED	-	-
003	NOT USED	-	-
004	CONCEPT PLANS	C.H	09.11.2017

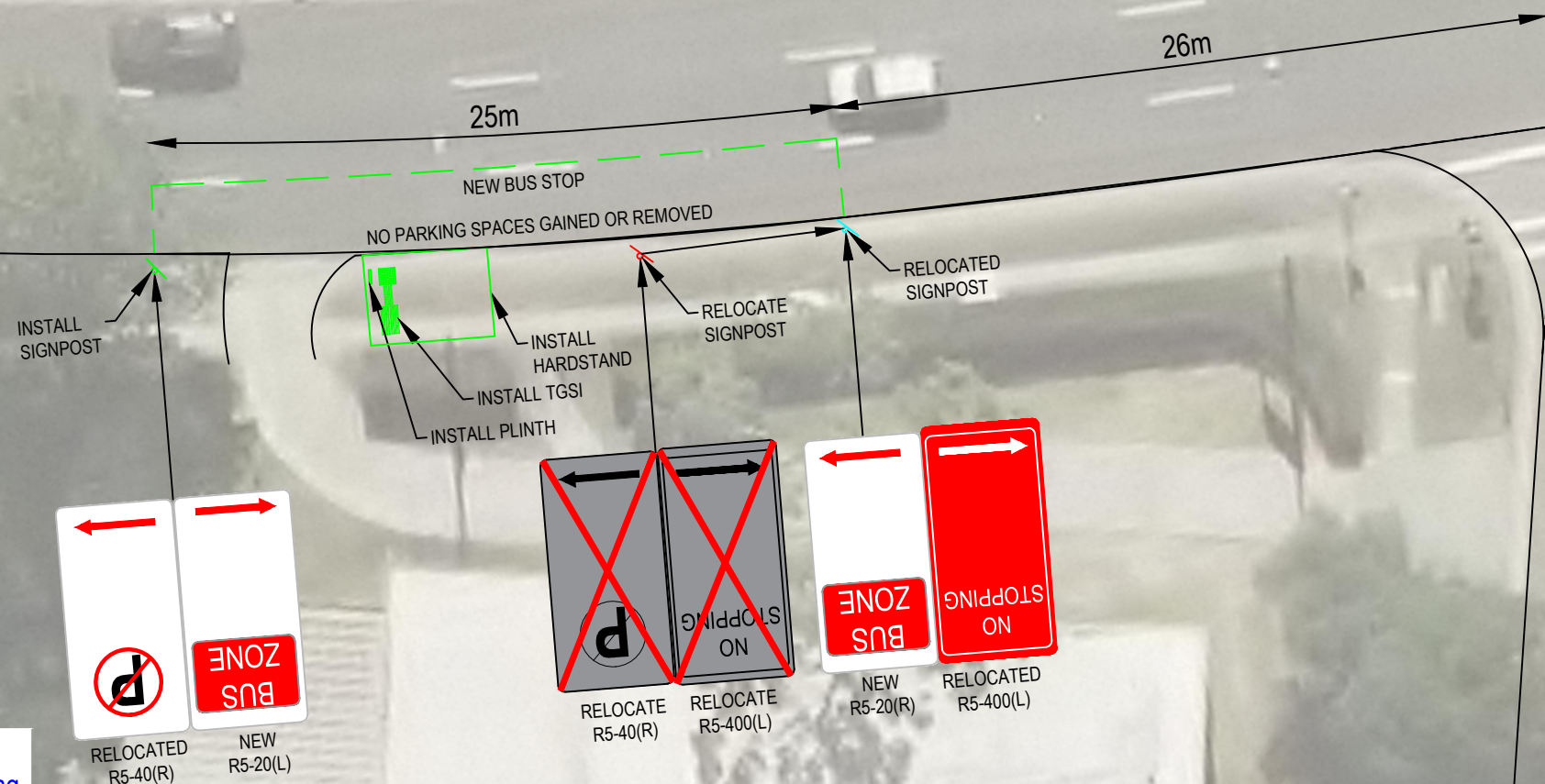
Scale @ A3



1:250

Design	Drawn	Checked
D.C	C.H	T.W
CONCEPT ONLY		
Date	09.11.2017	
Project Number	Sheet Number	Issue
P2092	119	004

PENNANT HILLS ROAD



(#102) NEW STOP

No. 235 PENNANT HILLS ROAD,
THORNLEIGH

Comments

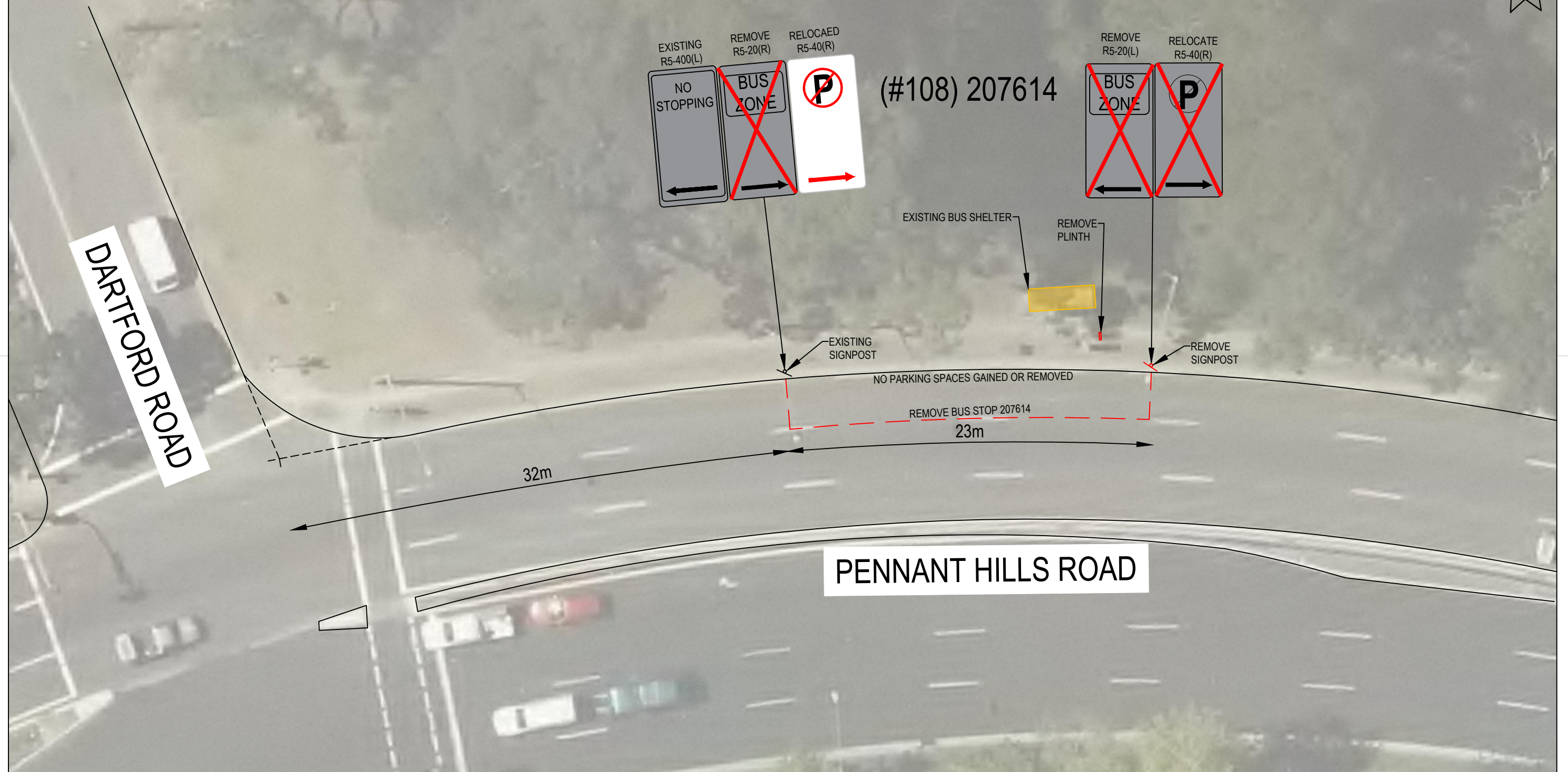

1. Proposed parking restrictions are based on existing surrounding parking arrangements.
2. No stopping zone compliant with *Roads and Maritime Services TDT 2002/12C*.
3. No parking spaces removed or gained.

REVISIONS			
Issue	Revisions/Descriptions	Drawn	Date
001	CONCEPT PLANS	D.C	15.11.2016
002	CONCEPT PLANS	C.W	21.12.2016
003	NOT USED	-	-
004	CONCEPT PLANS	C.H	09.11.2017

Scale @ A3
0 2 4 6 8 10 12
1:250

Project RAPID BUS ROUTE ASSESSMENT		Design D.C	Drawn C.H	Checked T.W
Title ROUTE N/A TSN NEW STOP BITZIOS REF #102		CONCEPT ONLY		
Project Number P2092		Sheet Number 120		Date 09.11.2017
				Issue 004

1. Proposed parking restrictions are based on existing surrounding parking arrangements.
2. No stopping zone compliant with *Roads and Maritime Services TDT 2002/12C*.
3. No parking spaces removed or gained.



BITZIOS
— consulting
traffic engineering ■ transport planning


Gold Coast
Suite 26, 58 Riverwalk Avenue, Robina QLD 4226.
P: (07) 5562-5377
W: www.bitiziosconsulting.com.au

Brisbane
Level 2, 428 Upper Edward Street, Spring Hill 4000.
P: (07) 3831-4442
E: admin@bitiziosconsulting.com.au

Sydney
Studio 203, 3 Gladstone Street, Newtown NSW 2042.
P: (02) 9557 6202

REVISIONS				
Issue	Revisions/Descriptions	Drawn	Date	
001	CONCEPT PLANS	D.C	15.11.2016	
002	CONCEPT PLANS	C.W	21.12.2016	
003	NOT USED	-	-	
004	CONCEPT PLANS	C.H	09.11.2017	
005	CONCEPT PLANS	C.H	15.11.2017	
006	CONCEPT PLANS	C.H	24.11.2017	

Scale @ A3



1:250

Project	RAPID BUS ROUTE ASSESSMENT
---------	----------------------------

Title	ROUTE 589, M60 TSN 207614 BITZIOS REF #108
-------	--

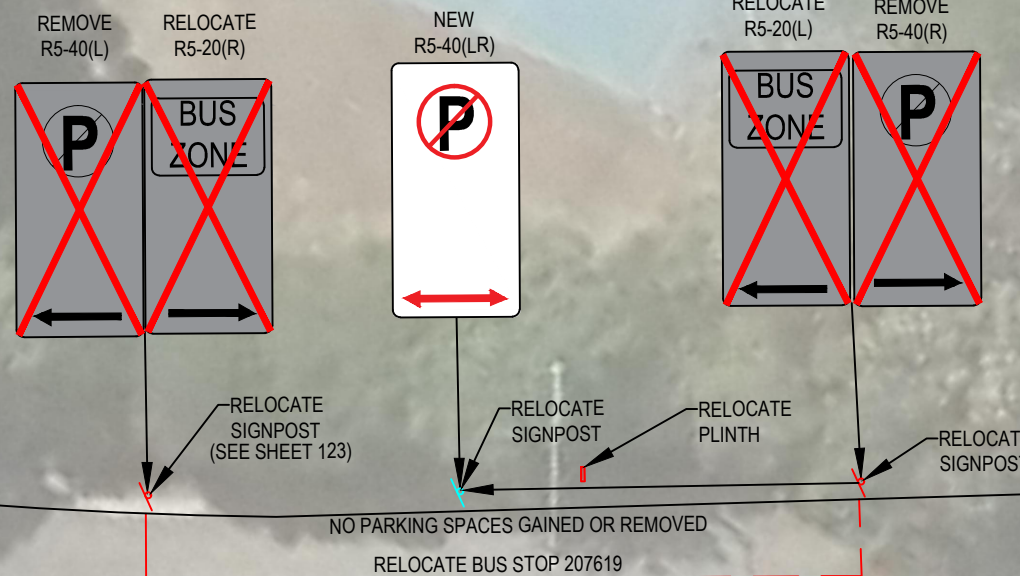
Design	Drawn	Checked
D.C	C.H	T.W
<div style="border: 2px solid red; padding: 5px; text-align: center;"> CONCEPT ONLY </div>		Date 24.11.2017
Project Number	Sheet Number	Issue
P2092	121	006

Comments

1. Proposed parking restrictions are based on existing surrounding parking arrangements.
2. No parking spaces removed or gained.

Normanhurst Public School
(#112) 207619

No. 96 PENNANT HILLS ROAD,
NORMANHURST



PENNANT HILLS ROAD

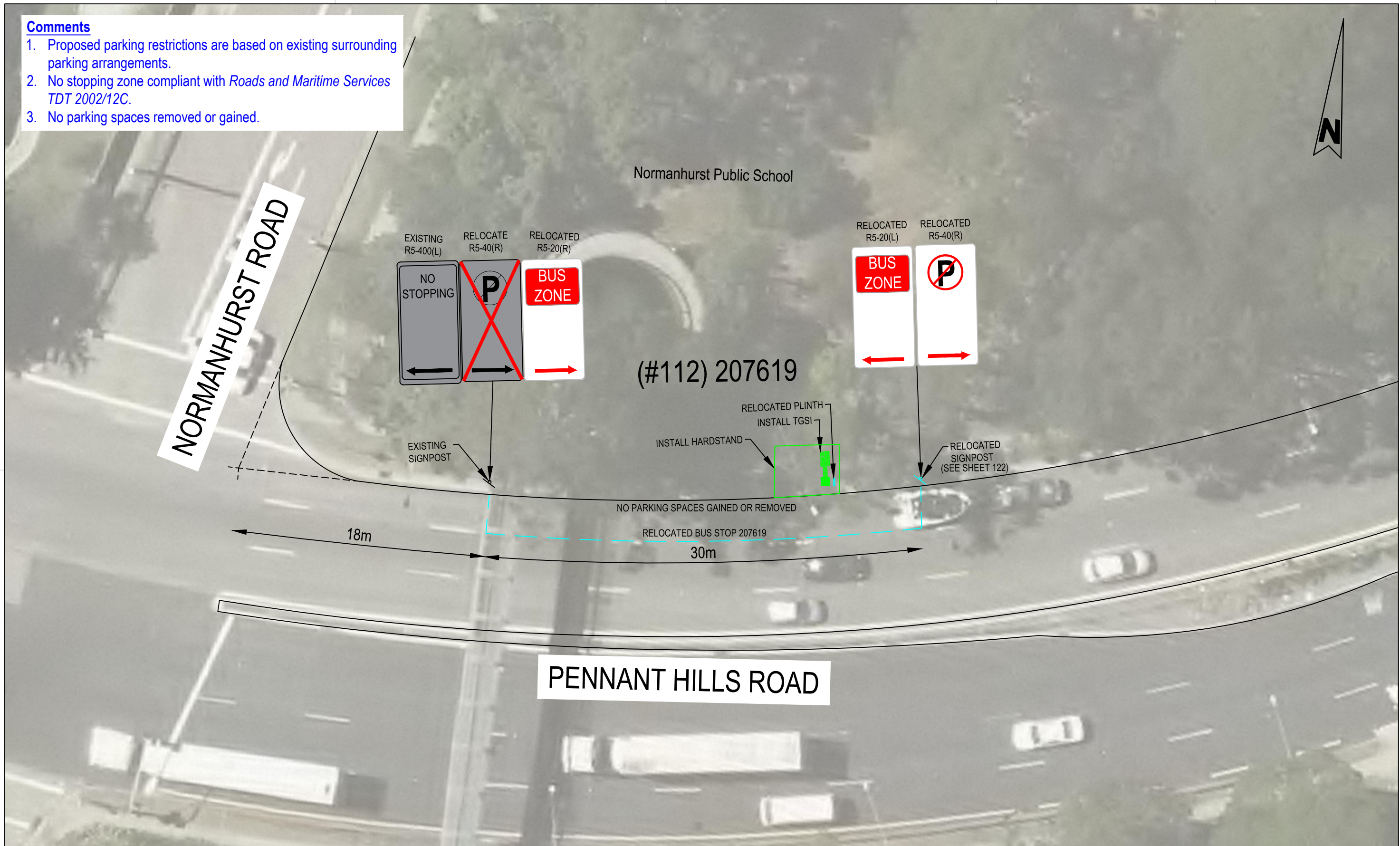
REVISIONS		Drawn	Date
Issue	Revisions/Descriptions		
001	CONCEPT PLANS	D.C	15.11.2016
002	CONCEPT PLANS	C.W	21.12.2016
003	NOT USED	-	-
004	CONCEPT PLANS	C.H	09.11.2017
005	CONCEPT PLANS	C.H	15.11.2017

Scale @ A3
0 2 4 6 8 10 12
1:250

Project RAPID BUS ROUTE ASSESSMENT		Design D.C	Drawn C.H	Checked T.W
Title ROUTE 589, M60 TSN 207619 BITZIOS REF #112		CONCEPT ONLY		
		Project Number P2092	Sheet Number 122	Date 15.11.2017 Issue 005

Comments

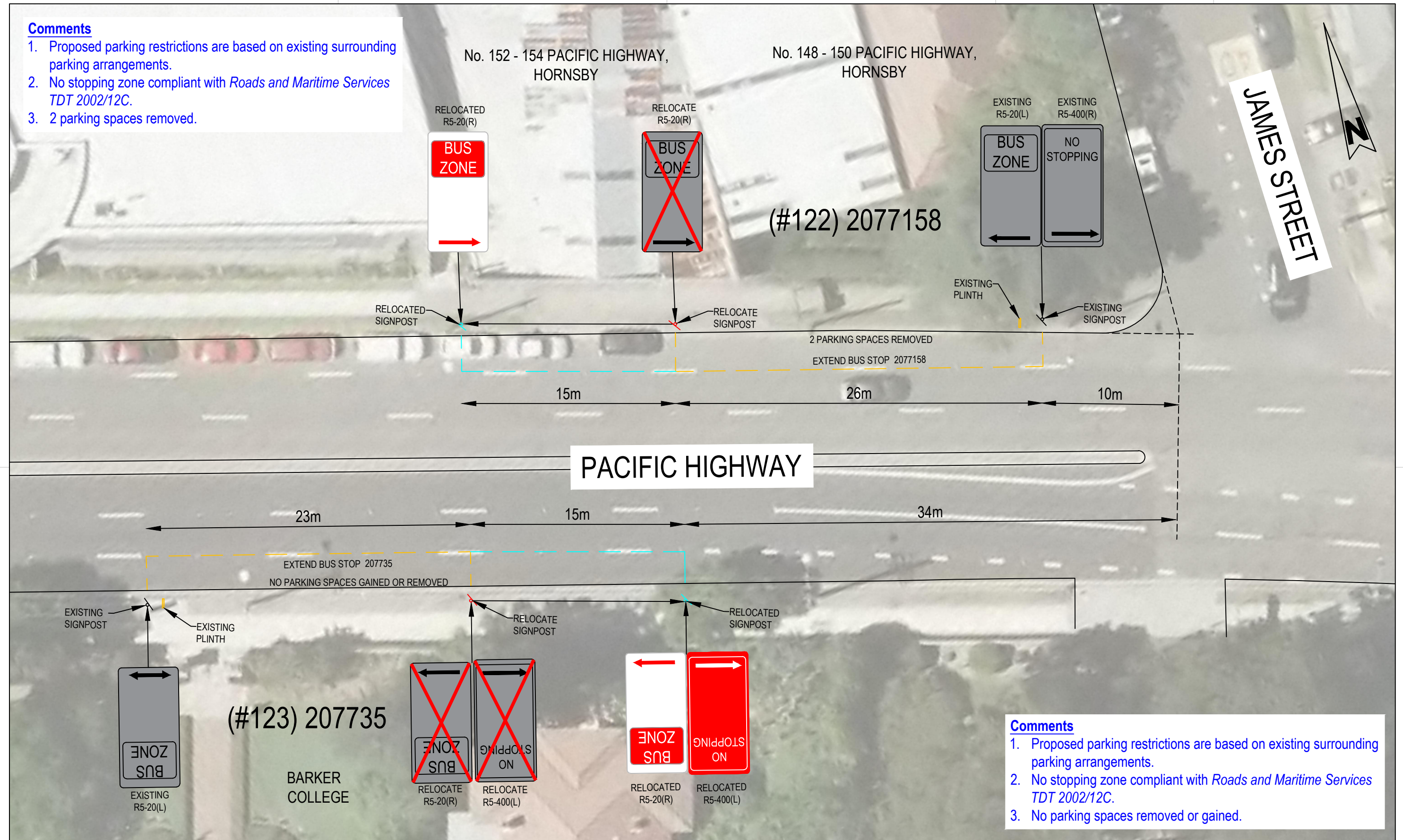
- 1. Proposed parking restrictions are based on existing surrounding parking arrangements.
- 2. No stopping zone compliant with Roads and Maritime Services TDT 2002/12C.
- 3. No parking spaces removed or gained.



<div><div>BITZIOS</div><div>consulting</div><div>traffic engineering ■ transport planning</div></div>	<div>Gold Coast</div> <div>Suite 26, 58 Riverwalk Avenue, Robina QLD 4226.</div> <div>P: (07) 5562-5377</div> <div>W: www.bitziosconsulting.com.au</div> <div>Brisbane</div> <div>Level 2, 428 Upper Edward Street, Spring Hill 4000.</div> <div>P: (07) 3831-4442</div> <div>E: admin@bitziosconsulting.com.au</div> <div>Sydney</div> <div>Studio 203, 3 Gladstone Street, Newtown NSW 2042.</div> <div>P: (02) 9557 6202</div>	REVISIONS		<div>Scale @ A3</div> <div><div>024681012</div><div>1:250</div></div>	Project		Design	Drawn	Checked		
		Issue	Revisions/Descriptions		Drawn	Date	RAPID BUS ROUTE ASSESSMENT		C.W	C.H	T.W
		001	CONCEPT PLANS		D.C	15.11.2016					
		002	CONCEPT PLANS		C.W	21.12.2016					
		003	CONCEPT PLANS		C.W	21.03.2017					
		004	CONCEPT PLANS		C.H	09.11.2017					
		005	CONCEPT PLANS		C.H	15.11.2017					
				Title		CONCEPT ONLY			Date		
				ROUTE 589, M60 TSN 207619 BITZIOS REF #112					15.11.2017		
						Project Number	Sheet Number	Issue			
						P2092	123	005			

Comments

1. Proposed parking restrictions are based on existing surrounding parking arrangements.
2. No stopping zone compliant with *Roads and Maritime Services TDT 2002/12C*.
3. 2 parking spaces removed.



Comments

1. Proposed parking restrictions are based on existing surrounding parking arrangements.
2. No stopping zone compliant with *Roads and Maritime Services TDT 2002/12C*.
3. No parking spaces removed or gained.

REVISIONS			
Issue	Revisions/Descriptions	Drawn	Date
001	CONCEPT PLANS	D.C	15.11.2016
002	CONCEPT PLANS	C.W	21.12.2016
003	NOT USED	-	-
004	CONCEPT PLANS	C.H	09.11.2017

Scale @ A3	0 2 4 6 8 10 12	1:250
------------	-----------------	-------

Project	Design	Drawn	Checked
RAPID BUS ROUTE ASSESSMENT	D.C	C.H	T.W
CONCEPT ONLY			
Title	Project Number	Sheet Number	Issue
ROUTE 587, 589, M60 TSN 2077158 & 207735 BITZIOS REF #122 & 123	P2092	124	004