

New and extended clearways on Cleveland Street

City Road, Camperdown to Anzac Parade, Moore Park

Project Update - January 2018

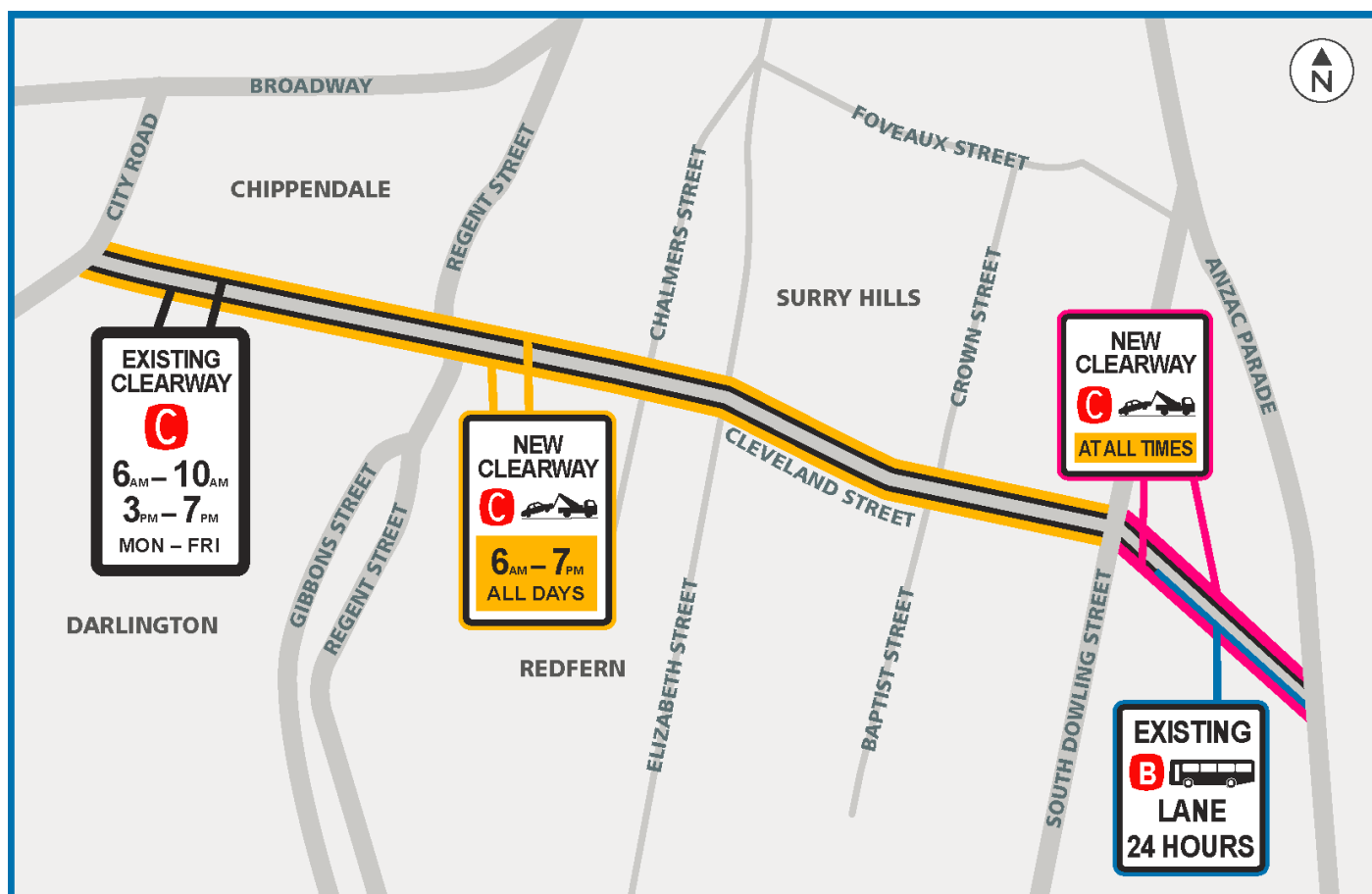
The NSW Government is funding this project as part of its \$121 million Clearways Program, which aims to reduce congestion and delays on Sydney's roads.

Roads and Maritime Services is installing new weekend and extended weekday clearways on Cleveland Street from City Road, Camperdown to Anzac Parade, Moore Park, to make it simpler for motorists. The new and extended clearways will operate from 6am to 7pm every day from City Road to South Dowling Street. From South Dowling Street to Anzac Parade clearways will operate at all times. The clearways hours are shown on the map below.

There will be no changes to existing parking restrictions outside the new clearway hours.

Changes to the clearways will be operational on Cleveland Street from **Monday 12 February 2018**. Any vehicles parked in the clearways on or after this date will risk being fined and towed.

Special event clearways will continue to operate along Cleveland Street as required.



What is a clearway?

A clearway is a section of road where stopping and parking is not allowed during the times shown on the clearway sign. Clearways are put on key arterial roads where traffic is often heavy and congested. They help keep vehicles moving by making all lanes available to motorists. The only exception is the stopping of buses and taxis dropping off or picking up passengers as well as emergency vehicles. If you park in a clearway during the clearway hours, you risk being fined and your vehicle can be towed.

What happens next?

The new clearways signs will be installed between **Monday 5 February** and **Sunday 11 February**. Our working hours will be between **8pm** and **5am** from Monday to Sunday.

During the installation work, there will be some temporary traffic changes to ensure the work zone is safe. Lane closures will be in place and may affect travel times. Please keep to speed limits and follow signs and traffic controllers' directions. For the latest traffic updates, you can call 132 701, visit livetraffic.com or download the Live Traffic NSW App.

As a resident or visitor, what does this mean for me?

The new weekend and extended weekday clearways will change the ability to pick up and drop off in front of residential and business properties along Cleveland Street during clearway hours. We understand this may cause you some inconvenience.

If you have a business or currently live on this section of Cleveland Street, you will need to reconsider where you pick up and drop off. If you do not have a driveway, garage or carport on your property, local streets are available for you to park subject to council restrictions.

How will the work affect you?

There will be some noise associated with this work but we will do everything we can to minimise its impact, including completing the noisier tasks by **11pm**.

Business customer parking

Currently on-street business customer parking is limited to a few sections of Cleveland Street and is only available between 7pm and 6am on weekdays and 6.30pm and 6.30am on weekends.

When the new clearway is operational, parking in these sections will be available between 7pm and 6am every day. This should make it easier for everyone to understand.

Contact us

If you have any questions or would like more on the Cleveland Street changes please contact our project team:



1300 706 232



clearways@rms.nsw.gov.au



rms.nsw.gov.au/clearways



If you need help understanding this information, please contact the Translating and Interpreting Service on 131 450 and ask them to call us on 1300 706 232.