



Australian Government



**BUILDING OUR FUTURE**

# Community Update

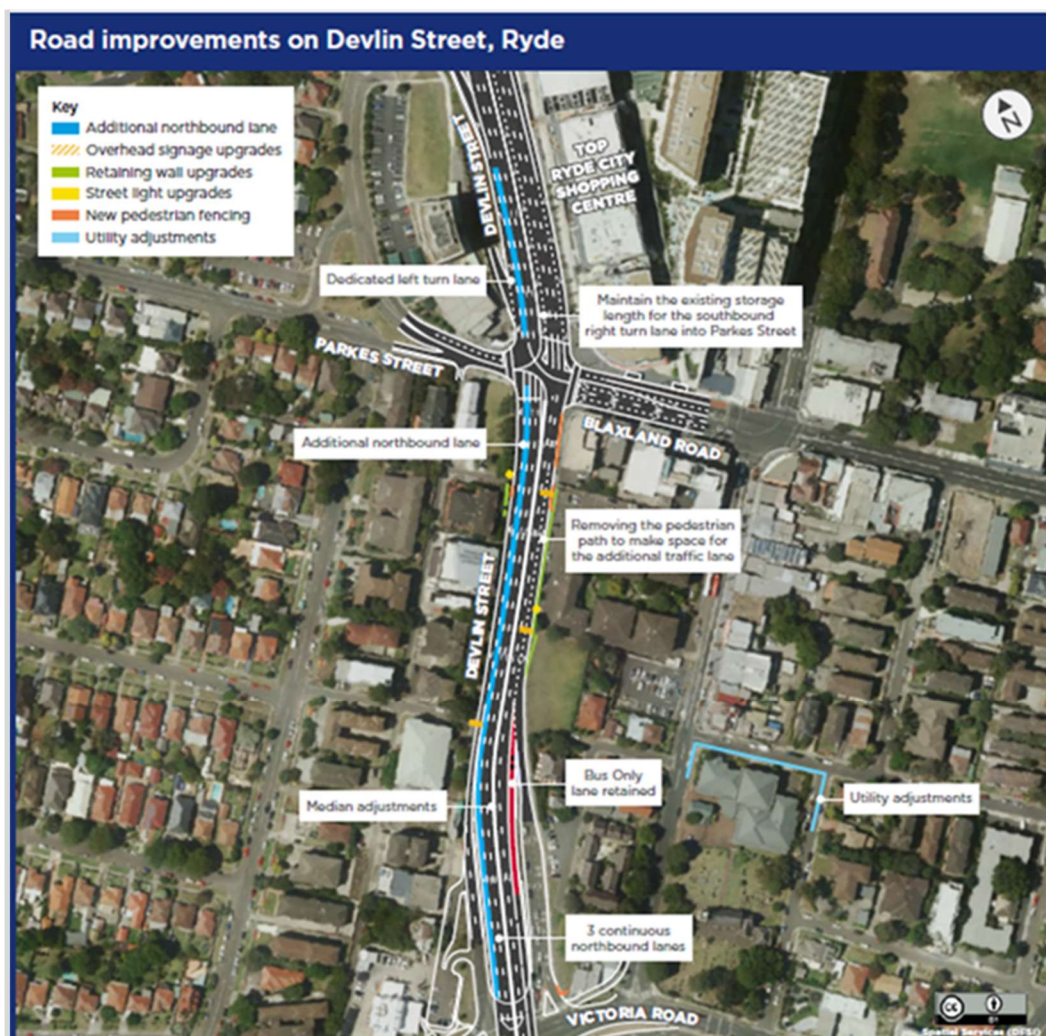
Transport for NSW | May 2022

## Devlin Street improvements










The Australian and NSW Governments are taking action to improve Sydney's road network.

Transport for NSW is finalising the addition of a fourth northbound lane on Devlin Street, Ryde between Victoria Road and Blaxland Road to:

- improve traffic flow and travel times through the Devlin Street, Blaxland Road and Parkes Street intersection
- reduce congestion, queuing and delays for northbound traffic on Devlin Street, especially during peak periods
- enhance safety for pedestrians and road users.



## Making Ryde a better place to live, work and play

Upgraded Infrastructure	Benefit for the Community
 New fourth northbound lane on Devlin St	Better traffic flow on the road network
 Three new retaining walls	Improved safety for properties & vehicles along Devlin St with the enhanced structural integrity of the walls
 Landscaping behind new retaining walls & replanting	Transport is collaborating with the City of Ryde to replant & enhance urban greening
 Two new light pole upgrades	Improved night visibility & safety for road & footpath users
 Footpath upgrades & pedestrian fencing	Increased pedestrian connectivity & safety
 Stormwater & drainage upgrades	Improved management of rainwater on the road & safety for motorists
 New & upgraded overhead gantry signs	Providing enhanced wayfinding for drivers
 New asphalt road surface	Improved driving experience with a safe & smooth road surface
 Focus on Environmental sustainability	Recycled 4160 tonnes of concrete, asphalt & earth materials since Oct 2021 while improving road network

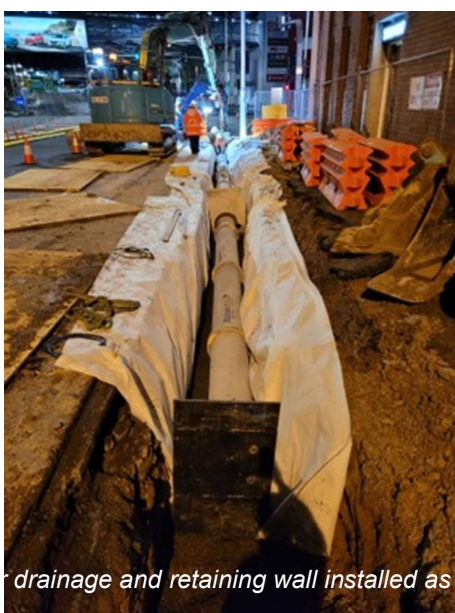
## Finishing work

Between **Sunday 8 May** and **Thursday 30 June**, we will work for up to **10 day** and **20 night** shifts along Devlin Street to complete the project and will:

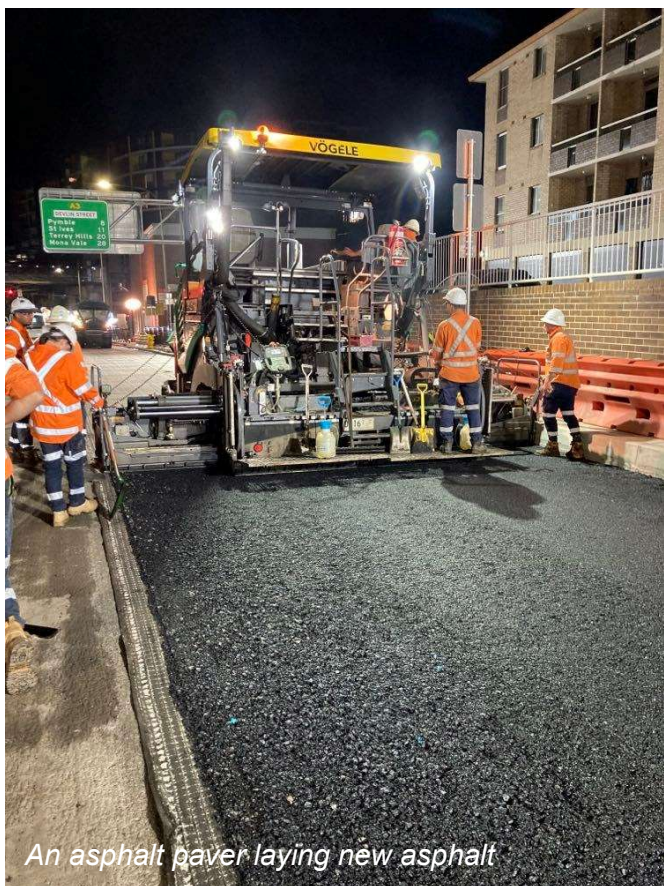
- finish the new road surface linemarking on the southbound lanes, south of the Blaxland Road intersection
- apply the red bus lane surface coating
- install an overhead gantry sign

- adjust the traffic light phasing at the Devlin Street, Blaxland Road and Parkes Street intersection
- finish other minor works across the project
- demobilise from the compound yard at 166a Epping Road, North Ryde.

We will work up to **five nights** and **five days** each week.



New overhead gantry sign, stormwater drainage and retaining wall installed as part of the Devlin Street improvements



*An asphalt paver laying new asphalt*



**Did you know?** Asphalt is a sustainable, reusable material.

The asphalt laid along Devlin Street contains up to 10% recycled glass and up to 30% recycled asphalt!

You may have seen an asphalt paver at work on Devlin Street. The large machine consumes asphalt and lays it in uniform compacted layers. Our teams use an asphalt paver to ensure the layers have no bumps and provide good rideability for vehicles.

At the moment, the new road surface looks a little unfinished and has no linemarking. The final linemarking uses a hot thermoplastic that reacts with the freshly laid asphalt. We need to wait a week after asphaltting to install the linemarking so that it does not turn yellow, and maintains its reflective white colour.

## Thank you, keep in touch

Thank you to local residents and businesses for your patience while we completed the Devlin Street improvements.

We will continue to provide details and the timing of construction activities on our website at [nswroads.work/devlinst](https://nswroads.work/devlinst) which we update monthly, until we complete work in June 2022.

We will continue to be contactable as we complete the final work activities.

If you have any questions or would like more information, please contact the Devlin Street project team



1800 923 330



[DevlinStUpgrade@christiecivil.com.au](mailto:DevlinStUpgrade@christiecivil.com.au)



[nswroads.work/devlinst](https://nswroads.work/devlinst)

## Traffic light phasing

On **Saturday night 14 May** we will adjust the traffic light phasing at the Devlin Street, Blaxland Road and Parkes Street intersection.

Phasing is when various users at an intersection receive a green signal. The new phasing will ensure a safe and efficient traffic flow through the intersection with the additional Devlin Street northbound traffic lane.

In the event of wet weather, we will complete the work on the following Saturday night, 21 May..

## Stimulus funding

The Devlin Street improvements and Lane Cove Road and Buffalo Road safety improvements are part of an investment by the Australian and NSW Governments to deliver congestions-busting and road safety projects across NSW.

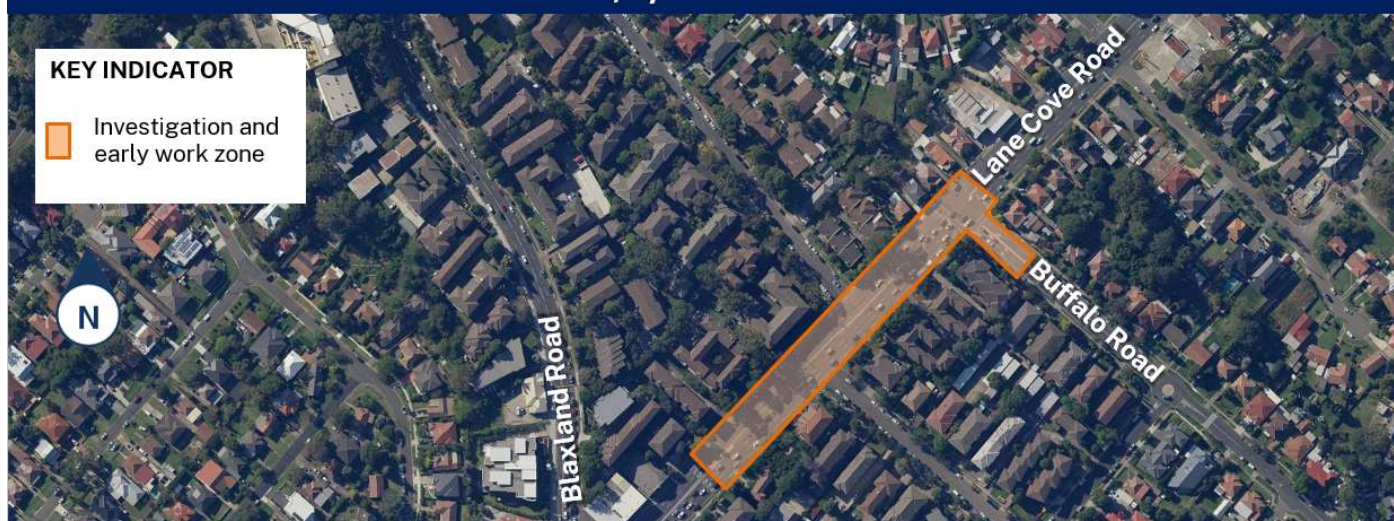
# Lane Cove Road safety improvements

Transport for NSW plan to improve road safety and extend the right turn bay from Lane Cove Road into Buffalo Road, Ryde. The extended bay will reduce the risk of rear-end crashes and improve safety for road users at the intersection.

For 20 night shifts between **Sunday 8 May** and **Thursday 30 June 2022** we will:

- pothole to find underground services, survey and investigate ground conditions
- undertake pavement upgrades on Lane Cove Road
- install new road signage.

## Lane Cove Road and Buffalo Road intersection, Ryde



## How will the work affect you?

We know our night work can disturb road users and residents as it may be noisy at times.

Thank you for your support and patience while we will do everything we can to lessen the disruption including completing the noisier activities by midnight.

There will be temporary traffic changes along the work zone during our work hours to ensure the work zone is safe. For the latest traffic updates, you can call **132 701**, visit [livetraffic.com](https://www.livetraffic.com) or download the **Live Traffic NSW App**

## Contact us

If you have any questions or would like more information, please contact the Lane Cove Road safety improvements team

 **1800 317 377**

 [networksafety@transport.nsw.gov.au](mailto:networksafety@transport.nsw.gov.au)

## Our work hours

There will be no work on public holidays. Our day work hours will be between **7am** and **6pm** from Monday to Friday. Our night work hours will be between **8pm** and **5am** from Sunday to Friday.



If you need help understanding this information, please contact the Translating and Interpreting Service on **131 450** and ask them to call us on **1800 923 330**.