

Building a better Dubbo 2019 Community Consultation Report

New Dubbo Bridge – Review of Environmental Factors
and concept design display

**Newell Highway and Mitchell Highway intersection
upgrade** – design display

**Mitchell Highway (Cobra Street) and Fitzroy Street
intersection upgrade** – design display

Transport for NSW | February 2020

Contents

Executive Summary	3
--------------------------	----------

1. Introduction	4
1.1 Background	4
1.2 New Dubbo Bridge	5
1.3 Newell Highway and Mitchell Highway intersection upgrade	8
1.4 Mitchell Highway (Cobra Street) and Fitzroy Street intersection upgrade	10

2. Consultation approach	12
2.1 Consultation objectives	12
2.2 Consultation method	12
2.3 Communications and consultation activities	13

3. Consultation summary	16
3.1 Overview	16
3.2 Key project issues	18
3.3 Summary of submissions and responses	19
3.4 Recommendations	36

4. Next steps	38
----------------------	-----------

Appendices	40
Appendix A – Community Update	40
Appendix B – Postcard	46
Appendix C – Postcard distribution area	47
Appendix D – Newspaper advertisement in Dubbo Photo News	48
Appendix E – Newspaper advertisement in Dubbo Daily Liberal	49
Appendix F – Digital advertisement	50
Appendix G – Radio advertisement	50
Appendix H – Media release	51
Appendix I – Media Release	52
Appendix J – Feedback form	53
Appendix K – Feedback form	54
Appendix L – Posters	55
Appendix M – Facebook posts	60

Tables	
Table 1. Summary of communications and consultation activities	13
Table 2. Breakdown of attendees at information sessions and stakeholder briefings	16
Table 3. Summary of comments and feedback for the Newell Highway and Mitchell Highway intersection upgrade	19
Table 4. Summary of comments and feedback for Mitchell Highway (Cobra Street) and Fitzroy Street intersection upgrade	31



An artist's impression of the New Dubbo Bridge.

Executive Summary

Transport for NSW is delivering five major road infrastructure projects in Dubbo to improve road safety, reduce travel times and ease congestion. These projects are being delivered alongside each other through an integrated program called Building a better Dubbo.

This Community Consultation Report is a summary of the community and stakeholder consultation carried out by Transport for NSW between May and June 2019 during the combined display of three of the projects within the Building a better Dubbo program. Consultation focused on the concept design and Review of Environmental Factors (REF) for the New Dubbo Bridge, and the designs for the Newell Highway and Mitchell Highway intersection upgrade and the Mitchell Highway (Cobra Street) and Fitzroy Street intersection upgrade.

Transport for NSW invited community and stakeholder submissions for the New Dubbo Bridge REF and concept design and sought community and stakeholder feedback on the designs of the two intersection upgrades.

During the combined display period between Monday 27 May and Friday 28 June 2019, Transport for NSW received a total of 439 responses from the community and stakeholders. Of this total, the New Dubbo Bridge project received 310 submissions, the Newell Highway and Mitchell Highway intersection upgrade received 107 responses, and the Mitchell Highway (Cobra Street) and Fitzroy Street intersection upgrade received 22 responses.

Key issues raised by the community and stakeholders about the New Dubbo Bridge project include:

- Requests to change the planned location of the new bridge from River Street to Troy Bridge Road
- Impact on Aboriginal heritage at Wiradjuri Park
- The project design does not adequately address the issue of trucks travelling through Dubbo CBD.

Key issues raised by the community and stakeholders about the Newell Highway and Mitchell Highway intersection upgrade include:

- Concerns around the closure of the right turn into and out of Baird Street
- Impacts of parking changes on local businesses on Victoria Street
- Positive feedback about the roundabout being replaced with traffic lights
- Development and growth in West Dubbo.

Key issues raised by the community and stakeholders about the Mitchell Highway (Cobra Street) and Fitzroy Street intersection upgrade include:

- Positive feedback about the roundabout being replaced with traffic lights
- Loss/removal of trees around the intersection
- Traffic efficiency through the intersection.

In determining the REF for the New Dubbo Bridge, Transport for NSW committed to responding to each submission and has prepared a Submissions Report summarising the key issues.

Transport for NSW also committed to considering feedback to the Newell Highway and Mitchell Highway intersection upgrade, and the Mitchell Highway (Cobra Street) and Fitzroy Street intersection upgrades.

1. Introduction

Between Monday 27 May and Friday 28 June 2019, Transport for NSW carried out a combined display for three projects that are part of the Building a better Dubbo program. On display during this time were:

- The concept design and Review of Environmental Factors (REF) for the New Dubbo Bridge
- The design plan for the Newell Highway and Mitchell Highway intersection upgrade
- The design plan for the Mitchell Highway (Cobra Street) and Fitzroy Street intersection upgrade.

The community and stakeholders were invited to provide feedback to help inform the designs and planning for each of the projects.

Updates on the progress of the LH Ford Bridge strengthening and the Newell Highway upgrade, West Dubbo projects were also provided as part of the communications during this period.

1.1 Background

The NSW Government is investing \$195 million in five road projects across Dubbo. These projects are being delivered through an integrated program called Building a better Dubbo and will help to improve road safety, ease congestion and reduce travel time in Dubbo providing also for the traffic that passes through Dubbo. The five projects are:

- New Dubbo Bridge
- Newell Highway and Mitchell Highway intersection upgrade
- Mitchell Highway (Cobra Street) and Fitzroy Street intersection upgrade
- LH Ford Bridge strengthening
- Newell Highway upgrade, West Dubbo.

Further information about these projects can be found on the Transport for NSW project website at nswroads.work/dubbo

Figure 1. Map of five road projects in Dubbo



1.2 New Dubbo Bridge

The NSW Government is investing \$140 million to fund the construction of a new bridge over the Macquarie River in Dubbo.

The preferred option at River Street was chosen to improve freight efficiency on the Newell Highway, reduce traffic congestion and provide an additional route during flood events. It will assist in easing congestion in Dubbo when needed most.

Transport for NSW prepared a Review of Environmental Factors (REF) for the project and feedback was invited as part of the May to June 2019 consultation period. The REF is an environmental assessment document that examines the potential social and environmental impacts of the project and identifies ways to mitigate these impacts. The New Dubbo Bridge REF can be viewed on the project website nswroads.work/dubbo.

1. Introduction continued

Consultation to date

Transport for NSW investigated six strategic options and carried out an extensive community consultation program based on these options between April and May 2016.

The six options were shortlisted to three, following community feedback and a value management workshop with representatives from Dubbo Regional Council, business and community groups, and other government agencies.

In June 2017, the preferred option at River Street was announced after consideration and assessment of traffic impacts, environmental issues and community feedback. During this time, potentially affected properties were consulted directly.

Since then, Transport for NSW has continued to engage with the community and key stakeholders, particularly property owners along the proposed corridor as well as Dubbo Regional Council and the Aboriginal community.

Potentially impacted property owners were contacted by the project team in June 2017 and have been consulted with directly since then. Transport for NSW has been sensitive to the various concerns and issues raised during these targeted consultation meetings and remains committed to keeping potentially impacted property owners informed throughout the development of the project.

Prior to the public display of the New Dubbo Bridge REF and concept design, Transport for NSW met with all impacted property owners separately to discuss the design and anticipated level of impact to individual properties. The meetings were organised over the phone, and delivered in person. Representatives from the Transport for NSW Environment, Project Management, Property Acquisition and Communications and Stakeholder Engagement teams were present to discuss the project and provide technical advice to stakeholders.

Transport for NSW is committed to remaining transparent and being upfront about the progress of the project. These targeted property owner meetings were an opportunity to speak openly about the likely impacts of the project to each property owner. The meetings were an opportunity for property and business owners to voice their concerns, ask questions, provide feedback and seek understanding about the project's elements likely to affect them most.

Project benefits

The preferred option for a new river crossing in Dubbo will:

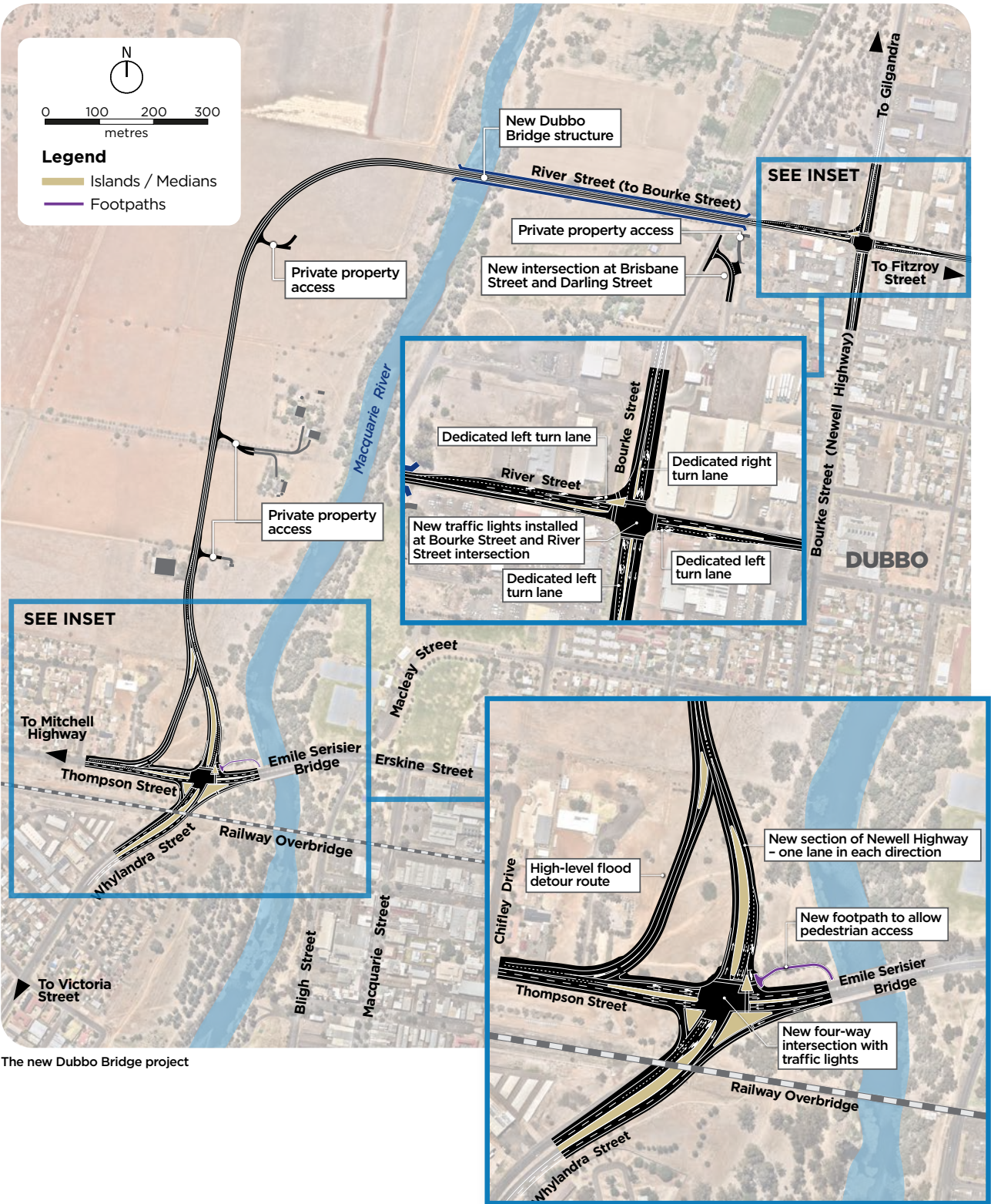
- Improve traffic flow during a flood
- Improve traffic flow in Dubbo and reduce average traffic delays
- Improve local freight and heavy vehicle traffic access across the river
- Provide access and plan for future growth in north-west Dubbo
- Provide a new four-way intersection at Thompson Street, Whylandra Street and the Newell Highway
- Improve the efficiency of the Newell Highway during flood events for traffic travelling through Dubbo.

Project features

The New Dubbo Bridge includes:

- A 545 metre bridge connecting the western shore of the Macquarie River to River Street, travelling west of the river
- New and upgraded intersections at Thompson Street, Whylandra Street and the Newell Highway
- Realignment of the Newell Highway with new separated lanes north of Whylandra Street
- Upgrade of the intersection at Bourke Street and River Street.

Figure 2. Concept design of New Dubbo Bridge



The new Dubbo Bridge project

1. Introduction continued

1.3 Newell Highway and Mitchell Highway intersection upgrade

The NSW Government is investing \$20 million to upgrade the Newell Highway and Mitchell Highway intersection in Dubbo. As part of the upgrade, the roundabout will be removed and replaced with traffic lights to better regulate traffic flow and to help improve road safety and efficiency.

The Newell Highway and Mitchell Highway are part of the National Land Transport Network. This network is essential to linking businesses and industries through road and rail infrastructure which connects major cities and regions. The Newell and Mitchell highways are a vital part of the road network through Dubbo and the surrounding region.

Transport for NSW has completed a detailed design of the project which was put on display for public feedback as part of the May to June 2019 consultation period.

Transport for NSW understands the potential impact to the road network that will come from this project. In response to stakeholder feedback, Transport for NSW reviewed its traffic modelling and examined other potential options for traffic movements around the upgraded intersection. Transport for NSW has changed the design, retaining the right turn into Baird Street in both directions from the Newell Highway. The proposal includes installing traffic lights on all four legs of the intersection of Baird Street and the Newell Highway.

Consultation to date

During early development of the project, Transport for NSW consulted with businesses and residents on each leg of the roundabout and advised that the project was being developed.

In late 2018, the project team met with stakeholders and businesses to discuss potential property impacts including potential changes to parking.

Once a more detailed design of the upgrade was complete, the project team met with stakeholders in early 2019 to confirm property impacts and to discuss next steps. These meetings are continuing.

Prior to the May to June 2019 consultation period, the project team consulted with businesses on each leg of the roundabout, regardless of whether they were impacted or not.

Project benefits

The Newell Highway and Mitchell Highway intersection upgrade will:

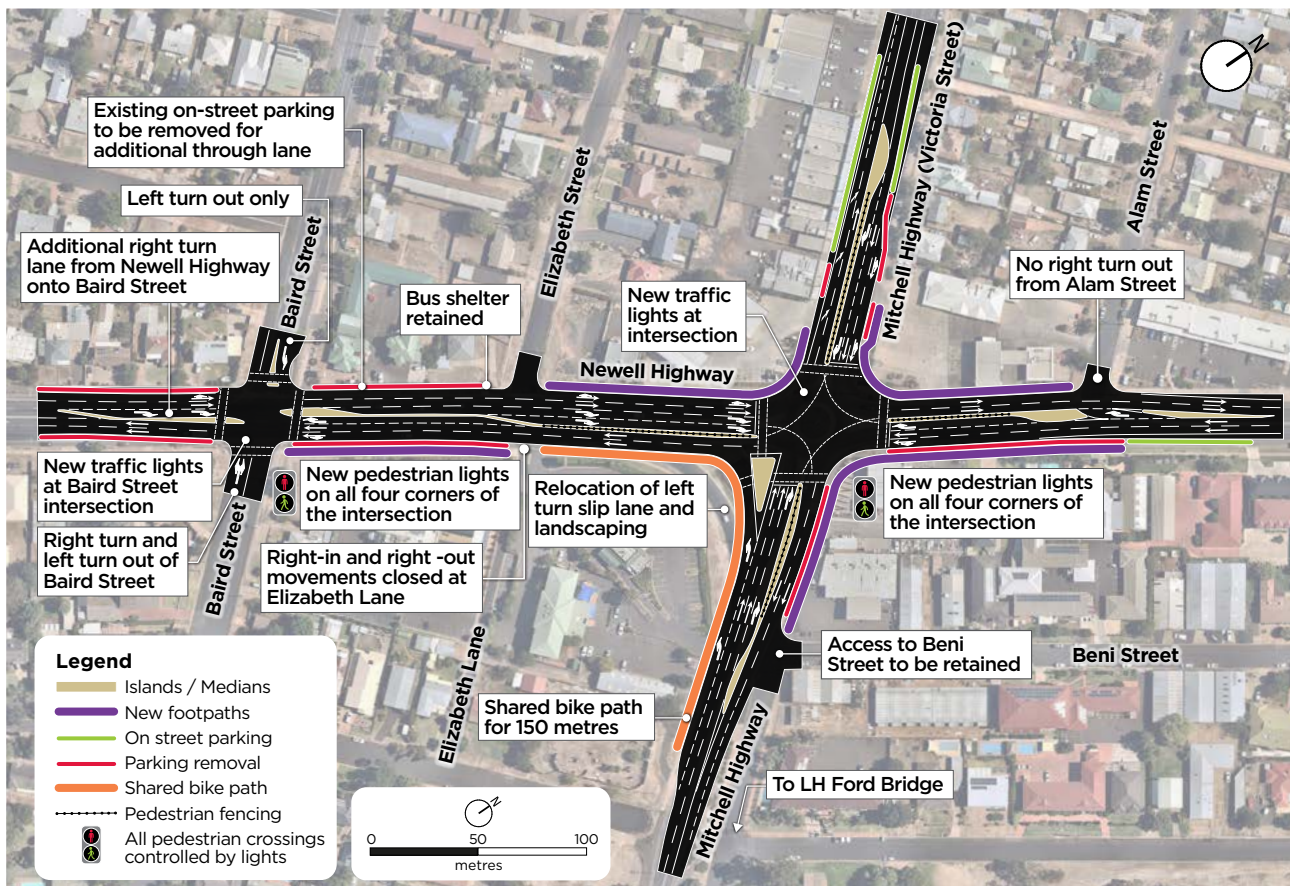
- Provide a highway intersection that allows safe and efficient movement of heavy vehicles up to 36.5m to the north, south and west
- Reduce congestion and travel times
- Improve safety by reducing conflict between local and through traffic and between vehicles and pedestrians and cyclists.

Project features

The Newell Highway and Mitchell Highway intersection upgrade includes the following features:

- Traffic lights will replace the existing roundabout
- Traffic lights at the Baird Street and Newell Highway intersection
- New pedestrian crossings on all four sides of the intersection, with foot ramps to improve wheelchair and pram access
- Intersection widening to allow for increasing traffic volumes
- Additional merge lane that minimises parking loss at Victoria Street shops
- Relocation of underground utilities and overhead power
- Safer turn paths for road trains (up to 36.5m long)
- New stormwater system to improve drainage in a high rainfall event.

Figure 3. Concept design of the Newell Highway and Mitchell Highway intersection upgrade



1. Introduction continued

1.4 Mitchell Highway (Cobra Street) and Fitzroy Street intersection upgrade

The NSW Government is investing \$14 million to upgrade the Mitchell Highway (Cobra Street) and Fitzroy Street intersection.

As part of the upgrade, the roundabout will be removed and replaced with traffic lights to reduce congestion for highway and local traffic, particularly during peak hours.

Transport for NSW has completed a detailed design of the project which was put on display for public feedback as part of the May to June 2019 consultation period.

Project benefits

The Mitchell Highway (Cobra Street) and Fitzroy Street intersection upgrade will:

- Improve motorist, pedestrian and cyclist safety at the intersection
- Improve traffic efficiency by better regulating traffic flow to accommodate increasing traffic volumes
- Reduce congestion for highway and local traffic, particularly during peak hours
- Improve street lighting at the intersection.

Project features

The Mitchell Highway (Cobra Street) and Fitzroy Street intersection upgrade includes the following features:

- Traffic lights will replace the existing roundabout
- New pedestrian crossings on all four sides of the intersection, with foot ramps to improve wheelchair and pram access
- Widened intersection to improve traffic flow
- Relocating some underground service utilities and overhead power
- Improvements to street lighting
- Improvements to road quality.

Figure 4. Concept design of Mitchell Highway (Cobra Street) and Fitzroy Street intersection upgrade



2. Consultation approach

2.1 Consultation objectives

The purpose of the community consultation undertaken in May and June 2019 was to:

- Provide an update on the Building a better Dubbo program to the community and stakeholders
- Build relationships and a database of interested and concerned community members with whom Transport for NSW will continue to engage with throughout the development and delivery of Building a better Dubbo
- Inform community members and stakeholders about the environmental assessment and concept design for the New Dubbo Bridge project
- Provide the community with an opportunity to have its say on the New Dubbo Bridge REF and concept design
- Provide the community with more detailed information and the opportunity to have its say about the designs for the Newell Highway and Mitchell Highway intersection upgrade, and the Mitchell Highway (Cobra Street) and Fitzroy Street intersection upgrade
- Provide the community with an update on the progress of the LH Ford Bridge strengthening project and the Newell Highway upgrade at West Dubbo
- Provide the community with an opportunity to meet with the Transport for NSW project teams
- Inform the community about the next steps in each project.

2.2 Consultation method

A number of activities were carried out in the lead-up to, and during the 33-day display period to inform the community and stakeholders about what was happening and to encourage their involvement in the consultation process. These activities provided the community with a range of opportunities to learn more about the projects, meet the project team and have its say. A detailed summary of communication and consultation activities is provided in Table 1. Further analysis of the outcomes of consultation is detailed in Section 3.

During the display period, information was provided at eight staffed community information sessions in Dubbo, at five unstaffed display locations around Dubbo as well as during stakeholder briefings and meetings with business and property owners, transport operators and interest groups.

Transport for NSW interacted with about 1000 people during the 33-day display period and 310 formal submissions to the New Dubbo Bridge REF and concept design were received by the project team.

Stakeholders and community members were encouraged to provide feedback, leave comments, and make submissions in person to the project team or via email, mail or phone. The community was able to contact Transport for NSW on the details below:



1800 803 818



dubboprojects@rms.nsw.gov.au



PO Box 36, Dubbo NSW 2830



nswroads.work/dubbo

These details were provided on all project communications.

Note the email and website address has since changed. Emails to this address are still being received and all visitors to the project web page are diverted to the new site.

2.3 Communications and consultation activities

Table 1. is a summary of the communications and consultation activities carried out across the Building a better Dubbo combined display and consultation period in May to June 2019.

Table 1. Summary of communications and consultation activities

Tool/Activity	Description
Community Update (Appendix A)	<p>A six-page community update was prepared introducing the overall Building a better Dubbo program and inviting the community to have its say on three road infrastructure projects. Detailed information, including graphic maps and project features, was provided about each project. The community update outlined the activities undertaken during the consultation period and provided instruction on how to provide feedback and make a submission to the project team.</p> <p>Hard copies of the community update were available at the shopfront, at all information sessions and unstaffed displays at Dubbo Regional Council, Western Plains Cultural Centre, Dubbo Visitor Information Centre, TAFE Western Dubbo College, Macquarie Regional Library; soft copies were available via download from the project websites.</p>
Postcard (Appendix B)	<p>A double-sided postcard was produced and distributed on the first day of the consultation period. A total of 20,031 postcards were distributed to letterboxes in Dubbo (2830), Wongarbron (2831) and Geurie (2818). See Appendix C for a map showing the postcard distribution area.</p> <p>The postcard introduced the overall Building a better Dubbo campaign and invited the community to have its say on three road infrastructure projects. Information about how to provide feedback and make submissions and details of the community information sessions were also provided.</p> <p>Hard copies of the postcard were also available at the Building a better Dubbo shopfront on Macquarie Street and at all information sessions.</p>
Newspaper advertisement (Appendix D and Appendix E)	<p>Quarter-page advertisements about the combined display and consultation period were placed in the front section of two local newspapers for distribution across multiple editions, which equalled a total of eight advertisements. The advertisements included information about the combined display and consultation period, and featured a schematic map of the five Dubbo road projects.</p> <p>Advertisements in the Dubbo Daily Liberal appeared on 27 May, and 5, 12, and 18 June 2019.</p> <p>Advertisements in the Dubbo Photo News appeared on 30 May, 6, 13 and 20 June 2019.</p>
Digital advertisement (Appendix F)	<p>Two different advertisements were placed on the Dubbo Daily Liberal website to inform readers of the combined display and consultation period. Together, the advertisements received around 1000 clicks through to the Building a better Dubbo project website.</p>
Radio advertisement (Appendix G)	<p>Radio advertising was conducted within the consultation period from Monday 27 May to Saturday 22 June 2019, across three local radio stations. The purpose of the advertisement was to inform the community about the combined display and consultation period, and to direct the community to the project website for more information about how to make a submission or provide feedback.</p> <p>A total of 300 commercials were broadcast on 2DU and Zoo FM and a total of 64 commercials were broadcast on Dubbo Hit 93.5. The commercials were spread across the breakfast, morning, afternoon and evening drive periods to reach a wide audience.</p>
Project website nswroads.work/dubbo	<p>The Transport for NSW website was used to provide information about the project, including a download-friendly version of the community update, feedback form, Frequently Asked Questions (FAQs), poster, digital flythrough, 2019 New Dubbo Bridge Review of Environmental Factors, May 2017 New Dubbo Bridge Preferred Option Report and May 2016 New Dubbo Bridge Options Report.</p>

2. Consultation approach continued

Tool/Activity	Description
Media release (Appendix H)	A media release was prepared and distributed via the project website and local media. The media release provided information to the community about the combined display and consultation period, and directed the community to the project website for more information on the projects and how to make a submission or provide feedback.
Doorknocking	<p>Transport for NSW ensured that all affected property owners near the River Street project were contacted and face-to-face meetings were held before the public display began.</p> <p>In relation to the Newell Highway and Mitchell Highway intersection upgrade, before the start of the public display, a media release was issued and a stakeholder letter was distributed that provided a project update and explained how the community could provide feedback on the projects. Individual meetings were also held with impacted property owners.</p>
Facebook	Facebook was used to disseminate information about the New Dubbo Bridge and the combined display, using project page updates, as well as advertising. This information was targeted to Facebook users in the Dubbo area, and those who may have been travelling to Dubbo during the campaign period. A total of 2937 users viewed the video post. The static (single image) post received 2185 click-throughs to the project website. A carousel (multiple image) post received 960 click-throughs to the project website. The advertisements generated interest in the community and received a total of 184 comments.
Email to stakeholders	A Building a better Dubbo campaign email was sent to all registered stakeholders through the project's Consultation Manager and Campaign Monitor accounts. The email was issued on Monday 27 May 2019 and successfully reached approximately 77 recipients who had subscribed to updates at that time. The number of registered stakeholders increased during the display period due to greater awareness and people subscribing for updates.
Posters (Appendix I)	Five A3 posters were produced detailing the projects of the Building a better Dubbo program. The posters were used at the information sessions, shopfront and unstaffed displays at Dubbo Regional Council, Western Plains Cultural Centre, Dubbo Visitor Information Centre, TAFE Western Dubbo College and Macquarie Regional Library.
FAQs	Frequently Asked Questions (FAQs) were prepared for all five projects and included information relating to project status and timeline, potential impacts and mitigation measures, as well as design features. The FAQ documents were available in hard copy at the information sessions and unstaffed display locations and as a soft copy via download from their respective project websites.
Online survey	Feedback forms for the three projects on public display were accessible via the Transport for NSW website. Feedback was generated in real time and sent directly to Transport for NSW, providing online feedback opportunities to all stakeholders.
Visualisations/videos/fly-through	<p>Fly-through animations of each project design were produced and uploaded to the project websites, social media, and NSW Roads' YouTube profile. The animations were also played on loop at the shopfront during information sessions and when the shopfront was closed.</p> <p>The New Dubbo Bridge fly-through animation can be viewed on the NSW Government YouTube page here</p> <p>The Newell Highway and Mitchell Highway intersection upgrade fly-through animation can be viewed on the NSW Government YouTube page here</p> <p>The Mitchell Highway (Cobra Street) and Fitzroy Street intersection upgrade fly-through animation can be viewed on the NSW Government YouTube page here</p>
Stakeholder briefings	<p>Industry briefing – including representatives from the Dubbo Chamber of Commerce, emergency services and transport operators.</p> <p>Dubbo Regional Council representatives were briefed separately, including Council's General Manager.</p> <p>Consultation with key stakeholders, including affected residents and business owners, was undertaken in the week before the public display.</p>

Tool/Activity	Description
Shopfront	<p>The project team temporarily occupied a display space at 2/163 Macquarie Street, Dubbo for the duration of the consultation period. This space served as the primary location for information sessions and was filled with communication material, including copies of the community update, postcard, posters, fly-through animations and feedback forms.</p> <p>As the shopfront was in a central location of Dubbo, it received a high number of visits from community members and stakeholders at a time convenient for them. They were able to meet and talk with the projects' technical experts and communications staff for several hours at a time, and provide submissions and feedback immediately at the shopfront.</p>
Unstaffed displays	<p>Hard copies of the New Dubbo Bridge REF and supporting documentation were on display at five locations in Dubbo. These unstaffed displays also featured information about the overall Building a better Dubbo program, including designs of the Newell Highway and Mitchell Highway intersection upgrade and Mitchell Highway (Cobra Street) and Fitzroy Street intersection upgrade. Static displays were established at the following locations:</p> <ul style="list-style-type: none"> • Macquarie Regional Library – Corner Macquarie Street and Talbragar Street, Dubbo • Dubbo Regional Council – Corner Church and Darling Street, Dubbo • Western Plains Cultural Centre – 76 Wingewarra Street, Dubbo • Dubbo Visitor Information Centre – Corner Macquarie Street and Newell Highway, Dubbo • TAFE Western Dubbo College – Myall Street Campus, Dubbo.
Information sessions	<p>Several information sessions were held at various locations in Dubbo for the community to view the project documentation and meet with Transport for NSW project staff. These information sessions included:</p> <p>Building a Better Dubbo Shopfront – 2/3163 Macquarie Street, Dubbo</p> <ul style="list-style-type: none"> • Tuesday 28 May 2019, 9am – 3pm • Thursday 30 May 2019, 12pm – 6pm • Wednesday 5 June 2019, 9am – 3pm • Thursday 13 June 2019, 9am – 3pm • Wednesday 19 June 2019, 11am – 5pm • Wednesday 26 June 2019, 9am – 3pm <p>Dubbo Farmer's Market – Corner Macquarie Street and Newell Highway, Dubbo</p> <ul style="list-style-type: none"> • Saturday 1 June 2019, 8am – 12pm <p>Orana Mall (in front of Big W) – Windsor Parade, Dubbo</p> <ul style="list-style-type: none"> • Thursday 6 June 2019, 4pm – 7pm

3. Consultation summary

3.1 Overview

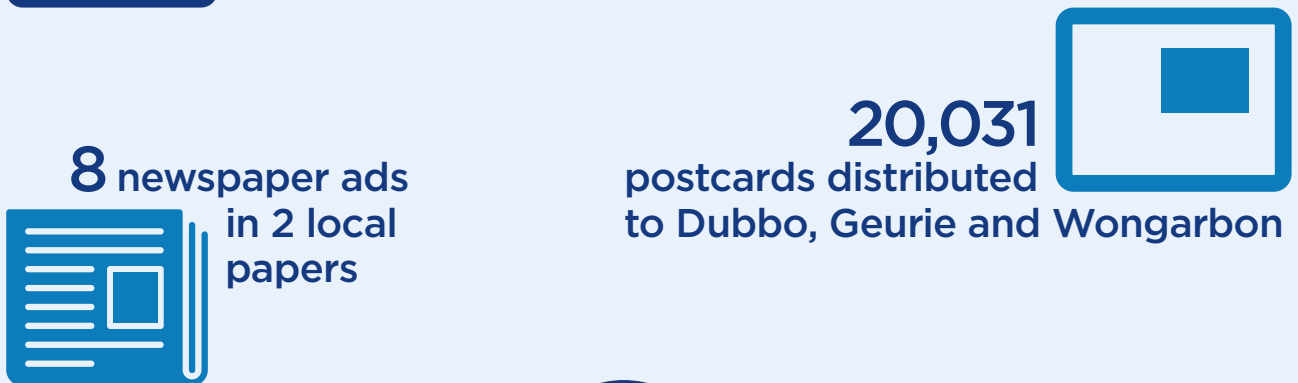
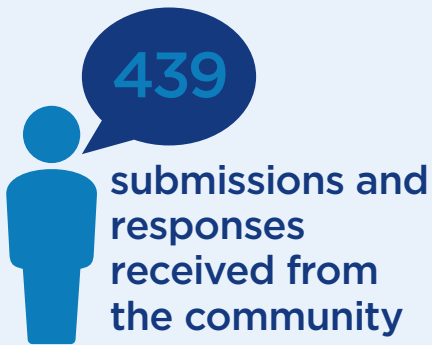
Transport for NSW received a total of **439** responses across the consultation period. Of this total number, **310** submissions were to the New Dubbo Bridge project, **107** responses were to the Newell Highway and Mitchell Highway intersection upgrade project, and **22** responses were to the Mitchell Highway (Cobra Street) and Fitzroy Street intersection upgrade project.

Submissions and responses were provided by a range of stakeholder groups including council, individual community members, business and property owners, transport operators and interest groups.

Across the information sessions, the project team engaged with about 1000 attendees. A breakdown of this total is provided in Table 2.

Table 2. Breakdown of attendees at information sessions and stakeholder briefings

Information session	Date and time	Approx. number of attendees
Building a better Dubbo Shopfront	Tuesday 28 May 2019, 9am – 3pm	161
Building a better Dubbo Shopfront	Thursday 30 May 2019, 12pm – 6pm	209
Dubbo Farmer's Market	Saturday 1 June 2019, 8am – 12pm	190
Building a better Dubbo Shopfront	Wednesday 5 June 2019, 9am – 3pm	147
Orana Mall (in front of Big W)	Thursday 6 June 2019, 4pm – 7pm	84
Building a better Dubbo Shopfront	Thursday 13 June 2019, 9am – 3pm	75
Building a better Dubbo Shopfront	Wednesday 19 June 2019, 11am – 5pm	34
Building a better Dubbo Shopfront	Wednesday 26 June 2019, 9am – 3pm	42
Stakeholder briefings	Industry briefing; Dubbo Regional Council representatives briefing; targeted consultation with key stakeholders (including affected residents and business owners)	65
		TOTAL 1007



3. Consultation summary continued

3.2 Key project issues

New Dubbo Bridge

Issues identified through the submissions to the New Dubbo Bridge project were:

- Requests to change the planned location of the new bridge from River Street to Troy Bridge Road
- Impact on Aboriginal heritage at Wiradjuri Park
- The project design does not adequately address the issue of trucks travelling through the Dubbo CBD
- The project design does not adequately address the area's flood issues.

A summary of the suggestions, issues and concerns raised in submissions to the New Dubbo Bridge project and Transport for NSW's responses to these is provided in the New Dubbo Bridge Submissions Report.

Newell Highway and Mitchell Highway intersection upgrade

Issues identified through submissions to the Newell Highway and Mitchell Highway intersection upgrade project were:

- Concerns around the closure of the right turn into and out of Baird Street from the Newell Highway (Whylandra Street)
- Impacts of parking changes on local businesses on the Mitchell Highway (Victoria Street)
- Impacts of access changes on local businesses on the Newell Highway
- Positive feedback about the roundabout being replaced with traffic lights
- Development and growth in West Dubbo.

A summary of the suggestions, issues and concerns raised in submissions to the Newell Highway and Mitchell Highway intersection upgrade and Transport for NSW's responses to these is provided in Table 4 in Section 3.2.

Mitchell Highway (Cobra Street) and Fitzroy Street intersection upgrade

Issues identified through the submissions to the Mitchell Highway (Cobra Street) and Fitzroy Street intersection upgrade project were:

- Removal of trees around the intersection
- Planting replacement trees to offset vegetation loss
- Traffic efficiency through the intersection.

A summary of the suggestions, issues and concerns raised in submissions to the Mitchell Highway (Cobra Street) and Fitzroy Street intersection upgrade and Transport for NSW's responses to these is provided in Table 5 in Section 3.2.

3.3 Summary of submissions and responses

Table 3. Summary of comments and feedback for the Newell Highway and Mitchell Highway intersection upgrade

Issue Category	Sub-issue Category	Number of submissions that raised this issue	Issues raised	Transport for NSW response
Opposition to project	Impacts to businesses	30	<p>Impacts to a range of businesses including: Urban Village Shopping Centre, Subway, Lucky 7, The Westside Hotel, Hungry Jacks, Ted's Burger Bar, Westside Pub.</p> <p>The project will impact vehicle access to the Westside Hotel which will have a negative financial impact on the business.</p> <p>The median strip will isolate businesses and impact their profit to the point of involuntary closure. Request to implement a right turn into the Westside Hotel when travelling west.</p>	<p>The Transport for NSW project team liaised with residents and business owners near the intersection of the Newell Highway and Mitchell Highway in 2018 and throughout 2019.</p> <p>This included business owners that would potentially be impacted by changes to Baird Street, businesses at 33-43 Whylandra Street (Urban Village), properties impacted by access changes, Victoria Street businesses, as well as residents and businesses on each side of the intersection.</p> <p>Transport for NSW liaised with business and property owners of the shops at 33-43 Whylandra Street about early investigation work in the area. Between 27 May and 28 June 2019, Transport for NSW undertook a public display for five projects included in the NSW Government's \$195 million Building a better Dubbo infrastructure program.</p> <p>Before the start of the public display, a media release was issued and a stakeholder letter was distributed that provided a project update and explained how the community could provide feedback on the projects. Individual meetings were also held with impacted property owners.</p> <p>Transport for NSW is aware of concerns and associated impacts from restricting the right turn out of Alam Street onto the Newell Highway. The no right-hand turn from Alam Street is necessary to improve safety. A short alternative route is available by turning right out of the southern driveway of the businesses at 33-43 Whylandra Street and travelling along Alam Street, turning left onto Young Street and then onto the Mitchell Highway to travel south.</p> <p>Transport for NSW engaged with the broader community, commuters and business owners about the proposed changes to Baird Street. In response to stakeholder feedback, Transport for NSW reviewed its traffic modelling and examined other potential options for traffic movements around the upgraded intersection. Transport for NSW has changed the design to retain the right turn into and out of Baird Street in both directions from the Newell Highway. The proposal includes installing traffic lights on all four legs of the intersection of Baird Street and the Newell Highway.</p> <p>The change to the design will maintain access to the businesses on the south-western side of the intersection, as well as the properties in Stonehaven Avenue.</p> <p>More information about the traffic light design was made available to the community in November 2019 and is available on the project website.</p>

3. Consultation summary continued

Issue Category	Sub-issue Category	Number of submissions that raised this issue	Issues raised	Transport for NSW response
Opposition to project	Impacts to Aboriginal heritage	1	The project would intersect sacred trees and land.	<p>Information about Aboriginal heritage is outlined in the April 2019 Review of Environmental Factors (REF), which is available on the project website here. The REF notes that the project site is located in an area that has been subject to extensive ground disturbance associated with the construction of roads, utilities, commercial and residential premises. The REF study area did not contain any landscape features that indicated the likely existence of Aboriginal objects and no Aboriginal sites were previously recorded within the study area.</p> <p>The REF noted the proposal was unlikely to result in harm to Aboriginal objects during construction.</p>
Opposition to project	Request for bypass	8	<p>A bypass of Dubbo will solve current and future issues.</p> <p>A bypass of Dubbo will improve safety by removing large vehicles from passing through the town.</p> <p>A bypass of Dubbo will preserve existing roads and lower maintenance costs.</p>	<p>In relation to the New Dubbo Bridge, Transport for NSW prepared a Review of Environmental Factors (REF) to assess the potential environmental impacts of the proposal. A Submissions Report has been prepared, which summarises the main issues raised by the community and responses to those issues. The New Dubbo Bridge Submissions Report is available on the project website.</p> <p>Studies show more than 90 per cent of motorists want to visit rather than travel past Dubbo, meaning an outer ring road option would only benefit 10 per cent of motorists. A ring road would also not solve east-west access to schools, the airport and emergency services during flooding.</p> <p>The River Street design out-performed the other six options in terms of providing improved local traffic flow in Dubbo, improved local freight and heavy vehicle traffic access across the river and for future growth in north-west Dubbo. It also will ensure the least impact to local property.</p> <p>There is no evidence or data to support the idea that upgrading Troy Bridge would be a better option than a bridge at River Street. There would be significantly more impacts to property in a busier part of Dubbo. It would not improve local flooding. East-west congestion would still remain an issue.</p> <p>In relation to a Dubbo ring road, this would be the responsibility of Dubbo Regional Council to progress when there is a plan for Dubbo's expansion and for Council to seek NSW Government support for planning and delivery.</p>
Opposition to project	Parking	5	Loss of parking along Victoria Street will impact liveability of the area and cause businesses to close.	The parking in front of the Victoria Street shops is being retained with the exception of two spaces closest to the intersection. This was an amendment to the project after valuable feedback from the local community.

Issue Category	Sub-issue Category	Number of submissions that raised this issue	Issues raised	Transport for NSW response
Opposition to project	Opposition to Baird Street changes	43	<p>Installation of median strip will impact emergency services' accessibility to the area.</p> <p>Changes to Baird Street will increase traffic on East Street, Bent Street, North Street and adjacent school zones.</p> <p>Changes to Baird Street will impact access to Whylandra Street from St Andrews Drive.</p>	<p>Transport for NSW engaged with the broader community, commuters and business owners about the proposed changes to Baird Street. In response to stakeholder feedback, Transport for NSW reviewed its traffic modelling and examined other potential options for traffic movements around the upgraded intersection. Transport for NSW has changed the design, retaining the right turn into Baird Street in both directions from the Newell Highway. The proposal includes installing traffic lights on all four legs of the intersection of Baird Street and the Newell Highway.</p> <p>The change to the design will maintain access to the businesses on the south-western side of the intersection, as well as the properties in Stonehaven Avenue.</p> <p>This change will maintain the current traffic movements and will not impact on the amount of traffic travelling on East Street, Bent Street, North Street and the adjacent school zones.</p> <p>More information about the traffic light design was made available to the community in November 2019 and is available on the project website.</p>
Opposition to project	Opposition to Alam Street changes	4	Right turn out of Alam Street will compound traffic issues caused by a previous change affecting southbound traffic turning right into Urban Village Shopping Centre.	Transport for NSW is aware of concerns and associated impacts from restricting the right turn out of Alam Street onto the Newell Highway. Transport for NSW is implementing the right-hand turn ban from Alam Street to improve safety. A short alternative route is available by turning right out of the southern driveway of the businesses at 33-43 Whylandra Street and travelling along Alam Street, turning left onto Young Street and then onto the Mitchell Highway to travel south.
Opposition to project	Opposition to Elizabeth Lane changes	1	No right hand turn into Elizabeth Lane will cause extra build up into school zones.	Transport for NSW has changed the design, retaining the right turn into Baird Street in both directions from the Newell Highway. The proposal includes installing traffic lights and pedestrian crossings on all four legs of the intersection of Baird Street and the Newell Highway.

3. Consultation summary continued

Issue Category	Sub-issue Category	Number of submissions that raised this issue	Issues raised	Transport for NSW response
Opposition to project	Opposition to Stonehaven Avenue changes	9	<p>Request to open up Stonehaven Avenue dead end to allow local traffic to exit onto the Mitchell Highway.</p> <p>Concerns that residents of Stonehaven Avenue will lose access to Newell Highway due to proposed median strip.</p>	<p>Transport for NSW engaged with the broader community, commuters and business owners about the proposed changes to Baird Street. In response to stakeholder feedback, Transport for NSW reviewed its traffic modelling and examined other potential options for traffic movements around the upgraded intersection. Transport for NSW has changed the design, retaining the right turn into Baird Street in both directions from the Newell Highway. The proposal includes installing traffic lights on all four legs of the intersection of Baird Street and the Newell Highway.</p> <p>The change to the design will maintain access to the businesses on the south-western side of the intersection, as well as the properties in Stonehaven Avenue.</p> <p>More information about the traffic light design was made available to the community in November 2019 and is available on the project website.</p> <p>Transport for NSW does not have plans to open up Stonehaven Avenue to allow access to the Newell Highway. The new traffic lights at Baird Street will provide access to the Newell Highway for Stonehaven Avenue residents.</p>
Opposition to project	Opposition to East Street changes	5	Changes to Baird Street will result in additional traffic on East Street in the vicinity of schools.	<p>Transport for NSW has changed the design to retain the right turn into and out of Baird Street in both directions from the Newell Highway. The proposal includes installing traffic lights on all four legs of the intersection of Baird Street and the Newell Highway.</p> <p>This modification will maintain the current traffic movements and will not change the amount of traffic travelling past Dubbo West Public and St Pius X Primary School.</p>
Opposition to project	Inadequate community consultation	2	<p>No targeted consultation since August 2018.</p> <p>No genuine consultation.</p>	<p>Transport for NSW implemented an extensive program of engagement for the Building a better Dubbo projects, including a number of activities that were carried out in the lead up to, and during the 33-day display period. These activities were designed to inform the community and stakeholders about what was happening and to encourage their involvement in the consultation process. These activities provided the community with a range of opportunities to learn more about the projects, meet the project team and have its say.</p> <p>During the display period, information was provided at eight staffed community information sessions in Dubbo, at five unstaffed display locations around Dubbo as well as during targeted stakeholder briefings and meetings with business and property owners, transport operators and interest groups. Transport for NSW implemented an extensive program of targeted consultation, including letters to property owners, meetings with owners, follow-up meetings during the display and the project team making themselves available at times that suited property owners.</p>

Issue Category	Sub-issue Category	Number of submissions that raised this issue	Issues raised	Transport for NSW response
Opposition to project	Traffic lights will slow traffic movements in peak morning rush	1	Lights at the intersection of Whylandra Street and East Street need to be better sequenced to ensure the new traffic lights can manage traffic flow together with the existing traffic lights.	The installation of traffic lights at the Newell Highway and Mitchell Highway intersection will require changes to the phasing of traffic lights in Dubbo. The new traffic lights at the Baird Street intersection will also require changes to the sequencing of traffic lights in other parts of Dubbo. Transport for NSW will examine the broader road network and make changes to traffic light phasing and sequencing to maximise traffic flow for motorists in Dubbo.
Opposition to project	Other impacts	1	<p>Concerns over noise impacts.</p> <p>Request that works only be undertaken during business hours to minimise impact to motel business.</p> <p>Concerns over impacts to building infrastructure integrity.</p>	<p>Where possible, construction would be undertaken during recommended standard hours. Construction will also take place outside standard working hours. Work will be scheduled at night when traffic numbers are lower, in order to minimise impacts on road users.</p> <p>Work will be scheduled to minimise impacts to motorists as well as nearby residents and businesses.</p> <p>Transport for NSW will consult nearby residents and businesses before scheduled night work to keep them informed of work activities. We will also implement strategies to mitigate construction impacts. This would include scheduling noisier activities earlier in the night, having respite periods during noisy activity, using screens to dampen noise and turning off machinery when it is not in use.</p> <p>Night work would be completed in accordance with the Interim Construction Noise Guideline and the Transport for NSW's Environmental Noise Management Manual.</p> <p>A construction noise and vibration management plan will be prepared as part of the Construction Environmental Management Plan. Impacted residents and businesses will be contacted individually about vibration impacts and assessments that will be carried out prior to the start of construction.</p>
Opposition to project	Financial compensation	1	Property value and potential rent will drop as a result of the project. Compensation will be sought.	<p>Transport for NSW recognises that upgrades to the road network cause changes to businesses and residents nearby. Transport for NSW has policies in place to manage the process for properties that need to be acquired as part of these road network changes. However, Transport for NSW's acquisition policy does not provide compensation to residents or businesses that are near road projects or infrastructure upgrades.</p> <p>Transport for NSW will work with nearby residents and business owners to minimise the impacts of the work required for these upgrades.</p>

3. Consultation summary continued

Issue Category	Sub-issue Category	Number of submissions that raised this issue	Issues raised	Transport for NSW response
Support for project	Positive sentiment	16	Support for the project and the changes it will make throughout Dubbo.	Transport for NSW notes the positive feedback about the project.
Support for project	Support project but oppose Baird Street changes	6	<p>Changes to Baird Street will impact businesses and job opportunities, particularly at the Westside Hotel.</p> <p>Changes to Baird Street will impact residents and their ability to park, move around the area and access their homes.</p> <p>Changes to Baird Street will increase traffic through Stonehaven Avenue and other adjacent streets.</p>	<p>Transport for NSW engaged with the broader community, commuters and business owners about the proposed changes to Baird Street. In response to stakeholder feedback, Transport for NSW reviewed its traffic modelling and examined other potential options for traffic movements around the upgraded intersection. Transport for NSW has changed the design, retaining the right turn into Baird Street in both directions from the Newell Highway. The proposal includes installing traffic lights on all four legs of the intersection of Baird Street and the Newell Highway.</p> <p>The change to the design will maintain access to the businesses on the south-western side of the intersection, as well as the properties in Stonehaven Avenue.</p> <p>More information about the traffic light design was made available to the community in November 2019 and is available on the project website.</p>
Support for project	Support traffic lights but oppose merging to one lane either side of intersection	1	<p>Support for the removal of roundabout.</p> <p>Concerns with merge into one lane after the roundabout.</p> <p>Request to make Mitchell Highway two lanes in each direction.</p>	<p>Transport for NSW notes the positive feedback about the installation of traffic lights at the intersection. In relation to traffic merging on each side of the intersection, the turning lanes for vehicles at the new traffic lights will help improve traffic flow by regulating traffic movements more effectively through the intersection.</p> <p>Traffic lights at the intersection will regulate the flow of traffic and merge tapers will improve safety for motorists.</p> <p>Duplication of the Mitchell Highway corridor is not part of the intersection upgrade project.</p>

Issue Category	Sub-issue Category	Number of submissions that raised this issue	Issues raised	Transport for NSW response
Support for project	Support project, request for bypass	2	Traffic lights will help but the long-term solution should be a bypass of Dubbo.	<p>Transport for NSW notes the positive feedback about the installation of traffic lights at the intersection. In relation to a ring road, studies show more than 90 per cent of motorists want to visit rather than travel past Dubbo, meaning an outer ring road option would only benefit 10 per cent of motorists. A ring road would also not solve east-west access to schools, the airport and emergency services during flooding.</p> <p>The River Street design out-performed the other six options in terms of providing improved local traffic flow in Dubbo, improved local freight and heavy vehicle traffic access across the river and for future growth in north-west Dubbo. It also will ensure the least impact to local property.</p> <p>There is no evidence or data to support the suggestion that upgrading Troy Bridge would be a better option than a bridge at River Street. There would be significantly more impacts to property in a busier part of Dubbo. It would not improve local flooding and east-west congestion would remain an issue.</p> <p>In relation to a Dubbo ring road, this would be the responsibility of Dubbo Regional Council to progress when there is a plan for Dubbo's expansion and for Council to seek NSW Government support for planning and delivery.</p> <p>In August 2019, the NSW Government committed to giving Dubbo Regional Council \$100,000 to carry out a feasibility study and investigate a southern crossing of the Macquarie River. This funding would allow Council to undertake a study on road impacts and assess whether the road network can support a new bridge in the proposed location.</p>
Support for project	Support project, request for more community engagement	1	Request for more community consultation as the community is not adequately informed.	<p>Transport for NSW implemented an extensive program of engagement for the Building a better Dubbo projects, including a number of activities that were carried out in the lead up to, and during the 33-day display period. These activities were designed to inform the community and stakeholders about what was happening and to encourage their involvement in the consultation process.</p> <p>Consultation for the Building a better Dubbo projects was ongoing before the May to June 2019 consultation period. Transport for NSW is committed to keeping the community informed and residents and stakeholders are encouraged to subscribe for ongoing project updates.</p> <p>During the display period, information was provided at eight staffed community information sessions in Dubbo, at five unstaffed display locations around Dubbo as well as during targeted stakeholder briefings and meetings with business and property owners, transport operators and interest groups.</p>

3. Consultation summary continued

Issue Category	Sub-issue Category	Number of submissions that raised this issue	Issues raised	Transport for NSW response
Support for project	Support project, request for other pedestrian crossings	1	<p>Request to install good railings around the traffic lights to restrain jay walkers.</p> <p>Request to install traffic lights at Orana Mall.</p> <p>Request to install traffic lights on Wheelers Lane to cater to patrons of the nearby bus stop.</p> <p>Request to install traffic lights on the Mitchell Highway between existing median strip and the turn into Orana Mall travelling from the south.</p>	<p>Pedestrian fencing will be installed in the median on each leg of the intersection. The pedestrian fencing, combined with the pedestrian crossings controlled by traffic lights, will improve pedestrian safety at the intersection.</p> <p>Transport for NSW notes the positive feedback about the installation of traffic lights at the intersection.</p> <p>Transport for NSW notes the comments about Orana Mall and Wheelers Lane. These locations are outside the scope of the projects which were displayed and are being delivered as part of Building a better Dubbo.</p>

Issue Category	Sub-issue Category	Number of submissions that raised this issue	Issues raised	Transport for NSW response
Other suggested changes/matters	Ring road	1	<p>A ring road will benefit both north Dubbo and the surrounding areas.</p> <p>River Street Bridge is a temporary measure, and lights / roundabouts will make no difference to local or highway traffic.</p>	<p>The New Dubbo Bridge team has finalised the Review of Environmental Factors (REF) Submissions Report which summarises the comments made during the public display. It also includes Transport for NSW's responses. The Submissions Report is available on the project website. Studies show more than 90 per cent of motorists want to visit rather than travel past Dubbo, meaning an outer ring road option would only benefit 10 per cent of motorists. A ring road would also not solve east-west access to schools, the airport and emergency services during flooding.</p> <p>The River Street design out-performed the other six options in terms of providing improved local traffic flow in Dubbo, improved local freight and heavy vehicle traffic access across the river and for future growth in north-west Dubbo. It also will ensure the least impact to local property.</p> <p>There is no evidence or data to support the idea that upgrading Troy Bridge would be a better option than a bridge at River Street. There would be significantly more impacts to property in a busier part of Dubbo. It would not improve local flooding and east-west congestion would remain an issue.</p> <p>In relation to a Dubbo ring road, this would be the responsibility of Dubbo City Council to progress when there is a plan for Dubbo's expansion and for Council to seek NSW Government support for planning and delivery.</p> <p>In August 2019, the NSW Government committed \$100,000 to Dubbo Regional Council to carry out a feasibility study and investigate a southern crossing of the Macquarie River. This funding will allow Council to undertake a study on road impacts and assess whether the road network can support a new bridge in the proposed location.</p>
	LH Ford widening	1	<p>Ineffective to have dual lane access to LH Ford Bridge if the bridge only caters to single lane travel.</p>	<p>The widening of LH Ford Bridge was examined as part of the development of options for the New Dubbo Bridge. The widening of LH Ford Bridge would require the widening of the Mitchell Highway on both sides of the river to ensure effective traffic flow. Without additional lanes on each side of the river, a widened LH Ford Bridge would cause congestion on both sides of the bridge as traffic would merge from two lanes on the bridge to one lane. Transport for NSW examined the impact of widening the Mitchell Highway on both sides of the river and concluded that the impacts to residents, businesses and the environment would be too great, with excessive costs required.</p>

3. Consultation summary continued

Issue Category	Sub-issue Category	Number of submissions that raised this issue	Issues raised	Transport for NSW response
Support for project	Installation of lights at Cobar Street	1	Suggestion to install lights at Cobar Street to maintain easy access to Westside Hotel.	<p>Transport for NSW assumes the respondent is referring to Baird Street. Transport for NSW engaged with the broader community, commuters and business owners about the proposed changes to Baird Street. In response to stakeholder feedback, Transport for NSW reviewed its traffic modelling and examined other potential options for traffic movements around the upgraded intersection. Transport for NSW has changed the design, retaining the right turn into Baird Street in both directions from the Newell Highway. The proposal includes installing traffic lights on all four legs of the intersection of Baird Street and the Newell Highway.</p> <p>The change to the design will maintain access to the businesses on the south-western side of the intersection, as well as the properties in Stonehaven Avenue.</p> <p>More information about the traffic light design was made available to the community in November 2019 and is available on the project website.</p>
Support for project	Impact of feedback on design	1	Seeking understanding of changes to design which have been made as a result of community feedback.	<p>In May and June 2019, Transport for NSW asked for feedback on the design for the upgrade of the Newell Highway and Mitchell Highway intersection. This feedback was analysed by Transport for NSW and used to help further develop the project.</p> <p>Transport for NSW had previously incorporated community feedback and made changes to the design. The parking in front of the Victoria Street shops is being retained with the exception of two spaces closest to the intersection. This was an amendment to the project after valuable feedback from the local community.</p> <p>Transport for NSW engaged with the broader community, commuters and business owners about the proposed changes to Baird Street. In response to stakeholder feedback, Transport for NSW reviewed its traffic modelling and examined other potential options for traffic movements around the upgraded intersection. Transport for NSW has changed the design, retaining the right turn into Baird Street in both directions from the Newell Highway. The proposal includes installing traffic lights on all four legs of the intersection of Baird Street and the Newell Highway.</p> <p>The change to the design will maintain access to the businesses on the south-western side of the intersection, as well as the properties in Stonehaven Avenue.</p> <p>More information about the traffic light design was made available to the community in November 2019 and is available on the project website.</p>

Issue Category	Sub-issue Category	Number of submissions that raised this issue	Issues raised	Transport for NSW response
Support for project	Safety improvements	1	Request for a turning bay for traffic turning right onto the Newell Highway from Baird Street and Baird Drive.	<p>Transport for NSW engaged with the broader community, commuters and business owners about the proposed changes to Baird Street. In response to stakeholder feedback, Transport for NSW reviewed its traffic modelling and examined other potential options for traffic movements around the upgraded intersection. Transport for NSW has changed the design to retain the right turn into and out of Baird Street in both directions from the Newell Highway. The proposal includes installing traffic lights on all four legs of the intersection of Baird Street and the Newell Highway.</p> <p>The change to the design will maintain access to the businesses on the south-western side of the intersection, as well as the properties in Stonehaven Avenue.</p> <p>More information about the traffic light design was made available to the community in November 2019 and is available on the project website.</p>
Support for project	Cyclist facilities	1	Not enough consideration has been given to cyclist facilities and options for alternative modes of transport other than cars and buses.	<p>The project includes a 150 metre shared bike path on the south-western side of the intersection. There are constraints around the intersection and there is not adequate room for additional dedicated cycle paths around the Newell Highway and Mitchell Highway intersection. Transport for NSW is committed to providing the community with options to cycle safely. Consideration is always given to cycling and where possible, facilities are provided.</p>
Support for project	Coloured concrete	1	Consider coloured concrete to combat glare on the road.	<p>It is not a standard practice to provide coloured concrete in the concrete median as it creates visibility issues and poses a potential safety risk to road users.</p>

3. Consultation summary continued

Issue Category	Sub-issue Category	Number of submissions that raised this issue	Issues raised	Transport for NSW response
Support for project	Victoria Street median strip changes	1	<p>Suggested changes to the current median strip design. Request to make the median strip:</p> <ul style="list-style-type: none"> • Narrower • Shorter • Positioned further south • Divided to allow east to west vehicle movements at 26 Victoria Street <p>Request to install planting into median strip to soften the streetscape.</p>	<p>The length of the Mitchell Highway median has been established based on providing sufficient storage length for the future predicted traffic volumes for the right turn lane onto the Newell Highway (southbound). Reducing this right turn lane to allow U-turn movements closer to the intersection will result in the queue for right-turning vehicles extending into the eastbound through lane, creating knock-on effects to traffic flow at the intersection. This would result in additional safety risks for road users. In addition, extending the U-turn facility closer to the intersection means vehicles undertaking a U-turn will be required to cross two lanes of traffic to the parking lane. This movement would be done in close proximity to the intersection, where sight-lines might be restricted to vehicles turning onto Victoria Street from the intersection.</p> <p>The median widths are governed by the number of lanes, traffic movement and allowable space. The median width proposed in the design is based on Australian standards.</p> <p>Transport for NSW assessed the planting of vegetation in the median against a number of criteria, including the ongoing maintenance of any plants. Transport for NSW determined that planting vegetation in this location would increase safety risks to maintenance workers.</p>

Table 4. Summary of comments and feedback for Mitchell Highway (Cobra Street) and Fitzroy Street intersection upgrade

Issue Category	Sub-issue Category	Number of submissions that raised this issue	Issues raised	Transport for NSW response
Support for project	Positive feedback	13	Support for the removal of the roundabout and replacement with traffic lights.	Transport for NSW notes positive feedback about the proposal.
Support for project	Cost of project	1	Support for the project but respondent asks why the project is so expensive.	<p>The \$14 million upgrade at the Mitchell Highway (Cobra Street) and Fitzroy Street intersection will improve safety and efficiency.</p> <p>The budget includes provision of:</p> <ul style="list-style-type: none"> • Traffic lights to replace the existing roundabout • New pedestrian crossings on all four sides of the intersection, with foot ramps to improve wheelchair and pram access • Intersection widening • Relocating underground service utilities, overhead power and storm water drainage • Improvements to street lighting • Improvements to road quality.
Opposition to project	Opposition to installation of traffic lights	3	<p>Respondent believes traffic lights are not required and congestion only occurs when a train travels through town.</p> <p>Respondent believes traffic lights will cause extensive queuing.</p> <p>Respondent believes roundabouts work better than lights.</p>	<p>The existing roundabout has a history of rear-end crashes particularly during peak travel times. Between 2013 and 2017 the roundabout had approximately 20 reported vehicle crashes, including six injuries and 13 tow-away crashes.</p> <p>The widened intersection will improve traffic flow. Replacing the roundabout with traffic lights will improve traffic efficiency by regulating traffic flow, reducing vehicle queue lengths now and to accommodate increasing traffic volumes into the future. Traffic lights will reduce congestion for both highway and local traffic, particularly during peak hours.</p>

3. Consultation summary continued

Issue Category	Sub-issue Category	Number of submissions that raised this issue	Issues raised	Transport for NSW response
Environmental concerns	Concern over tree removal	6	<p>Need for shade near the project and Dubbo generally.</p> <p>Request to plant three trees for each tree removed.</p> <p>Landscaping should be included as part of project.</p>	<p>The project design requires the removal of jacaranda trees on Fitzroy Street.</p> <p>Transport for NSW needed to balance a number of outcomes in relation to the location of the existing trees. This included the need to keep access to the pedestrian footpath, maintain car parking spaces and provide a space for underground utilities, water, electricity and drainage. These constraints were combined with the need to widen the road to allow the new traffic lights to be installed. There was not sufficient width to re-plant trees within the streetscape, adjacent to the footpath.</p> <p>Transport for NSW recognises the community significance of these trees. In 2016, mature replacement trees were planted along the eastern and southern boundary of Elston Park (near Cobra Street and Fitzroy Street) to offset this loss in line with Dubbo Regional Council committee resolutions.</p>
Intersection approaches and departures	Merging to one lane after the intersection	3	<p>Support for two lanes towards the eastbound approach.</p> <p>Concern about two lanes at the intersection merging into one.</p> <p>Improving the approaches to the intersection is all that is required (not traffic lights).</p>	<p>The new lights at the intersection will include designated turn lanes at the intersection approaches and extended merge lanes to improve intersection flow and reduced vehicle queue lengths. This configuration allows for three lanes at the intersection approach on each leg, and safe turn movements through the intersection. Traffic lights provide more efficiency and safer, regulated movements compared to retaining the roundabout. Traffic design modelling shows saturation and excessive queue lengths associated with the roundabout.</p> <p>The existing roundabout configuration has shortened merge tapers. The new intersection will allow for safer merge manoeuvres for motorists on Cobra Street.</p>

Issue Category	Sub-issue Category	Number of submissions that raised this issue	Issues raised	Transport for NSW response
Safety	Crest on Cobra Street	1	Crest on Cobra Street on approach to intersection impacts sight distance. Suggestion for installation of warning lights.	The road geometry of both Cobra Street and Fitzroy Street has been assessed in this design. This includes both vertical and horizontal road alignment. The intersection widening and improvements to the approaches and road crossing at the intersection mitigates the need for warning lights. These improvements and installation of traffic lights will also improve motorist and pedestrian sight distances.
Safety	LH Ford should be widened	1	LH Ford Bridge should be widened as one lane in each direction is not sufficient.	<p>Transport for NSW prepared a Review of Environmental Factors (REF) to assess the potential environmental impacts of the New Dubbo Bridge proposal. A Submissions Report has been prepared, which summarises the main issues raised by the community and responses to those issues. The LH Ford Bridge is addressed in the New Dubbo Bridge Submissions Report. The report is available on the project website.</p> <p>The widening of LH Ford Bridge was examined as part of the development of options for the New Dubbo Bridge. The widening of LH Ford Bridge would require the widening of the Mitchell Highway on both sides of the river to ensure effective traffic flow. Without additional lanes on each side of the river, a widened LH Ford Bridge would cause congestion on both sides of the bridge as traffic merged from two lanes on the bridge to one lane. Transport for NSW examined the impact of widening the Mitchell Highway on both sides of the river and concluded that the impacts to residents, businesses and the environment would be too great.</p>

3. Consultation summary continued

Issue Category	Sub-issue Category	Number of submissions that raised this issue	Issues raised	Transport for NSW response
Other suggested changes	Roundabout with traffic lights	1	Request for a combination of traffic lights and roundabout at the intersection, similar to an intersection at Erina.	<p>The development of the new traffic lights considered intersection traffic movements, traffic saturation modelling and road geometry, such as road camber and lane widths.</p> <p>Traffic lights at the intersection balance travel movements during high flow periods, while utilising a less imposing footprint than a roundabout to facilitate an equivalent traffic efficiency.</p> <p>The widened intersection will improve traffic flow and safety. Replacing the roundabout with traffic lights will improve traffic efficiency by regulating traffic flow at peak and non-peak operational times to accommodate increasing traffic volumes. Traffic lights will reduce congestion for highway and local traffic, particularly during peak hours.</p>
Cycle facilities	Improvement of cycling facilities	1	Respondent would like cycling facilities improved at the intersection and in Dubbo broadly.	<p>There are currently no cyclist facilities on Fitzroy Street and Cobra Street, beyond the intersection. Transport for NSW is committed to providing the community with options to cycle safely. Consideration is always given to cycling and where possible, facilities are provided.</p>



The LH Ford Bridge is currently undergoing strengthening work to accommodate Higher Mass Limit (HML) vehicles.

3. Consultation summary continued

3.4 Recommendations

New Dubbo Bridge

The New Dubbo Bridge team has finalised the Review of Environmental Factors (REF) Submissions Report which summarises the comments made during the public display. It also includes Transport for NSW's responses. The Submissions Report is available on the project website.

Newell Highway and Mitchell Highway intersection upgrade

Outcomes:

- Transport for NSW has modified the design for the intersection at Baird Street and the Newell Highway after listening to the Dubbo community.
- During the consultation process, Transport for NSW was made aware that restricting right turns around the intersection at Baird Street and the Newell Highway would impact commuters, residents and local businesses.
- Based on the feedback, Transport for NSW modified the design of the upgrade to include traffic lights, allowing a right hand turn onto Baird Street for vehicles travelling north on the highway.
- Newell Highway traffic will also be able to turn right onto Baird Street to travel towards west Dubbo.
- The parking in front of the Victoria Street shops is being retained with the exception of two spaces closest to the intersection. Transport for NSW made this amendment to the project after feedback from the community.

Mitchell Highway (Cobra Street) and Fitzroy Street

Outcomes:

- The proposed design requires the removal of jacaranda trees on Fitzroy Street. This is to improve sight distances for motorists, facilitate kerbside parking, and remove hazards away from travel lanes.
- Transport for NSW needed to balance a number of outcomes in relation to the location of the existing trees. This included the need to keep access to the pedestrian footpath, maintain car parking spaces and provide a space for underground utilities, water, electricity and drainage. These constraints were combined with the need to widen the road to allow the new traffic lights to be installed. There was not sufficient width to re-plant trees within the streetscape, adjacent to the footpath.
- Transport for NSW recognises the community significance of these trees. In 2016, mature replacement trees were planted along the eastern and southern boundary of Elston Park (near Cobra Street and Fitzroy Street) to offset this loss.



Super-advanced jacaranda trees were planted in 2016 along the eastern and southern boundaries of Elston Park to offset the loss of jacaranda trees in the road near the Mitchell Highway (Cobra Street) intersection with Fitzroy Street.

4. Next steps

New Dubbo Bridge

All submissions received during the display of the Review of Environmental Factors (REF) have been collated and considered by Transport for NSW. A submissions report has been prepared that summarises the comments made and Transport for NSW's responses.

All feedback received during the display period, including opposition to the River Street Bridge proposal, was assessed during the submissions process. This feedback was assessed against the outcomes of earlier community engagement carried out for the proposal, as well as technical studies. This information and analysis was considered during the finalisation of the Submissions.

The REF for the New Dubbo Bridge has been determined. The determination of the REF is the confirmation that the project meets all environmental requirements.

The determination allows Transport for NSW to continue the planning for the River Street Bridge project, including starting the detailed design.

Transport for NSW expects to complete the detailed design in 2021 and for construction to start in 2022.

Newell Highway and Mitchell Highway intersection upgrade

All comments and feedback received to the project have been considered and will potentially inform the next stages of the project. Transport for NSW will continue to engage with the community and stakeholders as the project progresses.

Some early works started in 2019 and construction will start early to mid-2020. The project is expected to open to traffic in 2021, weather permitting.

Prior to construction a series of activities will start including utilities investigations and relocations, temporary pavement work, building demolition and finalising detailed design, including stormwater and traffic signal designs.

Mitchell Highway (Cobra Street) and Fitzroy Street

All comments and feedback received to the project have been considered and will potentially inform the next stages of the project. Transport for NSW will continue to engage with the community and stakeholders as the project progresses.

Early work started in 2019, with construction scheduled to start in 2020 and the project is scheduled to open to traffic in 2021, weather permitting.

During the next phases of each project, Transport for NSW will continue to provide updates to and engage with the local community and key stakeholders relevant to each project and the overall Building a better Dubbo program. Communications will be through some or all of the following:

- Community/project updates distributed via letterbox drop, website or email
- Local newspaper notices/advertisements
- Project website updates (nswroads.work)
- Social media
- Roadside signage (variable message signs)
- Media releases
- Electronic newsletter distributed via established email database
- Future community information sessions
- Reports.

The project team for the Building a better Dubbo program and the five local road projects can be contacted via the following:



1800 803 818



dubboprojects@rms.nsw.gov.au



PO Box 36, Dubbo NSW 2830



nswroads.work/dubbo

Expected timeframes for the New Dubbo Bridge project are:

- Display concept design and REF – mid-2019
- New Dubbo Bridge Review of Environmental Factors (REF) Submissions Report – early 2020
- Start detailed design development – 2020
- Start construction – 2022
- Open to traffic – by the end of 2025.

Expected timeframes for the Newell Highway and Mitchell Highway intersection upgrade are:

- Early work, including geotechnical investigations, survey and utility investigation – 2018–19
- Community Consultation Summary report released – early 2020
- Start construction – early 2020
- Open to traffic – by the end of 2021.

Expected timeframes for the Mitchell Highway (Cobra Street) and Fitzroy Street intersection upgrade are:

- Community Consultation Summary report released – early 2020
- Early work – late 2019
- Start construction – early 2020
- Open to traffic – in 2021.

Appendices

Appendix A – Community Update



Roads and Maritime Services | May 2019

Building a better Dubbo

Road work, that works for you - community update



Artist's impression of the Newell Highway and Mitchell Highway intersection

The NSW Government is investing \$195 million in five road projects to build a better Dubbo. We are working to cut down your travel time, make your roads safer and ease congestion in and around Dubbo.

Have your say

Roads and Maritime is inviting feedback on the New Dubbo Bridge Review of Environmental Factors (REF) and concept design until **Friday 28 June 2019**. We are also inviting you to view the proposed designs for the Newell Highway and Mitchell Highway intersection upgrade and the Mitchell Highway (Cobra Street) and Fitzroy Street intersection upgrade. To ensure you stay informed of how changes may benefit or impact you, please register for updates at rms.work/dubbo. Roads and Maritime is building now for a better Dubbo tomorrow and delivering road works, that work for you.

Have
your
say

What is happening?

Plans are now on display for three major road projects in Dubbo, with work under way on two more. This community update provides information on:

- New Dubbo Bridge
- Newell Highway and Mitchell Highway intersection upgrade
- Mitchell Highway (Cobra Street) and Fitzroy Street intersection upgrade
- A snapshot of progress on LH Ford Bridge strengthening and Newell Highway upgrade, West Dubbo.

New Dubbo Bridge

The NSW Government is investing in a new bridge over the Macquarie River in Dubbo, as part of its \$195 million commitment to Building a better Dubbo. The new bridge will ease congestion and enhance reliable access through Dubbo during flood events. Roads and Maritime invites you to provide feedback on the REF by **Friday 28 June 2019**.

Project background

The New Dubbo Bridge provides another river crossing in Dubbo during flood events and will maintain reliability for commuter and heavy freight traffic through Dubbo during these events.

Following investigation of six strategic options and community consultation, River Street was announced as the preferred route for the new bridge in May 2017.

The preferred option has been chosen to improve freight efficiency on the Newell Highway, reduce traffic congestion and provide an alternative route during flood events.

It will assist in easing congestion in Dubbo when needed most.

Project benefits

The New Dubbo Bridge will:

- Provide another river crossing and improve traffic flow during a flood
- Improve traffic flow in Dubbo and reduce average traffic delays
- Improve local freight and heavy vehicle traffic access across the river
- Provide access and plan for future growth in north-west Dubbo
- Provide a new four-way intersection at Thompson Street, Whylandra Street and the Newell Highway
- Improve the efficiency of the Newell Highway during flood times for traffic travelling through Dubbo

What is happening?

Roads and Maritime has developed a concept design and environmental assessment of the proposed New Dubbo Bridge. The concept design and REF will be on display from Monday 27 May 2019 to Friday 28 June 2019.

Proposed project timeline



Review of Environmental Factors

The Review of Environmental Factors (REF) assesses the potential social and environmental impacts of the project and identifies ways to minimise these impacts. The REF investigates the following key issues for the project:

- **Traffic and transport**
- **Socio-economic**
- **Noise and vibration**
- **Landscape character and visual**
- **Biodiversity**
- **Other impacts**

Roads and Maritime will collate and consider the submissions received during the public display of the REF. After community feedback has been received, a submissions report will be prepared that will summarise the comments made and Roads and Maritime's responses.

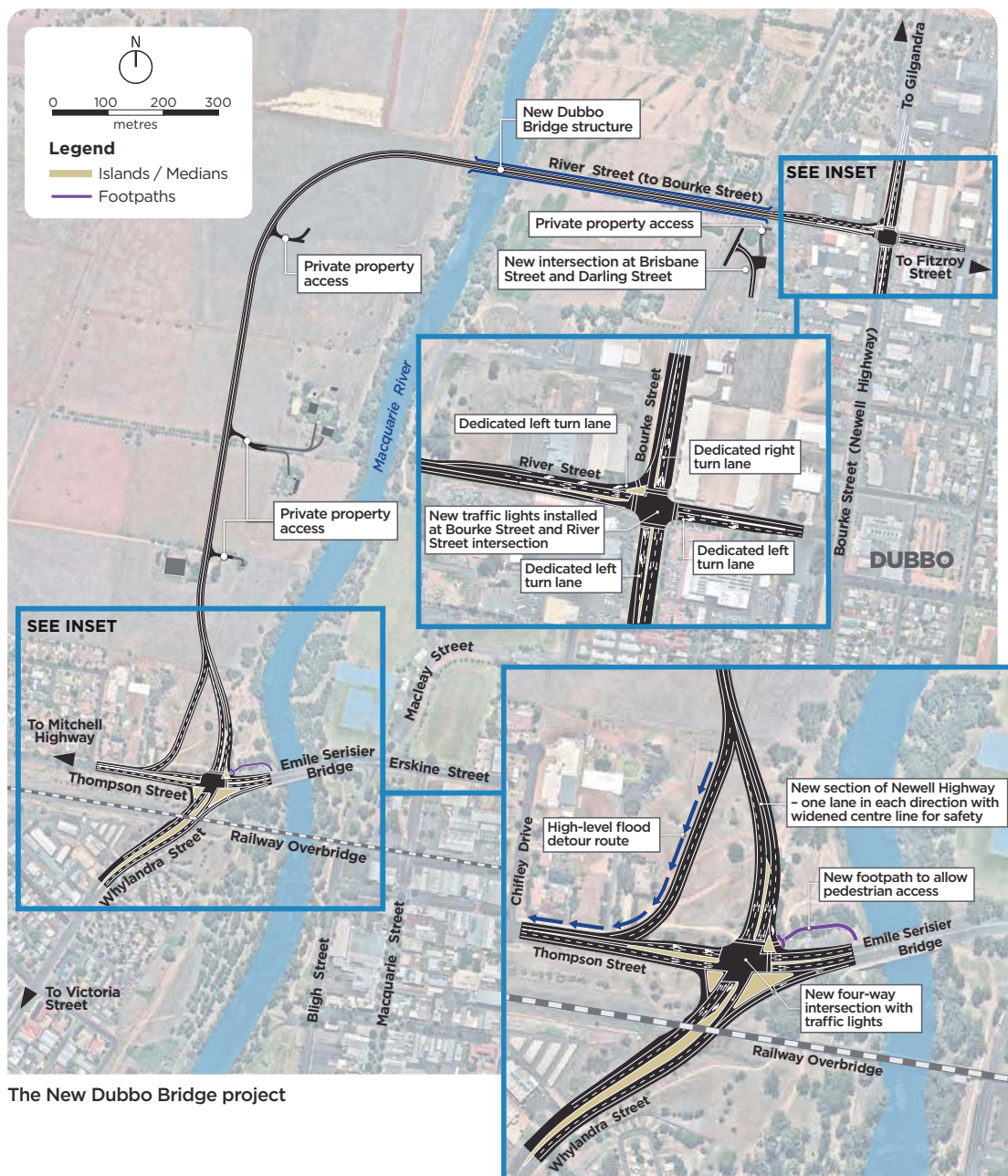
Further information on the documents within the REF are available on the project website.

Appendices continued

Project features of the New Dubbo Bridge

The new 545 metre bridge will connect the western shore of the Macquarie River to River Street, travelling west of the river. The New Dubbo Bridge project will also include:

- New and upgraded intersections at Thompson Street, Whylandra Street, and the Newell Highway
- Realign the Newell Highway with new separated lanes north of Whylandra Street
- Upgrade the intersection at Bourke Street and River Street.



The New Dubbo Bridge project

Mitchell Highway (Cobra Street) and Fitzroy Street intersection upgrade

The NSW Government is investing \$14 million to upgrade the Mitchell Highway (Cobra Street) and Fitzroy Street intersection to improve safety and efficiency.

The roundabout at the intersection will be replaced with traffic lights to improve road safety and traffic efficiency. This route is a vital part of the road network through Dubbo and the surrounding region.

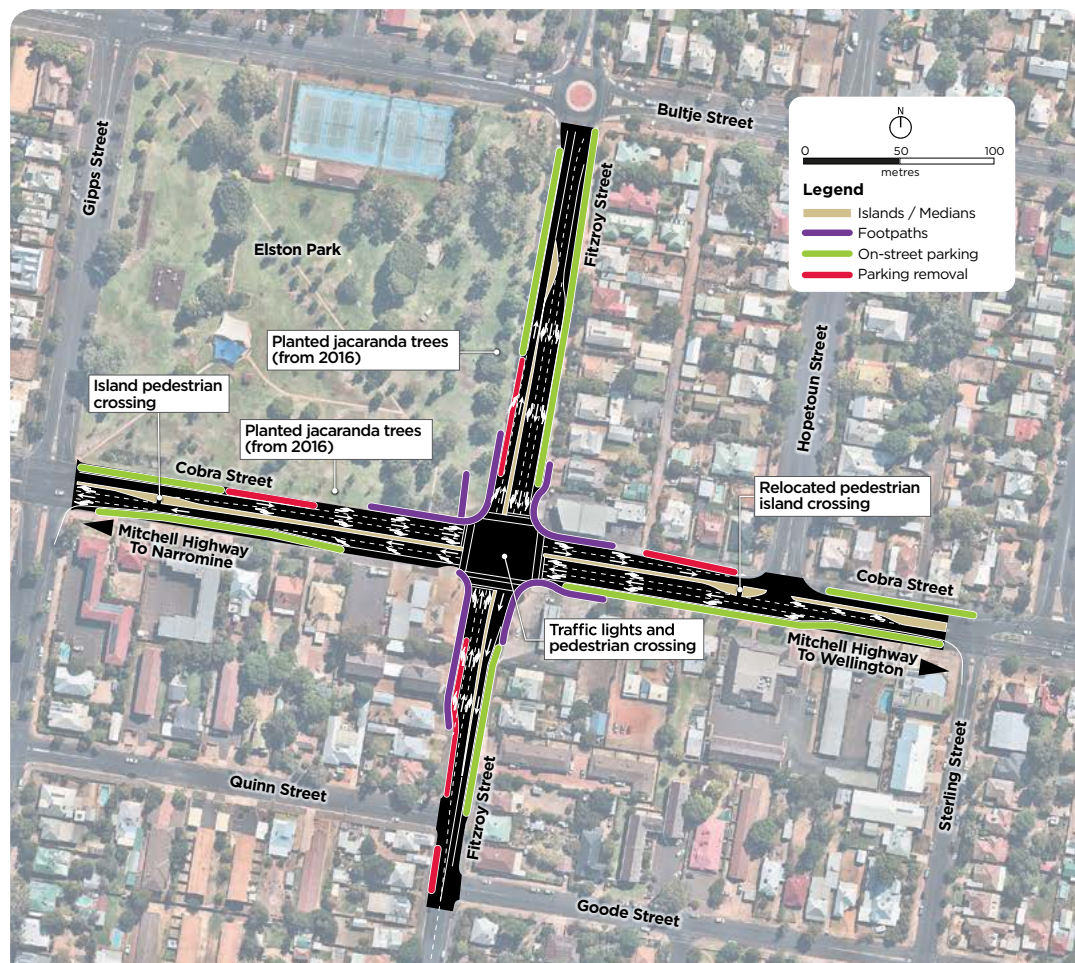
The upgrade will reduce congestion for highway and local traffic, particularly during peak hours.

Project features

The Mitchell Highway (Cobra Street) and Fitzroy Street intersection upgrade includes the following features:

- Traffic lights will replace the existing roundabout
- New pedestrian crossings on all four sides of the intersection, with foot ramps to improve wheelchair and pram access
- Widened intersection to improve traffic flow
- Relocating some underground service utilities and overhead power
- Improvements to street lighting
- Improvements to road quality

The proposed Mitchell Highway (Cobra Street) and Fitzroy Street intersection upgrade



Building a better Dubbo - Community update

Newell Highway and Mitchell Highway intersection upgrade

The NSW Government is investing \$20 million to upgrade the Newell Highway and Mitchell Highway intersection to improve safety and efficiency. The roundabout will be removed and replaced with traffic lights to better regulate traffic flow.

This critical upgrade will mean reduced congestion at this busy intersection for locals and for traffic travelling through Dubbo.

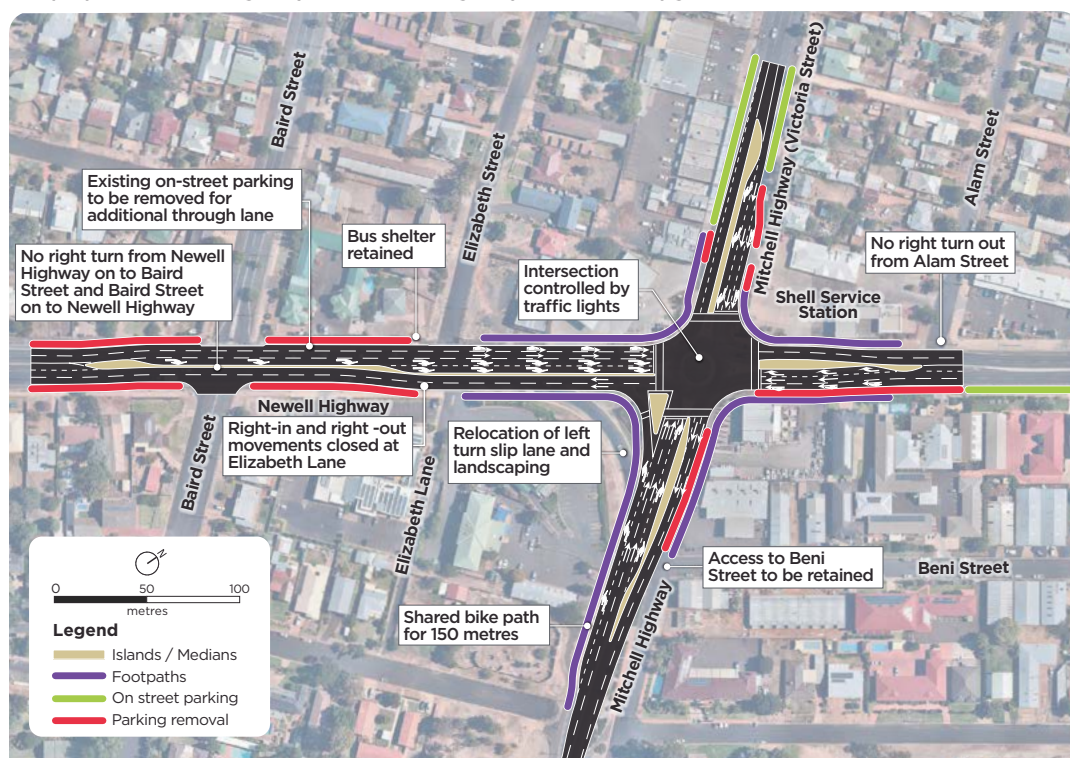
The Newell Highway and Mitchell Highway are part of the National Land Transport Network - an essential link for businesses and industries connecting major cities and regions. These routes are a vital part of the road network through Dubbo and the surrounding region.

Project features

The Newell Highway and Mitchell Highway intersection upgrade includes the following features:

- Traffic lights will replace the existing roundabout
- New pedestrian crossings on all four sides of the intersection, with foot ramps to improve wheelchair and pram access
- Intersection widening to allow for increasing traffic volumes
- Additional merge lane that minimises parking loss at Victoria Street shops
- Relocation of underground utilities and overhead power
- Safer turn paths for road trains (up to 36.5m long)
- New stormwater system to improve drainage in a high rainfall event

The proposed Newell Highway and Mitchell Highway intersection upgrade



Roundabout replaced with traffic lights to improve traffic flow



Reduced congestion at this intersection for locals and through traffic

Local projects under construction

LH Ford Bridge strengthening

The NSW Government is strengthening the LH Ford Bridge to extend its service life, improve safety for motorists and increase efficiency for heavy vehicles.

Work on the bridge started in November 2018 and is expected to be complete in early 2020. We will continue to engage with the community about any impacts as work progresses.

Newell Highway upgrade, West Dubbo

Work has started on the NSW Government's \$12 million upgrade to the Newell Highway in West Dubbo to provide a stronger and longer lasting road.

Stage One of the upgrade, between Golf Links Creek Bridge and north of Minore Road, started work in April 2019.

Have your say

Roads and Maritime is inviting feedback on the New Dubbo Bridge REF and concept design until **Friday 28 June 2019**.

To ensure you stay informed of how any changes may provide benefits or impacts, you can register for updates at rms.work/dubbo.

Roads and Maritime is building now for a better Dubbo tomorrow and delivering road works, that work for you.

Visit us online

Have your say and stay informed by visiting our project website at rms.work/dubbo to view all project documents and to make a submission.

Drop in sessions

We recognise the importance of community feedback and are inviting the community to have its say on the design of the New Dubbo Bridge and the environmental assessments.

We are also inviting you to view the proposed designs for the Newell Highway and Mitchell Highway intersection upgrade and the Mitchell Highway (Cobra Street) and Fitzroy Street intersection upgrade at the following locations:

Shopfront open

2/163 Macquarie Street, Dubbo,
Tuesday 28 May, 9am-3pm
Thursday 30 May, 12pm-6pm
Wednesday 5 June, 9am-3pm
Thursday 13 June, 9am-3pm
Wednesday 19 June, 11am-5pm
Wednesday 26 June, 9am-3pm

Dubbo Farmers Market

Corner Macquarie Street and Newell Highway, Dubbo
Saturday 1 June, 8am-12pm

Orana Mall Stall (in front of Big W)

Windsor Parade, Dubbo
Thursday 6 June, 4pm-7pm

Unstaffed displays

Dubbo Regional Council

Corner Church Street and Darling Street

Western Plains Cultural Centre

Wingewarra Street

Dubbo Visitor Information Centre

Corner Macquarie Street and Newell Highway

TAFE Western Dubbo College

Myall Street Campus

Macquarie Regional Library

Corner Macquarie Street and Talbragar Street

Contact us:

If you have any questions or would like more information on Dubbo road projects please contact our project team:

☎ 1800 803 818 (toll free)

@ dubboprojects@rms.nsw.gov.au

🌐 rms.work/dubbo

✉ PO Box 36 Dubbo NSW 2830

Building a better Dubbo



If you need help understanding this information, please contact the Translating and Interpreting Service on **131 450** and ask them to call us on **1800 803 818**



May 2019
RMS. 19.1243

Privacy: Roads and Maritime Services ("RMS") is subject to the *Privacy and Personal Information Protection Act 1998* ("PIIP Act") which requires that we comply with the Information Privacy Principles set out in the PIIP Act. All information in correspondence is collected for the sole purpose of assisting in the assessment of this proposal/ delivering this project. The information received, including names and addresses of respondents, may be published in subsequent documents unless a clear indication is given in the correspondence that all or part of that information is not to be published. Otherwise RMS will only disclose your personal information, without your consent, if authorised by the law. Your personal information will be held by RMS. You have the right to access and correct the information if you believe that it is incorrect.

Appendix B – Postcard



Roads and Maritime Services | May 2019

Building a better Dubbo

Road work, that works for you

The NSW Government is investing a combined \$195 million to upgrade the road network in Dubbo for the local and wider community. The Building a better Dubbo road improvements program will increase the capacity of Dubbo's roads, reducing travel times and congestion while improving safety and connectivity. Roads and Maritime Services is inviting the community to view and provide feedback on the New Dubbo Bridge and view designs for two major intersection upgrades in Dubbo. We are inviting feedback until **Friday 28 June 2019**.



Drop in sessions

Our project team will be available to discuss the New Dubbo Bridge concept design and Review of Environmental Factors (REF).

We are also inviting you to view the proposed designs for the Newell Highway and Mitchell Highway intersection upgrade and the Mitchell Highway (Cobra Street) and Fitzroy Street intersection upgrade at the following locations:

Shopfront open

2/163 Macquarie Street, Dubbo
 Tuesday 28 May, 9am-3pm
 Thursday 30 May, 12pm-6pm
 Wednesday 5 June, 9am-3pm
 Thursday 13 June, 9am-3pm
 Wednesday 19 June, 11am-5pm
 Wednesday 26 June, 9am-3pm

Dubbo Farmers Market

Corner Macquarie Street and Newell Highway, Dubbo
 Saturday 1 June, 8am-12pm
Orana Mall Stall (in front of Big W)
 Windsor Parade, Dubbo
 Thursday 6 June, 4pm-7pm

Unstaffed displays

Dubbo Regional Council
 Corner Church Street and Darling Street

Western Plains Cultural Centre
 Wingewarra Street

Dubbo Visitor Information Centre
 Corner Macquarie Street and Newell Highway

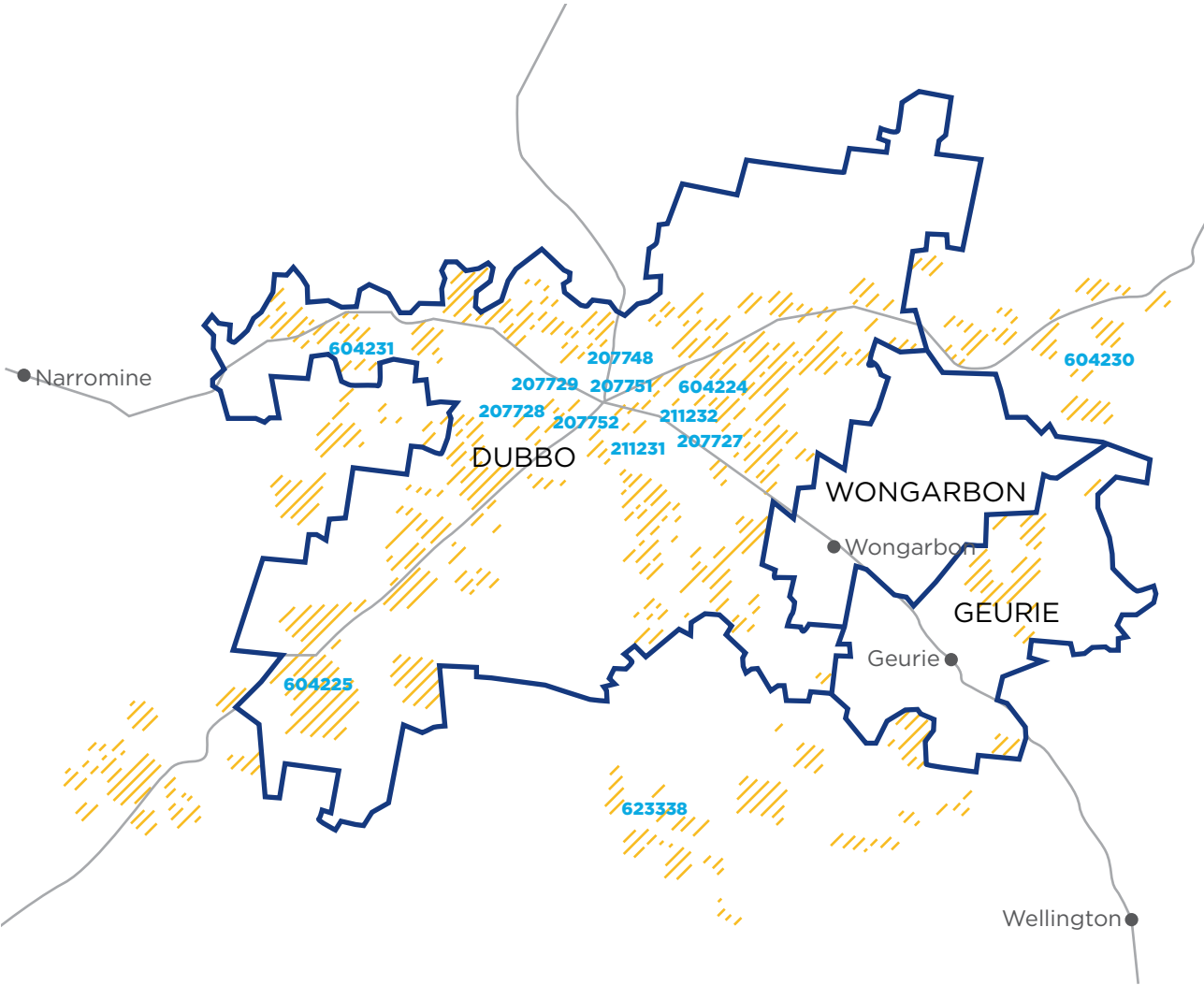
TAFE Western Dubbo College
 Myall Street Campus

Macquarie Regional Library
 Corner Macquarie Street and Talbragar Street



RMS 19.1242

Appendix C – Postcard distribution area



Appendices continued

Appendix D – Newspaper advertisement in Dubbo Photo News

Dubbo Photo News

4

IN BRIEF

Regional brainiacs wanted for September Brainstorm

A UNIQUE workshop in September will bring together regional researchers, as well as industry, business and government people to brainstorm ways to bring positive change to regional NSW.

"Bringing regional leaders together in this way has the potential to be very powerful. It only takes one idea, workshoped in a room full of potential collaborators, supporters and stakeholders, to effect real change in regional NSW," Western Research Institute CEO Karly Woolley said.

Participants will be able to actively engage during the workshop using their phones, tablets or laptops, thanks to a special collaboration app provided through a sponsorship arrangement.

The September 26 workshop will be held in the CSU Engineering building in Bathurst.

World Environment Day at Tharpa Choeling

DISCUSSING alternative energy such as Bodangora Windfarm and taking an introductory class in Tai Chi are two activities planned at the Tharpa Choeling Wellington Buddhist Centre this weekend to mark World Environment Day.

On Saturday and Sunday, June 8 and 9, from 12 noon until 4pm each day, a schedule of free events will be offered to visitors including the opportunity to win an eco-raffle.

Classes in upcycling, how to make your own potpourri, skin care products and incense holder, and introductory classes in yoga, vegetarianism and veganism, will be held.

Tharpa Choeling is located at 166 Arthur Street Wellington, phone 6845 4661.

June 6-12, 2019 **Dubbo Photo News**

HORSE SPORT

Horse event to feature riding demo by "inspirational" Jamie



From a State of Origin pep talk to Geurie horse event

Jamie Dodge Manning is an ambassador for Limbs For Life. He'll be at the Geurie grounds this weekend. He's pictured with wife Karen. PHOTO: MEGROSE PHOTOGRAPHY

By **GEOFF MANN**

TEAM Penning & Arena Sorting are on the card at the Geurie grounds to celebrate the Queen's Birthday long weekend.

President of the Central West Working Horse Association (CWWHA) Jenny Tracy is looking forward to three days of keen competition and ongoing fun and friendship.

"The event is a very popular horse sport as competitors of any age and riding ability are encouraged to come and have a go. One of our real draw cards is that the required team of three riders can be made up of family members, making it a truly great family sport."

"Over the weekend we will be raising money for Limbs For Life, an organisation that supports amputees. One of our club's good mates and valued sponsors, Jamie Dodge Manning from the local area, will be giving a riding demonstration to show our other competitors that anything is possible if you put your mind to it," Jenny added.

Jamie, who is an ambassador for Limbs for Life, was involved in a horrific car accident in 2014 and as a result became a double amputee as well as suffering burns to 40 per cent of his body.

"Jamie is an amazing human with an unbreakable spirit," Jenny said with admiration.

In fact, Jamie told *Dubbo Photo News* he was invited to speak to the NSW State of Origin team last week when they were in camp preparing for the first State of Origin.

"We want to thank Jamie for his continued sponsorship of our club and, in return, we will raise money for Limbs For Life over the weekend."

Jenny also told *Dubbo Photo News* that the CWWHA will hopefully also be unwinding a new AED (Automated External Defibrillator) device.

"It will be installed and made available to the many organisations that use the amazing facilities run by the Geurie Trust."

If you would like more details about the event this long weekend, contact Jenny Tracy on 0438 845 736.

NSW

Roads and Maritime Services

Building a better Dubbo

The NSW Government is investing \$195 million in five road projects which will cut down your travel time, make your roads safer and ease congestion in and around Dubbo.

Information on these major road projects in Dubbo will be on display for public viewing from **Monday 27 May to Friday 28 June 2019**:

- New Dubbo Bridge - Review of Environmental Factors and concept design
- Upgrade of Newell Highway intersection with Mitchell Highway design
- Upgrade of Mitchell Highway (Cobra Street) intersection with Fitzroy Street design

New Dubbo Bridge - Review of Environmental Factors (REF)

The Review of Environmental Factors (REF) assesses the potential social and environmental impacts of the project and identifies ways to minimise these impacts. The REF investigates the following key issues for the project:

- Traffic and transport
- Landscapes character and visual
- Socio-economic
- Biodiversity
- Noise and vibration
- Other impacts

Roads and Maritime will collate and consider the submissions received during the public display of the REF. After community feedback has been received, a submissions report will be prepared that will summarise the comments made and Roads and Maritime's responses.

Further information on the documents within the REF is available at rms.work/dubbo

Roads and Maritime is committed to consulting with the community and is seeking your feedback on the display documents. A number of information sessions will take place in Dubbo where you can meet with the project team to discuss the New Dubbo Bridge concept design and environmental assessment as well as the proposed designs for both intersection upgrades.

To take a look at how we'll make moving around Dubbo easier and improve your commute, visit rms.work/dubbo or see us at one of our pop up locations.

Details on where you'll find us and how you can give your feedback can also be found on the website.

Have your say

Please provide your feedback on the REF and concept design for New Dubbo Bridge **Friday 28 June 2019**, by sending your written comments to:

Email: dubboprojects@rms.nsw.gov.au

Mail: New Dubbo Bridge, Roads and Maritime Services, PO Box 36, Dubbo NSW 2830

Web: rms.work/dubbo and clicking on the feedback link

Are You Considering Cosmetic Breast Enhancement?

One of Australia's most experienced Plastic Surgeons, Assoc. Professor Haertsch has introduced a new breast implant service at Dubbo Private Hospital.

- ✓ Safe
- ✓ Affordable
- ✓ Day Surgery
- ✓ State-of-the-art implants

Call 1300 NEW BREAST
(639 273278)

Appendix E – Newspaper advertisement in Dubbo Daily Liberal

Dubbo Daily Liberal

dailyliberal.com.au

Monday May 27, 2019 DAILY LIBERAL 5
NEWS

Homestead hosts history

BY ORLANDER RUMING

A UNIQUE collection of Georgian glass is on display for a short time at Dundullimal Homestead.

There are 40 items dating from 1700 to 1840 on display from the Havelberg-Smith collection. They include wine glasses, finger bowls, jugs and salt holders.

National Trust regional properties and committees coordinator Claire Baddeley said the collection came from a time when glass was a luxury, unlike today.

"Only the very wealthy could afford beautiful glass like this because it was all handmade. One of the purposes of the exhibition is not only to highlight the exhibition but also to show the diversity of skills and all the different techniques, like the air twist stems," Ms Baddeley said.

She said it wasn't very common for historic collections and objects to tour to regional venues. Places like Dundullimal Homestead were chosen because of the relevant context.

"The family who would

Save yourself a long drive and come and see this beautiful and unique display at Dundullimal Homestead...

Karen Hagan

have lived here from the late 1830s onward, they would have been well off. They may not have glass to this standard. But they would have aspired to have beautiful glass like this," Ms Baddeley said.

Everything in the collection is handmade. Some of the techniques used to make the Georgian glass are still used today.

"Pre-Victorian era was really the height of glass making. By the 1860s they were able to manufacture pressed and moulded glass so they could manufacture mass number of things," Ms Baddeley said.

Dundullimal Homestead coordinator Karen Hagan said being able to view the Georgian Glass: Colonial Style collection at a regional location was a marvelous opportunity for both Dubbo residents and visitors.

"Save yourself a long drive and come and see this beautiful and unique display at Dundullimal Homestead, one of the region's most significant colonial settlements," Ms Hagan said.

The 40 items on display are part of a larger 90 piece collection. It was bequeathed to the National Trust (NSW) by Dean Donald Havelberg in 2014.

The entrance to see the touring exhibition is included in the admission fee for Dundullimal Homestead.

It will be on display until July 13.

Dundullimal Homestead is the second stop on the Georgian Glass: Colonial Style tour. The 40-piece collection will also be displayed at Lindesay in Darling Point, Saumarez Homestead in Armidale and finally at Grossman and Brough House in Maitland.



HISTORY: National Trust regional property and committees coordinator Claire Baddeley with some of the pieces of glassware on display. **Photo:** BELINDA SOOLE

Roads and Maritime Services

Building a better Dubbo

The NSW Government is investing \$195 million in five road projects which will cut down your travel time, make your roads safer and ease congestion in and around Dubbo.

Information on three major road projects in Dubbo will be on display for public viewing from **Monday 27 May to Friday 28 June 2019**:

- New Dubbo Bridge - Review of Environmental Factors and concept design
- Upgrade of Newell Highway intersection with Mitchell Highway design
- Upgrade of Mitchell Highway (Cobra Street) intersection with Fitzroy Street design

New Dubbo Bridge - Review of Environmental Factors (REF)

The Review of Environmental Factors (REF) assesses the potential social and environmental impacts of the project and identifies ways to minimise these impacts. The REF investigates the following key issues for the project:

- Traffic and transport
- Landscape character and visual
- Socio-economic
- Biodiversity
- Noise and vibration
- Other impacts

Roads and Maritime will collate and consider the submissions received during the public display of the REF. After community feedback has been received, a submissions report will be prepared that will summarise the comments made and Roads and Maritime's responses.

Further information on the documents within the REF is available at rms.work/dubbo

Roads and Maritime is committed to consulting with the community and is seeking your feedback on the display documents. A number of information sessions will take place in Dubbo where you can meet with the project team to discuss the New Dubbo Bridge concept design and environmental assessment as well as the proposed designs for both intersection upgrades.

To take a look at how we'll make moving around Dubbo easier and improve your commute, visit rms.work/dubbo or see us at one of our pop up locations.

Details on where you'll find us and how you can give your feedback can also be found on the website.

Have your say

Please provide your feedback on the REF and concept design for New Dubbo Bridge **Friday 28 June 2019**, by sending your written comments to:

Email: dubboprojects@rms.nsw.gov.au

Mail: New Dubbo Bridge, Roads and Maritime Services, PO Box 36, Dubbo NSW 2830

Web: rms.work/dubbo and clicking on the feedback link

Injured?

Get expert legal advice from Sheri Carolan, an Accredited Specialist who will see you locally in Dubbo.

Gordon Legal

IT'S PERSONAL

Contact Gordon Legal today on (02) 6884 5661.

No win No Fee
gordonlegal.com.au

Appendix F – Digital advertisement



Appendix G – Radio advertisement

Building a better Dubbo

Radio live read

The NSW Government is Building a Better Dubbo with five new road projects.

We're working to ease congestion, to make your roads safer and save you travel time.

As with any major change, there may be disruption.

Register now at nswroads.work/dubbo to ensure you stay informed of how any changes may impact and benefit you.

We are building now for a better Dubbo tomorrow and delivering road works, that work for you.

Appendix H – Media release

New Dubbo Bridge REF and Concept Design Public Display

May 2019

The Review of Environmental Factors (REF) and concept design of the New Dubbo Bridge is now on public display.

A Roads and Maritime Services spokesperson said the display period is an opportunity for the community to have their say on the proposed new river crossing.

“During this period, the community is invited to provide their comments on the design and REF. This will help Roads and Maritime to understand any issues and will inform our planning and delivery of the new bridge.”

The River Street route was selected by Roads and Maritime as the preferred option following a comprehensive selection process supported by community consultation. The River Street option will be the most effective solution to maintaining traffic flow and access into and out of Dubbo during flood events.

“The new bridge will provide an alternative route for vehicles during flood events,” the spokesperson said.

“It will also help improve freight efficiency on the Newell Highway and reduce traffic congestion.”

The designs for two other major road projects in Dubbo will also be on display at the same time. Roads and Maritime is planning to upgrade the Newell Highway and Mitchell Highway intersection, and the Mitchell Highway (Cobra Street) and Fitzroy Street intersection.

“Both of these intersection upgrades will involve the replacement of roundabouts with traffic lights to better regulate traffic flow and improve safety for pedestrians and motorists.”

The three projects are part of a larger commitment by the NSW Government towards ensuring Dubbo is prepared for the future.

“The NSW Government has invested \$195 million in five road projects to build a better Dubbo. These projects will reduce travel times, improve road safety and ease congestion.”

The community is invited to attend drop-in sessions from Monday 27 May to Friday 28 June 2019 at various locations around Dubbo to speak with the project team, provide feedback and learn more about the projects.

Roads and Maritime invites you to have your say on the intersection display plans, concept design and Review of Environmental Factors for the New Dubbo Bridge by Friday 28 June 2019. Submissions can be made online, via email or mail. All feedback and submissions received will be considered as Roads and Maritime works to finalise the project proposal.

For more information and to keep up to date with the project, visit the project page at nswroads.work/dubbo.

Appendix I – Media Release

Community helps Redesign Baird Street Intersection

November 2019

Community feedback has shaped a new design for the intersection of Baird Street and the Newell Highway in Dubbo.

Member for Dubbo Dugald Saunders said the changes to the design demonstrate the NSW Government's commitment to working with the community to ensure road upgrades meet local needs.

"The NSW Government is committed to delivering road projects that support local economies and keep friends and families connected," Mr Saunders said.

"Earlier this year Transport for NSW went out for community consultation on a concept design for the Newell Highway and Mitchell Highway intersection upgrade.

"As part of this consultation, feedback was received that suggested restricting right turns around Baird Street and the Newell Highway would impact commuters, residents and local businesses.

"As a result, the NSW Government has modified the design of the intersection at Baird Street to include traffic lights to allow right turns from the Newell Highway onto Baird Street and from Baird Street onto Newell Highway towards Dubbo CBD.

"The design change will increase access to local businesses and improve safety and efficiency for residents, truck drivers and visitors. This is a great win for the community."

The installation of traffic lights at Baird Street is part of the broader project to upgrade the Newell and Mitchell Highway intersection.

More information on the project is available <https://www.rms.nsw.gov.au/projects/newell-highway/newell-highway-and-mitchell-highway-intersection.html>.

Appendix J – Feedback form

New Dubbo Bridge feedback form



The NSW Government is investing in a new bridge over the Macquarie River in Dubbo, as part of its \$195 million commitment to building a better Dubbo. Roads and Maritime Services has developed a concept design and environmental assessment of the proposed New Dubbo Bridge. The concept design and Review of Environmental Factors (REF) will be on display from Monday 27 May to Friday 28 June 2019.

Roads and Maritime is inviting feedback during the REF display. After community feedback has been received, a submissions report will be prepared that will summarise the comments made and Roads and Maritime's responses.

We want to know your thoughts on the New Dubbo Bridge concept design and REF.
Have your say by filling out the short survey below.

Your contact details (Providing this information is optional)

Name: _____
Organisation/business (if applicable): _____
Address: _____
Email: _____
Contact phone number: _____

What is your preferred way to receive information about this project? You can choose more than one.

New Dubbo Bridge website ☐ Email ☐ Letterbox drop ☐
SMS ☐ Community information sessions ☐
Social Media ☐ E-newsletter ☐

Demographic information.

The following questions will help us gain an understanding of how to improve our consultation in the future.
(Providing this information is optional)

How old are you?

Under 17 ☐
17 - 29 ☐
30 - 39 ☐
40 - 49 ☐
50 - 59 ☐
60+ ☐

Please turn over to continue the survey

rms.nsw.gov.au

rms.nsw.gov.au

1

To help us identify what matters most to you, we would like your views on a number of topics in relation to the New Dubbo Bridge. You can also make comments about any topics that interest you, even if they are not listed below.

1. Motorist and pedestrian safety

2. Noise and air pollution

3. Environmental impacts

4. Local traffic

5. Heavy vehicles and freight traffic

rms.nsw.gov.au

2

6. Community engagement

7. Other

8. Do you have any other general comments on the proposed New Dubbo Bridge?

Would you like to be added to our mailing list?

Yes ☐ No ☐

If so, and you would like us to contact you on details other than those you provided on Page 1, please provide alternative contact details below:

Email address: _____
Postal address: _____

Further information and feedback

Email: dubboproject@rms.nsw.gov.au

Phone: 1800 803 818

Web: rms.work/dubbo

Mail: PO Box 36 Dubbo NSW 2830

Thank you for taking time to complete this survey

rms.nsw.gov.au

3

Appendices continued

Appendix K – Feedback form

Transport for NSW's response to submissions received

Hi ,

Thank you for taking the time to provide us with your feedback on the New Dubbo Bridge project.

The concept design and Review of Environmental Factors (REF) were on display for public comment from Monday 27 May 2019 to Friday 28 June 2019. All submissions made during the display period will be addressed and responded to in a submissions report and will be used to further develop the project.

The submissions report will be made publicly available and once finalised we will provide you with a more detailed response advising where we have addressed your submission in the report.

Kind Regards

Alexandra Hartwig
Senior Project Development Manager
New Dubbo Bridge



Before printing, please consider the environment

IMPORTANT NOTICE: This email and any attachment to it are intended only to be read or used by the named addressee. It is confidential and may contain legally privileged information. No confidentiality or privilege is waived or lost by any mistaken transmission to you. Roads and Maritime Services is not responsible for any unauthorised alterations to this email or attachment to it. Views expressed in this message are those of the individual sender, and are not necessarily the views of Roads and Maritime Services. If you receive this email in error, please immediately delete it from your system and notify the sender. You must not disclose copy or use any part of this email if you are not the intended recipient.

Appendix L – Posters



Roads and Maritime Services | May 2019

Building a better Dubbo

Road work, that works for you

New Dubbo Bridge

The NSW Government is investing in a new bridge over the Macquarie River in Dubbo, as part of its \$195 million commitment to Building a better Dubbo. The new bridge will ease congestion and maintain reliable access through Dubbo during flood events. Roads and Maritime invites you to provide feedback on the Review of Environmental Factors (REF) by **Friday 28 June 2019**.

Project background

The New Dubbo Bridge provides another river crossing in Dubbo during flood events and will maintain reliability for commuter and heavy freight traffic through Dubbo during these events.

Following investigation of six strategic options and community consultation, River Street was announced as the preferred route for the new bridge in May 2017.

The preferred option has been chosen to improve freight efficiency on the Newell Highway, reduce traffic congestion and provide an additional route during flood events. It will assist in easing congestion in Dubbo when needed most.

Project features

The new 545 metre bridge will connect the western shore of the Macquarie River to River Street, travelling over the flood plain west of the river. The New Dubbo Bridge project will also include:

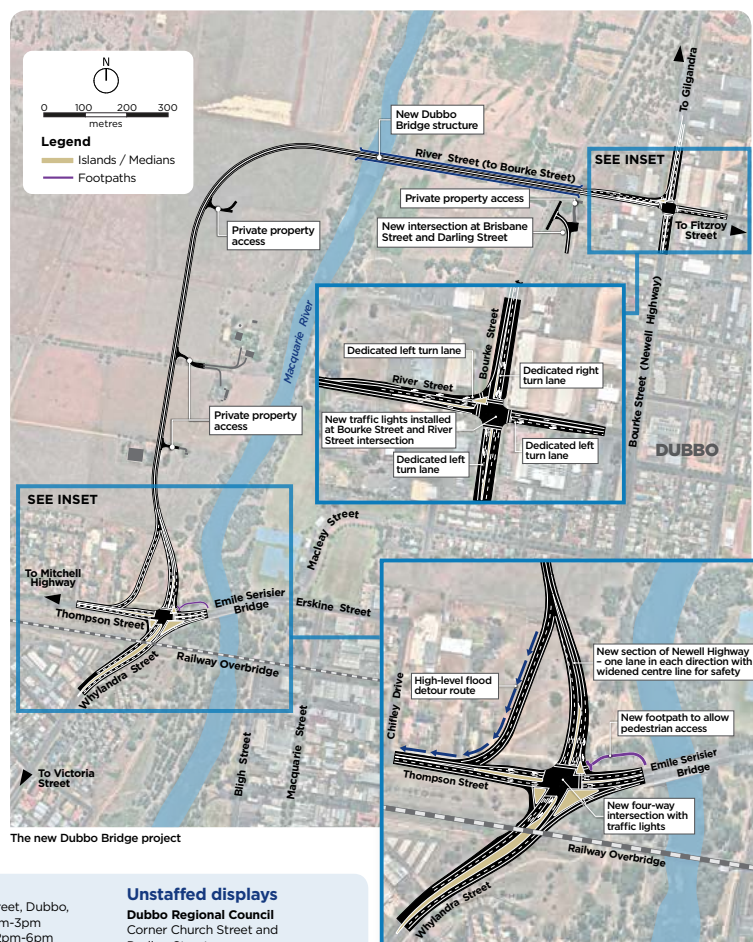
- New and upgraded intersections at Thompson Street, Whylandra Street, and the Newell Highway
- Realign the Newell Highway with new separated lanes north of Whylandra Street
- Upgrade the intersection at Bourke Street and River Street.

What is happening?

Roads and Maritime has developed a concept design and environmental assessment of the proposed New Dubbo Bridge. The concept design and REF will be on display from **Monday 27 May 2019 to Friday 28 June 2019**.

Review of Environmental Factors

The Review of Environmental Factors (REF) assesses the potential social and environmental impacts of the project and identifies ways to minimise these impacts.



The new Dubbo Bridge project

Drop in sessions

We recognise the importance of community feedback and are inviting the community to have its say on the design of the New Dubbo Bridge and the environmental assessments. We are also inviting you to view the proposed designs for the Newell Highway and Mitchell Highway intersection upgrade and the Mitchell Highway (Cobra Street) and Fitzroy Street intersection upgrade at the following locations:

Shopfront open

2/163 Macquarie Street, Dubbo,
Tuesday 28 May, 9am-3pm
Thursday 30 May, 12pm-6pm
Wednesday 5 June, 9am-3pm
Thursday 13 June, 9am-3pm
Wednesday 19 June, 11am-5pm
Wednesday 26 June, 9am-3pm
Dubbo Farmers Market
Corner Macquarie Street and Newell Highway, Dubbo
Saturday 1 June, 8am-12pm
Orana Mall Stall (in front of Big W)
Windsor Parade, Dubbo
Thursday 6 June, 4pm-7pm

Unstaffed displays

Dubbo Regional Council
Corner Church Street and Darling Street
Western Plains Cultural Centre
Wingewarra Street
Dubbo Visitor Information Centre
Corner Macquarie Street and Newell Highway
TAFE Western Dubbo College
Myall Street Campus
Macquarie Regional Library
Corner Macquarie Street and Talbragar Street

Contact us:

If you have any questions or would like more information on Dubbo road projects please contact our project team:

- ☎ 1800 803 818 (toll free)
- @ dubboprojects@rms.nsw.gov.au
- 📧 rms.work/dubbo
- ✉ PO Box 36 Dubbo NSW 2830

Building a better Dubbo

RMS 191240



Building a better Dubbo

Road work, that works for you

Newell Highway and Mitchell Highway intersection upgrade

The NSW Government is investing \$20 million to upgrade the Newell Highway and Mitchell Highway intersection to improve safety and efficiency. The roundabout will be removed and replaced with traffic lights to better regulate traffic flow.

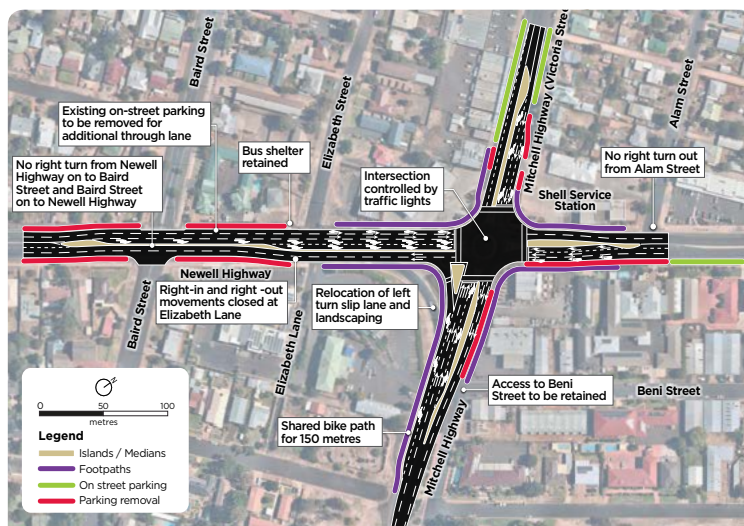
This critical upgrade will reduce congestion at this busy intersection for locals and for traffic travelling through Dubbo.

The Newell Highway and Mitchell Highway are part of the National Land Transport Network - an essential link for businesses and industries connecting major cities and regions. These routes are a vital part of the road network through Dubbo and the surrounding region.

Project features

The Newell Highway and Mitchell Highway intersection upgrade includes the following features:

- Traffic lights will replace the existing intersection roundabout
- New pedestrian crossings on all four sides of the intersection, with foot ramps to improve wheelchair and pram access
- Intersection widening to allow for increasing traffic volumes
- Additional merge lane that minimises parking loss at Victoria Street shops
- Relocation of underground utilities and overhead power
- Safer turn paths for road trains (up to 36.5m long)
- New stormwater system to improve drainage in a high rainfall event



The proposed Newell Highway and Mitchell Highway intersection upgrade



Artist's impression of the Newell Highway and Mitchell Highway intersection



The existing intersection

Drop in sessions

We recognise the importance of community feedback and are inviting the community to have its say on the design of the New Dubbo Bridge and the environmental assessments. We are also inviting you to view the proposed designs for the Newell Highway and Mitchell Highway intersection upgrade and the Mitchell Highway (Cobra Street) and Fitzroy Street intersection upgrade at the following locations:

Shopfront open

2/163 Macquarie Street, Dubbo,
Tuesday 28 May, 9am-3pm
Thursday 30 May, 12pm-6pm
Wednesday 5 June, 9am-3pm
Thursday 13 June, 9am-3pm
Wednesday 19 June, 11am-5pm
Wednesday 26 June, 9am-3pm
Dubbo Farmers Market
Corner Macquarie Street and Newell Highway, Dubbo
Saturday 1 June, 8am-12pm
Orana Mall Stall (in front of Big W)
Windsor Parade, Dubbo
Thursday 6 June, 4pm-7pm

Unstaffed displays

Dubbo Regional Council
Corner Church Street and Darling Street
Western Plains Cultural Centre
Wingewarra Street
Dubbo Visitor Information Centre
Corner Macquarie Street and Newell Highway
TAFE Western Dubbo College
Myall Street Campus
Macquarie Regional Library
Corner Macquarie Street and Talbragar Street

Contact us:

If you have any questions or would like more information on Dubbo road projects please contact our project team:

- ☎ 1800 803 818 (toll free)
- @ dubboprojects@rms.nsw.gov.au
- 📧 rms.work/dubbo
- ✉ PO Box 36 Dubbo NSW 2830

Building a better Dubbo

Building a better Dubbo

Road work, that works for you

Mitchell Highway (Cobra Street) and Fitzroy Street intersection upgrade

The NSW Government is investing \$14 million to upgrade the Mitchell Highway (Cobra Street) and Fitzroy Street intersection to improve safety and efficiency.

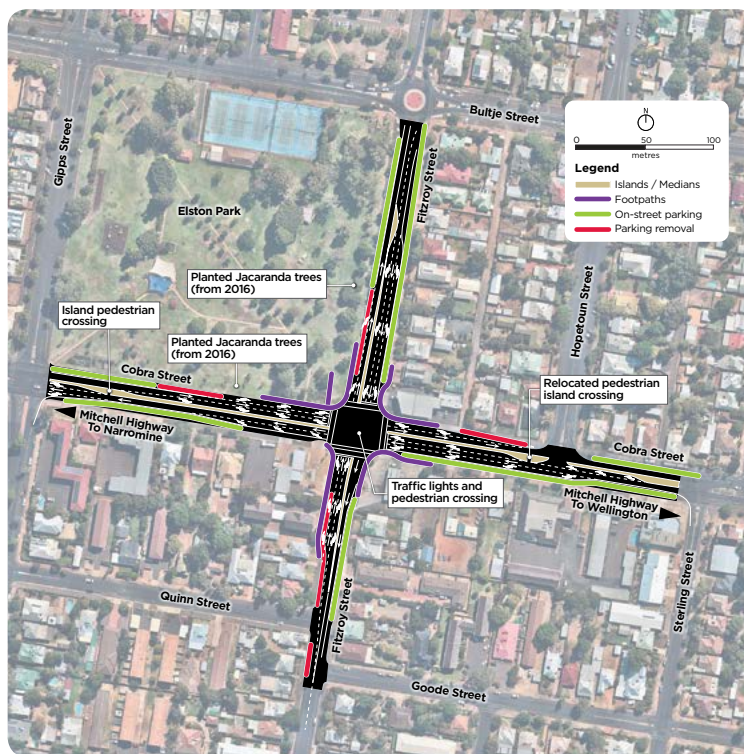
The roundabout at the intersection will be replaced with traffic lights to improve road safety and traffic efficiency. This route is a vital part of the road network through Dubbo and the surrounding region.

The upgrade will reduce congestion for highway and local traffic, particularly during peak hours.

Project features

The Mitchell Highway (Cobra Street) and Fitzroy Street intersection upgrade includes the following features:

- Traffic lights will replace the existing roundabout
- New pedestrian crossings on all four sides of the intersection, with foot ramps to improve wheelchair and pram access
- Widened intersection to improve traffic flow
- Relocating some underground service utilities and overhead power
- Improvements to street lighting
- Improvements to road quality



The proposed Mitchell Highway (Cobra Street) and Fitzroy Street intersection upgrade

Drop in sessions

We recognise the importance of community feedback and are inviting the community to have its say on the design of the New Dubbo Bridge and the environmental assessments. We are also inviting you to view the proposed designs for the Newell Highway and Mitchell Highway intersection upgrade and the Mitchell Highway (Cobra Street) and Fitzroy Street intersection upgrade at the following locations:

Shopfront open

2/163 Macquarie Street, Dubbo,
Tuesday 28 May, 9am-3pm
Thursday 30 May, 12pm-6pm
Wednesday 5 June, 9am-3pm
Thursday 13 June, 9am-3pm
Wednesday 19 June, 11am-5pm
Wednesday 26 June, 9am-3pm
Dubbo Farmers Market
Corner Macquarie Street and Newell Highway, Dubbo
Saturday 1 June, 8am-12pm
Orana Mall Stall (in front of Big W)
Windsor Parade, Dubbo
Thursday 6 June, 4pm-7pm

Unstaffed displays

Dubbo Regional Council
Corner Church Street and Darling Street
Western Plains Cultural Centre
Wingewarra Street
Dubbo Visitor Information Centre
Corner Macquarie Street and Newell Highway
TAFE Western Dubbo College
Myall Street Campus
Macquarie Regional Library
Corner Macquarie Street and Talbragar Street

Contact us:

If you have any questions or would like more information on Dubbo road projects please contact our project team:

☎ 1800 803 818 (toll free)
@ dubboprojects@rms.nsw.gov.au
🌐 rms.work/dubbo
✉ PO Box 36 Dubbo NSW 2830

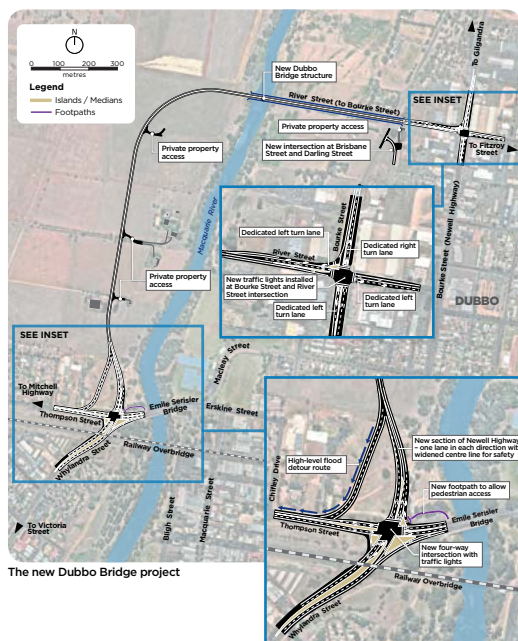
Building a better Dubbo

The map illustrates the proposed infrastructure changes at the intersection of Mitchell Highway and Coburg Street. Key features include:

- Streets:** Gipps Street, Bulbin Street, Hopkinson Street, Coburg Street, Mitchell Highway, Quillon Street, Goode Street, and Spring Street.
- Landmarks:** Elston Park.
- Project Features:**
 - Planted Jacaranda trees (from 2016)
 - Island pedestrian crossing
 - Relocated pedestrian island crossing
 - Traffic lights and pedestrian crossing
 - Parking removal
- Legend:**
 - Islands / Medians (Yellow line)
 - Footpaths (Purple line)
 - On-street parking (Green line)
 - Parking removal (Red line)
- Scale:** 0 to 100 metres.

1800 803 818 (toll free)
dubboprojects@rms.nsw.gov.au
rms.work/dubbo
PO Box 36 Dubbo NSW 2830

**Have
your
say**



The new Dubbo Bridge project

Building a better Dubbo

Building a better Dubbo

Road work, that works for you

The NSW Government is investing \$195 million in five road projects to build a better Dubbo. We are working to cut down your travel time, make your roads safer and ease congestion in and around Dubbo.



Contact us: If you have any questions or would like more information on Dubbo road projects please contact our project team:
 1800 803 818 (toll free) @ dubboprojects@rms.nsw.gov.au rms.work/dubbo PO Box 36 Dubbo NSW 2830

Building a better Dubbo

RMS 191237

Appendices continued

Appendix M – Facebook posts



NSW Roads
20 May 2019 · 🌐

Sign up for information and updates on how the roadworks in Dubbo will benefit you.



RMS.NSW.GOV.AU

We're building a better Dubbo.
Building a better Dubbo

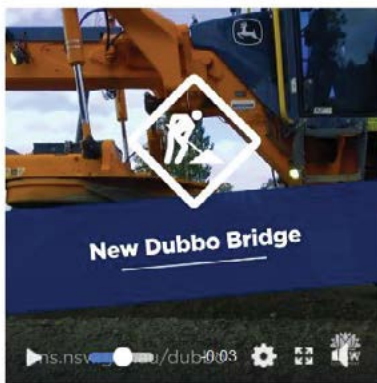
Learn More

Like Comment Share

NSW Roads
Written by Atomic212 · 21 May 2019 · 🌐

⚠️ Dubbo Residents ⚠️

Scroll across to see where local works are improving the area.




New Dubbo Bridge

Starting late 2021.

Sign up for information.

Learn More



Newell/Mitchell Intersection


Starting early-mid 2020.

Sign up for information.

NSW Roads
21 May 2019 · 🌐

⚠️ Are you ready for Dubbo's road works? ⚠️

We're building now, for a better Dubbo tomorrow.



We're rolling out five much needed projects.





We're building a better Dubbo.

00:38

RMS.NSW.GOV.AU

We're building a better Dubbo.
Sign up for information.

Learn More

 1800 803 818 (toll free)
 dubboprojects@rms.nsw.gov.au
 nswroads.work/dubbo
 PO Box 36 Dubbo NSW 2830

February 2020

20.014

ISBN: 978-1-922338-30-3

Building a better Dubbo 2019 Community Consultation Report

