

Elizabeth Drive upgrade

Community Consultation Report

Transport for NSW | March 2020



THIS PAGE LEFT INTENTIONALLY BLANK



Executive summary

Elizabeth Drive is a major east-west corridor between the Liverpool region and the suburbs of Western Sydney.

Transport for NSW is proposing to upgrade Elizabeth Drive between the M7 Motorway and The Northern Road from a two-lane road, to a four-lane road (two lanes in each direction) with provision of a central median to allow for widening to six lanes in the future.

Future projected and planned growth in the region is expected with the development of the Western Sydney International (Nancy-Bird Walton) Airport. This will see an expansion of industrial and commercial precincts associated with the development of the Western Sydney Aerotropolis and related planned land releases for residential precincts and employment zones in the area. This will lead to a need for increased capacity on Elizabeth Drive.

The Elizabeth Drive project was announced to the community in November 2018 and is presently in the strategic design phase. Elizabeth Drive is planned as a movement corridor that performs an important role in the transport network supporting the South West Growth Area, the Western Parkland City and the Western Sydney International (Nancy-Bird Walton) Airport.

Transport has also recognised that there is a need for the provision of pedestrian, cycling and bus stop infrastructure along Elizabeth Drive as there is currently minimal infrastructure to support these customer groups.

An access strategy for the proposed upgrade was developed and exhibited for consultation in June 2019. Information sessions were held at Kemps Creek Public School to give the community an opportunity to ask questions about the project and provide feedback. Two community consultation sessions were held on 19 and 22 June with over sixty people attending. The features of the access strategy include:

- two lanes in each direction with wide central median between the M7 Motorway and The Northern Road – 14 kilometre length
- provision for a future third lane in each direction
- pedestrian, cycling and bus stop infrastructure along the length of Elizabeth Drive to promote active transport
- traffic signals at a number of intersections to improve safety and increase journey time reliability:
 - new intersection of Elizabeth Drive and The Northern road, delivered as part of the Northern Road upgrade
 - proposed new traffic light intersection and realignment of Adams Road and/or Luddenham Road
 - proposed new traffic light intersection between Badgerys Creek Road and Lawson Road
 - proposed new traffic light intersection at Martin Road
 - proposed new traffic light intersection at Western Road
 - proposed new traffic light intersection and realignment of Devonshire Road and/or Salisbury Avenue
 - provision for a future grade separated interchange of the M12, Devonshire Road and realigned Mamre Road
 - proposed new traffic light intersection at Mamre Road
 - potential new traffic light intersection (subject to further investigation) at Range Road
 - proposed new traffic light intersection at Duff Road
 - potential new traffic light intersection (subject to further investigation) at Cecil Road
- intersections on Elizabeth Drive without traffic lights would be left in, left out access only.

Transport received 43 submissions in response to the display of the access strategy. The top issues identified during consultation included the need for additional traffic light intersections, concerns about

future traffic congestion as well as concerns about impact to property and questions about the timing and scope of the project.

The feedback received will be considered in the decision making process, and our responses to the feedback are contained in this report. The feedback will assist in the development of the concept design which will be the next phase of the project.

Contents

Elizabeth Drive upgrade	1
Community Consultation Report.....	1
Executive summary	3
Contents.....	5
1 Proposal.....	6
1.1 Background.....	6
1.2 Access Strategy.....	7
2 Consultation approach.....	9
2.1 Consultation objectives	9
2.2 Values.....	9
2.3 Method of Consultation	9
2.4 Consultation response summary.....	12
2.5 Issues and way forward	13
3 Appendix A – Newspaper advertisements	20
4 Appendix B – Community update newsletter	21
5 Appendix C – Community update distribution map	22
6 Appendix D – Webpage.....	23

1 Proposal

1.1 Background

Elizabeth Drive is the main east-west corridor between Liverpool and surrounding suburbs. Elizabeth Drive extends from the M7 Motorway to The Northern Road (**Figure 1**). It is approximately 14km in length and is mainly a two-lane undivided road, with no footpaths or median. Elizabeth Drive has a sign posted speed limit of 80km/h except through the village of Kemps Creek where the speed is signposted at 60km/h.

The surrounding land use is rural and rural industrial. Elizabeth Drive services a combination of passenger and heavy vehicle traffic. The section between Mamre Road and the M7 Motorway currently experiences higher traffic volumes due to traffic moving between St Marys and the surrounding suburbs, the Western Sydney Employment Area and the M7 Motorway.

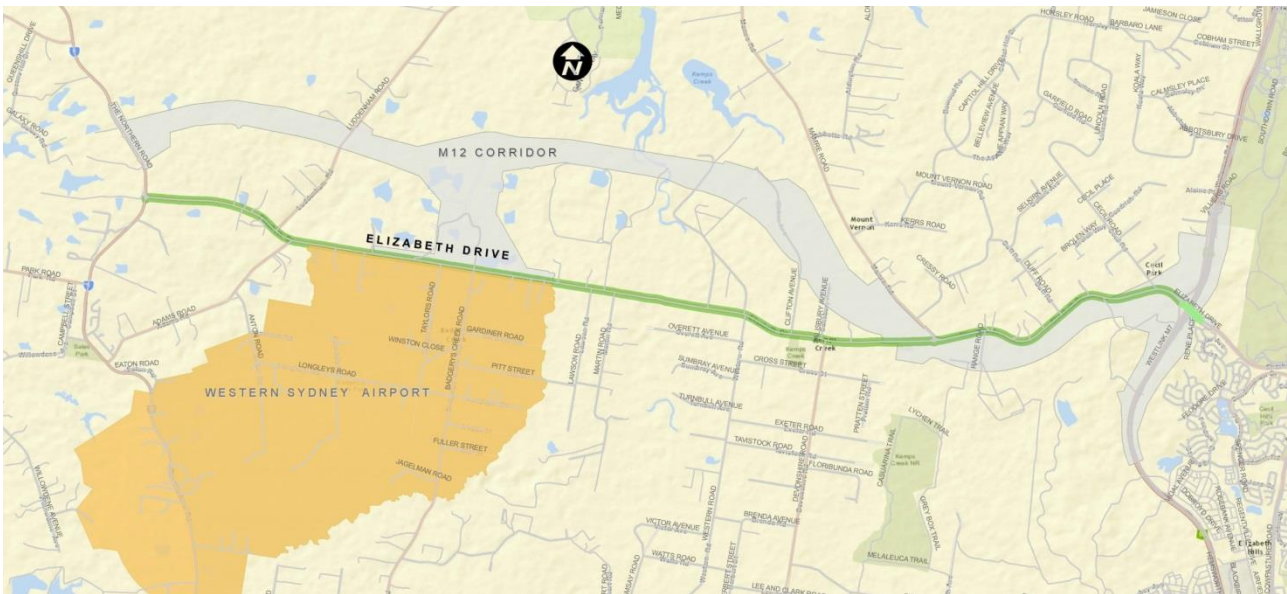


Figure 1 - Location of Elizabeth Drive

Future projected and planned growth in the region is expected with the development of the Western Sydney International Airport. This will see an expansion of industrial and commercial precincts associated with the development of the Western Sydney Aerotropolis and related planned land releases for residential precincts and employment zones in the area. This will lead to a need for increased capacity on Elizabeth Drive.

The implications of not increasing the capacity of Elizabeth Drive would be increased congestion, increased travel times and road safety implications. The preservation of a corridor for an upgraded Elizabeth Drive would allow for ongoing upgrades, as required over time based on increased usage, and address emerging safety and access requirements.

Early analysis indicates the need to upgrade Elizabeth Drive from a two-lane road to a four-lane road with provision to allow an upgrade to six lanes in the future. The installation of traffic signals at a number of intersections along Elizabeth Drive will also be undertaken to reduce queueing, improve safety and allowing for access to future development along the corridor. There is also a need for pedestrian, cycling and bus stop infrastructure along Elizabeth Drive as there is currently minimal facilities for supporting these customer groups.

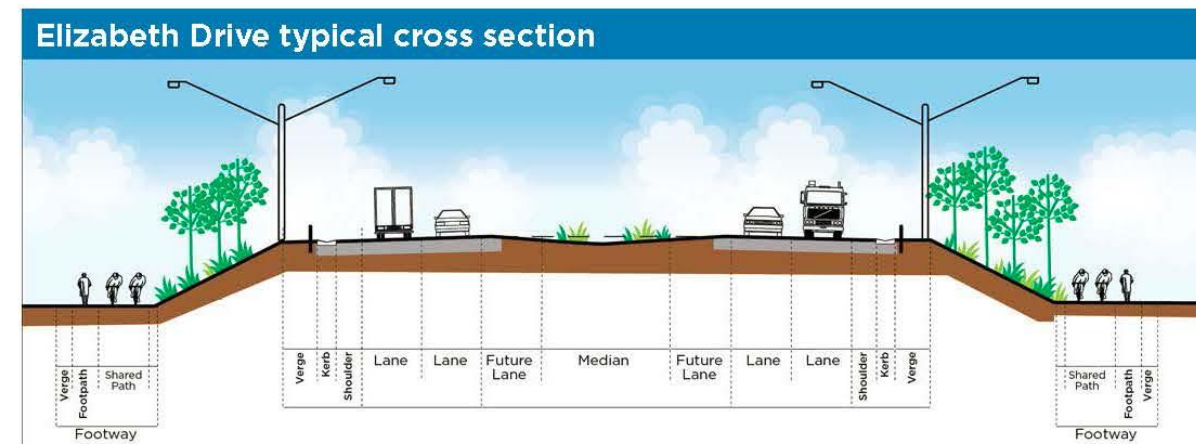
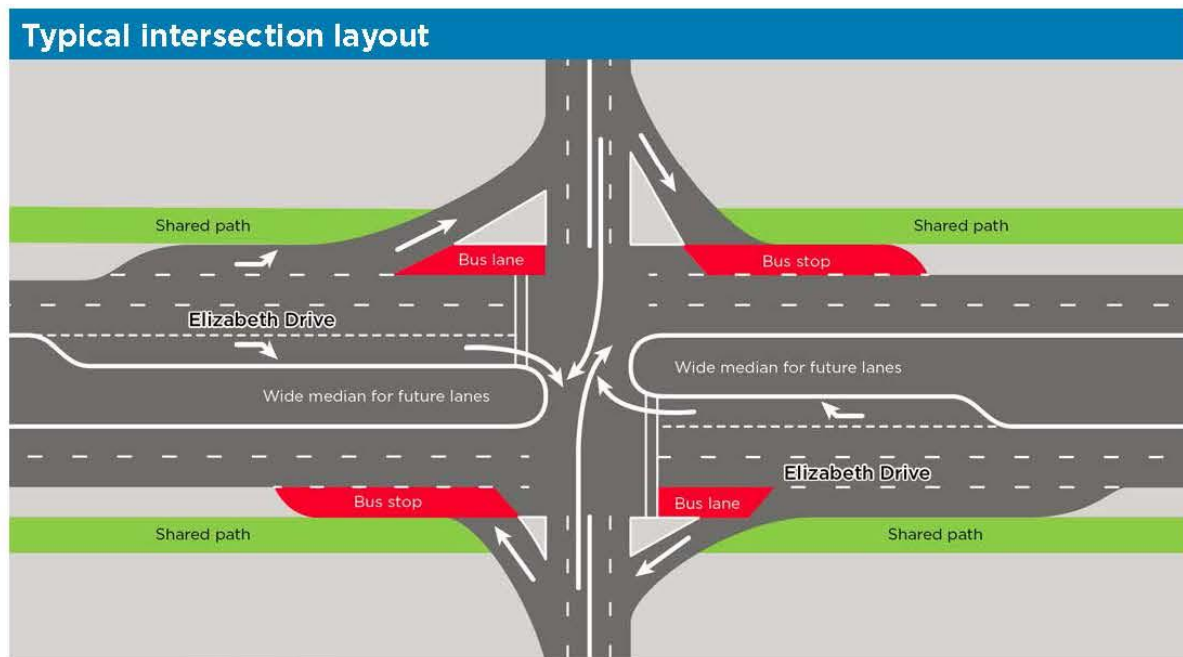
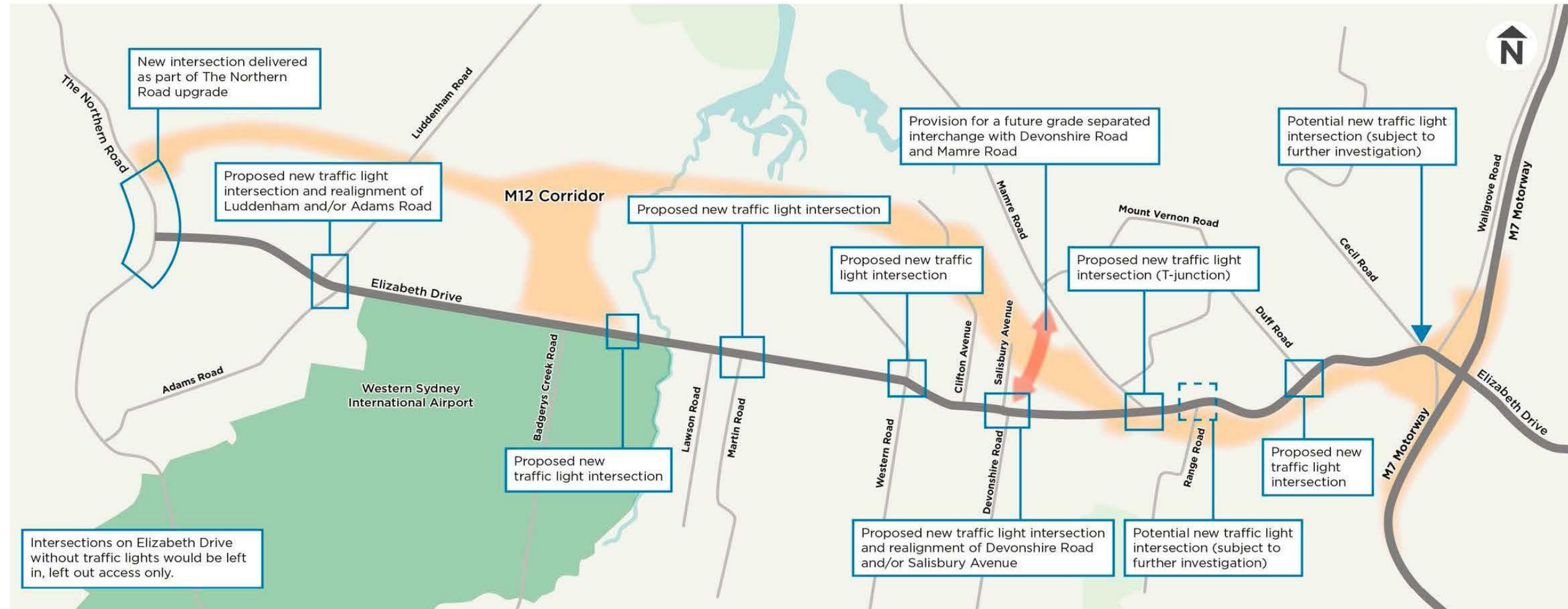
1.2 Access Strategy

A Community Update was prepared that provided details on the project for the community and stakeholders in June 2019. The features of the project provided included:

- two lanes in each direction with a wide central median between the M7 Motorway and The Northern Road – 14 kilometres in length
- provision for a future third lane in each direction
- pedestrian, cycling and bus stop infrastructure along the length of Elizabeth Drive to promote active transport
- traffic signals at a number of intersections to improve safety and increase journey time reliability:
 - new intersection at Elizabeth Drive and The Northern Road, delivered as part of the Northern Road upgrade
 - proposed new traffic light intersection and realignment of Adams Road and/or Luddenham Road
 - proposed new traffic light intersection between Badgerys Creek Road and Lawson Road
 - proposed new traffic light intersection at Martin Road
 - proposed new traffic light intersection at Western Road
 - proposed new traffic light intersection and realignment of Devonshire Road and/or Salisbury Avenue
 - provision for a future grade separated interchange of the M12, Devonshire Road and realigned Mamre Road
 - proposed new traffic light intersection at Mamre Road
 - potential new traffic light intersection (subject to further investigation) at Range Road
 - proposed new traffic light intersection at Duff Road
 - potential new traffic light intersection (subject to further investigation) at Cecil Road
- intersections on Elizabeth Drive without traffic lights would be left in, left out access only.

The locations of the proposed intersections are illustrated in **Figure 2**.

Elizabeth Drive



The proposal includes a central median for improved safety by separating traffic in each direction. Right turns into and out of Elizabeth Drive would be restricted to intersections with traffic lights to improve safety. Properties will maintain their existing access onto

Elizabeth Drive. However, residents and businesses would no longer be able to turn right into or out of their properties. Appropriate u-turn facilities will be provided on side streets of traffic light intersections.

Figure 2 - Proposed intersection upgrades along Elizabeth Drive

2 Consultation approach

2.1 Consultation objectives

The access strategy for the Elizabeth Drive upgrade was released for consultation on 10 June 2019. Two community consultation sessions were held for the community to provide their feedback on Wednesday 19 June and Saturday 22 June at Kemps Creek Public School.

The purpose of the community consultation was to:

- inform community members and stakeholders about the access strategy for the Elizabeth Drive upgrade
- provide information about next steps in the project
- seek comment, feedback, ideas and suggestions from the community to be considered prior to reservation of the road corridor
- provide an opportunity for the community to meet with the project team to ask questions and provide feedback on the preferred option
- build a database of community members and stakeholders for Transport to engage with through the development of the Elizabeth Drive upgrade.

2.2 Values

The following values underpin our decisions and behaviours when working with customers, colleagues, stakeholders and partners.

Customer focus - We place the customer at the centre of everything we do

Collaboration - We value each other and create better outcomes by working together

Solutions - We deliver sustainable and innovative solutions to NSW's transport needs

Integrity - We take responsibility and communicate openly

Safety - We prioritise safety for our people and our customers.

2.3 Method of Consultation

Community consultation sessions and activities give members of the community an opportunity to learn more about the Elizabeth Drive upgrade, meet the project team, and provide comments on the road upgrade. The list of consultation activities implemented is found in Table 2-1.

Community members are encouraged to provide feedback, leave comments and ask questions of the project team. Alternate methods are also provided to community members to contact the project team via email, by phone or post:

Email elizabethdrive@rms.nsw.gov.au

Phone 1800 865 303

Post Elizabeth Drive upgrade, PO Box 973 Parramatta NSW 2124

The deadline for providing formal submissions in response to the community update was extended to Wednesday 10 July 2019.

Table 2-1: Consultation activities

Tool/activity	Reach	Detail
Newspaper advertisements (Appendix A)		One newspaper advertisement appeared in the local newspaper, the Western Weekender on 14 June to raise awareness of the consultation and information sessions.
Social media	48.5k	Four social media posts were published on the Roads NSW Facebook page to promote the community consultation sessions.
Community update (Appendix B)	5,868	A community update newsletter was distributed via a letterbox drop to 5,868 local properties. Refer to Appendix C for a map of the distribution area.
Letter to property owners	93	93 letters were sent to individual property owners not living in the properties to advise them about the community update
Webpage (Appendix D)	501 page views	The project webpage was updated on 13 June 2019 with the latest project information including the community update and how to submit feedback. www.rms.nsw.gov.au/projects/sydney-west/elizabeth-drive-upgrade
Community information sessions		Two community information sessions were held in Jun 2019 as per the details below: Wednesday 19 June, 5:30 – 8:30 pm Kemps Creek Public School 100 Cross St, Kemps Creek Saturday 22 June, 10 am – 1 pm Kemps Creek Public School 100 Cross St, Kemps Creek A total of 67 people were recorded as attending the community information sessions: <ul style="list-style-type: none">• 48 attendees for Wednesday 19 June• 19 attendees for Saturday 22 June However, not all attendees signed in individually.

2.4 Consultation response summary

A total of 43 completed feedback forms were received during the consultation period.

The top issues identified through submissions during the consultation on the access strategy included the need for additional traffic light intersections, concerns about future traffic congestion as well as concerns about impact to property and questions about the timing and scope of the project.

These issues and the way forward are shown in Table 2-2.

2.5 Issues and way forward

Table 2-2 details the issues received during the consultation period and proposes the way forward.

Table 2-2: Issues and way forward

Issue category	Sub-issue	Issues raised	Way forward
Access Strategy	Left-in and left-out at Clifton Avenue	This intersection should be signalised to support existing businesses, residents and future land uses.	The project team will review the strategic design to seek improved access for residents and business owners utilising Clifton Avenue in line with future development strategies.
	Elizabeth Drive and Devonshire Road intersection	Accelerate the upgrade and signalisation of this intersection to improve safety.	There is currently no funding available to accelerate upgrades to provide traffic lights at intersections. Transport will seek funding for early provision of intersection works to improve access and safety.
		Implement a temporary roundabout to facilitate the safety of the intersection.	Roundabouts are not efficient when traffic along the approaching roads are not balanced. A roundabout may impede the heavy traffic movement on Elizabeth Drive and could lead to traffic incidents as drivers on minor roads try to enter the roundabout.
	Elizabeth Drive and Western Road intersection	Accelerate the upgrade and signalisation of this intersection to improve safety.	There is currently no funding available to accelerate upgrades to provide traffic lights at intersections. Transport will seek funding for early provision of intersection works to improve access and safety.
		Implement a temporary roundabout to facilitate the safety of the intersection.	Roundabouts are not efficient when traffic along the approaching roads are not balanced. A roundabout may impede the heavy traffic movement on Elizabeth Drive and could lead to traffic

Issue category	Sub-issue	Issues raised	Way forward
			<p>incidents as drivers on minor roads try to enter the roundabout.</p> <p>A northern leg is proposed at this intersection to improve north-south road connections. This northern approach to the intersection will be included in the public road corridor. Details of the width and extent of the design will be investigated during the next stage of the project.</p> <p>The Western Planning Partnership, a collaboration between Federal, State and Local Government, will provide details at a future time on the proposed local road network in the areas north and south of Elizabeth Drive.</p>
	Emergency Services Access	Access onto Elizabeth Drive from the rural fire station for emergency response needs to be considered.	Emergency services access will be considered further in the planning process.
	Connection between M12 and Elizabeth Drive at the entry into the Western Sydney International Airport site	Connection between the M12 and Elizabeth Drive	Connections between the M12 and Elizabeth Drive are not currently planned as part of the M12 motorway or Elizabeth Drive upgrade projects. Connections at this location are not being progressed, however alternate future connection locations are being investigated. Future connections between Elizabeth Drive and the M12 would utilise additional links in the arterial network and facilitate trips to wider destinations. These connections would be planned to better serve the growing population and industry in the region.
	Access from Elizabeth Drive to Western Sydney International Airport	Connection between Elizabeth Drive and the airport.	Access to the airport from Elizabeth Drive will be provided by the proposed intersection at the realigned Badgerys Creek Road. Additional access points to the airport are under consideration and being investigated by the project team in conjunction with

Issue category	Sub-issue	Issues raised	Way forward
			Western Sydney Airport Corporation.
	Access across Elizabeth Drive	What type and level of access will be provided between either side of Elizabeth Drive.	<p>North-south road connections across Elizabeth Drive will only be provided at traffic light intersections. All other intersections would be restricted to left in / left out.</p> <p>The Western Planning Partnership, a collaboration between Federal, State and Local Government, will provide details at a future time on the proposed local road network in the areas north and south of Elizabeth Drive.</p>
	Traffic lights	The amount of traffic lights proposed will increase the traffic congestion along Elizabeth Drive.	The provision of lights provides safe and efficient access onto Elizabeth Drive from the surrounding road network. Transport will continue to undertake analysis and modelling to assess impacts of the upgrade on travel times, safety and reliability.
Request for additional traffic light intersections to support planned redevelopment of land adjacent to Elizabeth Drive.		<p>The provision of access for new developments will be considered on a case by case basis under the Transport planning approval process and in conjunction with wider structure planning being undertaken by the Western Planning Partnership.</p> <p>The balance between requests for additional traffic light access and the operational performance of Elizabeth Drive will need to be considered and managed by Transport.</p>	
Traffic light intersection at Cecil Road and Elizabeth Drive to be confirmed.		<p>The proximity of this intersection to the existing traffic light intersection at Wallgrove Road means the operational impacts of new traffic lights will need to be carefully assessed.</p> <p>The project team will undertake analysis and modelling when updated land use assumptions for the Western Parkland City are available to assess the suitability and operational impacts of traffic lights at this intersection.</p>	



Issue category	Sub-issue	Issues raised	Way forward
		Lawson Road to have traffic lights rather than Martin Road.	Lawson Road is closer to the proposed traffic lights at the realigned Badgerys Creek Road making the traffic lights at Lawson Road less desirable. The upgrade of Elizabeth drive will mean sight lines to Martin Road will be improved and meet the standards required for traffic light intersections.
Safety	Reduce the speed near Kemps Creek shops	Access onto Elizabeth Drive is becoming difficult and dangerous with the increasing amount of heavy vehicles using the road.	<p>Safety considerations will be assessed during the project development stage. Transport will be responsible for ongoing monitoring of this issue.</p> <p>The safety concerns raised in relation to the current operating speeds limits and access issues at Mamre Road and Kemps Creek have been referred to the Senior Manager in Network and Safety at Transport.</p>
	Heavy vehicles on Elizabeth Drive	Ban parking along Elizabeth Drive near the Kemps Creek shops as trucks are obstructing vision from people entering and exiting the shops and streets such as Clifton Avenue.	<p>Safety considerations will be assessed during the project development stage. Transport will be responsible for ongoing monitoring of this issue.</p> <p>The safety concerns raised in relation to vehicles parking on Elizabeth Drive at Kemps Creek shops have been referred to the Senior Manager in Network and Safety at Transport.</p>
Information	Information about the project	More information should be available about the project including timeframes, scope and road width.	<p>The consultation sessions in June were held to present the access strategy. This is the first of many opportunities the community will have to engage with the project team and provide feedback.</p> <p>More details about the project will provided at future community engagement sessions as the project progresses to the next stages.</p> <p>Transport will continue to host representatives from other related</p>

Issue category	Sub-issue	Issues raised	Way forward
			projects and agencies at these sessions.
		Funding commitment for construction.	There is currently no funding or timeframe committed for the construction of the Elizabeth Drive upgrade
		Traffic modelling assumptions.	The project will undertake detailed project modelling during the concept phase. This will include the latest land use and trip generation data published by the Department of Planning, Industry and Environment and the Western Planning Partnership for planned growth in the Western Parkland City.
Property	Acquisition	Information on which properties will be impacted needs to become available.	<p>Transport gives careful consideration to road alignment options when widening road corridors. Considerations include constructability, flood prevention, impact to adjoining properties, the number of properties affected and other projects planned in the area.</p> <p>A number of road alignment options are still being investigated with the consideration of using land from both sides of the road corridor. These options will be evaluated in workshops with key stakeholders.</p>
		Federal land should be used instead of private land for the road upgrade.	Transport gives careful consideration to road alignment options when widening road corridors. Provision of federal land for the road upgrade is at the discretion of the Federal Government.

Issue category	Sub-issue	Issues raised	Way forward
Road design	Vehicle size	What design vehicle is being used for the project?	The road design will be based on B-double (26m) sized vehicles to determine intersection designs. Elizabeth Drive is currently a designated B-double route and will continue to be so in the future.
	Median Barrier	Transport should consider the use of median barriers to reduce the cross-sectional width and reduce impacts to adjoining land.	<p>The project team have considered the option of including a barrier to reduce the median width during project development.</p> <p>The preference is not to include barriers and a reserve a wider median as it reduces maintenance requirements and associated safety risks for workers when undertaking maintenance in the median on a high speed road.</p> <p>The wider median also increases safety for road users with a greater separation of opposing traffic flows without obstruction of barriers in the clear zone.</p>
	Congestion	Connectivity to the M7 Motorway should be improved as long queuing is experienced at this intersection.	The Elizabeth Drive project team in conjunction with the M12 project team is examining options for improving the performance of the M7 Motorway with the M12 Motorway and Elizabeth Drive intersection/interchange.
	Speed	What will the proposed speed limit for the road be?	The road is currently being designed for a posted speed limit of 80km/hr. Consideration and review of appropriate speed limits will continue throughout project development.
	Public Transport	The upgraded road design should consider the transport needs of the corridor.	Careful consideration of public transport opportunities along Elizabeth Drive has been given during the planning process. This will be assessed with the future needs of the corridor along with relevant transport projects planned in the area.
Active Transport	Shared bicycle and pedestrian paths	Cyclist needs to be considered including priority for cyclists at road and	Transport promotes safe cycling and would provide a separated shared bicycle and pedestrian path as shown in the cross section

Issue category	Sub-issue	Issues raised	Way forward
		driveway crossings, priority signals for cyclists at traffic signal intersections and a cycle way sheltered from significant flood events	<p>diagram of the upgraded road.</p> <p>The balance of the needs of all road users and wider government policy will be considered during the development of active transport infrastructure for the project.</p>

3 Appendix A – Newspaper advertisement



Roads and Maritime Services

Elizabeth Drive upgrade

Roads and Maritime Services is investigating options to improve Elizabeth Drive between Cecil Hills and Luddenham. An improved Elizabeth Drive would support the new Western Sydney Airport and the Western Parkland City.

We are preparing an access strategy to consider the future needs for the Elizabeth Drive corridor, including public and active transport. The access strategy will outline the proposed upgrades and how motorists and road users would be able to move around and travel on an upgraded Elizabeth Drive.

Community consultation sessions

Community and stakeholder input is key to the access strategy and we are keen to receive local information and feedback to incorporate in the planning process. We invite you to come along and meet the Elizabeth Road upgrade project team and give your feedback at the following sessions:

Wednesday 19 June 2019 from 5:30pm to 8:30pm
Saturday 22 June 2019 from 10am to 1pm

At Kemps Creek Public School, 100 Cross Street, Kemps Creek

If you are unable to attend one of the information sessions, you can provide your feedback until **5pm, Wednesday 10 July 2019**:

Email: elizabethdrive@rms.nsw.gov.au
Mail: Elizabeth Drive upgrade
Roads and Maritime Services
PO Box 973, Parramatta, NSW, 2124
Phone: 1800 865 303

For more information, visit www.rms.nsw.gov.au/elizabethdrive

BLZ_SB0042

4 Appendix B – Community update newsletter



Elizabeth Drive upgrade

Community update

June 2019



Elizabeth Drive at Kemps Creek

The NSW Government is planning for the future with funding allocated to investigate improvements to Elizabeth Drive between the M7 Motorway at Cecil Hills and The Northern Road at Luddenham.

Roads and Maritime Services is investigating options to improve Elizabeth Drive between Cecil Hills and Luddenham. An improved Elizabeth Drive would support the new Western Sydney Airport and the Western Parkland City.

Planning for this project has been accelerated by funding provided as part of Special Infrastructure Contributions managed by the Department of Planning and Environment to help fund the development of key pieces of infrastructure required to support the growing population.

Upcoming community consultation sessions

Roads and Maritime is preparing the access strategy for the Elizabeth Drive upgrade. We invite you to come along and meet the Elizabeth Road upgrade project team and give your feedback. Details about our sessions can be found on the back page of this update.

Key benefits

- Increased road capacity for future growth and development to reduce congestion impacts on the community
- Enhanced traffic safety for road users
- Improved access to the Western Sydney Airport and the Western Sydney Aerotropolis
- Improved freight movement to key commercial centres
- Support for the development of the Western Parkland City.

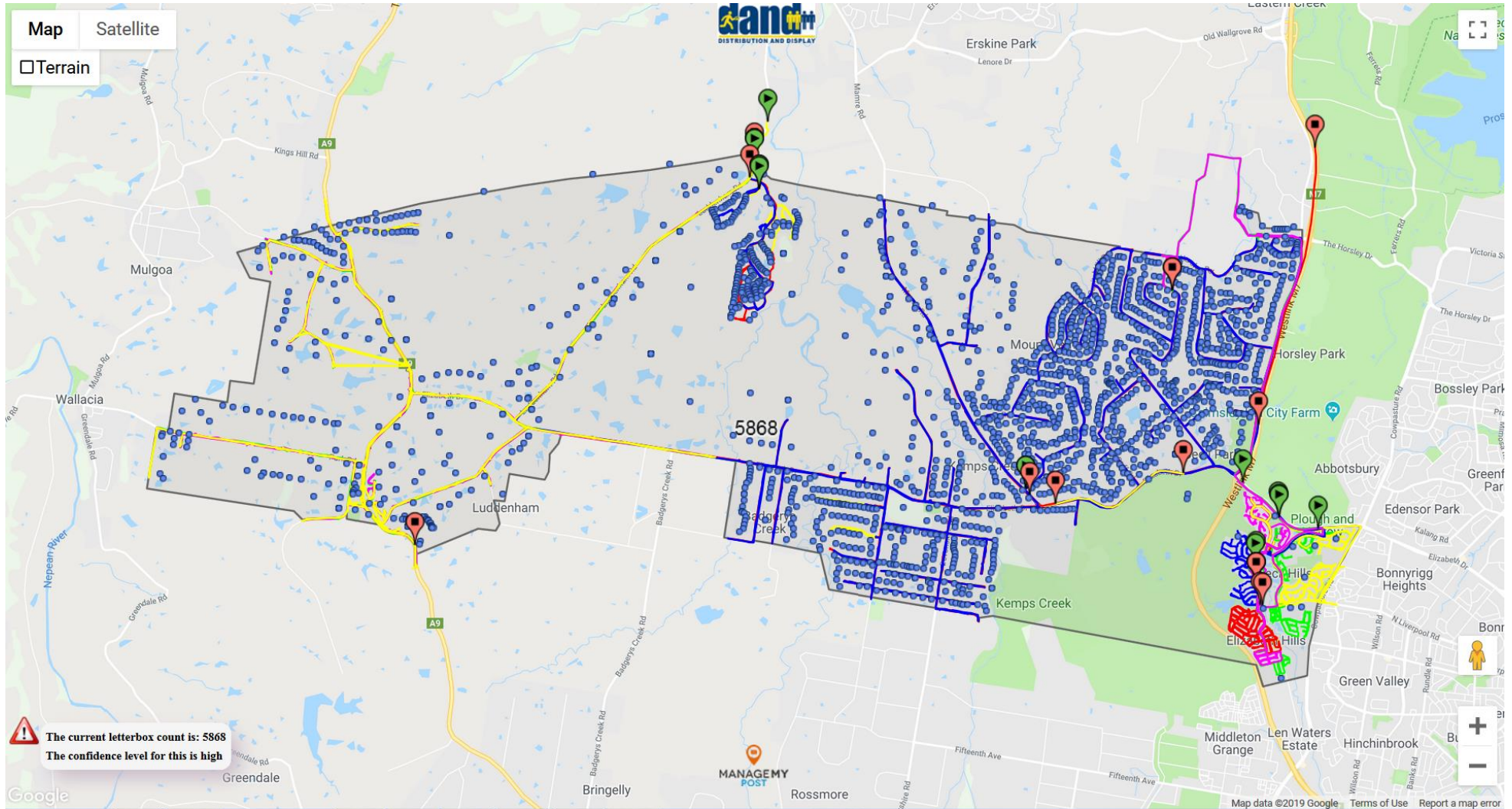
There will be a range of benefits for our customers including safe and reliable journeys to and from the new airport and surrounds.

Preliminary Investigations

Roads and Maritime is starting investigations, including early planning, environmental field investigations, and strategic traffic modelling. These investigations are expected to be completed in 2019.

We are seeking input from the community regarding access and proposed traffic light locations to confirm if the community's views align with our proposal.

5 Appendix C – Community update distribution map




6 Appendix D – Webpage

Service NSW [Live Traffic](#) [Transport Info](#) [Transport for NSW](#) [Registries/Service Centres](#)

NSW GOVERNMENT | Transport Roads & Maritime Services

Search

Roads Maritime Business & Industry Projects Safety About us Contact us



Elizabeth Drive upgrade

Elizabeth Drive upgrade project

The NSW Government is planning for the future with funding allocated to investigate improvements to Elizabeth Drive between the M7 Motorway at Cecil Hills and The Northern Road at Luddenham.

Project information

Background on Elizabeth Drive

Elizabeth Drive is the main east-west corridor between Liverpool and surrounding suburbs. Elizabeth Drive, from the M7 Motorway to Badgers Creek, is approximately 14 kilometres in length and predominantly a two lane undivided road, with no footpaths, no median and a speed limit of 80km/h.

Future projected and planned growth in the region is expected with the development of the Western Sydney International Airport. This will see an expansion of industrial and commercial precincts associated with the development of the Western Sydney Aerotropolis and related planned land releases for residential precincts and employment zones in the area leading to a need for increased capacity on Elizabeth Drive.

Roads and Maritime Services is committed to supporting the delivery of the Western Sydney International Airport and the Western Parkland City. Our planning for the upgrade of Elizabeth Drive will support the projected and planned development in the region.

We also recognise the need for the provision of pedestrian, cycling and bus stop infrastructure along Elizabeth Drive as there is currently minimal infrastructure for supporting these customer groups.

Preliminary investigations

Community and stakeholder engagement

Next steps

Useful links

Project documents

Some documents on this page may not comply with accessibility requirements (WCAG). If you are having trouble

23 | Elizabeth Drive upgrade Community Consultation Report March 2020



rms.work/elizabethdrive



1800 865 303



Elizabeth Drive upgrade

Transport for NSW

PO Box 973, Parramatta NSW 2124

March 2020

20.110

ISBN: 978-1-922338-48-8