

## Traffic changes on Langston Place, Epping from Monday 8 July

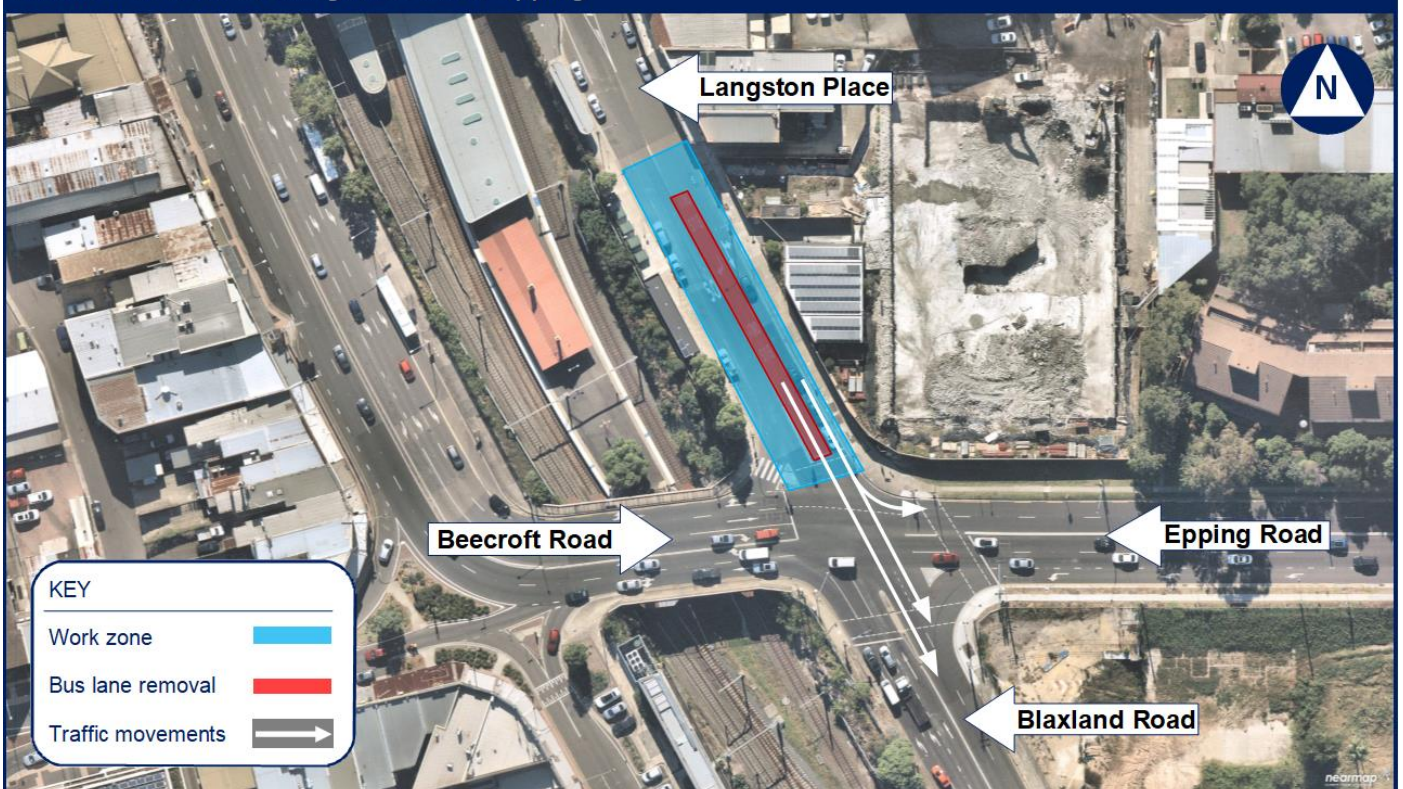
The NSW Government is funding this work through the Housing Acceleration Fund to improve traffic flow, reduce congestion and support population growth in Epping Town Centre.

Roads and Maritime Services will be replacing the right turn bus lane on Langston Place near Epping Road with a through lane for all motorists traveling onto Blaxland Road.

The bus lane on Langston Place was installed in 2018 to accommodate Station Link buses which ran as part of the Sydney Metro project. When Sydney Metro's Northwest line opened in May, commuters started using the metro instead of the Station Link buses and the bus service was stopped.

Because of this change, the dedicated bus lane on Langston Place is no longer needed. We will remove the right turn bus lane on Langston Place and replace it with a through lane for all motorists onto Blaxland Road.

Location of work on Langston Place, Epping



## Our work schedule

We will be on site for **three night shifts** between **Monday 8 July** and **Friday 19 July**, weather permitting.

Our work hours will be between **8pm** and **5am** from **Sunday** to **Friday**.

## Contact

If you have any questions, please contact our delivery partner, DM Roads, on 1800 332 660 or [nsw\\_projects@dmroads.com.au](mailto:nsw_projects@dmroads.com.au).

For more information on our projects, visit [rms.nsw.gov.au](http://rms.nsw.gov.au).

Thank you for your patience during this important work.

## How the work will affect you

Our work may be noisy at times but we will do everything we can to minimise its impact, including completing the noisier tasks by **midnight**.

To minimise disruption to residents, businesses and road users, we will not work more than two nights in any week.

## Traffic changes

There will be temporary traffic changes during our work hours to ensure the work zone is safe.

Please keep to speed limits and follow signs and traffic controllers' directions. For the latest traffic updates, you can call 132 701, visit [livetraffic.com](http://livetraffic.com) or download the Live Traffic NSW App.



## Translating and Interpreting Service

If you need an interpreter, please call TIS National on **131 450** and ask them to call DM Roads on **1800 332 660**.

### Arabic

إذا كنتم بحاجة إلى مترجم، الرجاء الاتصال بخدمة الترجمة الخطية والشفهية (TIS National) على الرقم **131 450**، و الطلب منهم الاتصال بوكالتكم DM Roads على الرقم **1800 332 660**.

### Cantonese

若你需要口譯員，請致電 **131 450** 聯絡翻譯和口譯服務署 (TIS National)，要求他們致電 **1800 332 660** 聯絡 DM Roads.

### Mandarin

如果你需要口译员，请致电 **131 450** 联系翻译和口译服务署 (TIS National)，要求他们致电 **1800 332 660** 联系 DM Roads.

### Greek

Αν χρειάζεστε διερμηνέα, παρακαλείστε να τηλεφωνήσετε στην Υπηρεσία Μετάφρασης και Διερμηνείας (Εθνική Υπηρεσία TIS) στο **131 450** και ζητήστε να τηλεφωνήσουν DM Roads στο **1800 332 660**.

### Russian

Если вам нужен переводчик, то позвоните в Службу письменного и устного перевода (TIS National) по номеру **131 450** и скажите переводчику, что вам нужно позвонить в DM Roads по номеру **1800 332 660**.

### Korean

통역사가 필요하시면 번역통역서비스 (TIS National) 에 **131 450** 로 연락하여 이들에게 **1800 332 660** 번으로 DM Roads 에 전화 하도록 요청하십시오.

### Vietnamese

Nếu cần thông ngôn viên, xin quý vị gọi cho Dịch Vụ Thông Phiên Dịch (TIS Toàn Quốc) qua số **131 450** và nhờ họ gọi cho DM Roads qua số **1800 332 660**.