



Start of work, Lane Cove Road and Buffalo Road Intersection, Ryde

November 2022

The Australian and NSW Governments are investing more than \$400 million to improve safety and reduce crashes on NSW Roads.

Transport for NSW is starting work to lengthen the right turn bay from Lane Cove Road into Buffalo Road, Ryde. The longer turning bay will reduce the risk of rear-end crashes and improve safety for all road users at the intersection.

What are we doing?

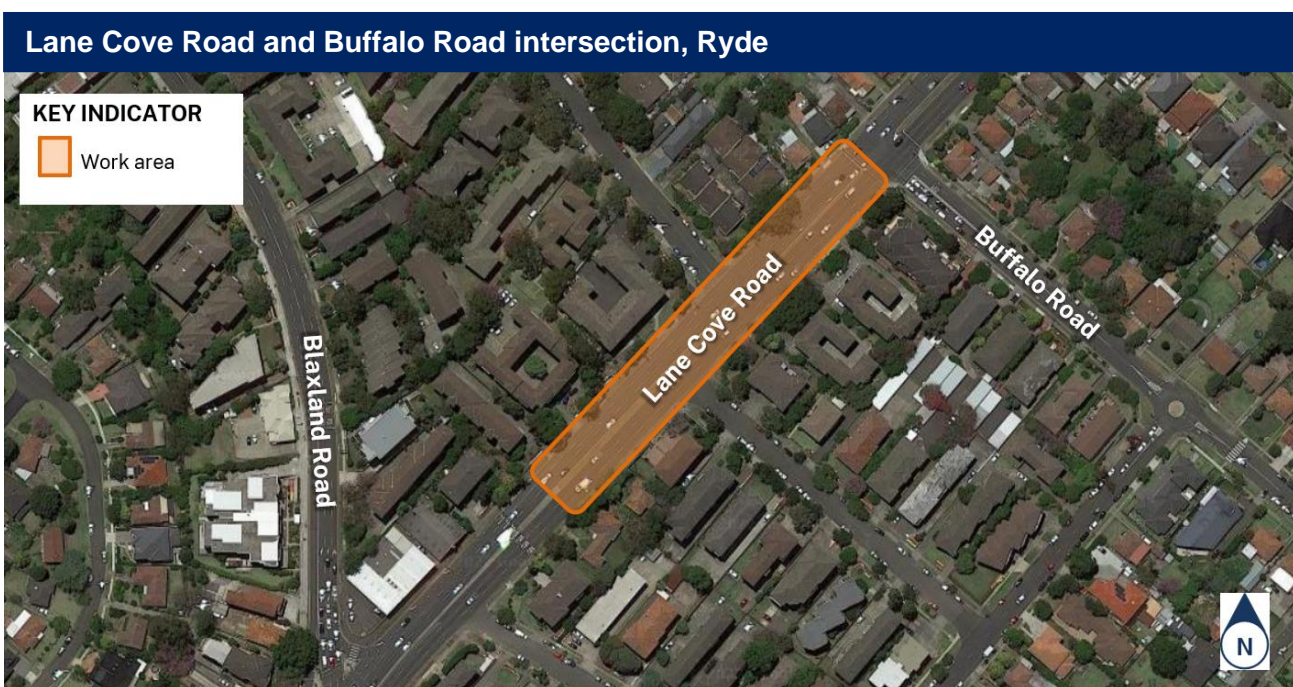
Our upcoming work will include:

- extending the right turn bay on Lane Cove Road by 55 metres
- adjusting lane and median widths
- installing new signage
- completing new line marking
- turfing and landscaping



Transport for NSW acknowledges the Wallumattagal people as the traditional owners and custodians of this land and pays respect to Elders past and present.

The below map shows the location of the work.



Our work schedule

We will be on site for **35 night shifts** until **Tuesday 17 January 2023**.

Our night work hours will be between **Sunday** and **Thursday**, from **8pm** to **5am** the next day.

There will be no work on public holidays and we will not work from **Friday 23 December 2022** to **Saturday 7 January 2023** to help the community enjoy an uninterrupted holiday break.

How will the work affect you?

To subscribe for email or SMS updates email us at macquarie.park@transport.nsw.gov.au.

We need to carry out this work at night to minimise traffic disruption and reduce safety risks to the workers and road users.

Our work may be noisy at times, but we will put in place measures to reduce the disturbance, including turning off vehicles and equipment when not in use, using non-tonal reversing beepers, and completing the noisier tasks before midnight.

We will ensure no more than two nights of noisy works in a row, to reduce the frequency of night noise disturbance for residents.

Traffic changes

There will be some temporary traffic changes during our work hours to ensure the work zone is safe.

Lane closures will be in place and may affect travel times. Please keep to speed limits and follow the direction of traffic controllers and signs. We thank you in advance for your patience during this important work.

For traffic updates, call **132 701**, visit livetraffic.com or download the **Live Traffic NSW App**.

Road Safety Stimulus Project

These improvements are part of more than \$400 Million investment by the Australian and NSW Governments to deliver hundreds of road safety projects across NSW to:



reduce road trauma & save lives



support more than 2,500 direct & indirect jobs as the economy recovers from COVID-19

Construction break over holidays

With the holiday season upon us, to give the community and our workers a break, we will not be doing any work from Friday, 23 December 2022 to Saturday, 7 January 2023, unless we are called in for emergency work.

Contact us

If you have any questions or would like more information on the project, please contact the Lane Cove Road safety improvements team:



1800 317 377



networksafety@transport.nsw.gov.au

SUBSCRIBE

Email us at macquarie.park@transport.nsw.gov.au to join our email distribution list for project updates in the area.



If you need help understanding this information, please contact the Translating and Interpreting Service on **131 450** and ask them to call us on **1800 317 377**.