



Australian Government



BUILDING OUR FUTURE

Macquarie Park Community Update

Transport for NSW | December 2021

The Australian and NSW Governments are investing in Macquarie Park to improve public transport and the road network.

Transport for NSW continues work on Herring Road to install a dedicated northbound bus lane and upgrade three intersections at Epping Road, Ivanhoe Place and Waterloo Road. We plan to complete these improvements in late 2022.

Our work will improve the reliability and efficiency of bus services, reduce travel times, ease congestion, and make it easier to get in, around and from Macquarie Park.

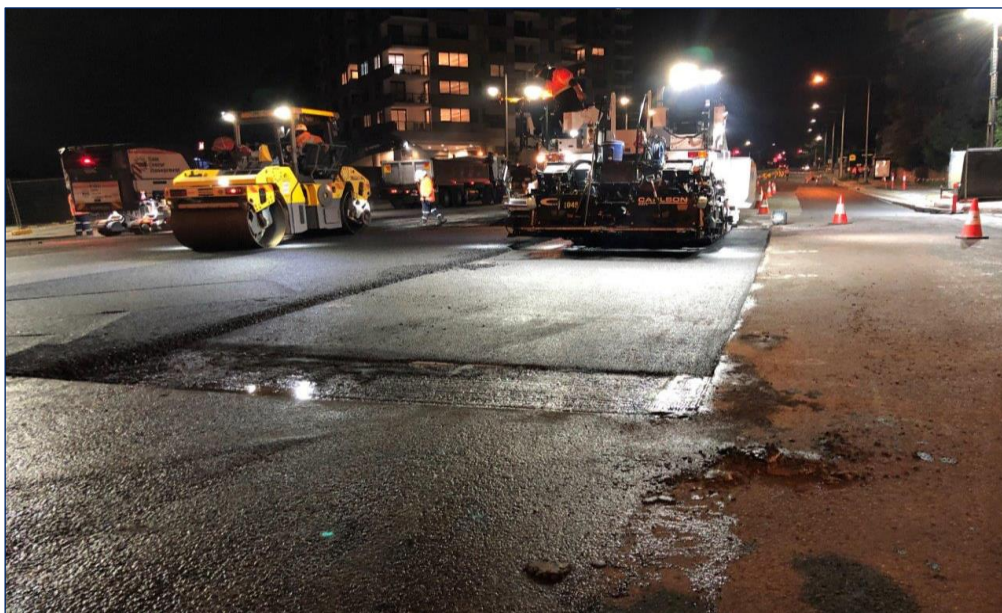
What you will see in this update:

- recently completed work
- upcoming work activities
- our work schedule
- where to keep up to date and how

What have we achieved?

Since our last update we have:

- removed asbestos under the road and footpath and in the verge along Herring Road and Epping Road
- relocated telecommunication and electrical cables as well as stormwater drainage along Herring Road and at the Waterloo Road intersection
- relocated telecommunication cables and worked on traffic signals at the Epping Road and Herring Road intersection
- widened sections of the Epping Road and Herring Road intersection and started to install the new and extended lanes
- resurfaced Herring Road between Epping Road and Windsor Drive
- installed new kerb and driveway entrances along parts of Herring Road.



Resurfacing Herring Road between Epping Road and Windsor Drive

What's next?

From **Sunday 9 January to Thursday 24 March 2022**, along Herring Road we will:

- continue to relocate water and telecommunications, widen the road, build kerb and install new streetlights
- install new drainage between Windsor Drive and Waterloo Road
- begin road resurfacing at the Epping Road and Herring Road intersection
- replace the roundabout with traffic lights at the Herring Road and Ivanhoe Place intersection
- continue to safely remove asbestos if further contaminated material is found
- pour new concrete footpaths and retaining walls on Herring Road and Epping Road
- begin landscaping in completed locations.



Installing drainage before adding the new layers of asphalt creates a stronger, more durable road surface

Our work schedule for 2022

Earlier in 2021, we worked during the day where possible, while the roads had less traffic due to the stay at home orders. Once the NSW Government's restrictions were lifted in October, we returned to working mainly night shifts across all work zones for the safety of our workers, road users and to lessen traffic disruption.

Our night work hours are between **8pm to 5am** on Sunday, Monday, Tuesday, Wednesday and Thursday nights.

Road resurfacing – what is it?

Road resurfacing, or *asphalting*, is necessary when the road is either old and failing or there is an uneven driving surface. Asphalt is a safe, smooth and durable material when laid properly.

You may notice that the new road surface looks a little unfinished. We need to wait until all of the work is completed before placing that final, perfectly smooth layer, also known as the 'wearing course'.

Did you know? Asphalt is a sustainable, environmentally friendly material as it can be reused. When we removed the old asphalt along Herring Road, we recycled some of it for use in the future!

Asbestos removal

During our excavation work in 2021 we found asbestos contaminated material under the road, footpath and in the verge along Herring Road and Epping Road, Macquarie Park. We have since removed this asbestos safely, however more asbestos may be discovered as the project progresses.

To make sure there is no risk to the community and our workers we will continue to:

- implement an asbestos management plan that details safe work practices
- make sure the asbestos does not present an immediate safety risk
- follow all Environment Protection Authority and SafeWork NSW requirements for removal of asbestos material
- maintain strict safety precautions during the removal including workers wearing protective suits and masks and the work area being isolated with safety fences and asbestos warning signs
- send the material to a licensed asbestos disposal facility.

The construction activities map on our webpage nswroads.work/macpark has information about when and where we will remove asbestos.

Traffic lights are coming to Ivanhoe Place

Early next year we will turn on the traffic lights at the intersection of Ivanhoe Place and Herring Road. The new lights and signalised pedestrian crossings will replace the existing roundabout and will help support expected growth in the area.

The upgraded intersection will provide greater amenity to pedestrians by introducing a safer north-south crossing location between Epping Road and Waterloo Road.

Motorists wanting to make a U turn at Ivanhoe Place will soon be able to use a cul-de-sac in Ivanhoe Place instead.

We will use electronic sign boards to help motorists and pedestrians get used to the changes before we switch on the lights next year.



Epping Road and Wicks Road safety improvements

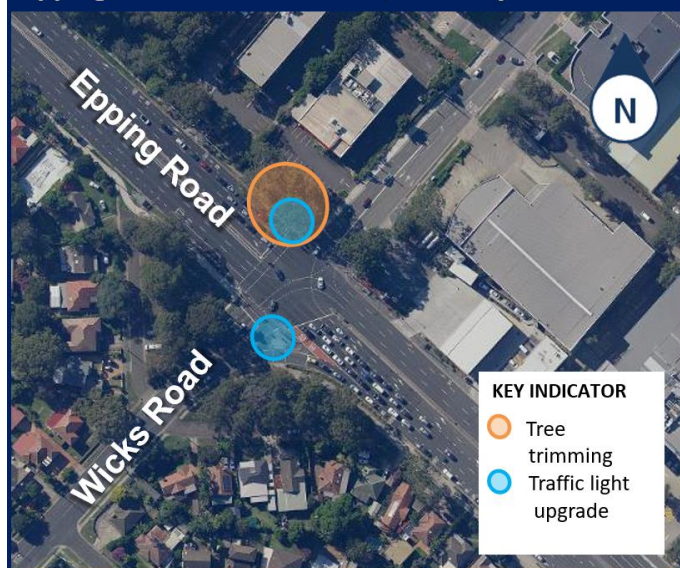
We will improve the visibility of the traffic lights at the Epping Road and Wicks Road intersection, North Ryde with a longer traffic signal pole and trim trees to ensure the traffic lights can be seen clearly.

This work will take **10 night shifts** between **Sunday 16 January** and **Thursday 10 February 2022**. We will work up to five nights a week from Sunday to Thursday. Our work hours will be from **8pm to 5am**.

Questions? Contact our team on 1800 565 902 or Macquarie.Park@transport.nsw.gov.au

This work is part of more than \$400 million investment by the Australian and NSW Governments to deliver hundreds of road safety projects across NSW, designed to reduce road trauma and save lives.

Epping Road and Wicks Road, North Ryde



Traffic changes

Temporary footpath and lane closures will be in place to ensure the work zone is safe. This may affect travel times. Please keep to speed limits and follow signs and traffic controllers' directions.

For the latest traffic updates, you can call 132 701, visit livetraffic.com or check the Live Traffic NSW App.



More efficient travel



Connecting people with places



Safety

Happy holidays

The festive season is upon us, so to give the community and our workers a break we will not be doing any work from **Friday 24 December** to **Saturday 8 January**, unless we get called in for an emergency.

Keeping our community informed

You can read more about our construction activities, duration and impacts on our website at nswroads.work/macpark which we update **monthly**.

We know our work can be frustrating for road users and residents. We thank you for your continued patience and for using caution around the areas of work.

We hope you have a safe and happy holiday season!

Why the focus of buses?

Macquarie Park is growing at almost double the rate of Greater Sydney. In 20 years, over 387,000 daily trips are expected to and from Macquarie Park.

Transport for NSW is focused on making bus services faster and more reliable to reduce travel times, ease congestion and make it easier to get around, to and from Mac Park.

Our improvements will provide seamless interchange and connections between buses and the Macquarie University and Macquarie Park Metro Stations, walking and cycling to deliver a mix of transport options.



Widening work at the Herring Road and Epping Road intersection

Contact us

To ensure we protect public health and safety during the Coronavirus outbreak, we need to change the way we engage with the community. Please be assured we will continue to respond to any questions or concerns you may have about our work.

If you have any questions, please contact our delivery partner Georgiou on:

 1800 956 495
 macquariepark.community@georgiou.com.au
 nswroads.work/macpark



If you need help understanding this information, please contact the Translating and Interpreting Service on 131 450 and ask them to call us on 1800 956 495.

Mandarin

如果你需要口译员, 请致电 **131 450** 联系翻译和口译服务署 (TIS National), 要求他们致电 **1800 956 495** 联系 Georgiou

Cantonese

若你需要口译员, 请致电 **131 450** 聯絡翻譯和口譯服務署 (TIS National), 要求他們致電 **1800 956 495** 聯絡 Georgiou

Korean

통역사가 필요하시면 번역통역서비스 (TIS National)에 **131 450** 으로 연락하여 이들에게 **1800 956 495** 번으로 Georgiou 에 전화하도록 요청하십시오.

December 2021

Privacy Transport for NSW (TfNSWS) is subject to the Privacy and Personal Information Protection Act 1998 ("PIIP Act") which requires that we comply with the Information Privacy Principles set out in the PIIP Act. All information in correspondence is collected for the sole purpose of assisting in the delivery this project. The information received, including names and addresses of respondents, may be published in subsequent documents unless a clear indication is given in the correspondence that all or part of that information is not to be published. Otherwise we will only disclose your personal information, without your consent, if authorised by the law. Your personal information will be held by us at 27 Argyle Street, Parramatta. You have the right to access and correct the information if you believe that it is incorrect.