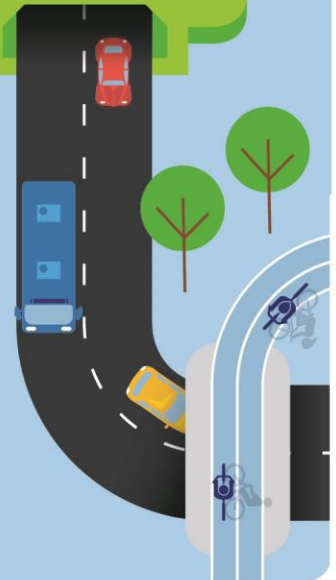


October 2019



F6 Extension Stage 1

Site investigations on Bestic Street, Rockdale from Friday 4 October



The F6 Extension Stage 1 will remove over 2,000 trucks a day from surface roads; returning local streets to local communities.

To help us with our plans, we need to carry out some geotechnical investigations on Bestic Street, Rockdale from Friday 4 October

What does our work involve?

We'll be drilling boreholes in the ground to gather information about the environmental and ground conditions to help us design and build the F6 Extension Stage 1 project. This work will involve an assessment of the site and taking soil samples.

Our work area is shown on the map over the page.

Our work schedule

Work hours are between:

Monday to Friday, 7am and 6pm

We expect the work to take around two weeks to complete, weather permitting.

How will our work affect you?

We will help to reduce noise by using low noise reversing alarms on all machinery and turning off equipment and vehicles when they are not being used.

What does our work involve?

We will be using light vehicles, drilling rigs, scanning equipment, hand tools and installing a monitoring device during our work.

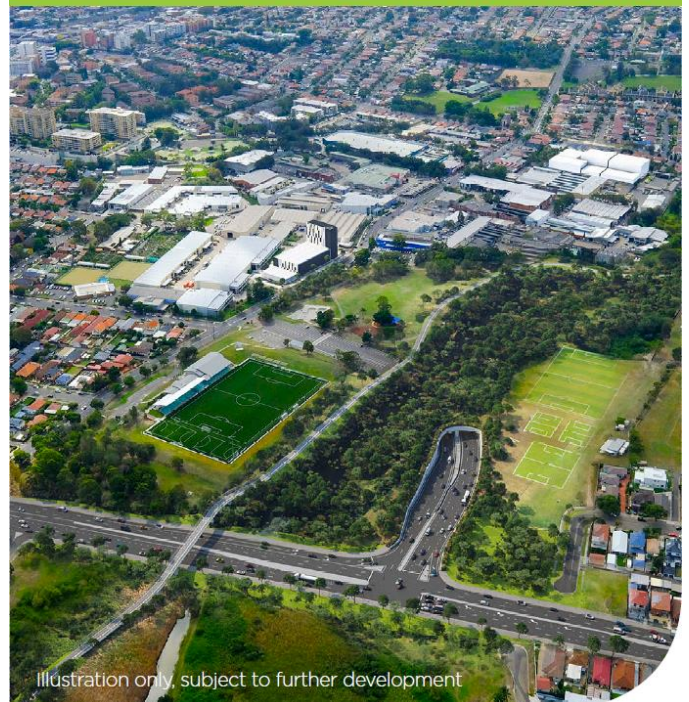
Once complete we will reinstate the area by replacing soil and relaying grass. This may lead to raised ground levels in some areas for a short period of time so please be careful.

Traffic changes and pedestrian access

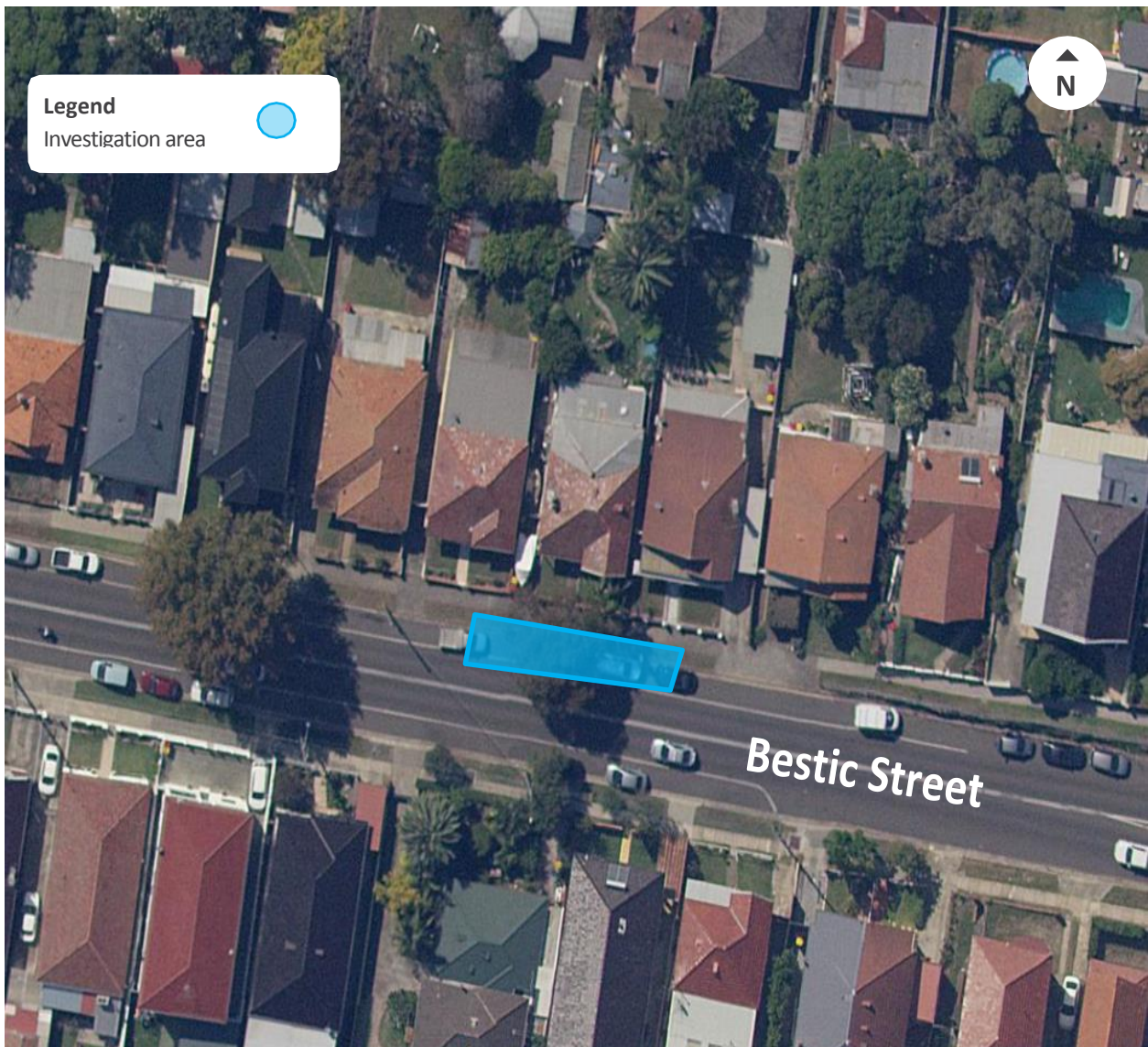
Our work will impact up to three car parking spaces and part of the footpath. This is because we need to install temporary fencing around the work site and store our equipment overnight.

There will be traffic control and signage in place during our work. We ask that pedestrians and motorists take care when navigating around our work area.

Entry and exit ramps of the F6 Extension Stage 1 tunnels at President Avenue, Kogarah.



Location of work at Rockdale



For the latest traffic updates

Call **132 701** Visit [livetraffic.com](https://www.livetraffic.com) Download the App **Live Traffic NSW**



Contact our team

Thank you for your patience while we complete this important work. Please contact us if you have more questions.

-  rms.nsw.gov.au/F6Extensionportal
-  rms.nsw.gov.au/F6
-  F6Extension@rms.nsw.gov.au
-  1800 789 297
-  Roads and Maritime Services
Locked Bag 928, North Sydney NSW 2059



If you need help understanding this information, please contact the Translating and Interpreting Service on **131 450** and ask them to call us on **1800 789 297**.

Privacy Roads and Maritime Services ("RMS") is subject to the Privacy and Personal Information Protection Act 1998 ("PIIP Act") which requires that we comply with the Information Privacy Principles set out in the PIIP Act. All information in correspondence is collected for the sole purpose of assisting the assessment of this proposal. The information received, including names and addresses of respondents, may be published in subsequent documents unless a clear indication is given in the correspondence that all or part of that information is not to be published. Otherwise RMS will only disclose your personal information, without your consent, if authorised by the law. Your personal information will be held by RMS. You have the right to access and correct the information if you believe that it is incorrect.