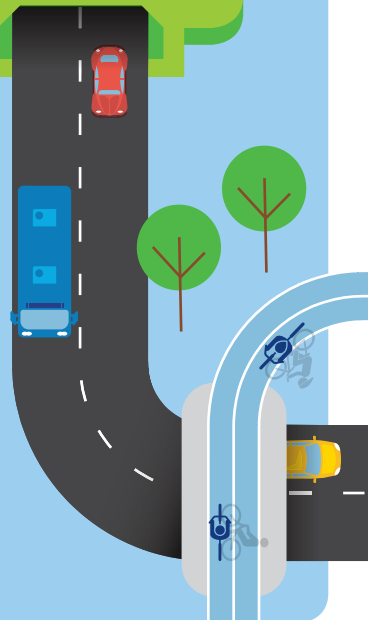




# F6 Extension Stage 1

## Site investigations on West Botany Street, Rockdale from Monday 4 November



The F6 Extension Stage 1 will remove over 2,000 trucks a day from surface roads; returning local streets to local communities.

To help us with our plans, we need to carry out some utility investigations on West Botany Street, Rockdale from Monday 4 November.

### What does our work involve?

We'll be scanning and digging into the ground to gather information about existing utility services to help us design and build the F6 Extension Stage 1 project.

We will be using light vehicles, a vacuum truck, scanning equipment and hand tools during our work.

Once complete we will reinstate the area by replacing soil and relaying grass. This may lead to raised ground levels in some areas for a short period of time so please be careful.

Our work area is shown on the map over the page.

### Our work schedule

Some of our work will need to take place at night to minimise our impact to local traffic. We will be working during one night shift along West Botany Street, shown in the map over the page.

Our work hours are between:

**Monday to Friday, 8pm and 5am.**

We expect the work to take up to one night shift to complete, weather permitting. We will have one crew working at one location at a time.

### How will our work affect you?

We will help to reduce noise by using low noise reversing alarms on all machinery and turning off equipment and vehicles when they are not being used. We will also ensure noisier work is completed by midnight.

### Traffic changes and pedestrian access

Our work will take up part of the footpath and part of the left lane on West Botany Street.

There will be traffic control and signage in place during our work, as shown in the map over the page. We ask that pedestrians and motorists take care when navigating around our work area.

*Entry and exit ramps of the F6 Extension Stage 1 tunnels at President Avenue, Kogarah.*



Illustration only, subject to further development

## Location of work at Rockdale



### For the latest traffic updates:

Call [132 701](tel:132701) Visit [livetraffic.com](http://livetraffic.com) Download the App **Live Traffic NSW**



### Contact our team


Thank you for your patience while we complete this important work. Please contact us if you have more questions.

 [rms.nsw.gov.au/F6Extensionportal](https://rms.nsw.gov.au/F6Extensionportal)

 [rms.nsw.gov.au/F6](https://rms.nsw.gov.au/F6)

@ [F6Extension@rms.nsw.gov.au](mailto:F6Extension@rms.nsw.gov.au)

 [1800 789 297](tel:1800789297)

 Roads and Maritime Services  
Locked Bag 928, North Sydney NSW 2059



If you need help understanding this information, please contact the Translating and Interpreting Service on **131 450** and ask them to call us on **1800 789 297**.

**Privacy** Roads and Maritime Services ("RMS") is subject to the Privacy and Personal Information Protection Act 1998 ("PIIP Act") which requires that we comply with the Information Privacy Principles set out in the PIIP Act. All information in correspondence is collected for the sole purpose of assisting the assessment of this proposal. The information received, including names and addresses of respondents, may be published in subsequent documents unless a clear indication is given in the correspondence that all or part of that information is not to be published. Otherwise RMS will only disclose your personal information, without your consent, if authorised by the law. Your personal information will be held by RMS. You have the right to access and correct the information if you believe that it is incorrect.