

F6 Extension Stage 1

Work on Ashton Street Rockdale from Wednesday 23 January



The NSW Government is progressing with the development of the F6 Extension Stage 1 between the New M5 Motorway at Arncliffe and President Avenue at Kogarah.

Roads and Maritime Services will be carrying out geotechnical investigations at Ashton Street, near Rockdale Plaza. A map is included to show the location of the work.

These geotechnical investigations are being carried out to gather information about the ground conditions within the F6 Extension Stage 1 project area. The investigation work will involve drilling a borehole to extract soil samples using borehole drilling equipment. To carry out the work, light vehicles, drilling rigs and a trailer mounted generator will be in use. Heavy vehicles will not be used.

Our work schedule

We will be working between **Wednesday 23 January** and **Monday 4 February** excluding public holidays, weather permitting.

Our work hours will be between:

- Monday and Friday, 7am to 6pm
- Saturday, 8am to 1pm.

The work will take around eight days to complete.

How will the work affect you?

Our work may be noisy at times but we will do everything we can to minimise its impact.

Access to private property will be maintained.

To ensure the work zone is safe, Roads and Maritime will install temporary fencing and traffic cones around the work area for the duration of the drilling work.

There may be some impact on street parking near the site while the work is being carried out.

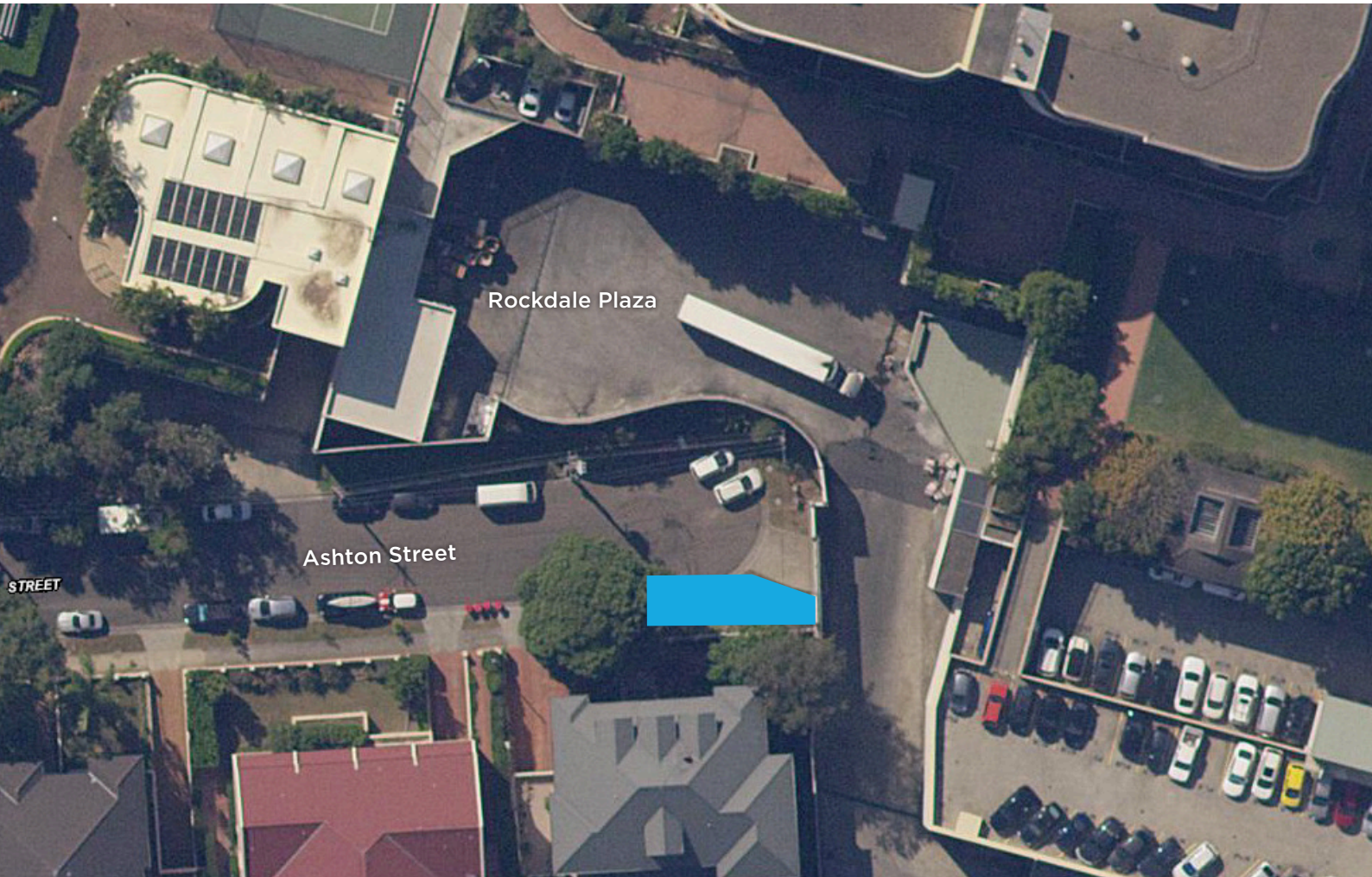


Traffic changes

There will not be any traffic changes or changes to pedestrian access to footpaths associated with this work.

Thank you for your patience during this important work.

Location of work at Ashton Street Rockdale.

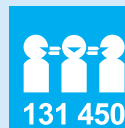


If you have any questions, please contact the F6 Extension project team:

-  rms.nsw.gov.au/F6
-  1800 789 297
-  F6Extension@rms.nsw.gov.au
-  Customer feedback
Roads and Maritime Services
Locked Bag 928, North Sydney NSW 2059

Legend

-  Planned day work location



This document contains important information about transport projects in your area. If you need an interpreter, please call the Translating and Interpreting Service on **131 450** and ask them to call the Project Team on **1800 789 297**. The interpreter will then help you with translation.



January 2019

Privacy Roads and Maritime Services ("RMS") is subject to the Privacy and Personal Information Protection Act 1998 ("PPIP Act") which requires that we comply with the Information Privacy Principles set out in the PPIP Act. All information in correspondence is collected for the sole purpose of assisting in the delivery of this project. The information received, including names and addresses of respondents, may be published in subsequent documents unless a clear indication is given in the correspondence that all or part of that information is not to be published. Otherwise RMS will only disclose your personal information, without your consent, if authorised by the law. Your personal information will be held by RMS at 27 Argyle Street, Parramatta. You have the right to access and correct the information if you believe that it is incorrect.