

F6 road corridor – ground water monitoring well installation

The NSW government is progressing with the development of the F6 Extension Stage 1 between the New M5 Arncliffe and President Avenue, Kogarah

Roads and Maritime Services carries out ground water monitoring to gather information about underground conditions across a broad area of the F6 corridor. Data from this work will be used to inform the conceptual design and future plans.

Some sites identified by our geologists for test drilling will become ground water monitoring wells and require a small installation. Work at Spring Street, Rockdale **will start week commencing Monday 23 October 2017** and will take around 2 – 3 days to complete (weather permitting). When the installation is complete, monthly checks will take place for a six month period. After monitoring is complete, the site will be restored to its previous condition.

The work will take place between **7am and 6pm Monday to Friday**. There will be no work at night, on weekends or on public holidays.

How will the work affect you?

The work requires the drilling of a borehole and the installation of ground water monitoring equipment. The work requires light vehicles and a trailer mounted generator. Heavy vehicles will not be used.

There may be some noise associated with this work. We will minimise the disturbance to the local community and operate in an environmentally sensitive and sustainable manner.

The location of these tests does not indicate a possible alignment and the work is designed to gather data about rock strata and conditions deep below ground.

Traffic changes

Appropriate site controls will be in place including traffic controls if required. If traffic controls are required, please observe all signage and follow the instructions of traffic controllers.

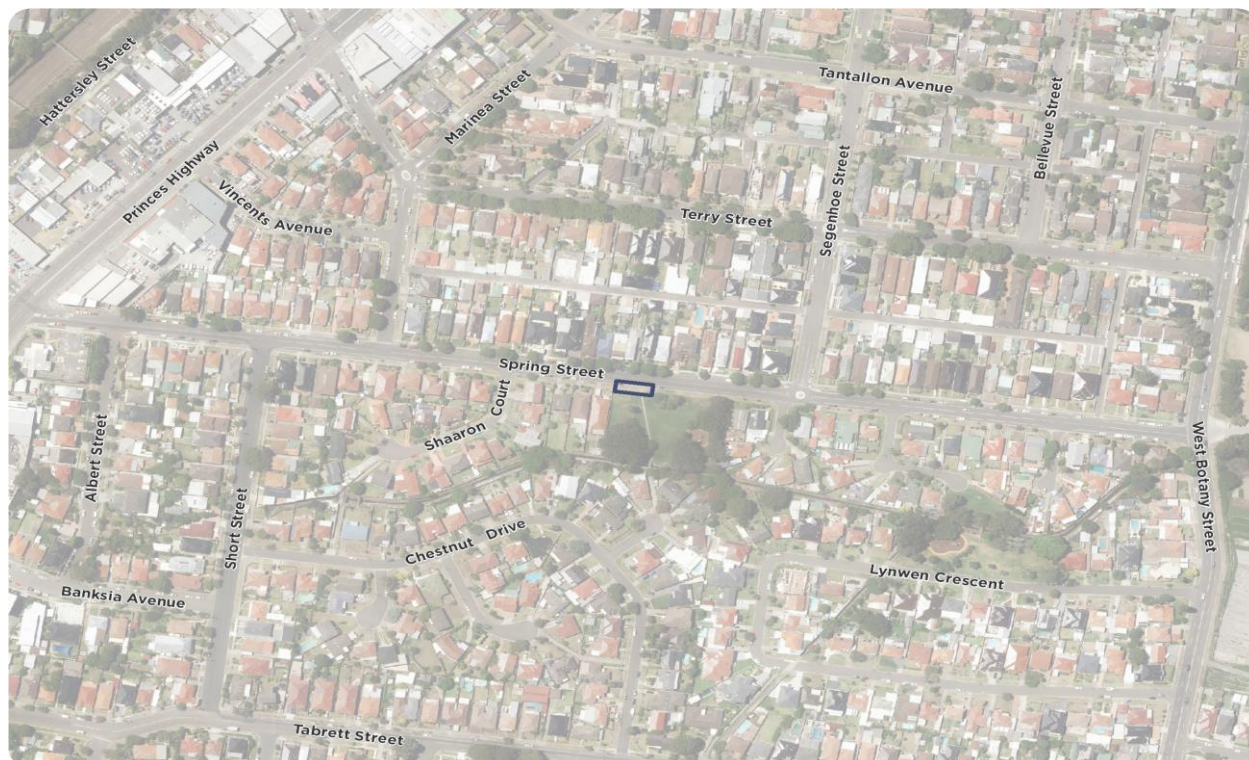
For the latest traffic updates, please contact 132 701, visit livetraffic.com or download the Live Traffic NSW App.

Contact

If you have any questions please call our project team on 1800 789 297 during office hours (8:30am to 5pm Monday to Friday) or email F6Extension@rms.nsw.gov.au Thank you for your patience during this important work.

Work areas

Spring Street, Rockdale



Translating and Interpreting Service

If you need an interpreter, please call the Translating and Interpreting Service (TIS National) on 131 450 and ask them to telephone the Project Team on 1800 789 297.

