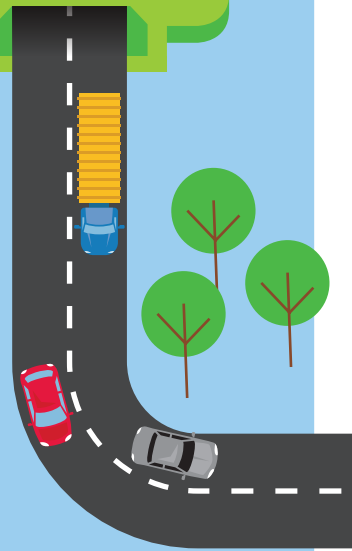




F6 Extension Stage 1

Removal of air quality monitoring equipment on the corner of General Holmes Drive and Tancred Avenue, Kyeemagh



The NSW Government is progressing with the development of the F6 Extension Stage 1 between the New M5 Motorway at Arncliffe and President Avenue at Kogarah.

The F6 Extension Stage 1 will remove over 2,000 trucks a day from surface roads; returning local streets to local communities.

Roads and Maritime Services carried out a number of environmental investigations and assessments to provide important input into the Environmental Impact Statement (EIS). The EIS was on public display from 7 November to 14 December 2018, seeking feedback from stakeholders and the community on the proposed project. Our response to community submissions is now available to view on the Department of Planning and Environment's website planningportal.nsw.gov.au/majorprojects

Air quality monitoring equipment was installed at the corner of General Holmes Drive and Tancred Avenue, Kyeemagh in October 2017, to monitor air quality to support the preparation of the EIS. The site was identified by our air quality advisors.

This monitoring station is no longer required as the environmental assessments for the EIS has been completed.

Our work

We will start work to remove the station from the site. This includes disconnecting electricity and removing the fence infrastructure and concrete base. Light vehicles, a crane truck and tools to remove the concrete base will be used for this work.

Our work schedule

We will be working from **Monday 13 May** to **Friday 24 May**, weather permitting.

Our work hours will be between:

- Monday to Friday, 7am to 6pm
- Saturday, 8am to 1pm (if required).

The work will take around five days to complete.

How will the work affect you?

Work is expected to have minimal impact on neighbours, however, some activities are expected to be noisy. We will keep noise to a minimum as far as possible.

There will be no changes to traffic or pedestrian access to footpaths associated with this work.

Fast facts



Up to **23**
traffic lights
bypassed



Improving traffic flow
fewer vehicles and less
stopping on surface roads

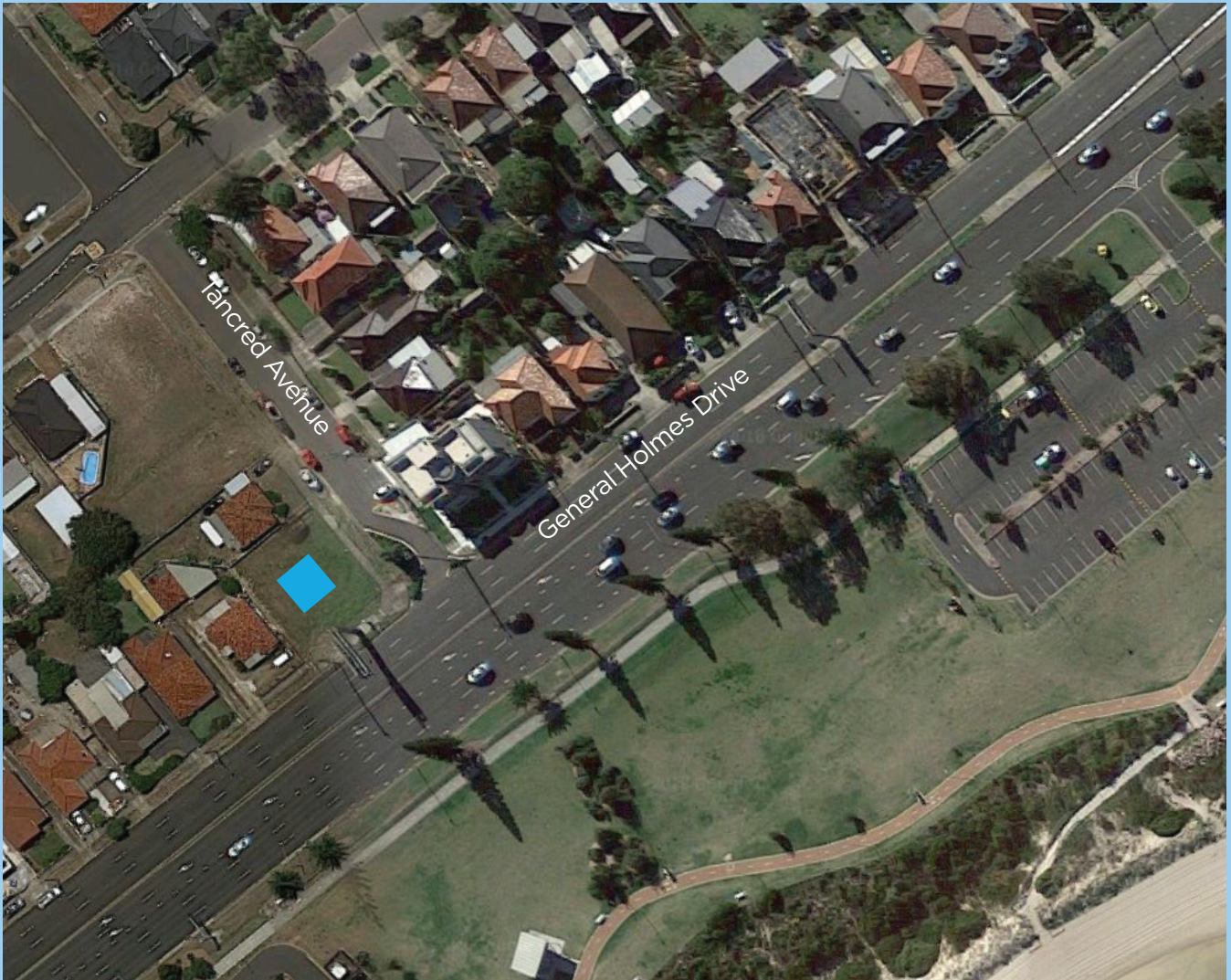


over **2000** trucks
per day removed from
nearby surface roads




Deliver improvements
to local **air quality**

Location of work at the Corner of General Holmes Drive and Tancred Avenue, Kyeemagh




Legend


 Planned day work location

If you have any questions, please contact the F6 team

 rms.nsw.gov.au/F6

 F6Extension@rms.nsw.gov.au

 1800 789 297

 Roads and Maritime Services
Locked Bag 928, North Sydney NSW 2059



If you need help understanding this information, please contact the Translating and Interpreting Service on 131 450 and ask them to call us on 1800 789 297.

Privacy Roads and Maritime Services ("RMS") is subject to the Privacy and Personal Information Protection Act 1998 ("PIIP Act") which requires that we comply with the Information Privacy Principles set out in the PIIP Act. All information in correspondence is collected for the sole purpose of assisting the assessment of this proposal. The information received, including names and addresses of respondents, may be published in subsequent documents unless a clear indication is given in the correspondence that all or part of that information is not to be published. Otherwise RMS will only disclose your personal information, without your consent, if authorised by the law. Your personal information will be held by RMS. You have the right to access and correct the information if you believe that it is incorrect.