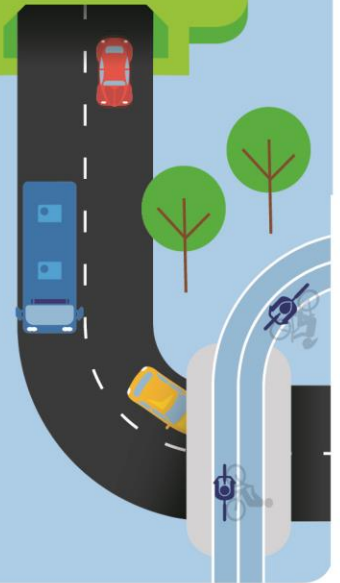




M6 Stage 1

Utility investigations on Princes Highway, Kogarah from Wednesday 2 December



The M6 Stage 1 will connect President Avenue at Kogarah to the M8 at Arncliffe, connecting southern Sydney to the wider motorways network.

From Wednesday 2 December, we will be carrying out utility investigations near the intersection of Princes Highway and President Avenue, Kogarah to provide important information to help us design and build the M6 Stage 1 project.

What does our work involve?

Our work involves carrying out investigations to locate existing underground utilities.

We will use light vehicles, a vacuum excavation truck, concrete saw and a generator to complete the work.

Our work area is shown on the map over the page.

Our work schedule

Our work needs to be carried out near the road and will need to take place at night, when traffic volumes are lower.

The work will take up to three nights to complete, weather permitting.

Our night work hours are:

8pm to 5am, Monday to Thursday

How will our work affect you?

Our work may be a little noisy as we will be cutting into concrete for short periods of time and using a vacuum excavation truck. We will carry out this work at the start of our shift to minimise the impact.

For the safety of our workers and the community there will be temporary traffic changes during our work hours to ensure the work area is safe.

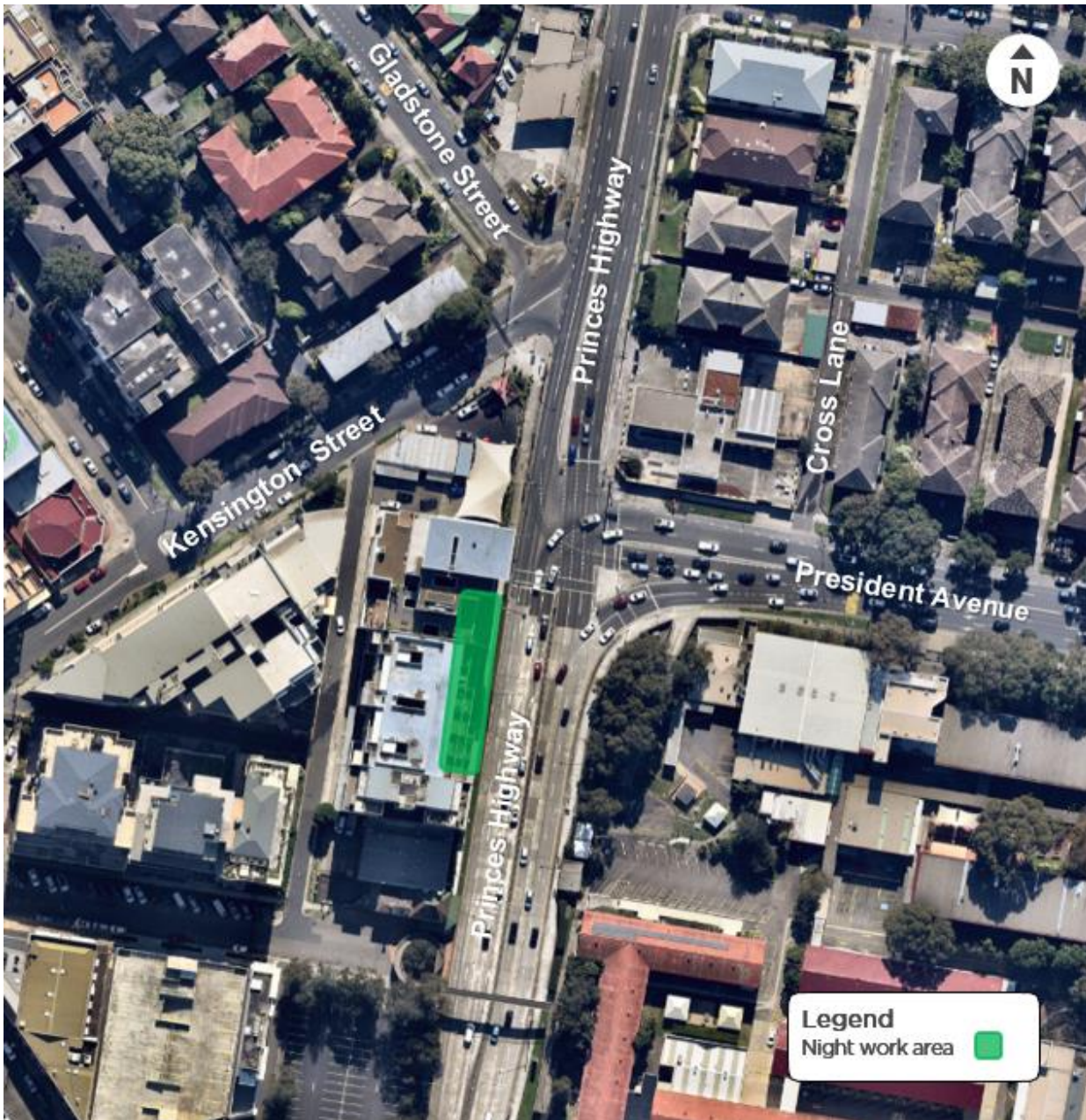
Lane closures may be in place during the work and may affect travel times. We ask pedestrians and motorists to take care when navigating around our work area.

Please keep to speed limits and follow signs and traffic controllers' directions.

Currently, infrastructure construction projects are considered essential to the economy and will continue as planned across the city and the state.

The safety and wellbeing of our workforce and the wider community is our highest priority. Our people are following hygiene and appropriate social distancing measures and will continue to do so.

Location of investigation work on Princes Highway, Kogarah



Contact our team

Thank you for your patience while we complete this important work. Please contact us if you have more questions.

-  nswroads.work/M6portal
-  nswroads.work/M6
-  M6Stage1@transport.nsw.gov.au
-  1800 789 297
-  Transport for NSW
Locked Bag 928, North Sydney NSW 2059



If you need help understanding this information, please contact the Translating and Interpreting Service on 131 450 and ask them to call us on 1800 789 297.

Privacy Transport for NSW are collecting your personal information in connection with the M6 Stage 1 ("the Project"). In addition to collecting your name and contact details we may collect other information such as your submissions and other communications with us. We will retain and use this information for consultation purposes, including communications and analysis in connection with the Project. We will not disclose your personal information to third parties unless authorised by law and if we include your submissions in any public report we will not identify you. Providing your personal information is voluntary but if you do not provide it we may not include you on our stakeholder database and you might miss further consultation opportunities. Your personal information will be held by us and you can contact us to access or correct it. Please write to us at M6Stage1@transport.nsw.gov.au or call on 1800 789 297.