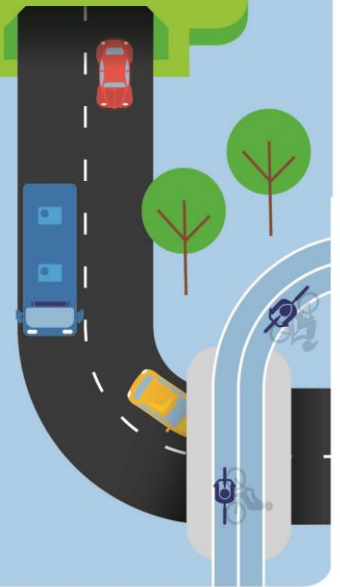




December 2019



M6 Stage 1

Site investigations Brighton Memorial Playing Fields, Rockdale, from Monday 9 December

We will be carrying out site investigations at Brighton Memorial Fields in Rockdale from Monday 9 December.

These investigations will provide us with important information to help us design and build the proposed community facilities.

This work will involve an assessment of the site and taking soil of samples. Our work area is shown on the map.

Our work schedule

Work hours are between:

Monday to Friday, 7am and 6pm

We expect the work to take around 14 days to complete, weather permitting.

How will our work affect you?

Our work will be carried out in one area at a time to minimise impact. We will also help to reduce noise by using low-noise reversing alarms on all machinery and by turning off equipment and vehicles when they are not being used.

There will be no changes to traffic or pedestrian access to footpaths during this work.

What does our work involve?

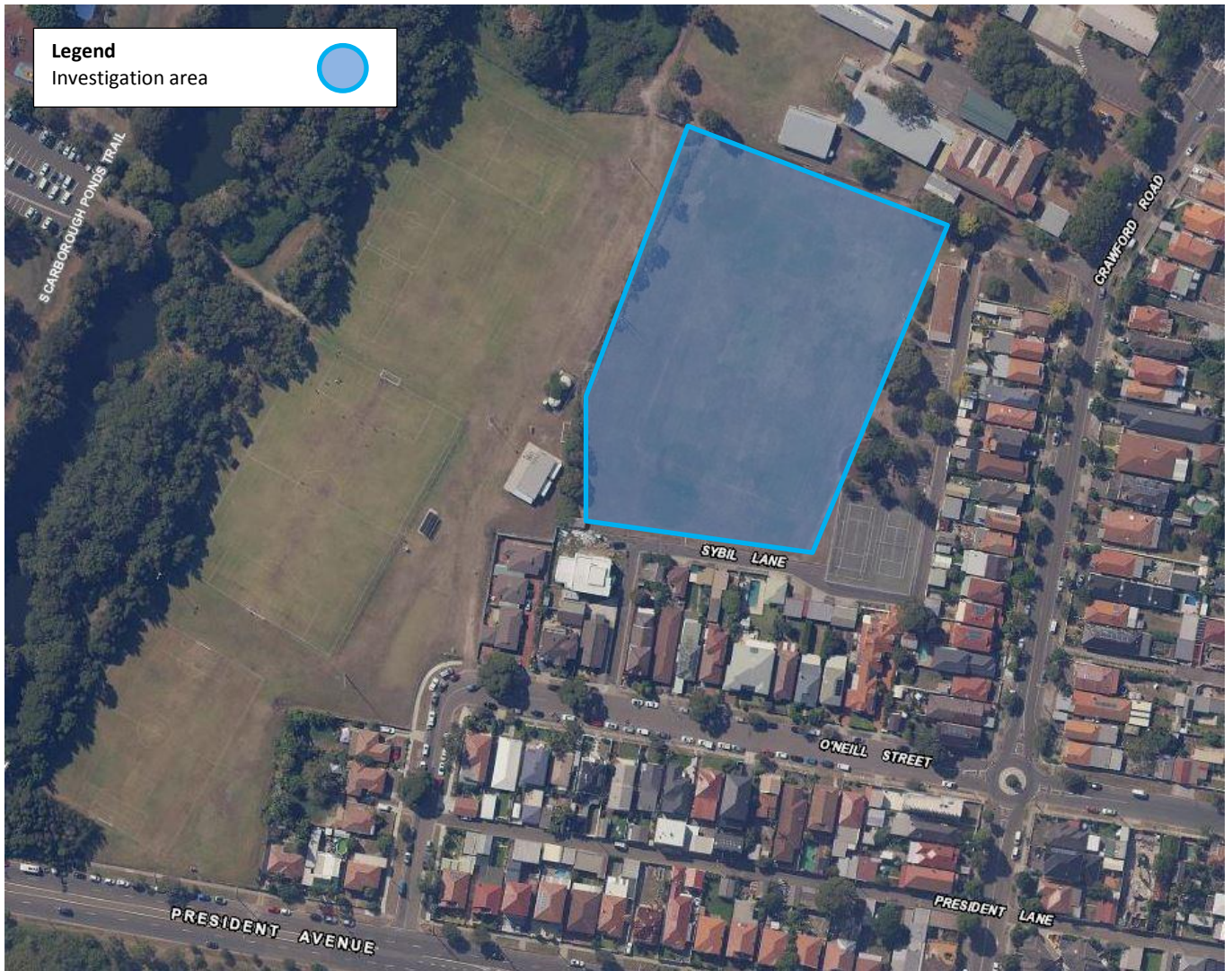
We will be using drilling equipment, light vehicles, scanning equipment and hand tools, during our work.

Once work is complete, we will reinstate the area by replacing soil and relaying grass. This may lead to raised ground levels in some areas for a short period of time so please be careful.

Proposed upgrade of Brighton Memorial Playing Fields



Location of investigation work at Rockdale



Contact our team

Thank you for your patience while we complete this important work. Please contact us if you have more questions.

-  rms.nsw.gov.au/M6portal
-  rms.nsw.gov.au/M6
-  M6Stage1@rms.nsw.gov.au
-  1800 789 297
-  Roads and Maritime Services
Locked Bag 928, North Sydney NSW 2059



If you need help understanding this information, please contact the Translating and Interpreting Service on 131 450 and ask them to call us on 1800 789 297.

Privacy Roads and Maritime Services are collecting your personal information in connection with the M6 Stage 1 ("the Project"). In addition to collecting your name and contact details we may collect other information such as your submissions and other communications with us. We will retain and use this information for consultation purposes, including communications and analysis in connection with the Project. We will not disclose your personal information to third parties unless authorised by law and if we include your submissions in any public report we will not identify you. Providing your personal information is voluntary but if you do not provide it we may not include you on our stakeholder database and you might miss further consultation opportunities. Your personal information will be held by us and you can contact us to access or correct it. Please write to us at M6Stage1@rms.nsw.gov.au or call on 1800 789 297.