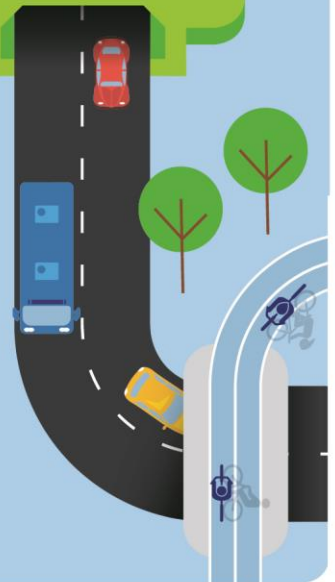


March 2020



M6 Stage 1

Site investigations at Bardwell Valley Golf Course and Silver Jubilee Park, Bardwell Valley, from Monday 16 March



We will be carrying out site investigations at Bardwell Valley Golf Course and Silver Jubilee Park, Bardwell Valley, from Monday 16 March 2020.

These investigations will provide important information to help us design and build the M6 Stage 1 project.

This work will involve assessing the site and taking soil samples. Our work area is shown on the map.

Our work schedule

Work hours are between:

7am and 6pm, Monday to Friday

We expect the work to take up to two weeks to complete, weather permitting.

How will our work affect you?

Our work will be carried out in one area at a time to minimise impact. We will also help to reduce noise by using low-noise reversing alarms on all machinery and turning off equipment and vehicles when they are not being used.

There will be no changes to traffic or pedestrian access to footpaths during this work.

What does our work involve?

We will be using light vehicles, an excavator, scanning equipment and hand tools during our work.

Once work is complete, we will reinstate the area by replacing soil and relaying grass.

Location of work



Contact our team

Thank you for your patience while we complete this important work. Please contact us if you have more questions.



nswroads.work/M6portal
nswroads.work/M6
M6Stage1@rms.nsw.gov.au
1800 789 297
Transport for NSW
Locked Bag 928, North Sydney NSW 2059



If you need help understanding this information, please contact the Translating and Interpreting Service on 131 450 and ask them to call us on 1800 789 297.

Privacy Transport for NSW are collecting your personal information in connection with the M6 Stage 1 ("the Project"). In addition to collecting your name and contact details we may collect other information such as your submissions and other communications with us. We will retain and use this information for consultation purposes, including communications and analysis in connection with the Project. We will not disclose your personal information to third parties unless authorised by law and if we include your submissions in any public report we will not identify you. Providing your personal information is voluntary but if you do not provide it we may not include you on our stakeholder database and you might miss further consultation opportunities. Your personal information will be held by us and you can contact us to access or correct it. Please write to us at M6Stage1@rms.nsw.gov.au or call on 1800 789 297.