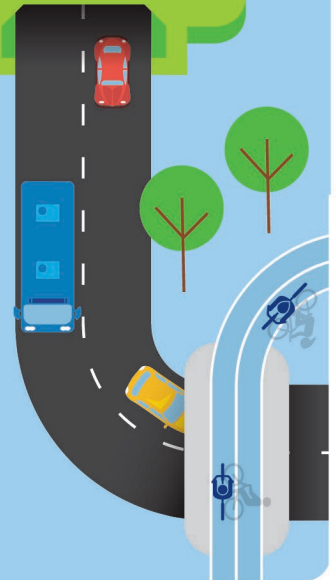


March 2019



M6 Stage 1

Utility investigations along Bay Street, Rockdale, from Monday 16 March



We will be carrying out utility investigations along Bay Street, Rockdale, from Monday 16 March.

These investigations will provide important information to help us design and build the M6 Stage 1 project.

This work will involve assessing water utilities. Our work area is shown on the map on this page.

Our work schedule

Given that our investigations need to be done in the road, we will carry out work at night to minimise any impact on traffic. Our work hours will be between:

9pm to 5am, Monday to Friday

We expect the work to take up to two nights to complete, weather permitting.

How will our work affect you?

Our work will be carried out in one area at a time to minimise impact. We will also help to reduce noise by using low-noise reversing alarms on all machinery and turning off equipment and vehicles when they are not being used.

There will be traffic control in place during our work. Access to properties will be maintained at all times.

What does our work involve?

We will be using light vehicles, a vacuum truck, scanning equipment and hand tools during our work. Once work is complete, we will reinstate the area.

Location of work



● Location of work

Contact our team

Thank you for your patience while we complete this important work. Please contact us if you have more questions.



nswroads.work/M6portal
nswroads.work/M6
M6Stage1@rms.nsw.gov.au
1800 789 297
Transport for NSW
Locked Bag 928, North Sydney NSW 2059



If you need help understanding this information, please contact the Translating and Interpreting Service on 131 450 and ask them to call us on 1800 789 297.

Privacy Transport for NSW are collecting your personal information in connection with the M6 Stage 1 ("the Project"). In addition to collecting your name and contact details we may collect other information such as your submissions and other communications with us. We will retain and use this information for consultation purposes, including communications and analysis in connection with the Project. We will not disclose your personal information to third parties unless authorised by law and if we include your submissions in any public report we will not identify you. Providing your personal information is voluntary but if you do not provide it we may not include you on our stakeholder database and you might miss further consultation opportunities. Your personal information will be held by us and you can contact us to access or correct it. Please write to us at M6Stage1@rms.nsw.gov.au or call on 1800 789 297.