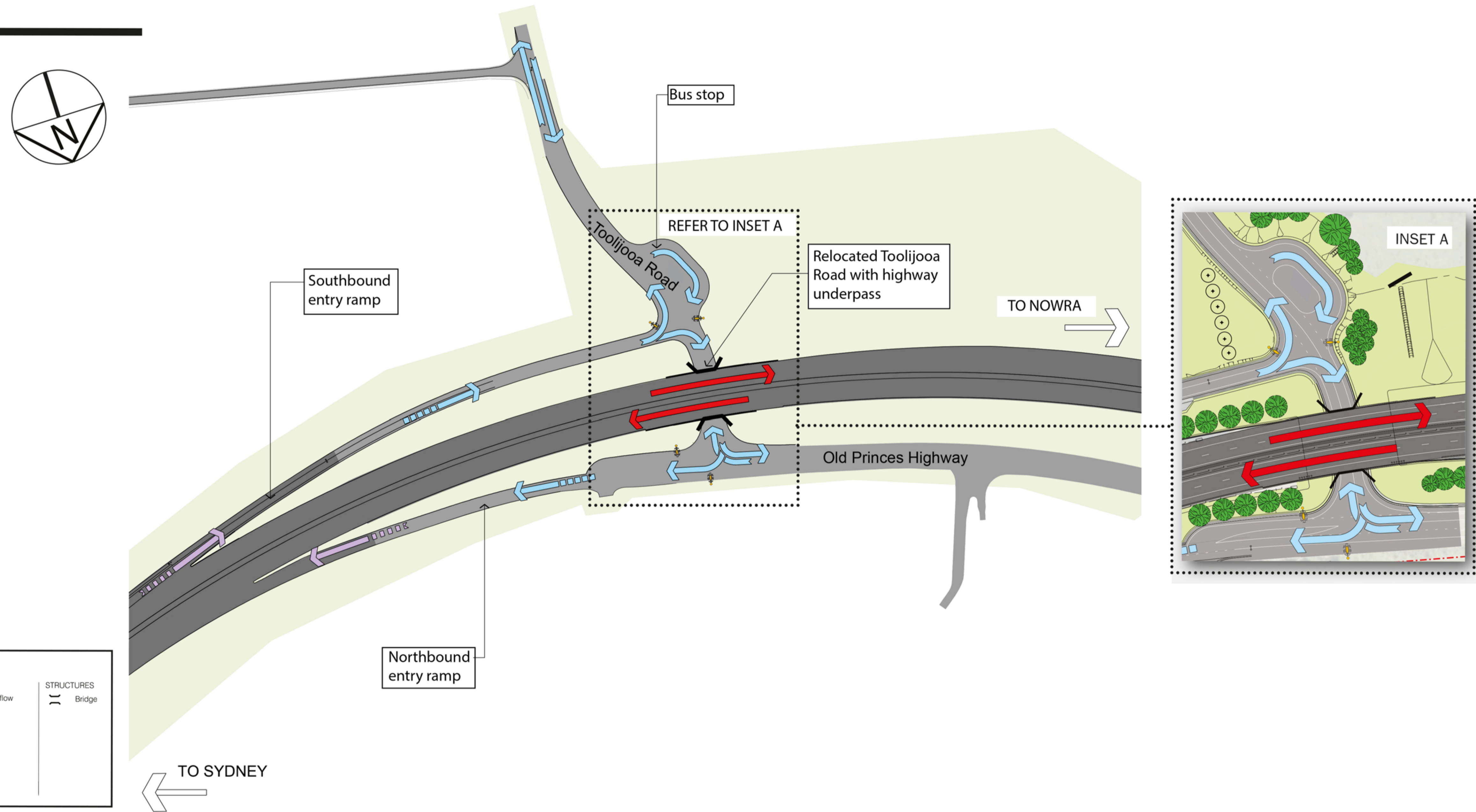


Foxground and Berry bypass

TOOLIJOOA ROAD INTERCHANGE

JULY 2014

SCALE 1:2000 @ A2



Toolijooa Road Interchange

- The Toolijooa Road interchange will link Toolijooa Road and the existing highway to the new bypass and the Gerringong upgrade.
- Exit and entry ramps for access to and from the north will be connected by a bridge under the main carriageway.

Changes from Approved Concept Design

No major changes have been proposed to the Approved Concept Design.

- To improve visibility and safety for motorists, the southbound exit ramp has been moved west 50 metres.

- The bus stop facility has been relocated to the western side of Toolijooa Road removing the need for a retaining wall at the eastern side of Toolijooa Road and reducing interaction with traffic during construction.