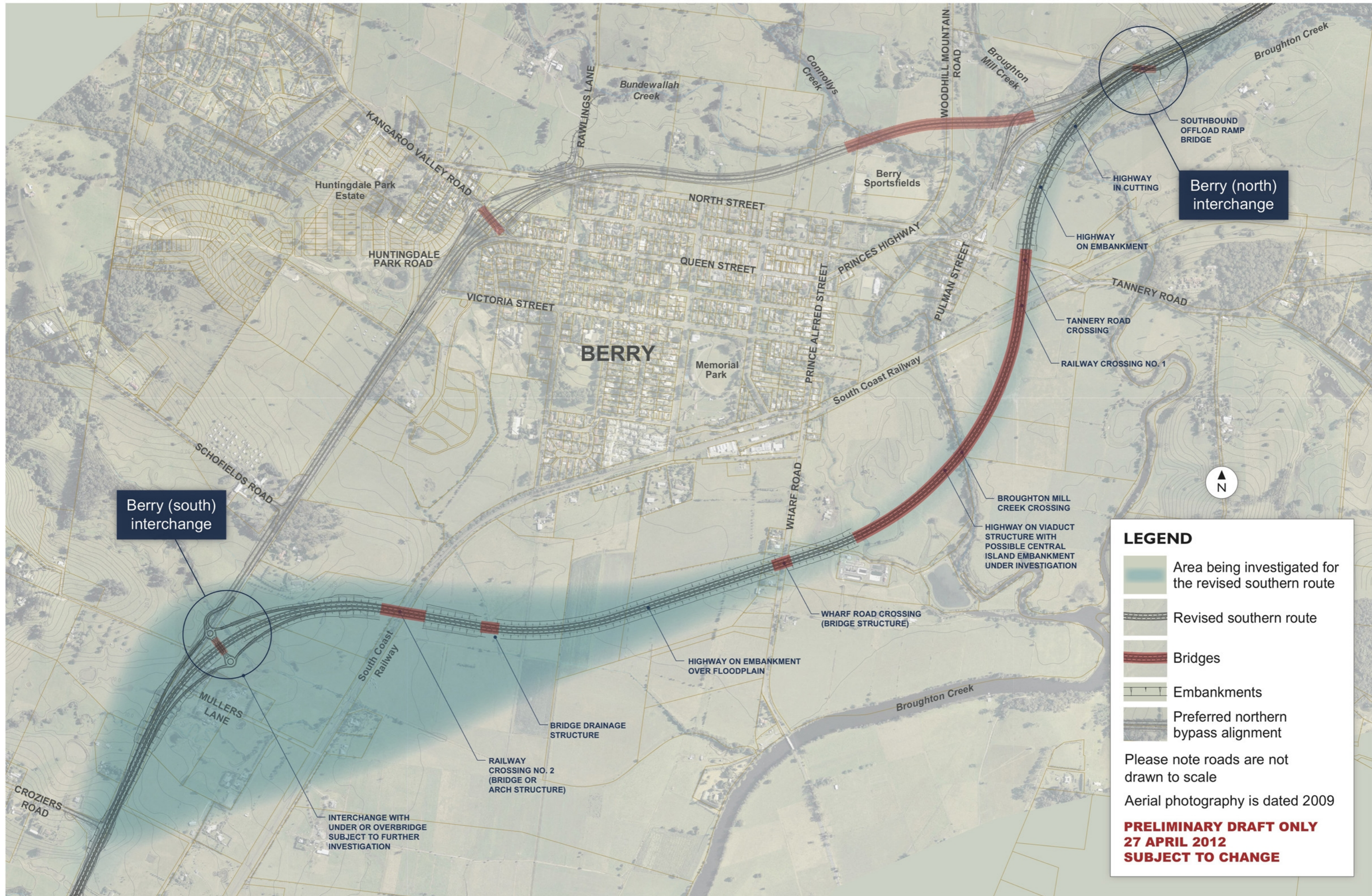


# Foxground and Berry bypass

Princes Highway

APRIL 2012

BERRY BYPASS SOUTHERN REVIEW, REVISED ROUTE

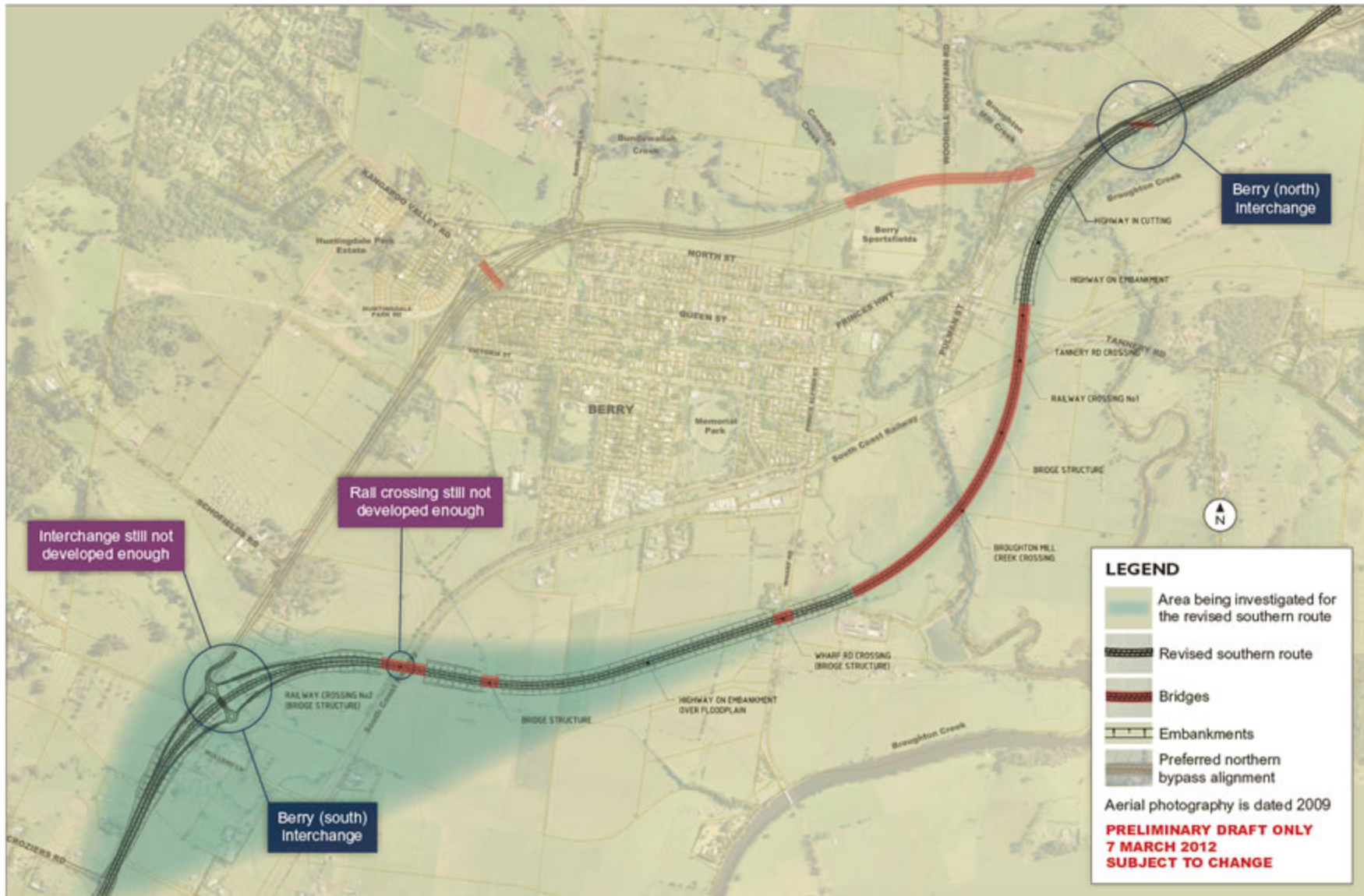




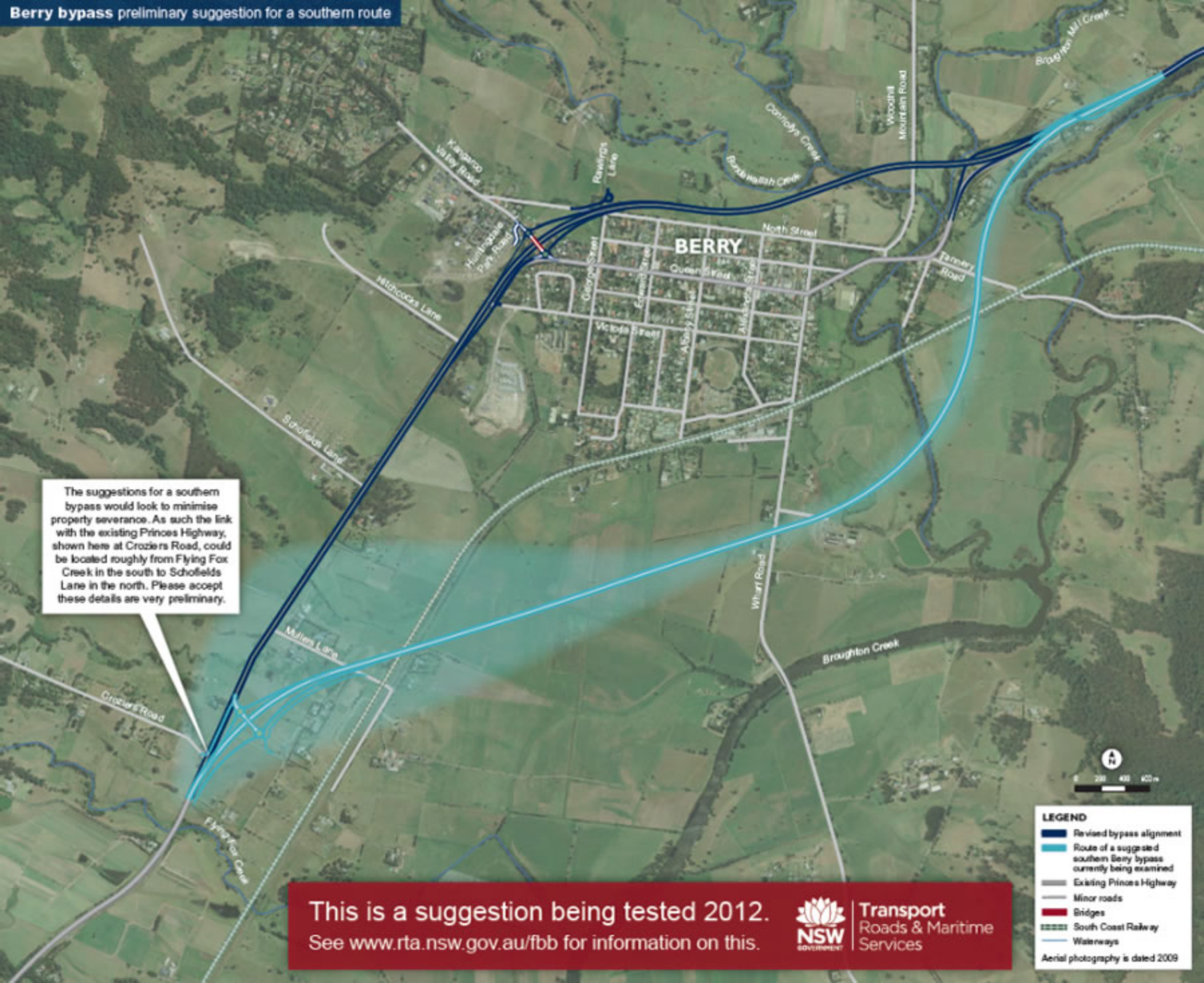
# Foxground and Berry bypass

Princes Highway

MARCH 2012 | BERRY BYPASS SOUTHERN REVIEW, REVISED ROUTE 1 MARCH 2012








The suggestions for a southern bypass would look to minimise property severance. As such the link with the existing Princes Highway, shown here at Crozier's Road, could be located roughly from Flying Fox Creek in the south to Schofields Lane in the north. Please accept these details are very preliminary.

This is a suggestion being tested 2012.  
See [www.rta.nsw.gov.au/fbb](http://www.rta.nsw.gov.au/fbb) for information on this.

**LEGEND**

-  Revised bypass alignment
-  Route of a suggested southern Berry bypass currently being examined
-  Existing Princes Highway
-  Minor roads
-  Bridges
-  South Coast Railway
-  Waterways

Aerial photography is dated 2009

