

WELCOME

BERRY BYPASS COMMUNITY MEETING 6 DECEMBER 2011

RMS

Steve Zhivanovich – Project director

Ron de Rooy – Project manager

Carla Brookes – Project communications

Michael Sheridan – Design

Joy Duncan – Manager planning

Fiona Court – Communications

Adam Berry – Project manager

Julian Watson – Project manager

Mark Kheirridine – Project engineer

Renee Ridley – Southern communications

AECOM – Jon Williamson, Angela Malpass

Meeting Agenda

1. Welcome 7.00pm

Opening remarks and introduction of local member

Fiona Court

2. Why are we here?

Objectives of today's meeting, community review group

Gareth Ward

3. Presentation of the new alignment

- Huntingdale Park Road intersection (revised proposed concept design)
- Berry bridge and northern interchange (revised proposed alignment)
- North Berry precinct (revised proposed alignment)

Steve Zhivanovich

4. Where to from here?

Display, community comment and issues report
Discussion / questions

Fiona Court

5. Thank you and close 8.30pm

Gareth Ward

WHY ARE WE HERE?

- Several community members realised the bypass was not socially and aesthetically feasible.
 - They came to RMS about this several times.
 - Local member insisted a full review of the bypass must be done in partnership with the community.
 - A community review group was formed.
 - Tonight we will show you what has been done.
-

Q: Has the review caused delays?

A: No, the environmental assessment continues.

Q: Will the bypass still be built?

A: Yes, with funding

Q: Is the new alignment better?

A: Yes, it is more socially and technically feasible

WHAT HAS CHANGED?

- Adjustments to Berry south interchange – near Kangaroo Valley Road.
- Location of the highway near North Street.
- Height and location of Berry bridge – near Woodhill Mountain Road.
- Adjustments to Berry north interchange – near the “Sculptures” rest area.

Berry bypass – south interchange Kangaroo Valley Road



Transport
Roads & Maritime
Services

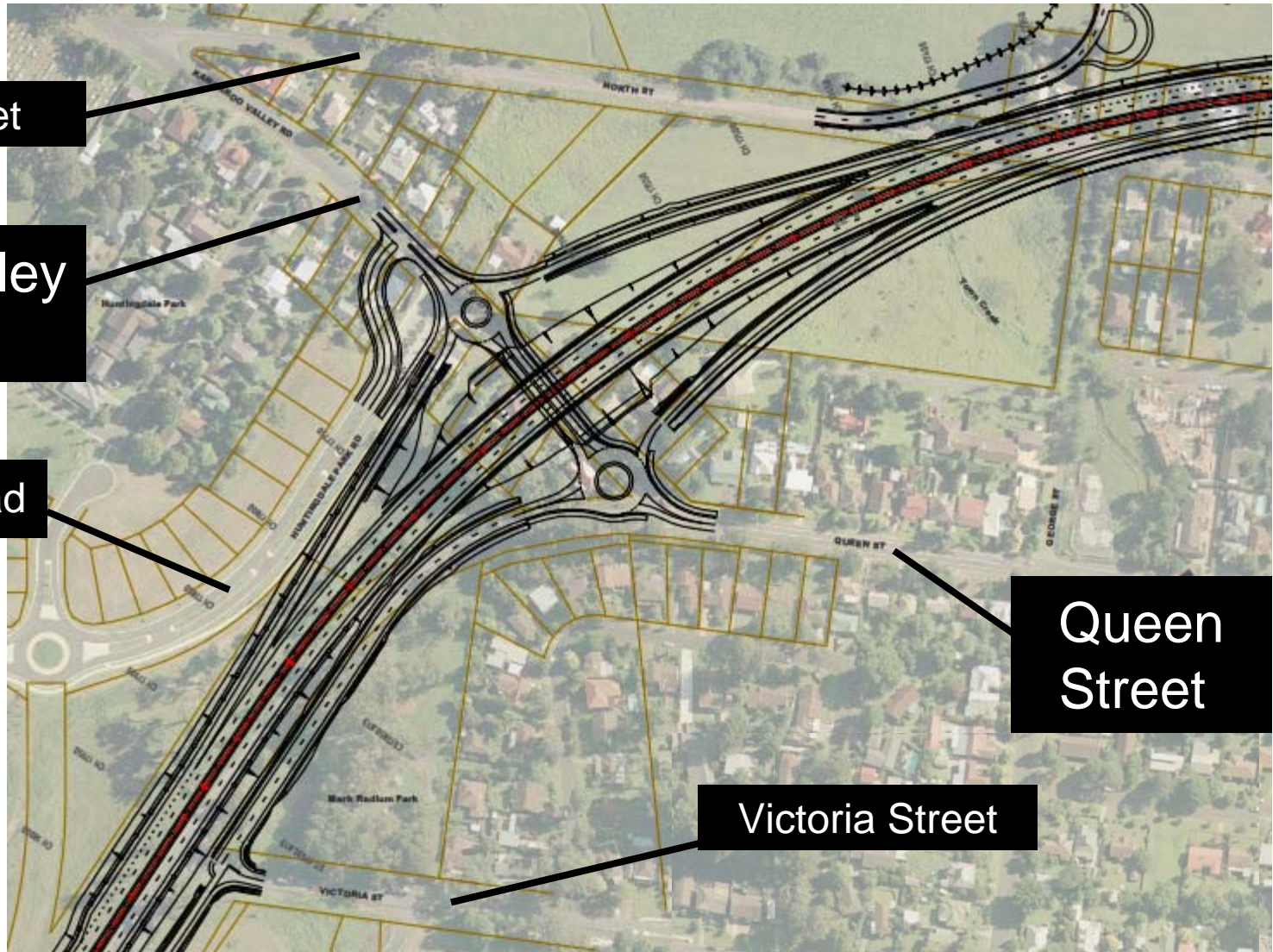
North Street

Kangaroo Valley
Road

Huntingdale Park Road

Queen
Street

Victoria Street



Berry bypass – south interchange Kangaroo Valley Road



Transport
Roads & Maritime
Services

WHAT HAS CHANGED?

Huntingdale Park Road has
separate junction with
Kangaroo Valley Road

New north-bound
off-ramp

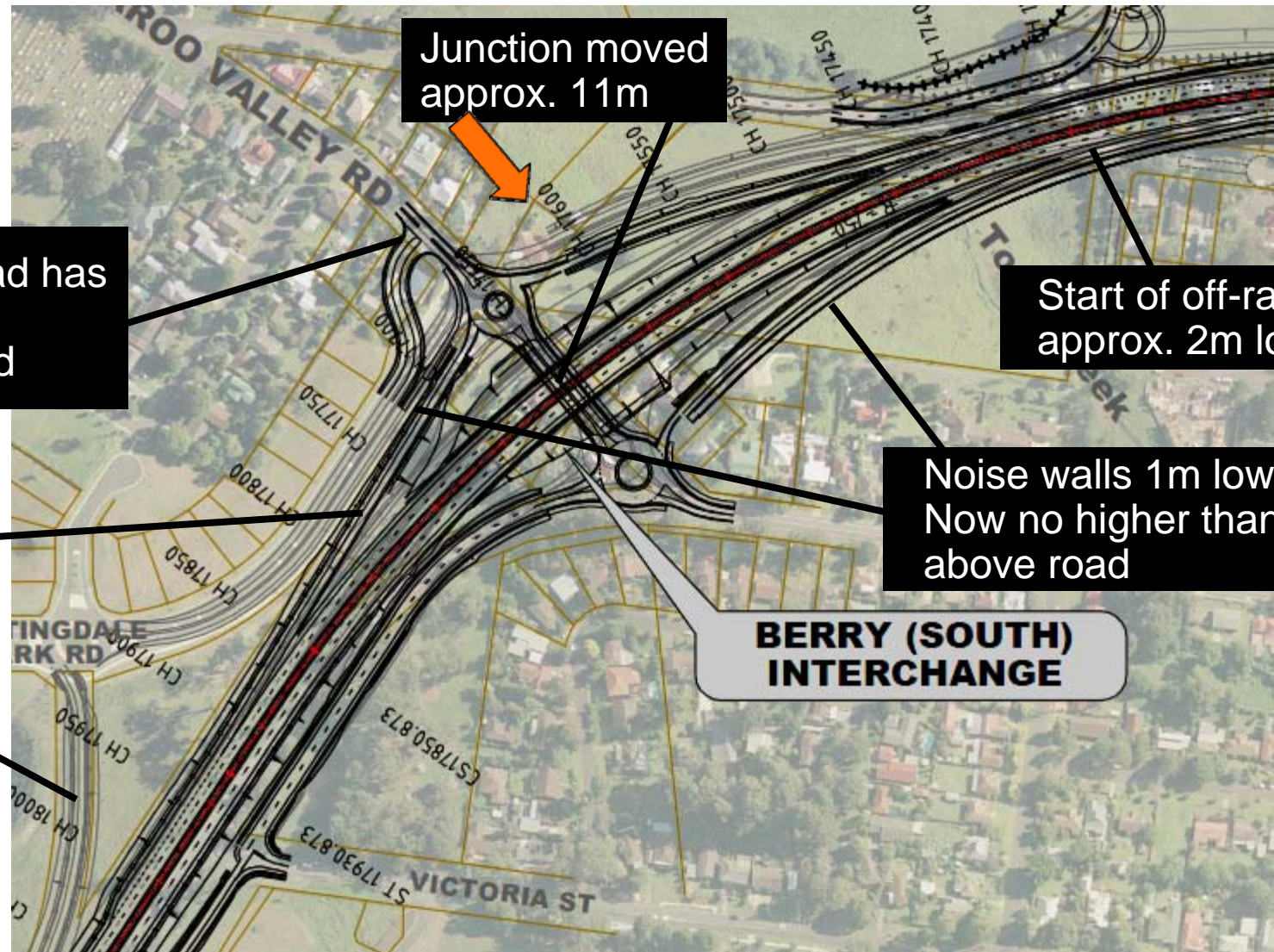
Previous off-ramp
to Huntingdale Park
Road removed

Junction moved
approx. 11m

Start of off-ramp
approx. 2m lower

Noise walls 1m lower
Now no higher than 4m
above road

**BERRY (SOUTH)
INTERCHANGE**



Berry bypass near North Street



Transport
Roads & Maritime
Services

Previous proposal



View of North Street near Albany Street

Berry bypass near North Street



Transport
Roads & Maritime
Services

Revised proposal



View of North Street near Albany Street

Berry bypass near North Street



Transport
Roads & Maritime
Services

Revised proposal with planting



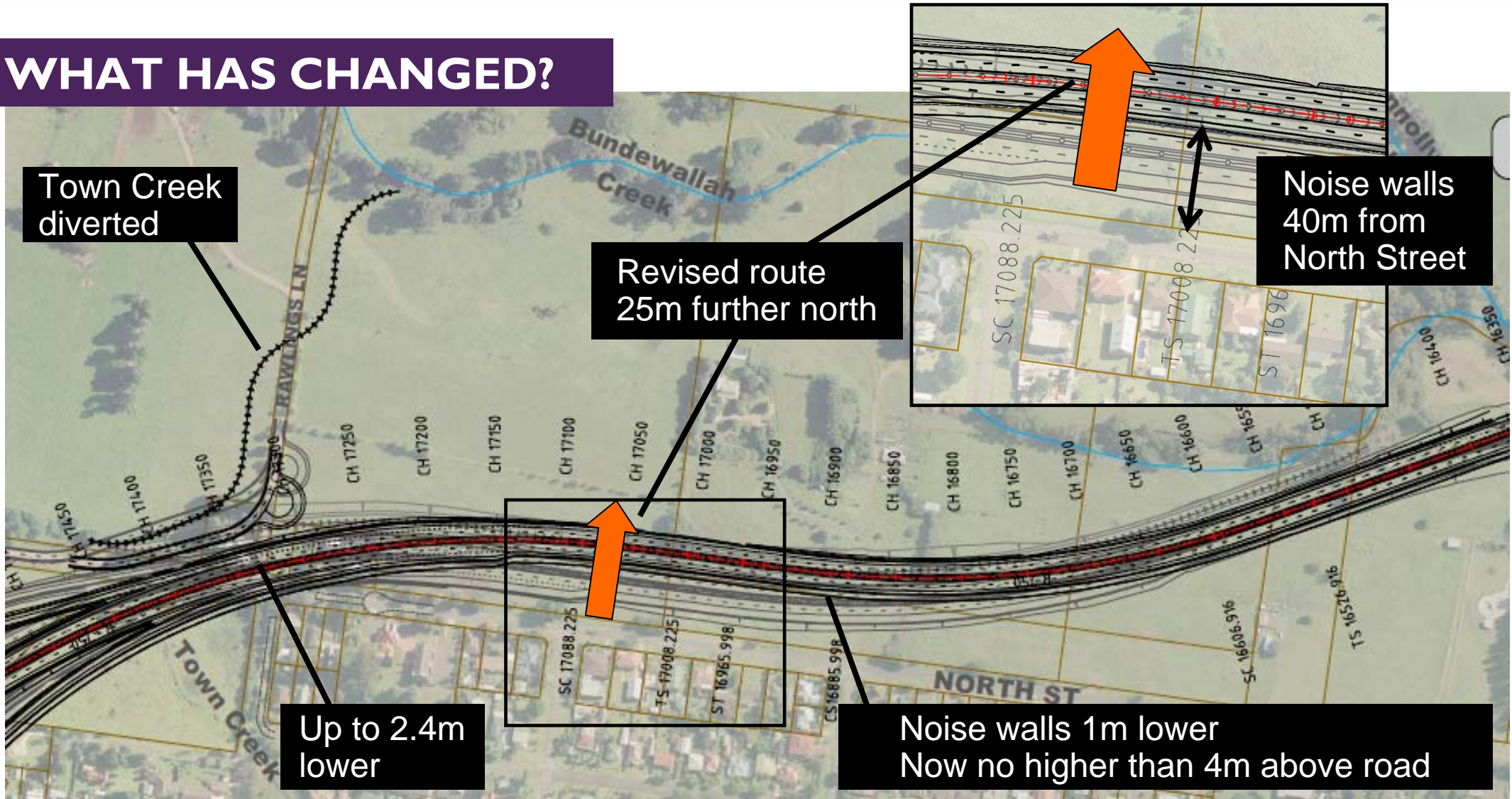
View of North Street near Albany Street

Berry bypass near North Street



Transport
Roads & Maritime
Services

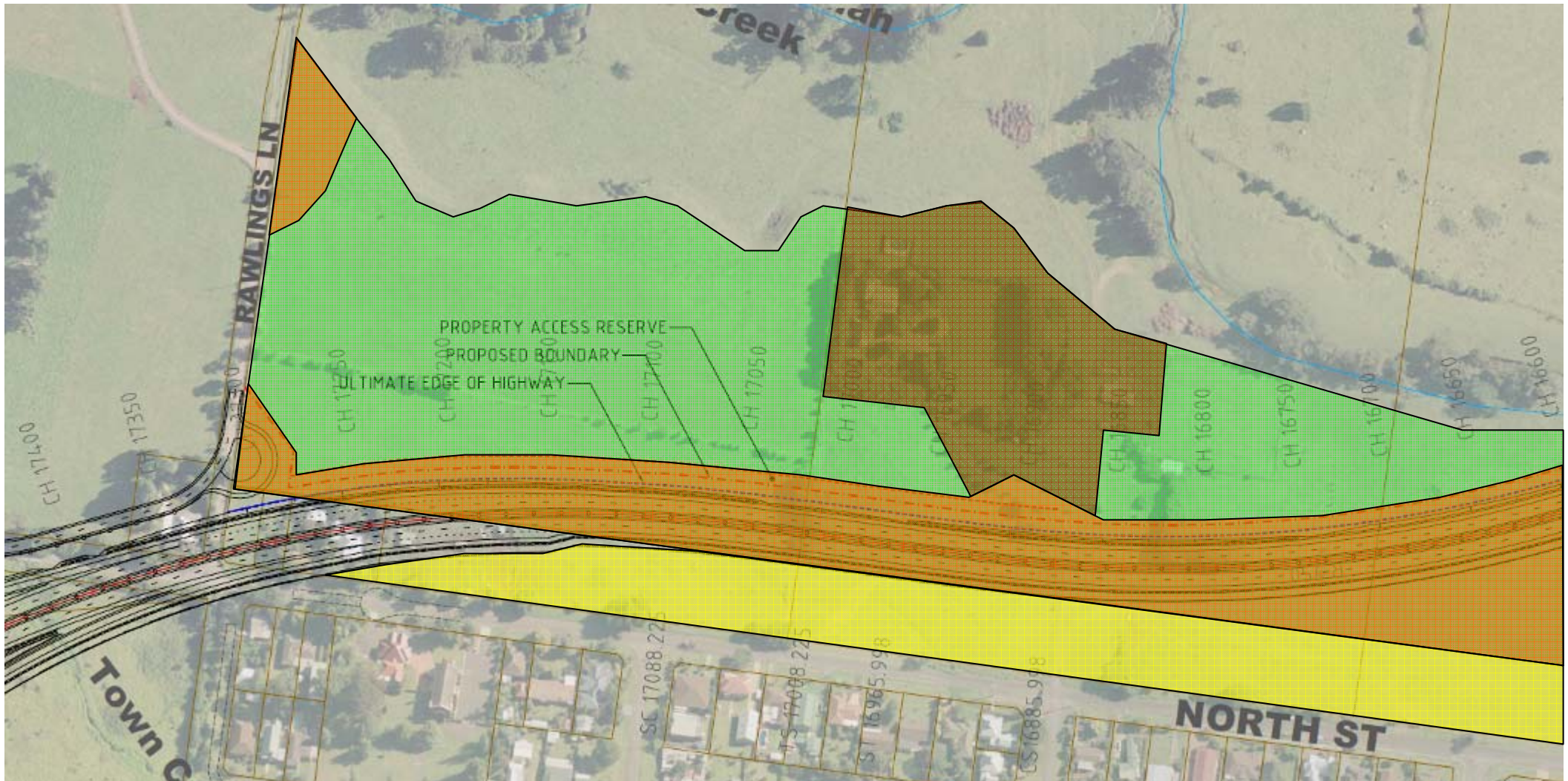
WHAT HAS CHANGED?



Berry bypass – impact on farm



Transport
Roads & Maritime
Services

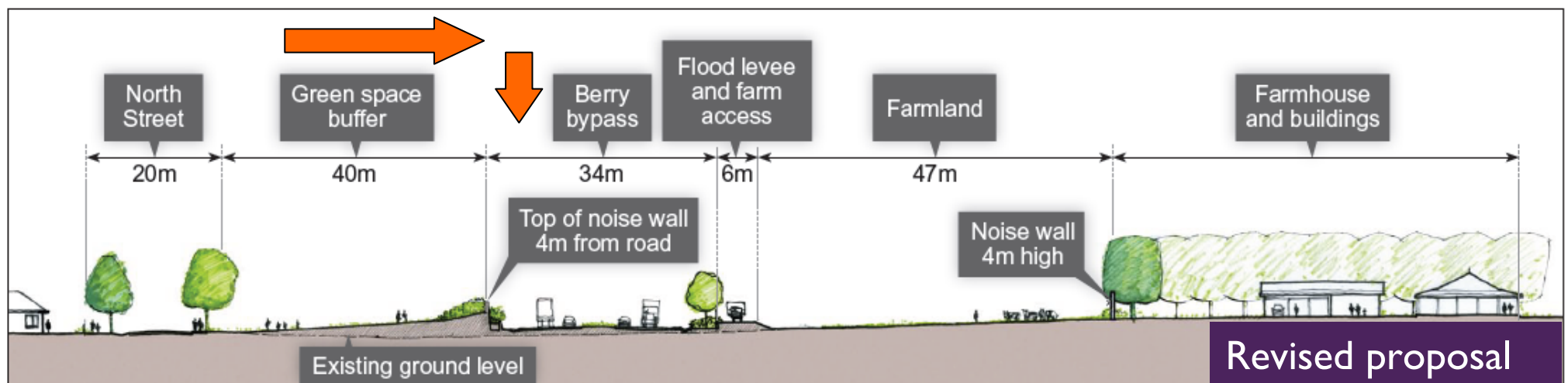
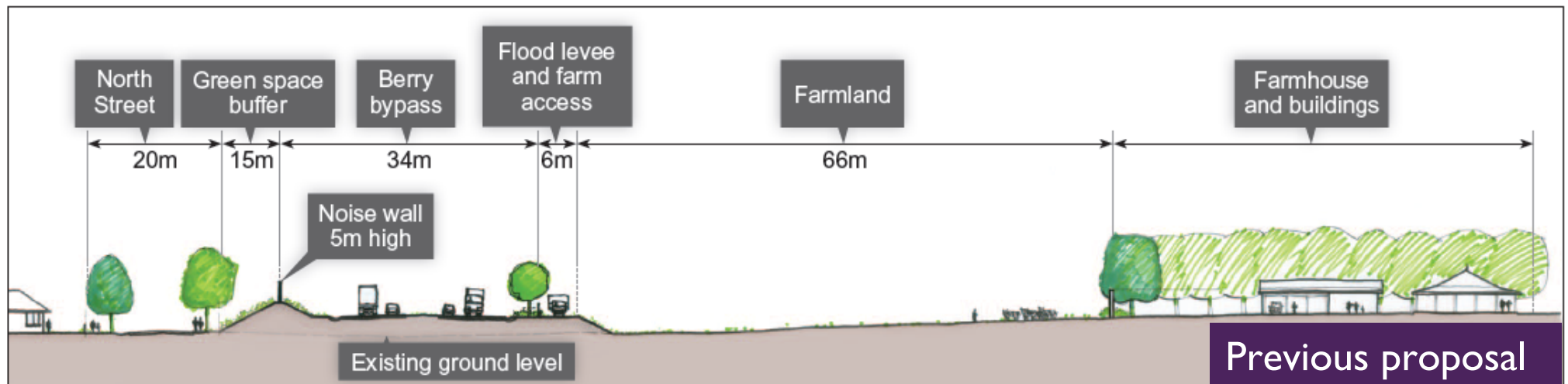


- Need to get widest buffer from North Street to new road
- Need to retain high land for farm viability
- Property access track linking Rawlings Lane will use more land
- Diversion of Town Creek will also take some high ground
- Shape of land – long and narrow – operational difficulties
- Land swap with turf farm not viable
- Final alignment uses less high ground and provides a 40m buffer to edge of North Street
- Total of 4.2 hectares required from farm representing 41% of productive pasture available

Berry bypass near North Street



Transport
Roads & Maritime
Services

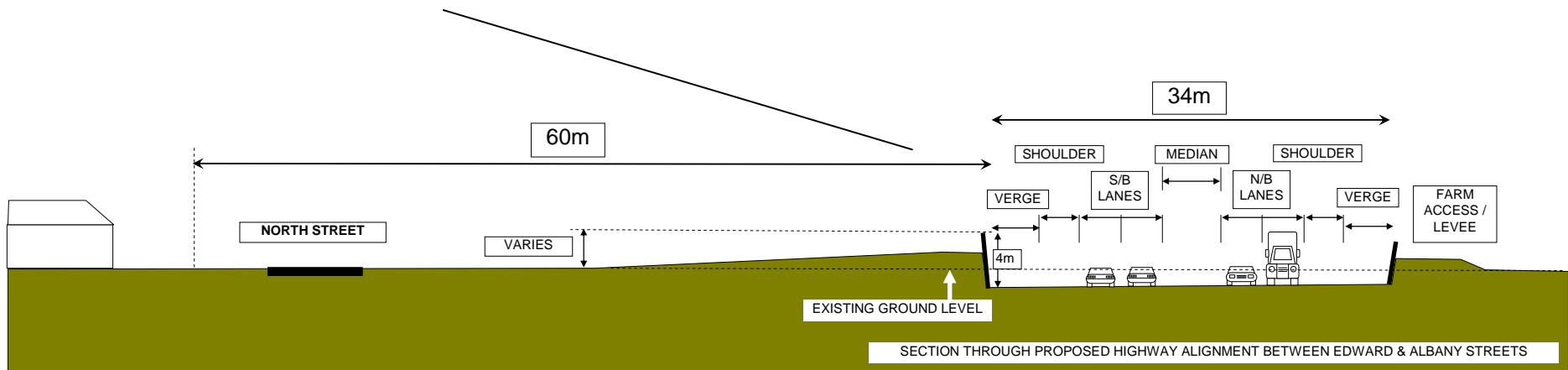
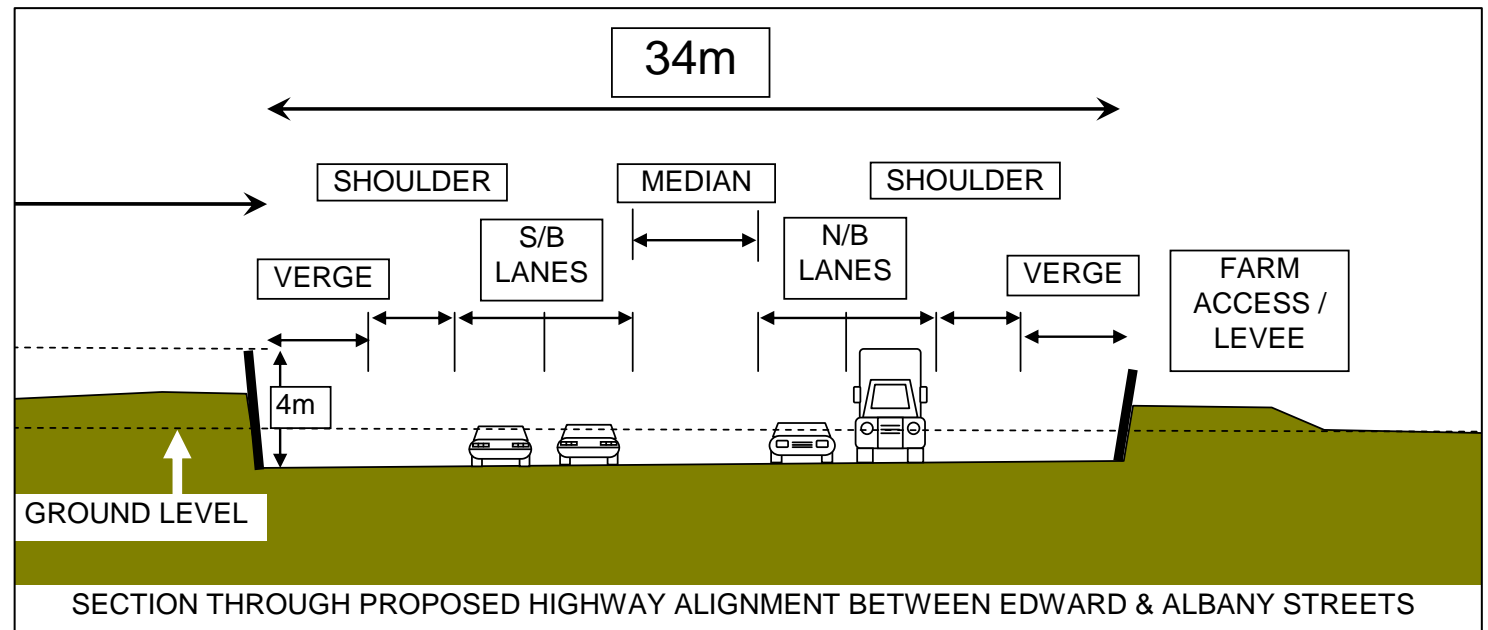


Berry bypass near North Street



Transport
Roads & Maritime
Services

Layout of new roadway

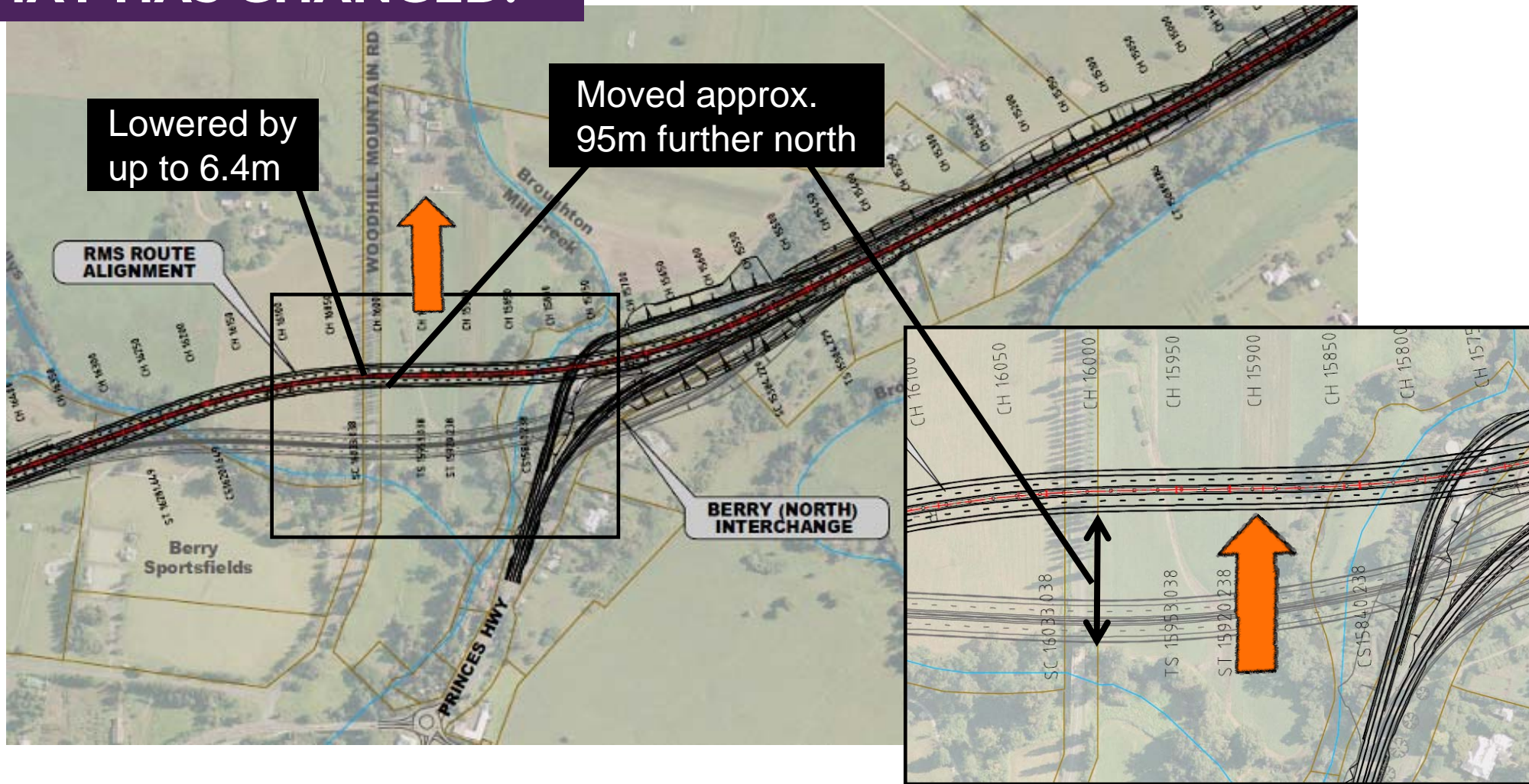


Berry bridge and north interchange



Transport
Roads & Maritime
Services

WHAT HAS CHANGED?



Berry bridge near Woodhill Mountain Road



Transport
Roads & Maritime
Services



Berry bridge near Woodhill Mountain Road



Transport
Roads & Maritime
Services



Example 1

There are various aesthetic
and engineering options



Example 2

Berry bypass – north interchange



Transport
Roads & Maritime
Services



Revised proposal



View of Berry bridge
and north interchange
looking east

Previous proposal

WHERE DO WE GO FROM HERE?

- Community comment 1 to 14 December 2011
- Community comment assessed
- Announcement 20 December 2011
- Urban design work for the entire bypass is yet to be complete and involves community input

WHERE DO WE GO FROM HERE?

- Environmental assessment will be displayed mid 2012.
 - There will be at least 30 days for community comment.
 - Followed by published submissions report.
 - Seeking planning approval late 2012.
-

COMMUNITY COMMENT

- Display until 14 December at the Berry project office Broughton Court, shop 3/113 Queen Street, Berry.
- Email us on foxgroundandberrybypass@rta.nsw.gov.au
- Visit the project website www.rta.nsw.gov.au/fbb
- Call project information line 1800 605 976

THANK YOU COMMUNITY

Roads and Maritime Services
would like to thank members of the
community review group
and others in the community for their
time, ideas and perseverance towards
improving the bypass of Berry
