

### AGENDA:

- Description of the new alignment
- North Street (Berry bypass west)
- Berry Bridge (Berry bypass east)
- Process from here

FOR CRG CONSIDERATION

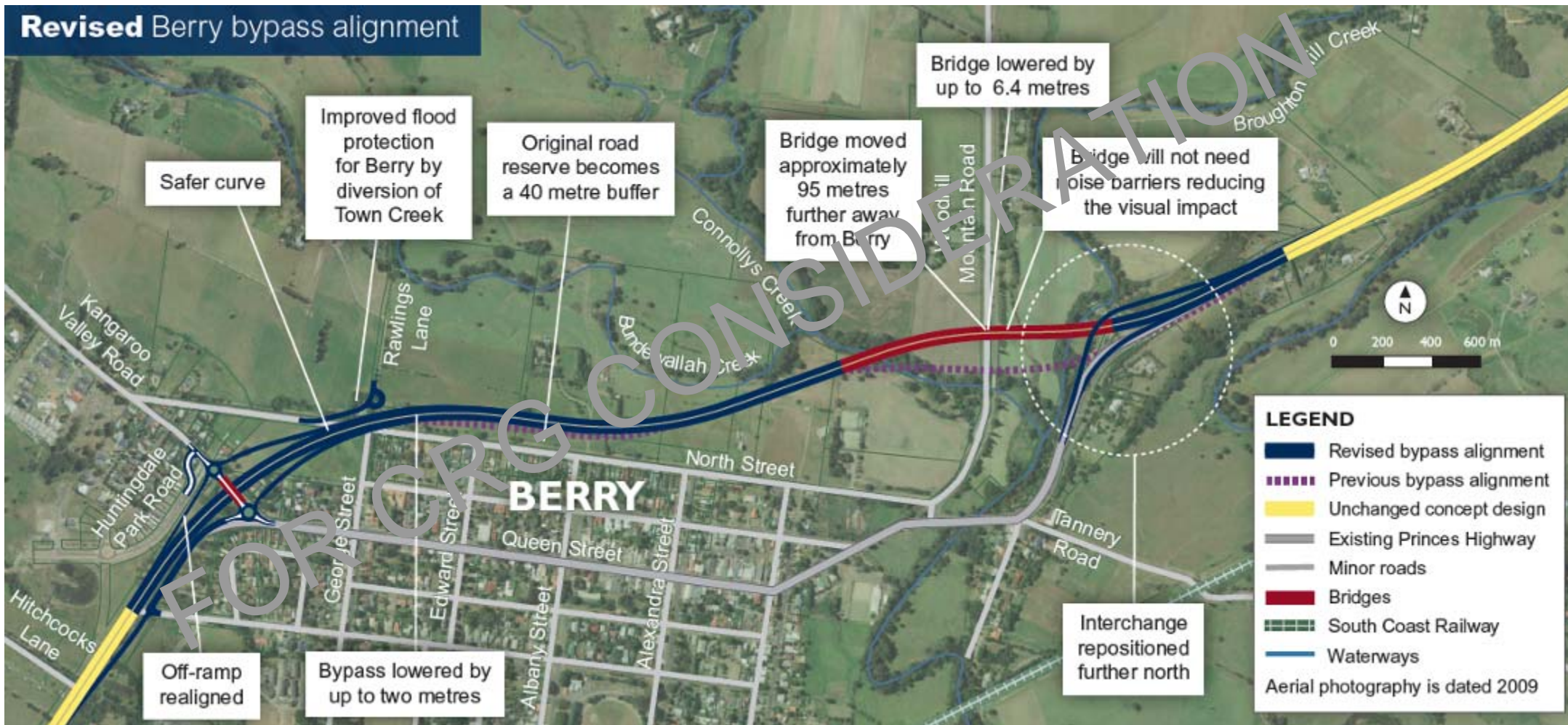
# Description of new alignment

## Berry Bypass



Transport  
Roads & Maritime  
Services

### Revised Berry bypass alignment

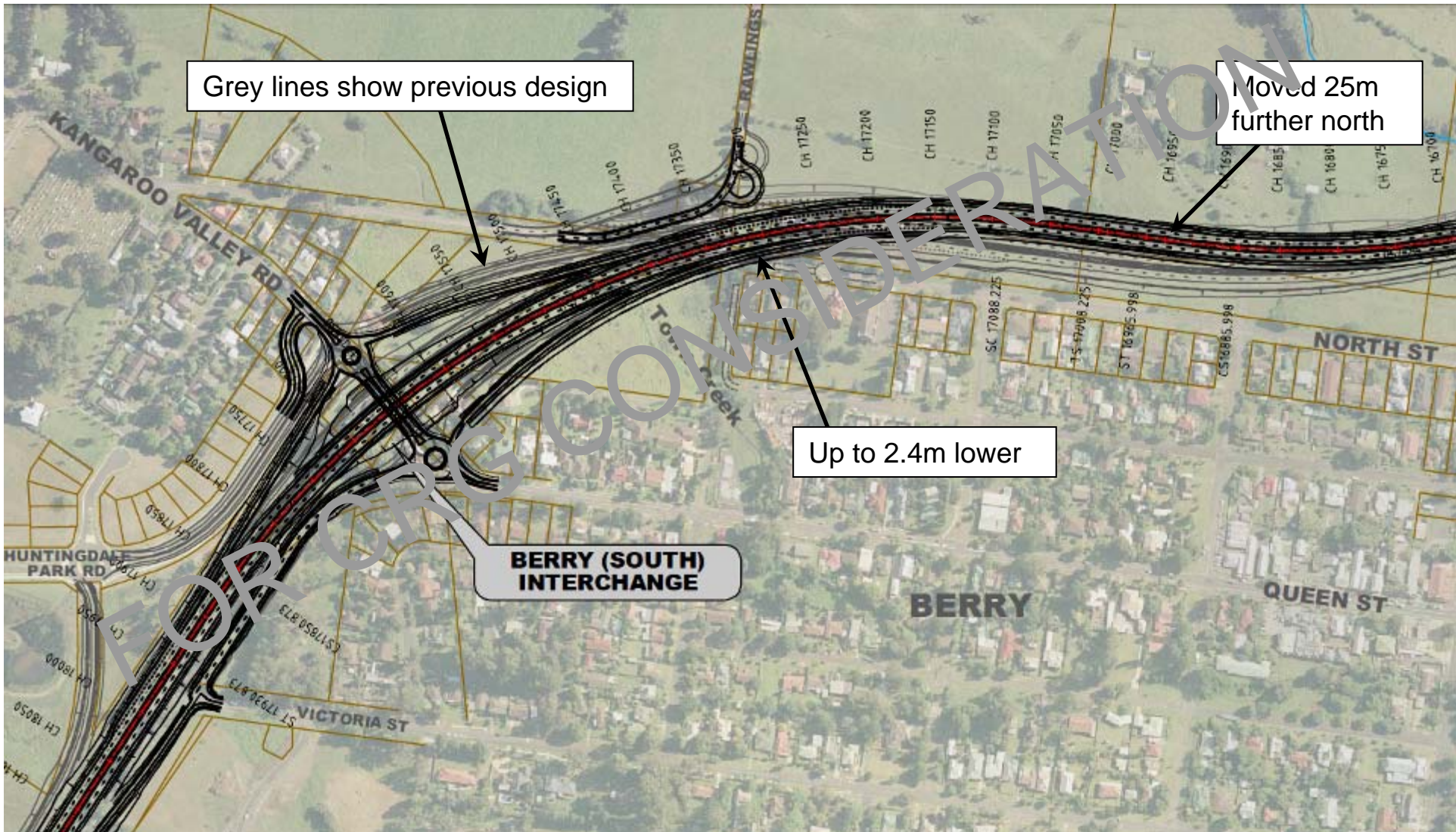


# Description of new alignment

## Berry Bypass - West



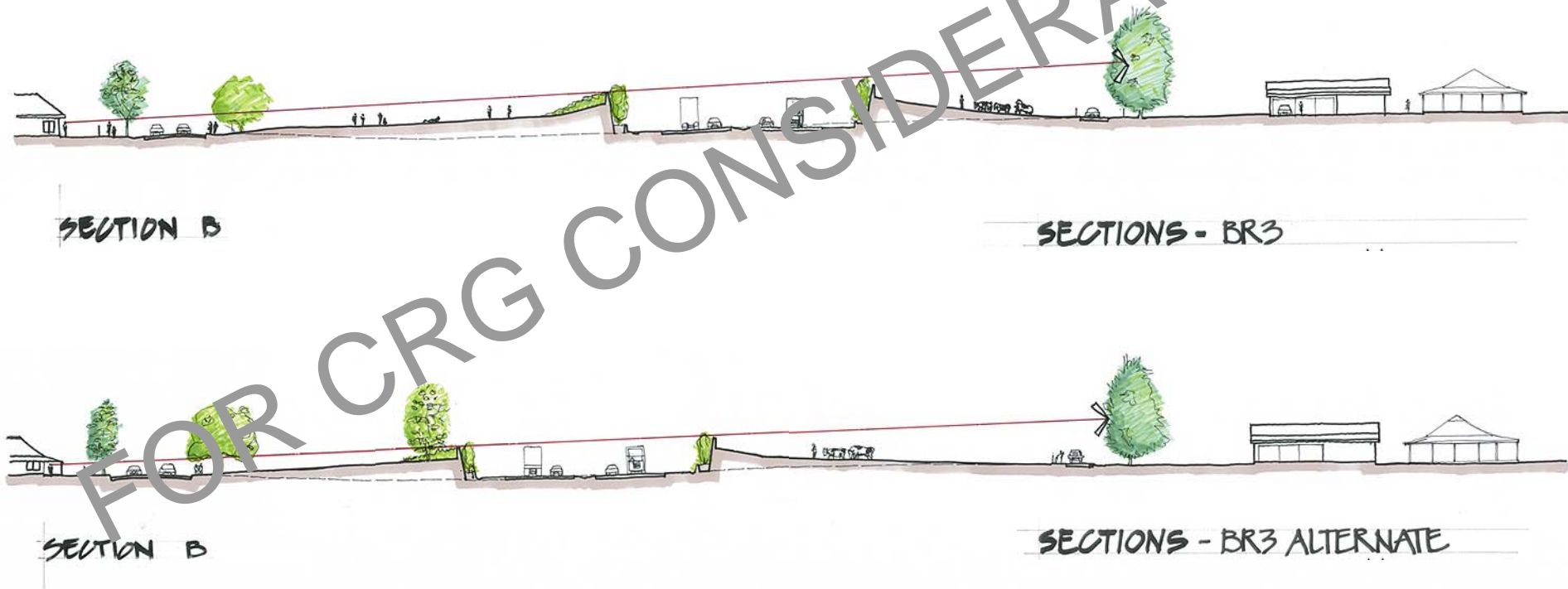
Transport  
Roads & Maritime  
Services



# Description of new alignment

## Berry Bypass – North Street Precinct

Recap from last crg meeting:

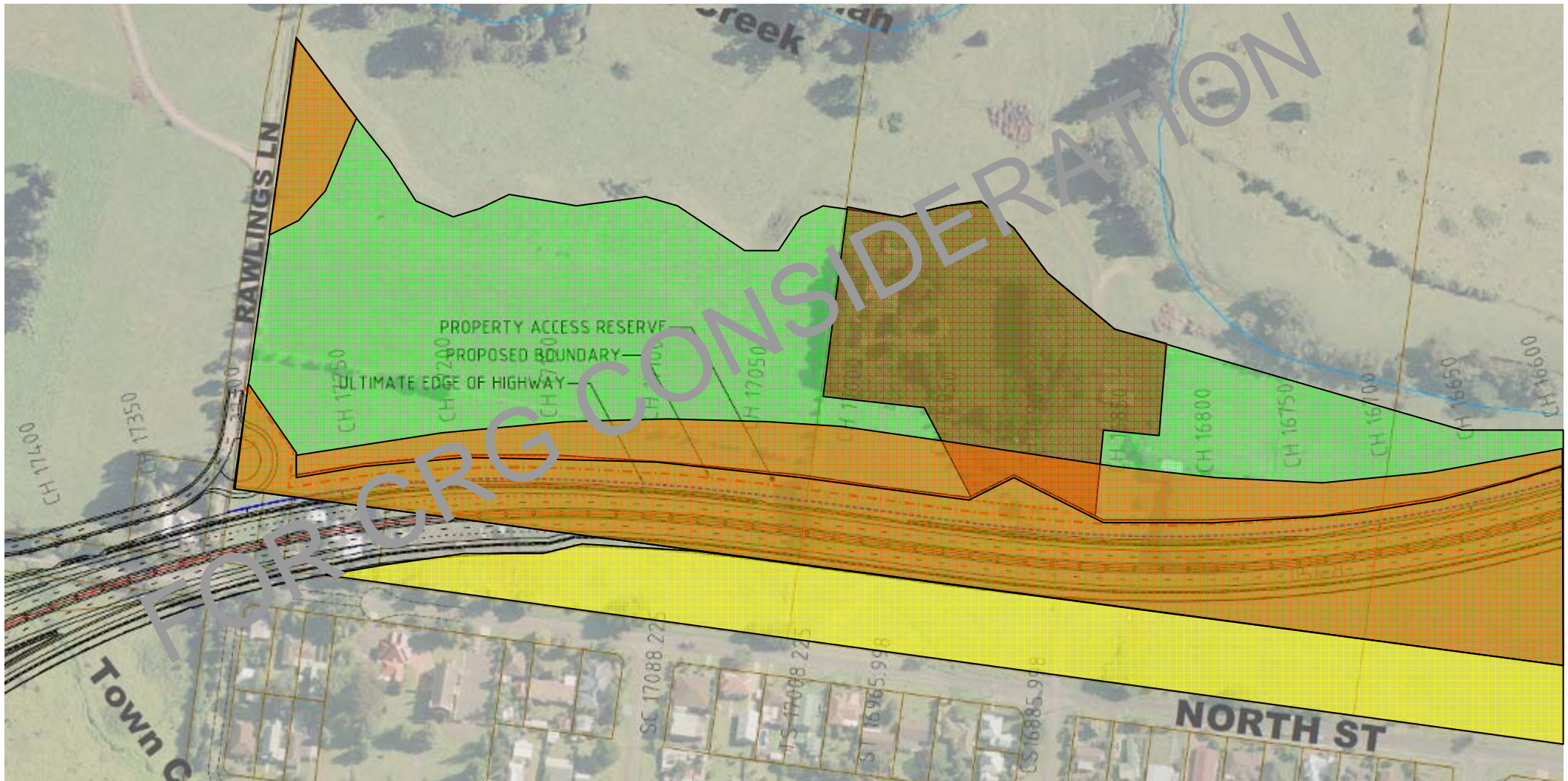


# Description of new alignment

## Berry Bypass – North Street Precinct



Transport  
Roads & Maritime  
Services



## Description of new alignment

### Berry Bypass – North Street Precinct



Transport  
Roads & Maritime  
Services

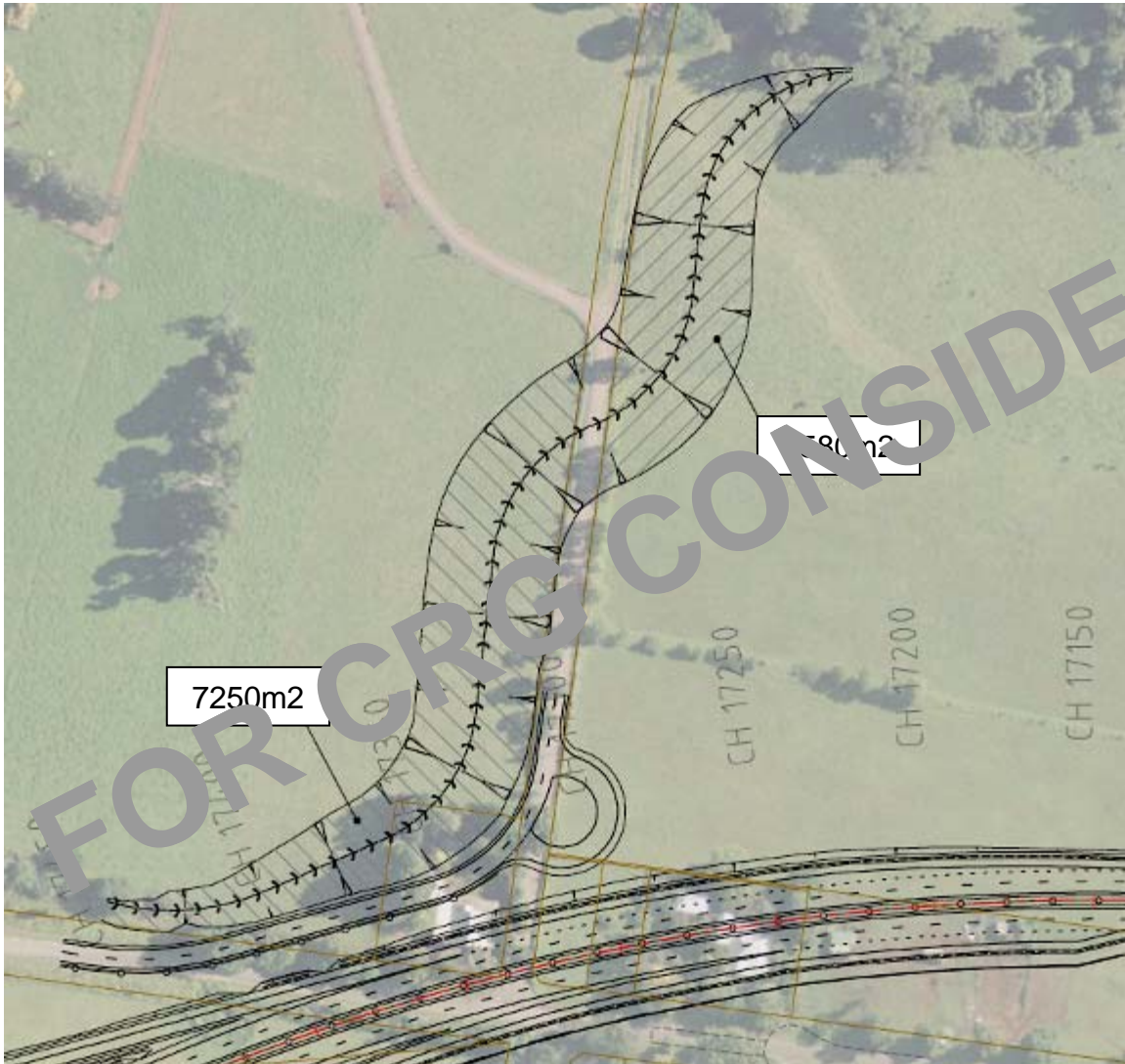
- Need to get widest buffer from North Street to new road
- Need to retain high land for farm viability
- Property access track linking Rawlings Lane will use more land
- Diversion of Town Creek will also take some high ground
- Shape of land – long and narrow – increases risk of cattle disease
- Land swap with turf farm not viable
- Final alignment uses less high ground and provides a 40m buffer to edge of North Street
- Total of 4.2 hectares required from farm representing 41% of productive pasture available

# Description of new alignment

## Berry Bypass – North Street Precinct



Transport  
Roads & Maritime  
Services



Indicative design of  
Town Creek diversion:

- Requires 0.72 Hectares of western farm
- Requires 0.45 Hectares of eastern farm
- Requires bridging of Rawlings Lane

# Description of new alignment

## Berry Bypass – North Street Precinct



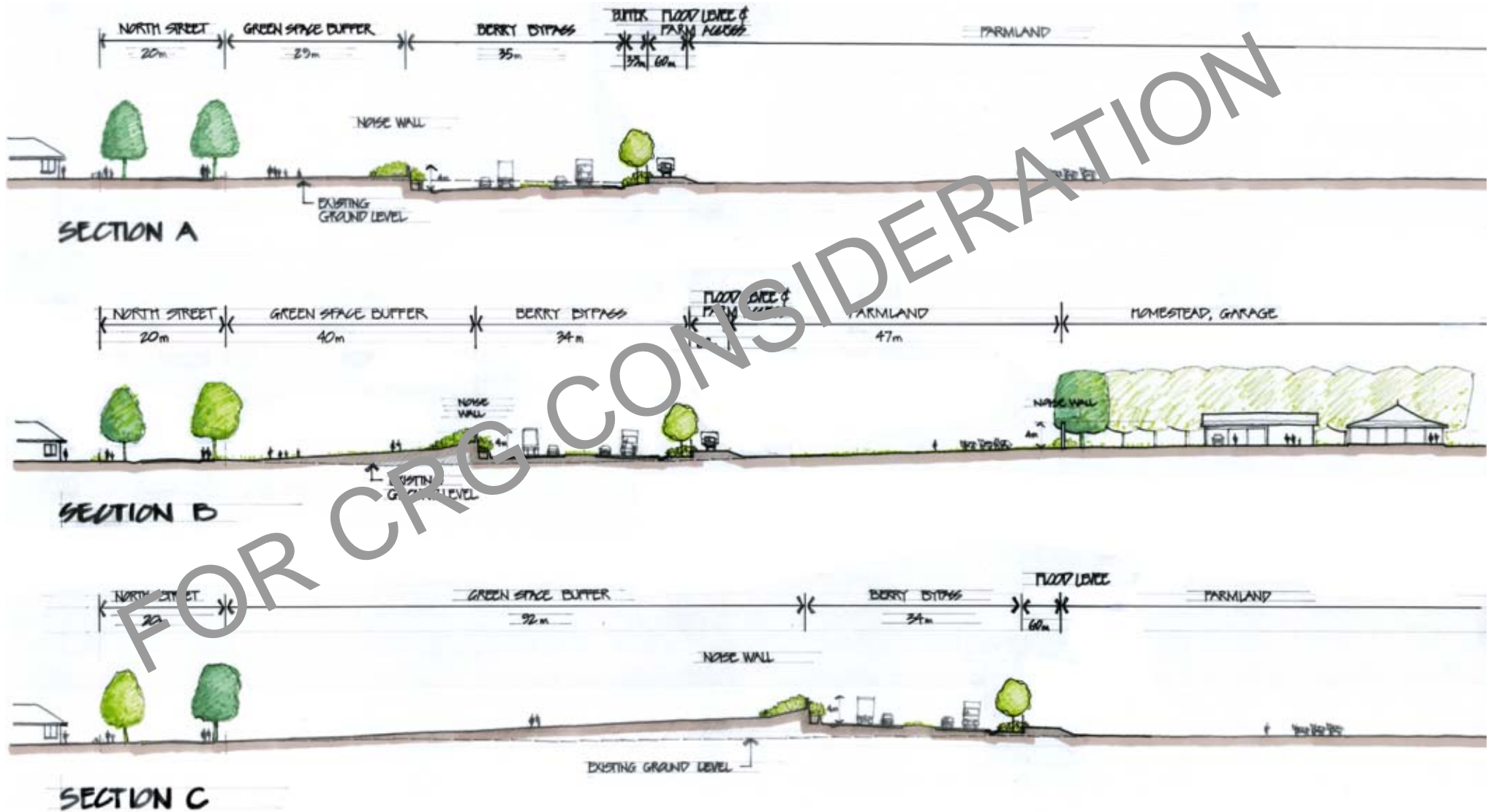


# Description of new alignment

## Berry Bypass – North Street Precinct



Transport  
Roads & Maritime  
Services



# Description of new alignment

## Berry Bypass – North Street Precinct



Transport  
Roads & Maritime  
Services

### LOCATION A



# Description of new alignment

## Berry Bypass – North Street Precinct



Transport  
Roads & Maritime  
Services

### LOCATION A



# Description of new alignment

## Berry Bypass – North Street Precinct



Transport  
Roads & Maritime  
Services

### LOCATION A



# Description of new alignment

## Berry Bypass – North Street Precinct



Transport  
Roads & Maritime  
Services

### LOCATION B



# Description of new alignment

## Berry Bypass – North Street Precinct



Transport  
Roads & Maritime  
Services

### LOCATION B



# Description of new alignment

## Berry Bypass – North Street Precinct



Transport  
Roads & Maritime  
Services

### LOCATION B



# Description of new alignment

## Berry Bypass – North Street Precinct



Transport  
Roads & Maritime  
Services

### LOCATION C





# Description of new alignment

## Berry Bypass – North Street Precinct



Transport  
Roads & Maritime  
Services

### LOCATION C



# Description of new alignment

## Berry Bypass – North Street Precinct



Transport  
Roads & Maritime  
Services

### LOCATION C





# Description of new alignment

## Berry Bypass – North Street Precinct



Transport  
Roads & Maritime  
Services

### LOCATION D



# Description of new alignment

## Berry Bypass – North Street Precinct



Transport  
Roads & Maritime  
Services

### LOCATION D



# Description of new alignment

## Berry Bypass – East

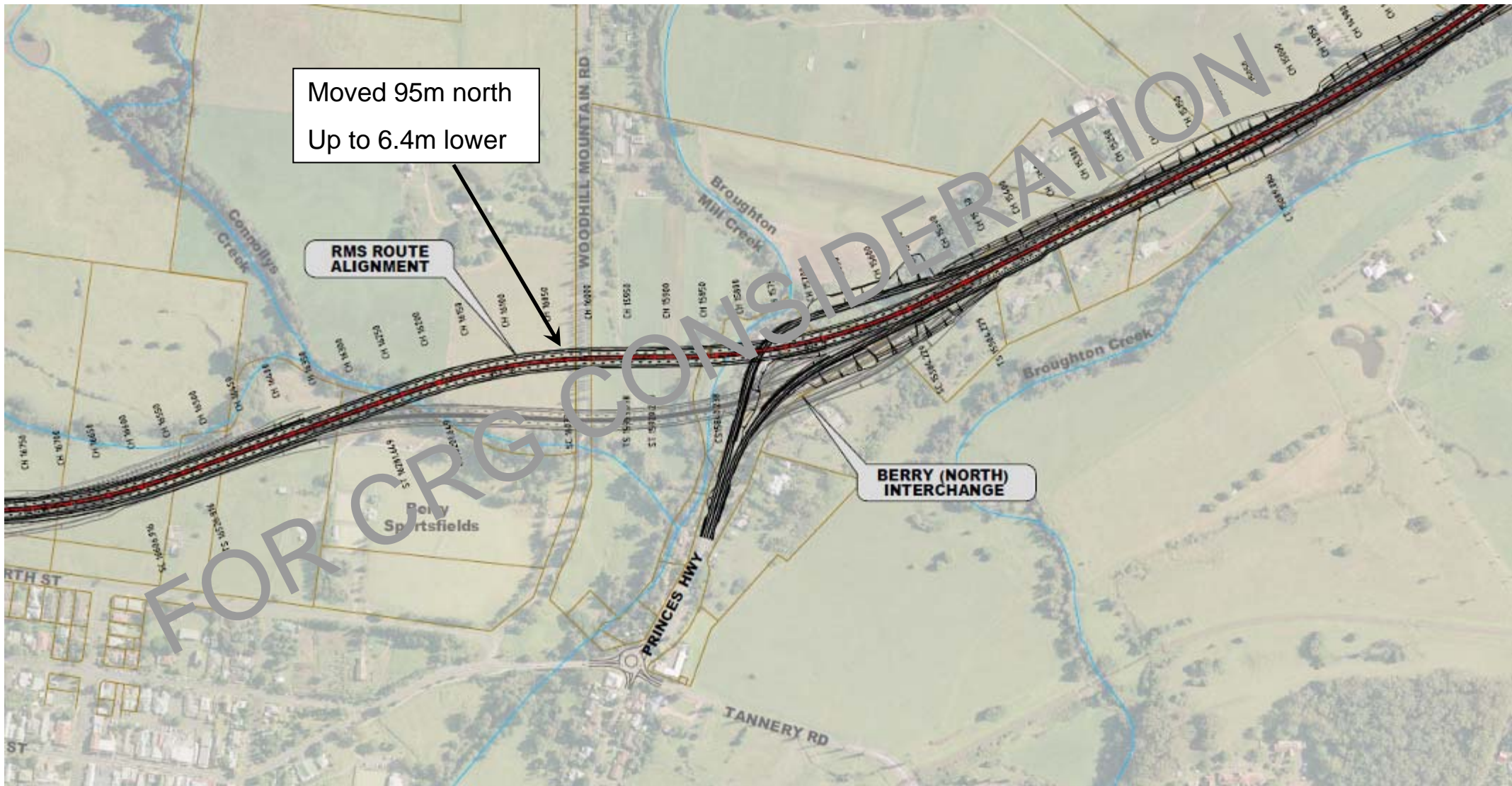


Transport  
Roads & Maritime  
Services

Moved 95m north  
Up to 6.4m lower

RMS ROUTE  
ALIGNMENT

BERRY (NORTH)  
INTERCHANGE



# Description of new alignment

## Berry Bypass – East



Transport  
Roads & Maritime  
Services



Example plank bridge



Example super-tee bridge

# Description of new alignment

## Berry Bypass – scope & estimated costs



Transport  
Roads & Maritime  
Services

	ORIGINAL ROUTE	NEW ALTERNATIVE 1	NEW ALTERNATIVE 2
EARTHWORKS	0m <sup>3</sup>	40,000m <sup>3</sup>	40,000m <sup>3</sup>
BRIDGE TYPE	Concrete girder (super-tee or equivalent)	Concrete girder (super-tee or equivalent)	Voided slab (concrete planks)
ESTIMATED COST	\$195M	\$200M	\$215M



## Berry Bypass - process from here



Transport  
Roads & Maritime  
Services

- Publish crg options review process report – 1 December
- Berry community meeting – 6 December
- Community submissions – 1 to 14 December
- Ministerial briefing – 19 December
- Announcement of preferred route – 20 December

FOR CRG CONSIDERATION

## Berry Bypass - process from here



Transport  
Roads & Maritime  
Services

## Berry Bypass Community meeting



Transport  
Roads & Maritime  
Services

Come to a community meeting to examine the progress on the Berry bypass.

A revised alignment has been developed through debate and discussions with residents in a community review group (see website for more information).

Time: **Cuppa at 6.30pm, meeting at 7.00pm**

When: **Tuesday 6 December 2011**

Where: **The Berry School of Arts, 19 Alexandra Street, Berry**

For more information on the project please call the project information line (**free call**) **1800 506 976**

or visit **[www.rta.nsw.gov.au/fbb](http://www.rta.nsw.gov.au/fbb)**