

Kangaroo Valley Road interchange and the **Victoria Street** precinct



Transport
Roads & Maritime
Services

FACT SHEET

AUGUST 2012

Roads and Maritime Services (RMS) is planning to close Victoria Street as part of the proposed Foxground and Berry bypass.

Since 2008 RMS has been looking at a treatment for Victoria Street in Berry as part of the Foxground and Berry bypass. Victoria Street currently connects to the Princes Highway at the southern edge of Berry.

Three options were considered and evaluated for the design as part of the highway upgrade:

- Maintaining two-way travel adjacent to the highway between Queen Street and Victoria Street with a southbound on-ramp south of Victoria Street.
- Providing one-way travel between Queen Street and Victoria Street with a southbound on-ramp south of Victoria Street.
- Closing Victoria Street (by creation of a cul-de-sac), with a southbound on-ramp from Queen Street providing access to the new bypass.

How Victoria Street closure was selected

With the community divided on which option is the best, RMS analysed these options and found that the closure of Victoria Street ranked marginally highest when considering the project objectives and the requirements of the Department of Planning and Infrastructure.

The key considerations for this area are to:

- Facilitate the future use of Mark Radium Park.
- Improve road safety, including pedestrian safety.

Community consultation

Earlier this year, RMS convened a community working group to review the issues raised by the community about the Kangaroo Valley Road interchange and the Victoria Street precinct.

At a meeting on 25 July 2012, RMS tabled an assessment of the three options and noted that the closure of Victoria Street was marginally more favourable when measured against project objectives. This assessment and any other relevant information which comes to hand will be published on the project website, which is regularly updated.

The working group remains divided in opinion on which is the best option for Victoria Street.

Next steps

RMS has advised the working group that additional investigations into options for Victoria Street would delay the environmental assessment. RMS will propose the closure option in the environmental assessment, but will also include the analysis of the three options so the community and the Department of Planning and Infrastructure will have all available information.

RMS has advised the Department of Planning and Infrastructure of the strong and divided community interest in the issue and also of the relatively minor differences between the three options assessed for Victoria Street. These issues will be considered by the Department when RMS submits the environmental assessment.

Members of the community can write a submission on this issue to the Department of Planning and Infrastructure once the environmental assessment is on public display, which is expected in late 2012.

RMS will provide traffic data and visual representations of the three options to assist interested members of the community with their submissions to the Department of Planning and Infrastructure during the exhibition period.

For more information:

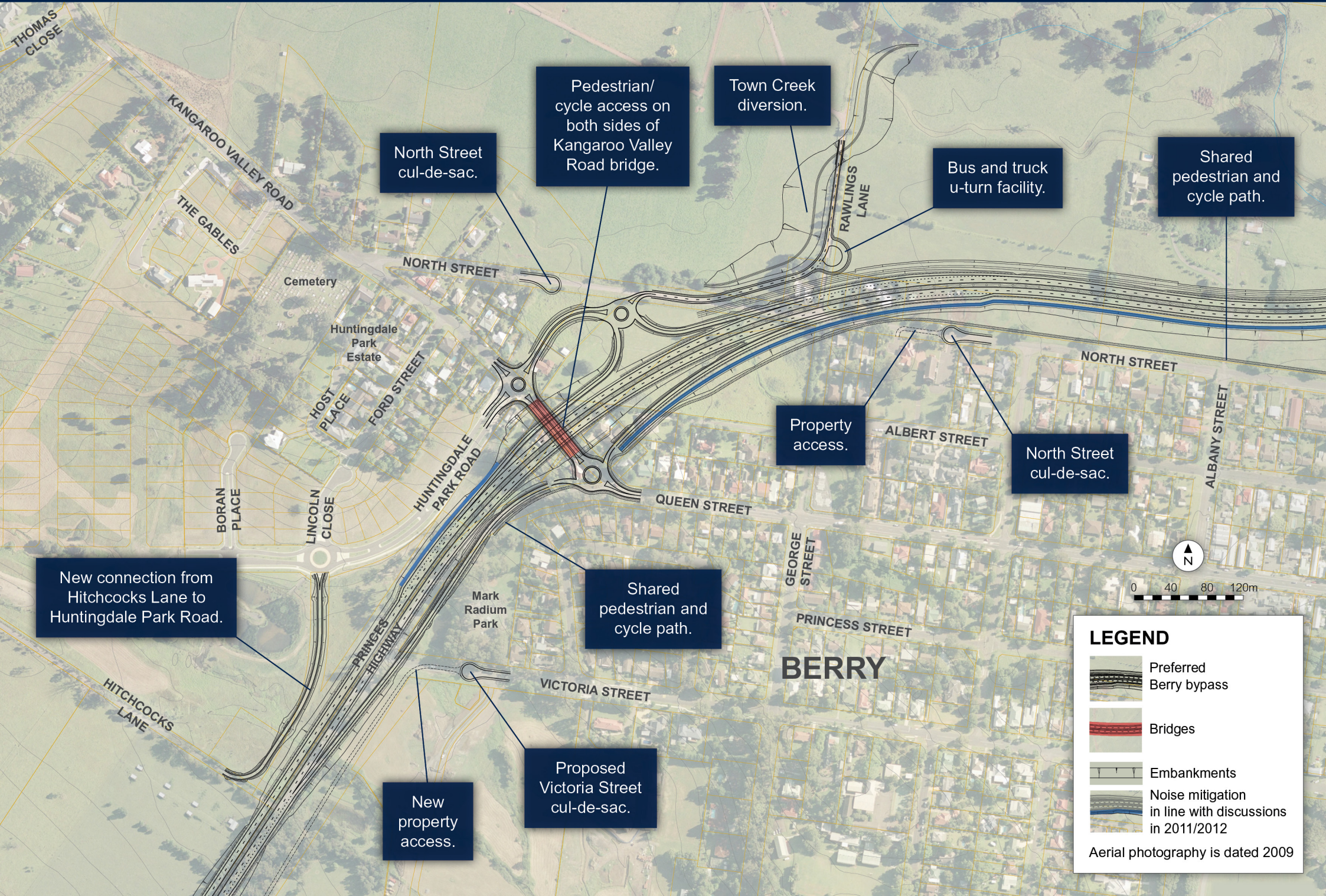
Post: Foxground and Berry bypass AECOM, PO Box Q410, QVB Post Office, Sydney NSW 2000

Project office: Shop 3/113 Queen Street Berry **Project information line:** 1800 506 976 (free call)

Email: foxgroundandberrybypass@rms.nsw.gov.au **Web** www.rms.nsw.gov.au/fbb

RMS 12.244

Kangaroo Valley Road interchange concept design for environmental assessment



North Street cul-de-sac.

Pedestrian/cycle access on both sides of Kangaroo Valley Road bridge.

Town Creek diversion.

Bus and truck u-turn facility.

Shared pedestrian and cycle path.

New connection from Hitchcocks Lane to Huntingdale Park Road.

Property access.





North Street cul-de-sac.

Shared pedestrian and cycle path.

New property access.

Proposed Victoria Street cul-de-sac.

LEGEND

-  Preferred Berry bypass
-  Bridges
-  Embankments
-  Noise mitigation in line with discussions in 2011/2012

Aerial photography is dated 2009