



**Transport**  
Roads & Maritime  
Services

# **Roads and Maritime Services**

Peter Letts

General Manager Project Management

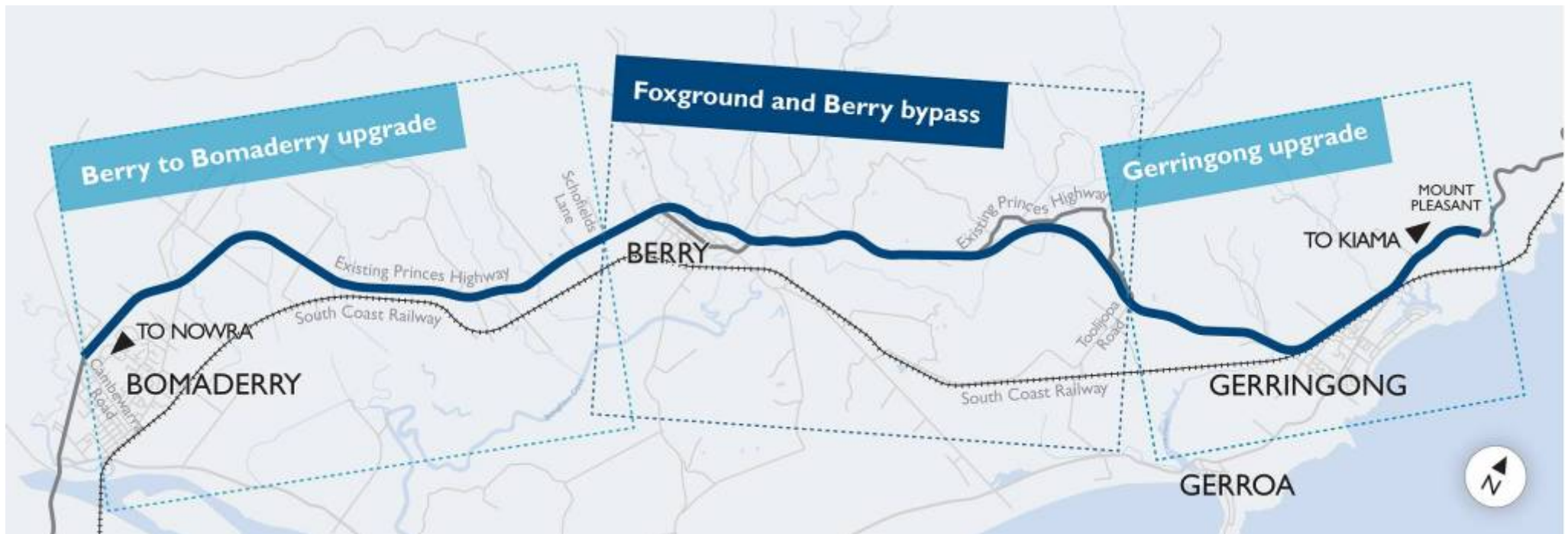
November 2012

---

# Gerringong to Bomaderry



Transport  
Roads & Maritime  
Services



## **First Term of NSW Government**

\$500M in funding towards the Gerringong to Bomaderry Princes Highway upgrade

## **NSW State budget 2012/13**

Gerringong Upgrade (Mount Pleasant to Toolijooa Road)	\$90M
Foxground and Berry Bypasses (Planning and Preconstruction)	\$9M
Berry to Bomaderry Upgrade (Planning)	\$1M

## **Gerringong Upgrade (Mount Pleasant to Toolijooa Road)**

- \$310 million project cost.
- Delivery by D & C contract
- Early works commenced July 2012 and mainline construction commenced September 2012
- Expected completion in 1<sup>st</sup> quarter 2015

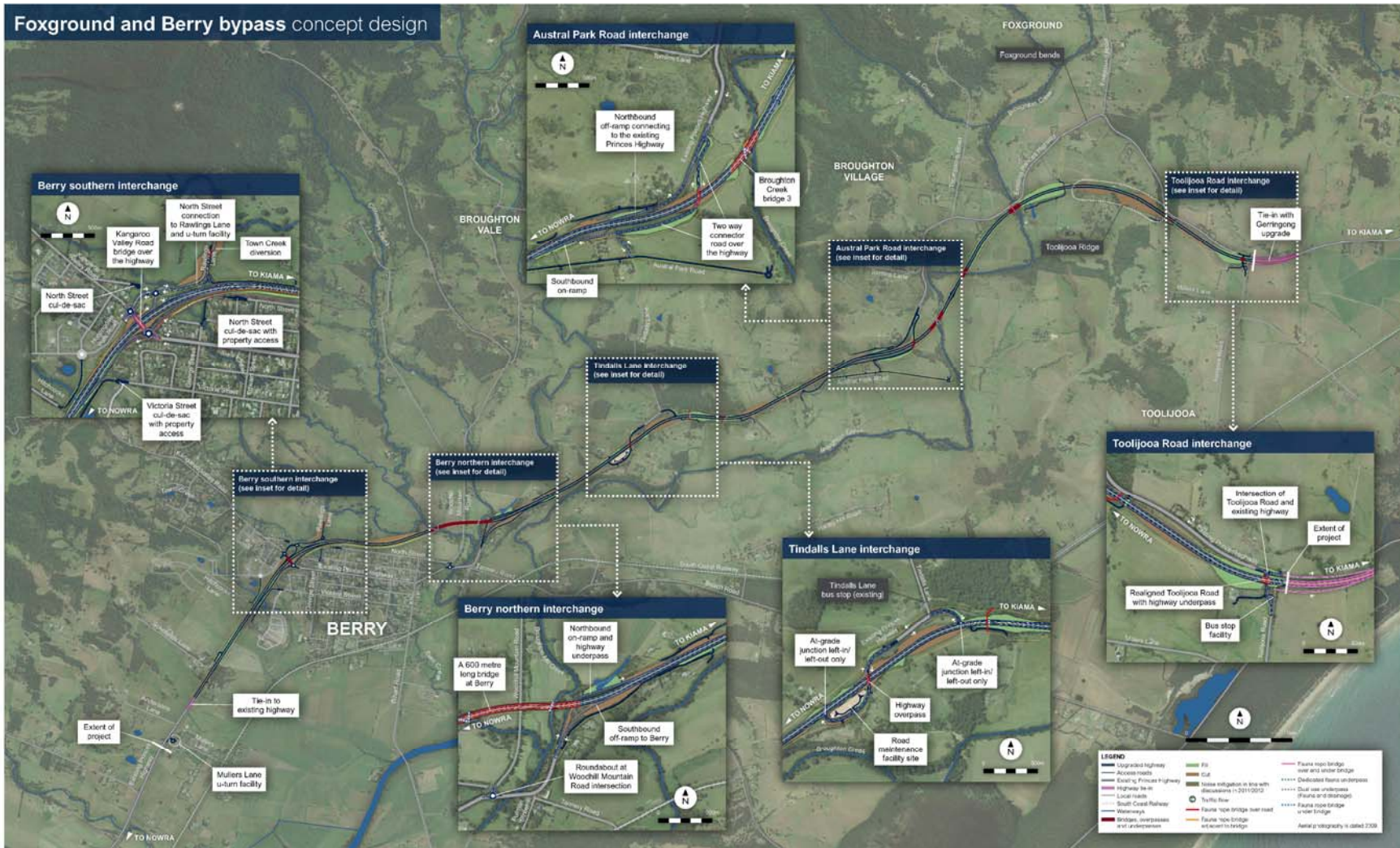
## **Foxground and Berry Bypasses**

- Concept Design undertaken
- Environmental Assessment on display from 14 November 2012
- Planned delivery by D & C contract
- Planning approval expected mid 2013
- ROI for D&C late November/early December 2012
- Announced completion by 2017/18

## Berry to Bomaderry Upgrade

- In planning

# Foxground to Berry Bypass - concept



# FBB - Southern bypass option



Transport  
Roads & Maritime  
Services



Transport  
Roads & Maritime  
Services



## **Flooding:**

Issue around Berry at Broughton Creek. Detailed report in Environmental Assessment; Appendix H.

**Geotechnical:** Covered generally in Environmental Assessment. Drilling undertaken in 2012 in Berry Bypass section. Further information in June 2012 report '*Report on route feasibility comparative cost estimates*'.

[http://www.rta.nsw.gov.au/roadprojects/projects/princes\\_hway/foxground\\_berry\\_bypass/southern\\_review/documents/findings\\_documents/route\\_feasibility\\_comparative\\_cost\\_estimates.pdf](http://www.rta.nsw.gov.au/roadprojects/projects/princes_hway/foxground_berry_bypass/southern_review/documents/findings_documents/route_feasibility_comparative_cost_estimates.pdf)

Some key features of the concept design include:

- 1.3 million m<sup>3</sup> total earthworks volume.
- 11 km project length including about 6.6 kilometres of new highway, including bypasses of the Foxground bends and the Berry township.
- Five grade separated interchanges at Toolijooa Road, Austral Park Road, Tindalls Lane and the northern and southern interchanges for Berry.
- A cutting about 25 metres deep at Toolijooa Ridge, bypassing the Foxground bends.
- Six lanes through the cutting at Toolijooa Ridge for 1.5 kilometres, providing two lanes and a climbing lane in each direction.

## key features (cont) :

- Three bridges crossing Broughton Creek (170m, 75m and 190m respectively) and a 600m long bridge at Berry over Broughton Mill Creek.
- An upgrade and extension of Austral Park Road.
- A new roundabout at the junction of Woodhill Mountain Road and the existing Princes Highway.
- A diversion of Town Creek into Bundewallah Creek.
- Proposed local road closures at North and Victoria streets in Berry.
- New property accesses and access roads. Left-in / left-out only for direct property access to the upgraded highway.
- Wildlife crossings (rope bridges and underpasses) to maintain existing wildlife corridors.

## **Environmental Assessment**

- Part 3A Transitional.
- Display 14/11/12-17/12/12.
- Planning Approval mid 2013.

## **Design and Construction**

- Invite Registrations of Interest late November/early December 2012 (concurrently with Pac Hwy).
- Invite tenders 2<sup>nd</sup> quarter 2013.
- Award contract 1<sup>st</sup> quarter 2014.
- Commence construction mid/late 2014.
- Completion by 2017/18.

## **ROI's for Foxground and Berry Bypasses and the two Pacific Highway projects**

- RMS will have one assessment team for ROI.
- RMS will target a short list of three for each project to go through tender phase.
- Each firm to indicate a project preference.
- A firm can bid for three but will only shortlisted for two projects.
- If a firm decides to bid on three projects, then must have three separate teams.... but if shortlisted for one or two projects, then firm may “enhance” the shortlisted team with team members from the other bid.
- If a firm wishes to tender for only one project they may submit the same team for both projects and indicate a preference. RMS will comply with preference where applicable.