

DECEMBER 2011

Dear resident

Foxground and Berry bypass, Princes Highway upgrade Pole indicators for noise wall adjacent to North Street

I am writing to you in response to questions about the white poles that have been placed on the northern side of North and George streets, Berry.

These poles have been put in place to help the community visualise the height of the proposed noise wall and its distance from homes along North Street.

This is in line with the revised Berry bypass alignment which has been lowered by up to two metres between Alexandra and George streets adjacent to North Street. This lowering reduces the visual impacts of the noise wall.

The Roads and Maritime Services (formerly Roads and Traffic Authority) has placed eight white poles on the northern side of North and George streets. Details of the location of the poles are shown over the page.

The poles have been placed approximately (to within half a metre) on the line of the proposed noise wall between Berry and the new road.

Based on a four metre high noise wall, the top of each pole indicates the height the noise wall.

Some poles are more than four metres high indicating that the road at those points will be on an embankment, above the existing ground (See 1, 2, 3, 4 and 8 shown on reverse).

Three poles (5, 6 and 7 shown on reverse) are less than four metres high indicating that the road at these locations will be sunk down below the existing ground.

The visual impact of the noise wall could be reduced by creating gently sloping hills running up towards it, or by building grassy mounds with some planted bushes. Please see the urban design cross section on the reverse showing an example of this.

RMS recognises that there is work to be done on the look and feel of this area and this will be discussed with the community in the first quarter of 2012.

If you require further information or would like to speak to a member of the project team, please call the project information line (free call) 1800 506 976. More information is on the project website www.rms.nsw.gov.au/fbb.

Yours faithfully



Ron de Rooy
Senior Project Manager

For more information:

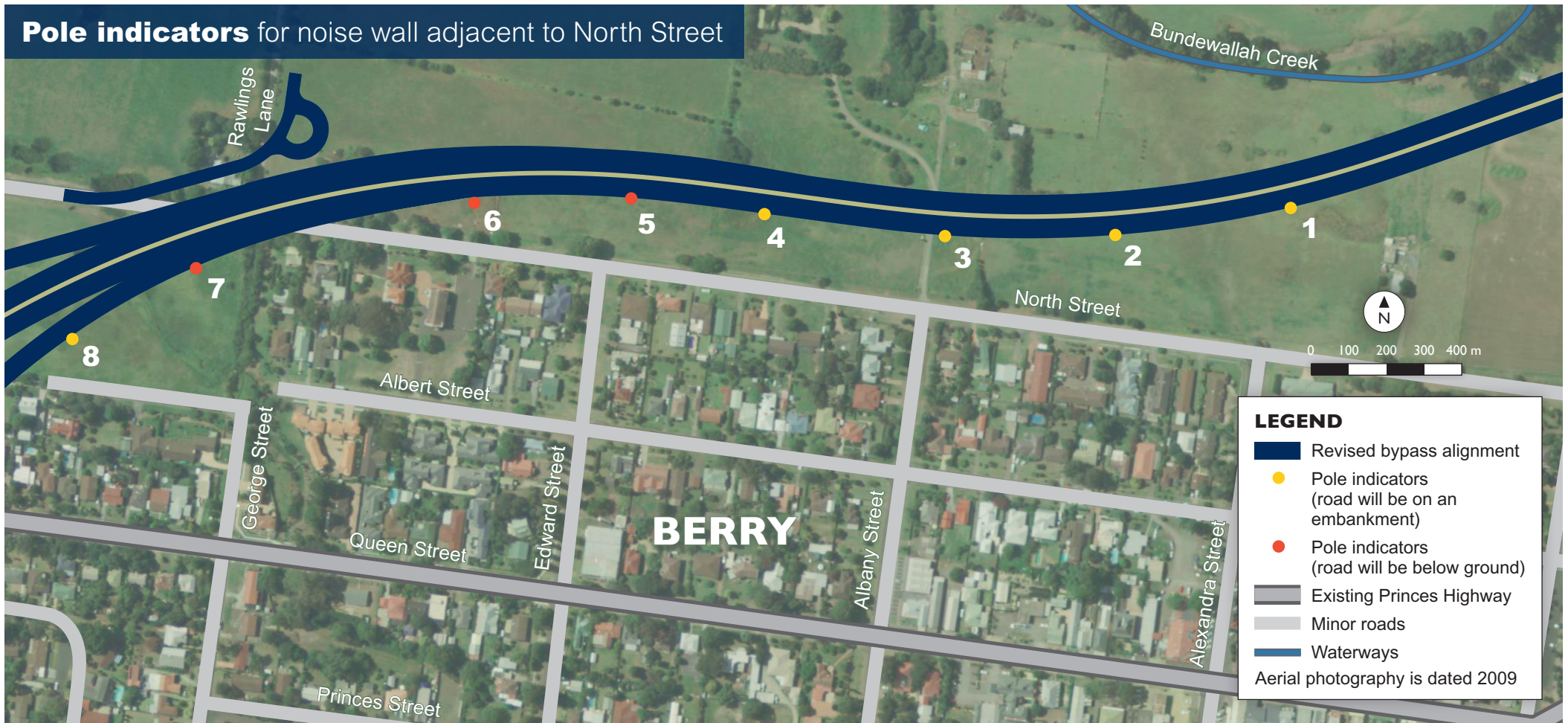
Email foxgroundandberrybypass@rms.nsw.gov.au / **web** www.rms.nsw.gov.au/fbb

phone 1800 506 976 (free call) project information line

Foxground and Berry bypass, AECOM, PO Box Q410, QVB Post Office, Sydney NSW 2000

Berry project office (Broughton Court) shop 3/113 Queen Street, Berry

Pole indicators for noise wall adjacent to North Street



Urban design cross section

