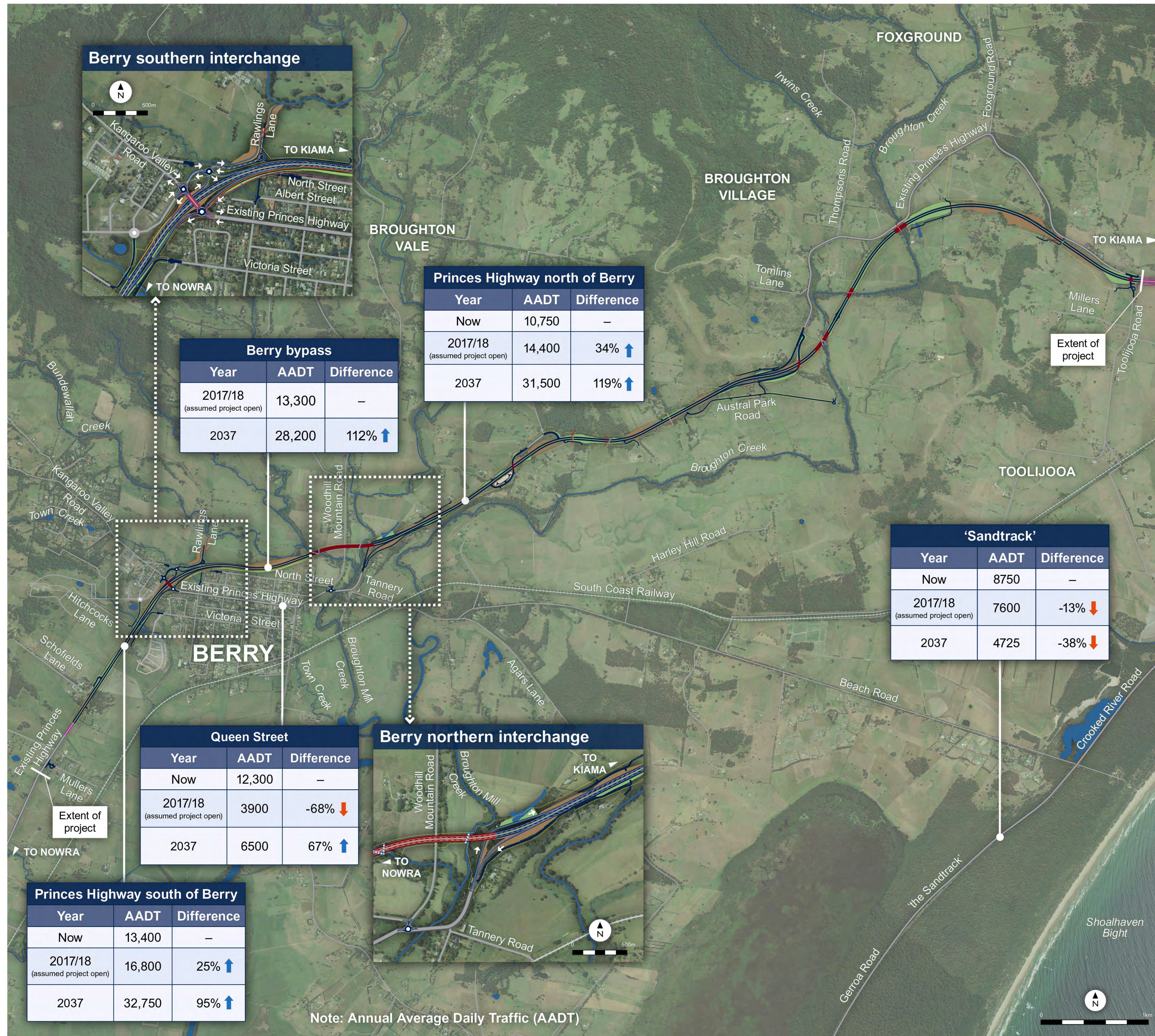


# Traffic and transport

Foxground and Berry bypass Princes Highway upgrade

NOVEMBER 2012

ENVIRONMENTAL ASSESSMENT

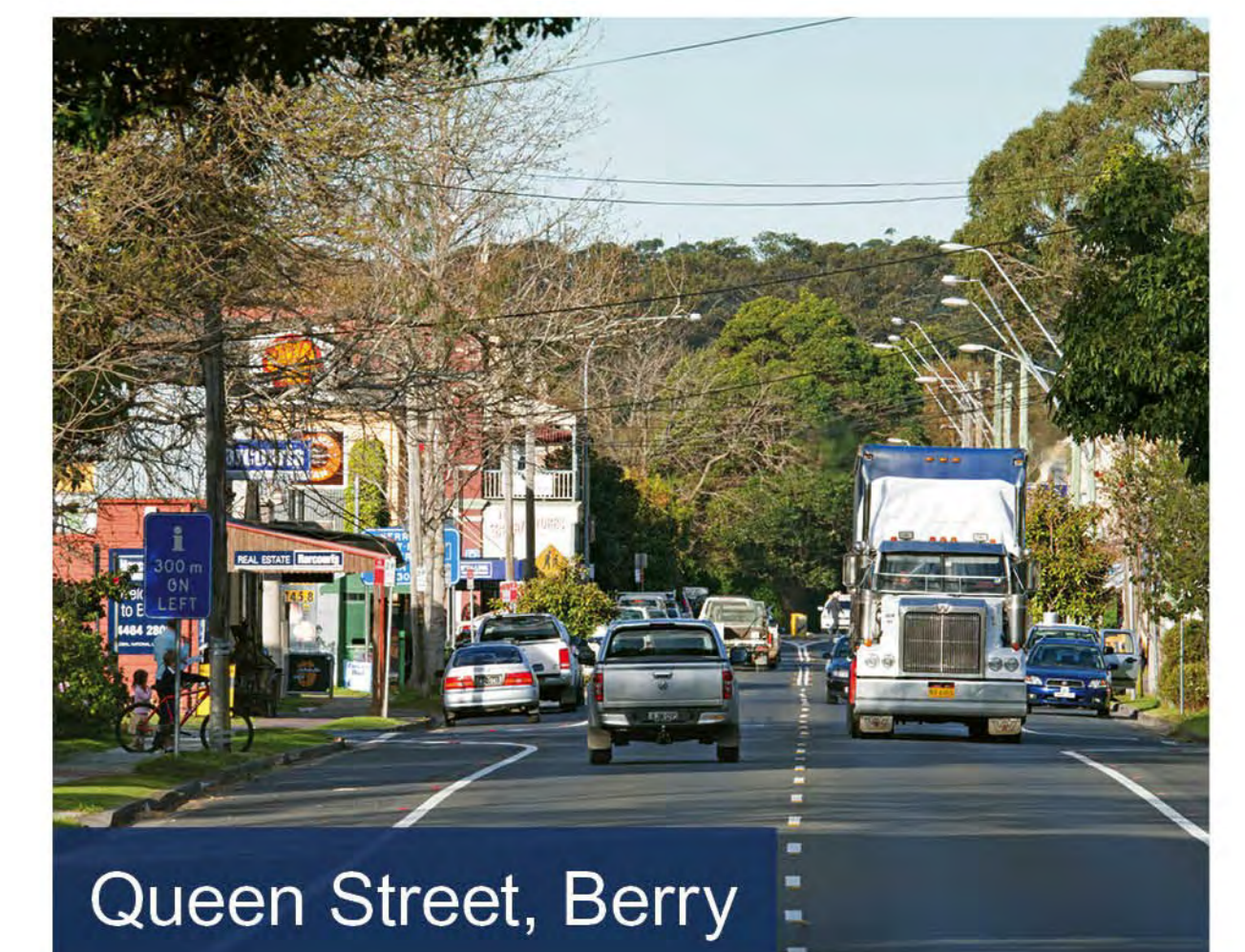


## Three key findings from the traffic and transport assessment

- Significantly decreased traffic volumes along Queen Street in Berry.
- Significantly improved road safety in Berry, along the upgraded highway and on the 'Sandtrack'.
- Greatly improved traffic efficiency along the upgraded highway and the 'Sandtrack'.

## Overview of the traffic and transport assessment

- Traffic volumes on Queen Street would reduce by around two thirds from 12,300 now to 3900 vehicles per day in 2017.
- The Berry bypass would carry around 13,300 vehicles per day or 77 per cent of the total north-south traffic passing Berry on opening, significantly improving pedestrian safety in Berry.
- Traffic splits between the Princes Highway and the 'Sandtrack' are estimated to change:
  - 60 per cent / 40 per cent now.
  - 69 per cent / 31 per cent on opening the Foxground and Berry bypass.
  - 87 per cent / 13 per cent in 2037.
- Total crashes on the Princes Highway in the project area would be reduced by an estimated 64 per cent.
- Predicted service levels for all highway and local road locations is Level of Service C or better, which represents uncongested free flow conditions for all peak periods in 2037.
- Severity of crashes significantly reduced through the introduction of a median barrier, ramps and left-in/left-out only junctions.



**LEGEND**

- Upgraded highway
- Access roads
- Existing Princes Highway
- Highway tie-in
- Local roads
- South Coast Railway
- Waterways
- Bridges, overpasses and underpasses
- Fill
- Cut
- Noise mitigation in line with discussions in 2011/2012
- Traffic flow
- Fauna rope bridge over road
- Fauna rope bridge adjacent to bridge
- Fauna rope bridge over and under bridge
- Dedicated fauna underpass
- Dual use underpass (Fauna and drainage)
- Fauna rope bridge under bridge

Aerial photography is dated 2009.