



Berry Bypass Urban Design Strategy

Kangaroo Valley Road Interchange + Victoria Street

8 March 2012

CM⁺

Contents

- Setting
- South Approach
- Site Analysis
- Urban Design Issues
- Urban Design Opportunities



CM⁺









© 2012 Google. Report a problem. Image Date: January 2010







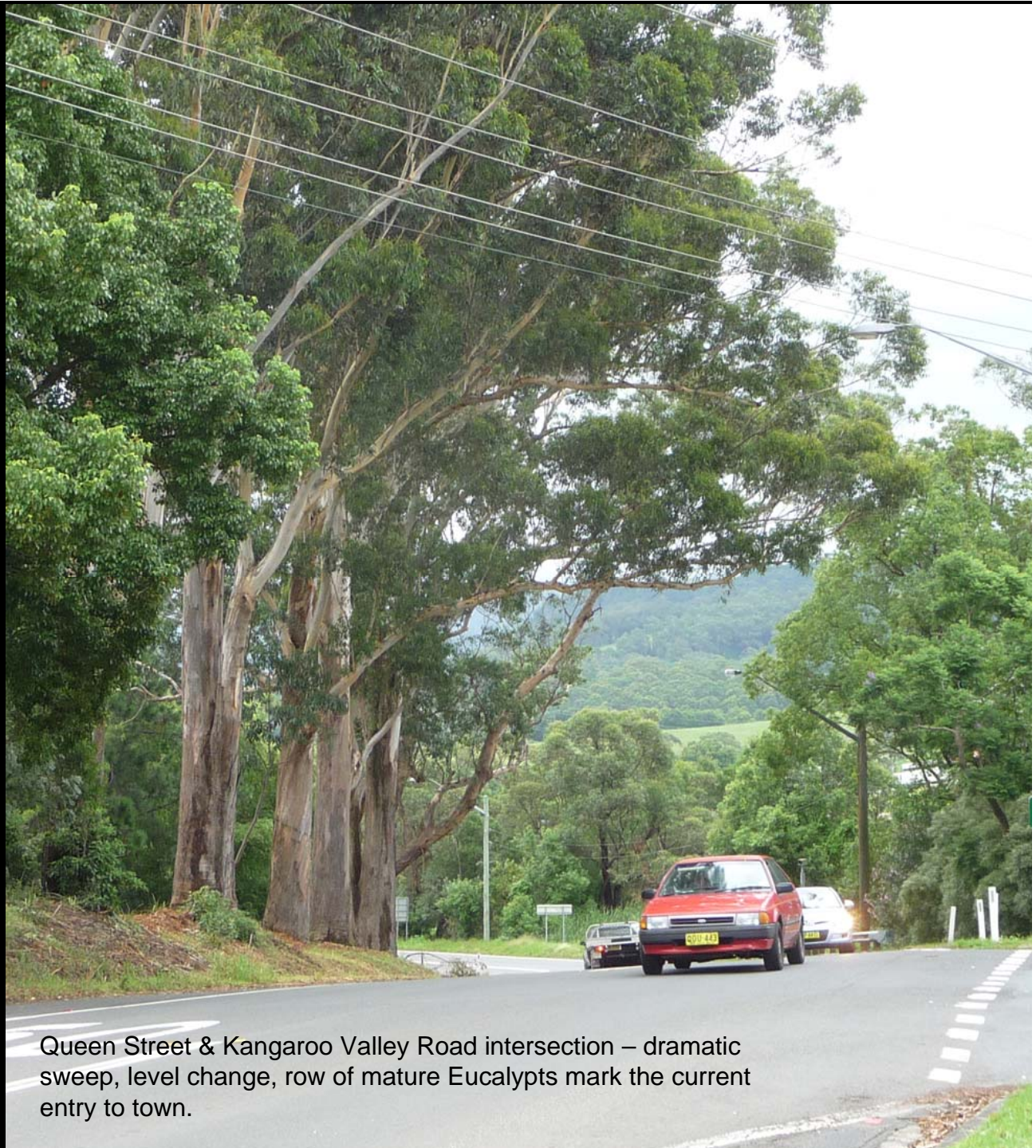


CM⁺

Attractive Queen Street vista south, to proposed Kangaroo Valley Road Interchange.



CM⁺

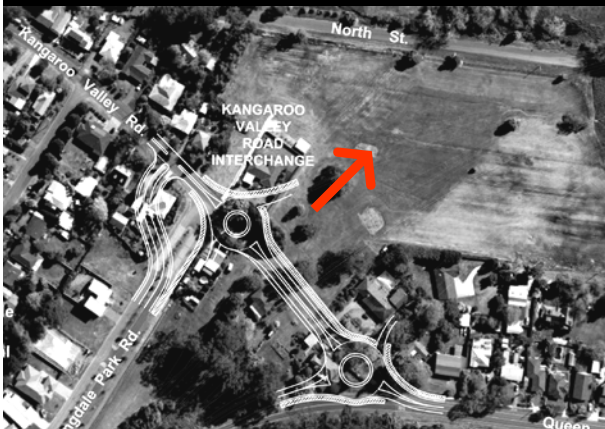


Queen Street & Kangaroo Valley Road intersection – dramatic sweep, level change, row of mature Eucalypts mark the current entry to town.

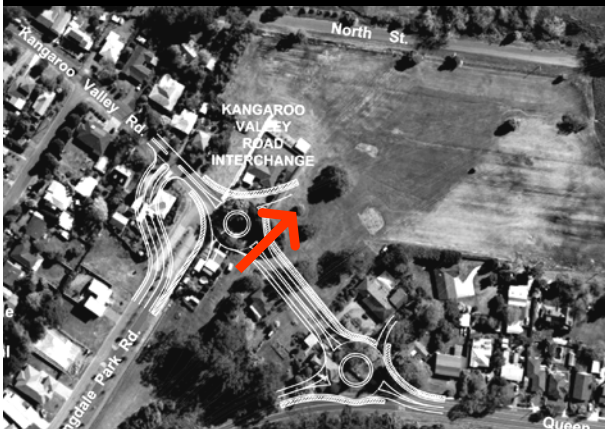


CM⁺

Dramatic northern panorama from the middle of the proposed Kangaroo Valley Road Interchange.



CM⁺



CM⁺

Existing residential rear fences fronting Queen Street.



CM⁺

Opportunity to complete footpath link from Queen Street to Mark Radium Park.



CM⁺

The attractive mature stands of Eucalypts of Mark Radium Park.



CM⁺

Existing Mark Radium Park footpath system.



CM⁺

Victoria Street vista west to Princes Highway – possible location for street closure and extension to Mark Radium Park.



CM⁺

Victoria Street view east, entry to The Arbour retirement village on right.





An abundance of signage detracts from the arrival experience.



CM⁺

Huntingdale Park residential estate entry off Kangaroo Valley Road.



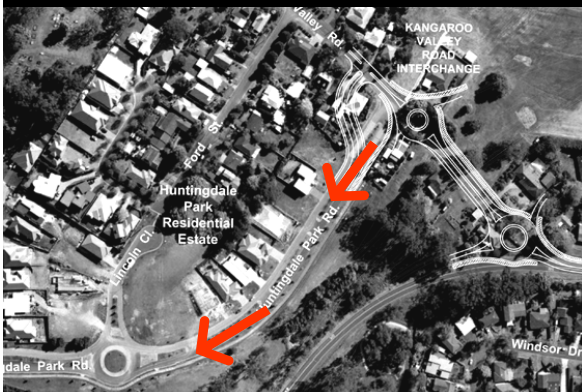
CM⁺

Distinctive sandstone entry signage establishes estate character.



CM⁺

Typical Huntingdale Park streetscape character.



CM⁺

Large retaining wall supports east side of Huntingdale Park Road.

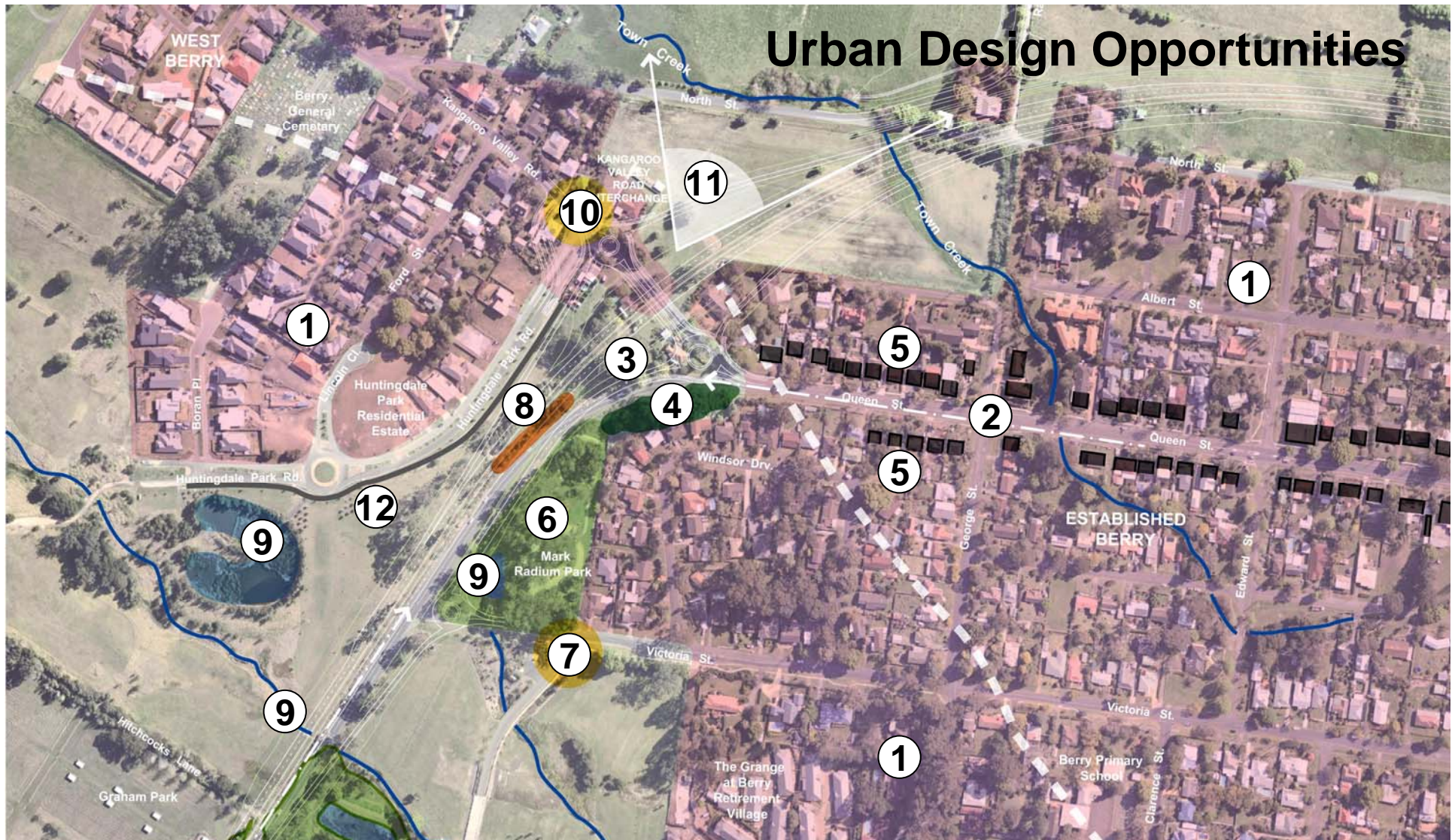


CM⁺

Kangaroo Valley Road streetscape – Existing Huntingdale Park entry and properties potentially impacted by relocation of entry.

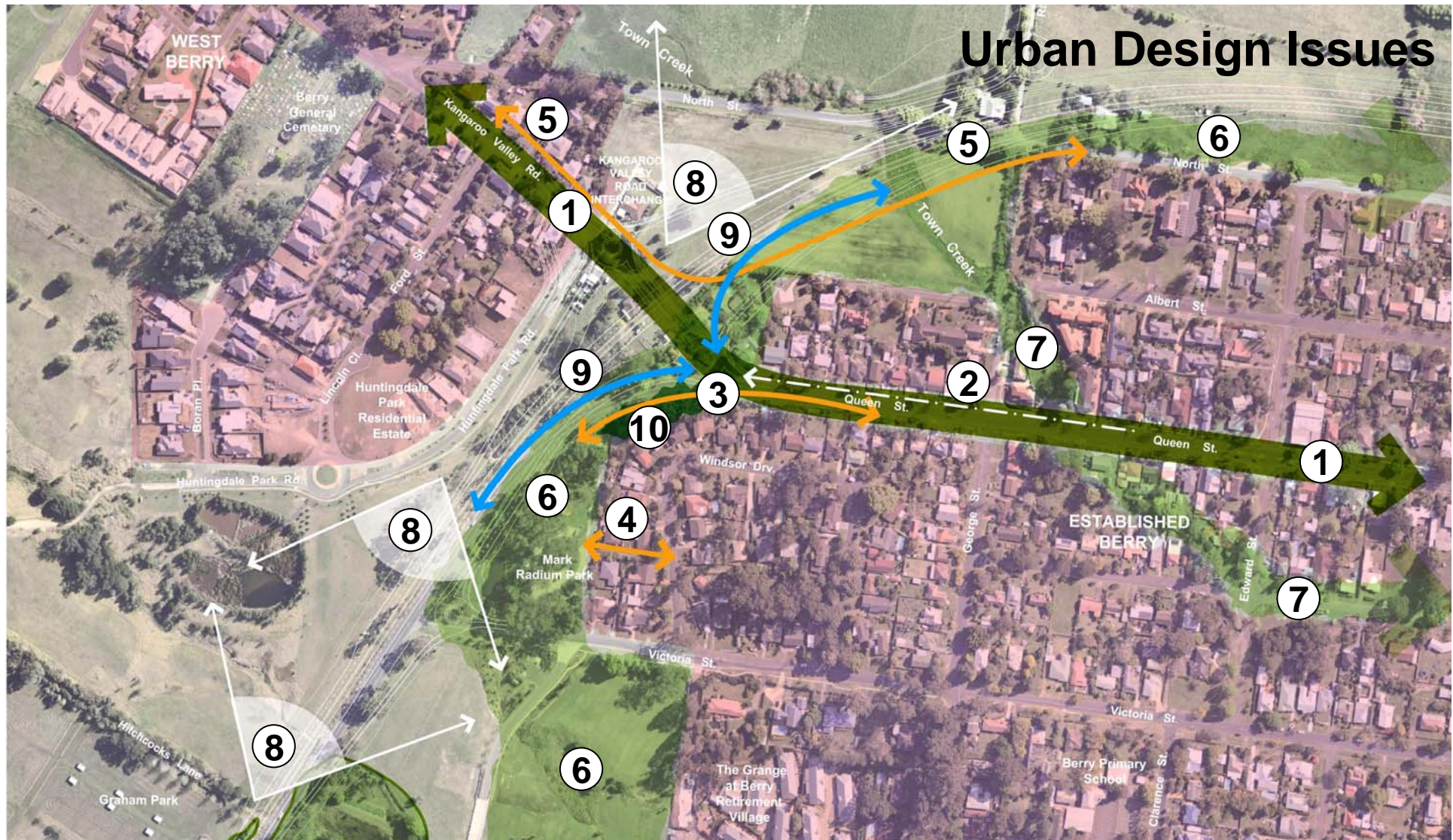


Urban Design Opportunities



1. Urban development consolidated to the east and west.
2. Attractive streetscape vista west to the proposed interchange.
3. Queen Street falls away dramatically at its western end.
4. Attractive tall Eucalypt trees mark arrival.
5. Main Street residential is setback with front gardens.
6. Preserve integrity of Mark Radium Park.
7. Limit through traffic on Victoria Street.
8. Profusion of signage detracts from arrival.
9. Waterways, wetlands and ponds - characteristic valley landscape.
10. Huntingdale Park entry establishes estate branding.
11. Attractive panoramic views of rural landscape/escarpment.
12. Huntingdale Park Road retaining wall is visually prominent.

Urban Design Issues

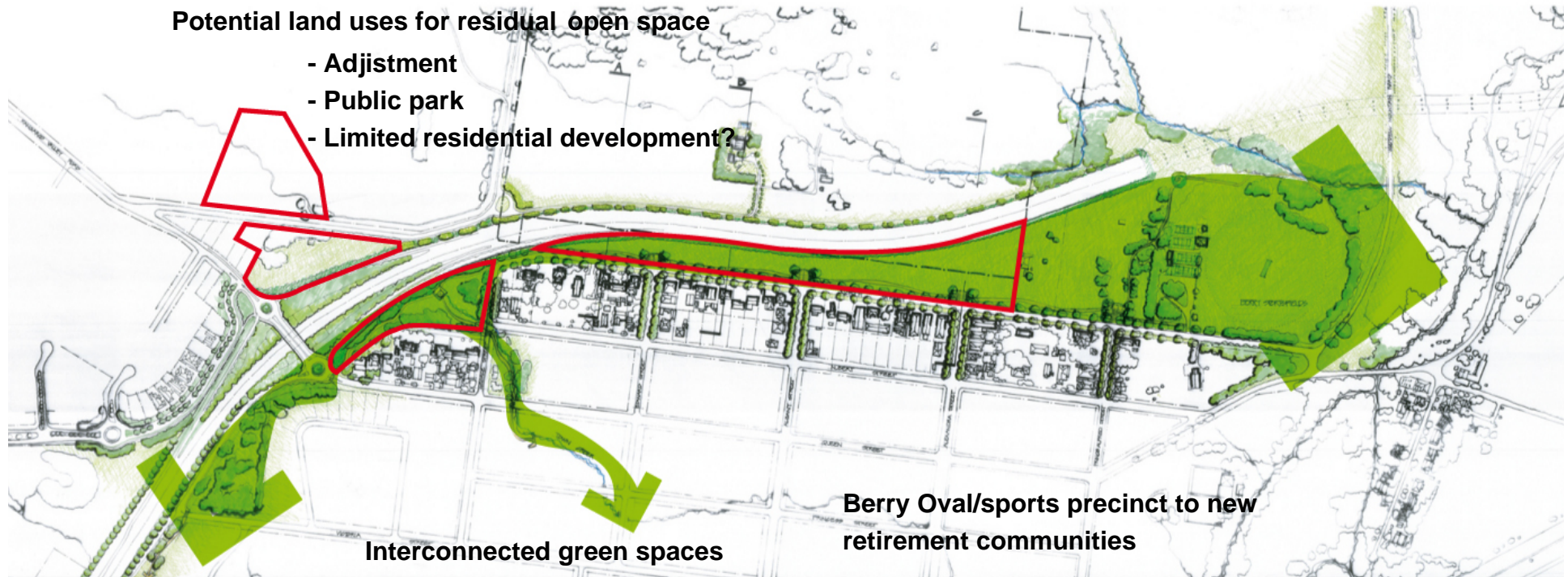


1. Establish a continuity of streetscape from Queen Street to Kangaroo Valley Road.
2. Provide vista along Queen Street.
3. Provide Queen Street to Mark Radium Park pedestrian connection.
4. Provide path to Windsor Drive residential neighbourhood.
5. Provide recreational pathway from Kangaroo Valley Rd to North St.

6. Establish an arc of interconnected green spaces.
7. Establish recreational corridor along Town Creek alignment.
8. Capture attractive views in Bypass driving experience.
9. Establish attractive Berry township arrival experience.
10. Incorporate Eucalypts into township arrival experience.

Potential land uses for residual open space

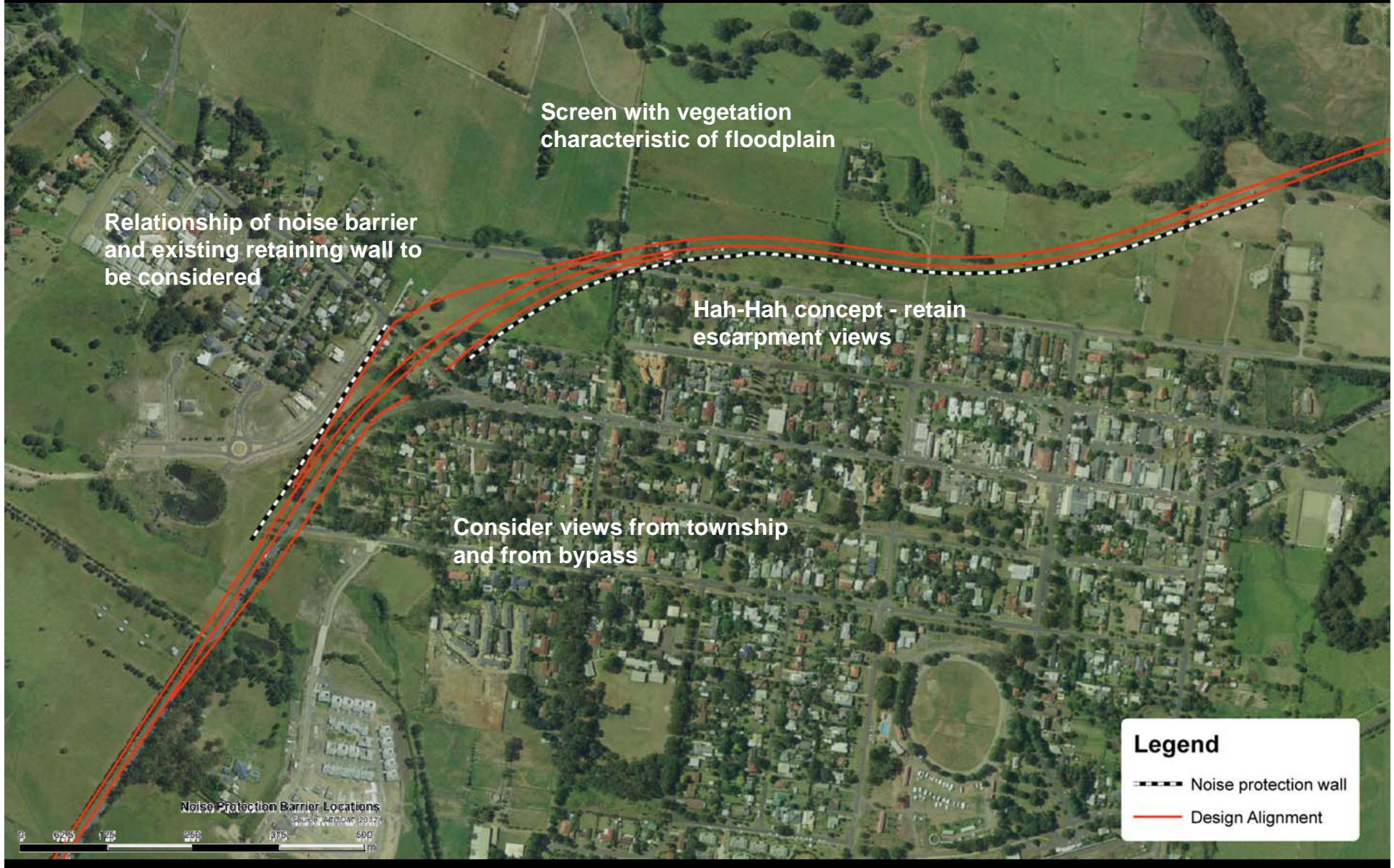
- Adjustment
- Public park
- Limited residential development?



Interconnected green spaces

Berry Oval/sports precinct to new retirement communities





CM⁺

Precedents



CM⁺



CM⁺



CM⁺



CM⁺



CM⁺

Precedents - Landscape Batters





www.cmplus.com.au

- + Architecture
- + Urban Design
- + Masterplanning
- + Heritage
- + Interiors
- + Industrial Design
- + Graphics
- + Landscape
- + Animations
- + Sustainability