

Berry Bypass (Dissection)

Kangaroo Valley Road Interchange

Victoria Street & Mark Radium Park

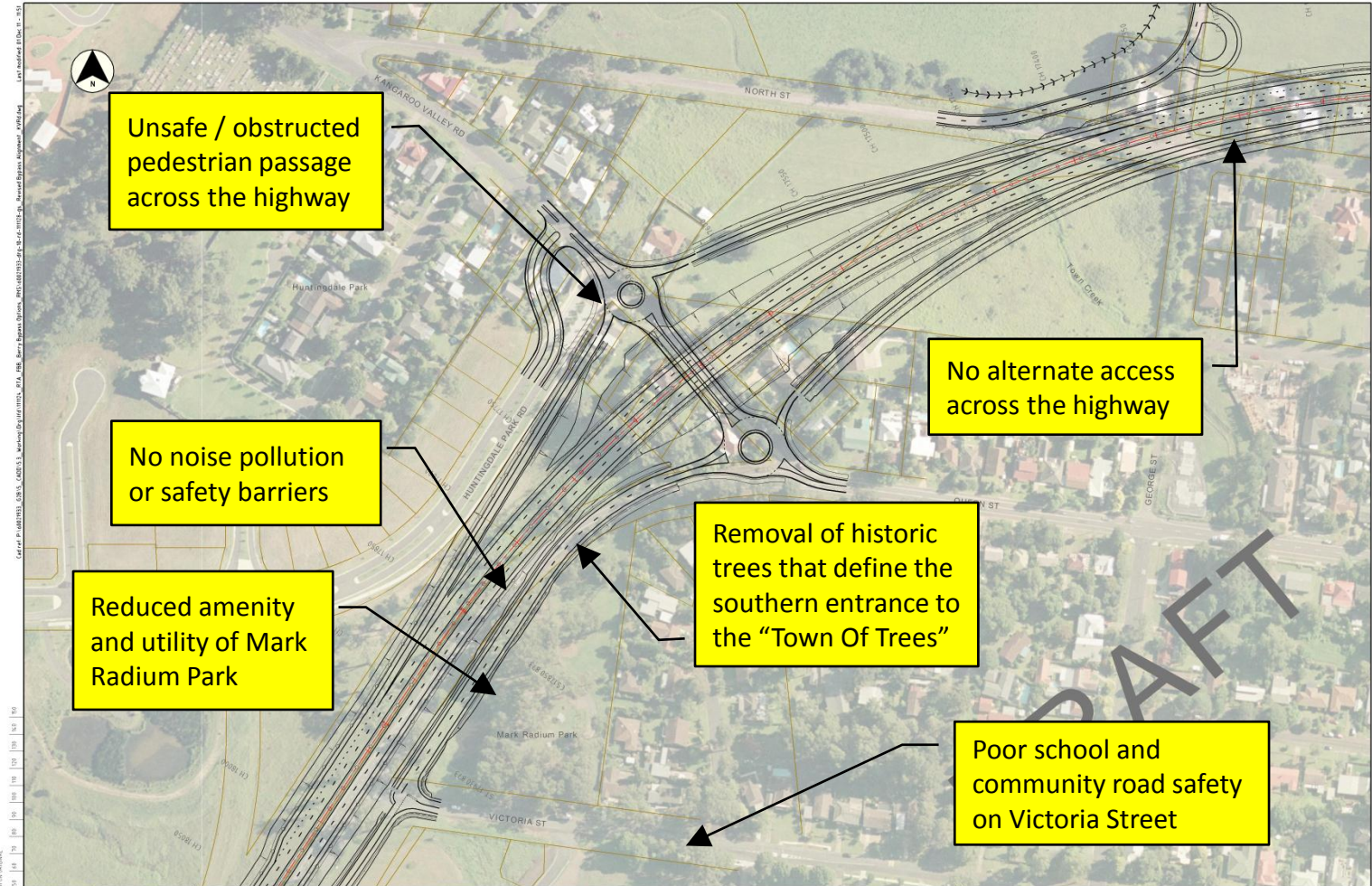
17-Apr-12



The Concerned

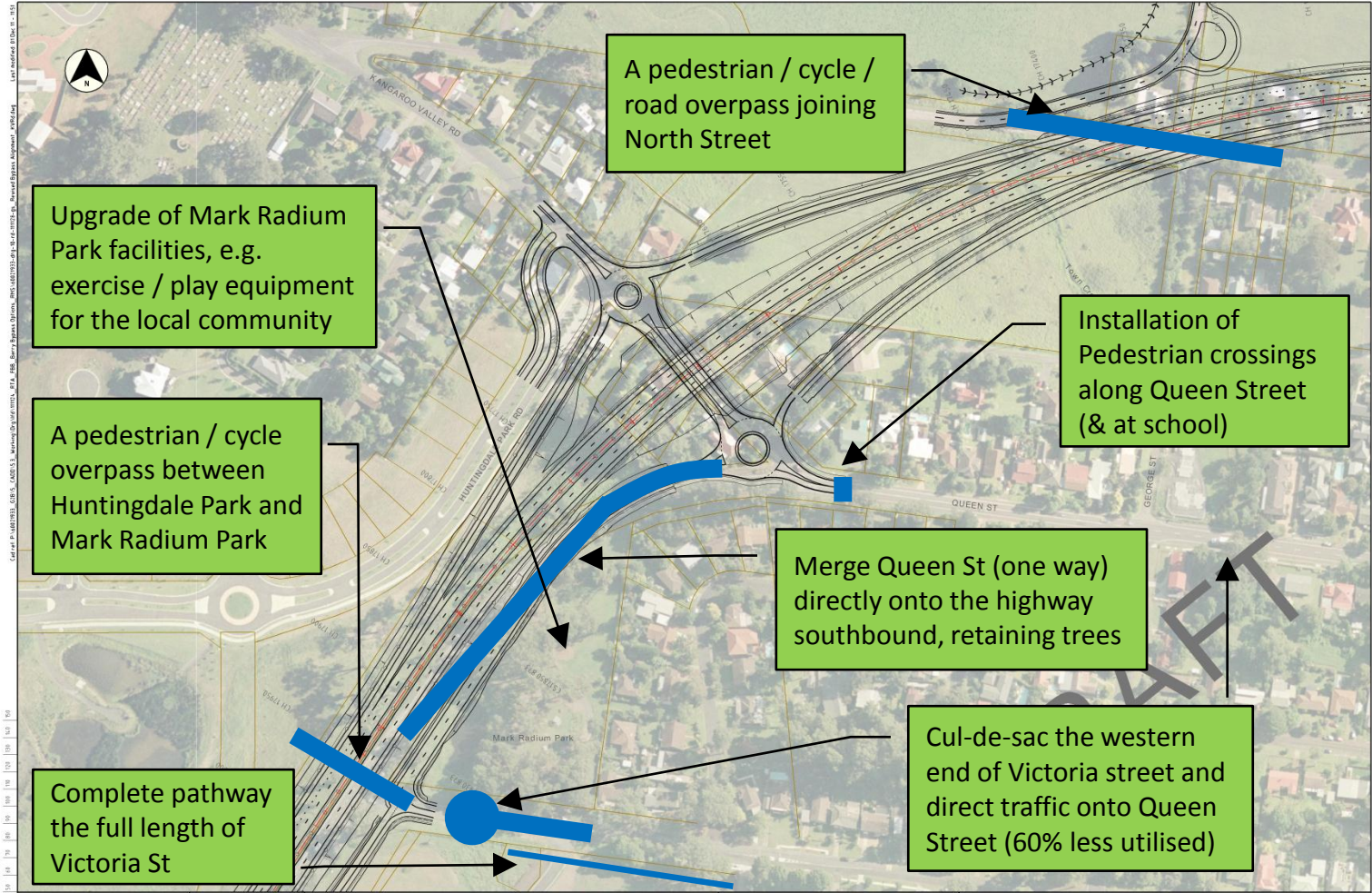
- Berry Public School P&C
- The Arbour
- The Grange
- BUPA
- Other community members

Key Problems Raised



100 110 120 130 140 150 160 170 180 190 200 210 220 230 240 250 260 270 280 290 300 310 320 330 340 350 360 370 380 390 400 410 420 430 440 450 460 470 480 490 500 510 520 530 540 550 560 570 580 590 600 610 620 630 640 650 660 670 680 690 700 710 720 730 740 750 760 770 780 790 800 810 820 830 840 850 860 870 880 890 900 910 920 930 940 950 960 970 980 990 1000	<p>AECOM Australia Pty Ltd. A.B.N. 29 893 844 925</p>	<p>DESIGNER: AECOM</p> <p>STATUS:</p>	<p>FOXGROUND & BERRY BYPASS CONCEPT DESIGN</p> <p>BERRY BYPASS OPTIONS REVISED BYPASS ALIGNMENT GENERAL ARRANGEMENT - KANGAROO VALLEY RD INTERCHANGE</p>	<p>INFORMATION DOCUMENT</p> <p>PROJECT NO.: 60021933-DRG-10-RD-111201-GS 60021933-drg-10-rd-111201-gs_ Revised Bypass Alignment_KVRd</p>
--	---	---------------------------------------	--	---

A Simpler, Safer Solution



Support To Date

- More than 105 (out of 153) community complaints to the RMS in Dec-11 were in response to the safety and access problems identified
- At a meeting in Jan-12 between Gareth Ward, RMS, Shoalhaven City Council and The Concerned it was agreed that:
 - “The design of the bypass should support the function of the park, not vice versa. This is an opportunity to create a usable space for locals”
- The following Motion was adopted by Shoalhaven City Council in Mar-12:
 - “That in the interests of pedestrian safety and residential amenity, Shoalhaven City Council supports Berry families in the negotiations with the RMS for the closure of Victoria Street toward the Princes Highway end at such time that Berry is bypassed”

Greater Community Benefits

- Greatly improved safety for all community pedestrians using Victoria Street, Mark Radium Park and crossing the highway
- Greatly improved amenity and utility of Mark Radium Park, retaining the iconic Duck Pond; A recreation hub for the elderly, young families and the growing Huntingdale Park population
- Retention of historic trees that define the southern entrance to the “Town Of Trees”
- Ongoing maintenance of the Mark Radium Park grounds by The Arbour residents
- Travellers are encouraged towards the commercial centre of town, reinforcing the role of Queen St as the shopping and business precinct
- All “Victoria St” issues addressed, as documented in the Berry Bypass Alignment Issues Report Jan-12

Berry 1972

