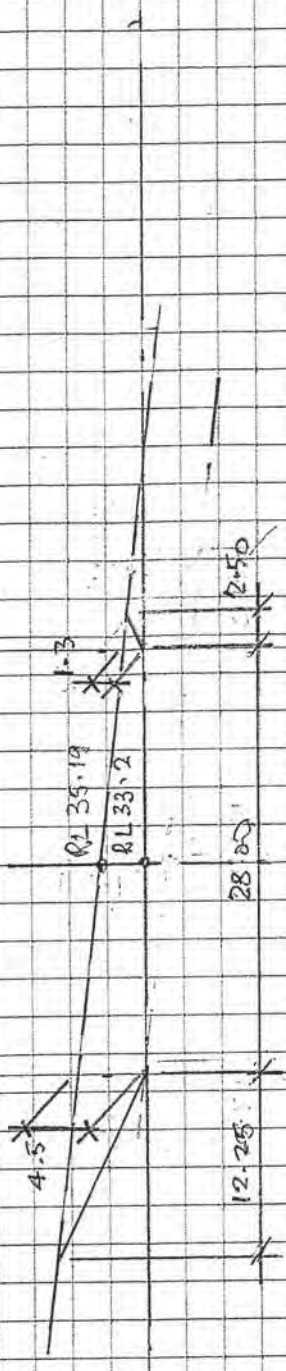
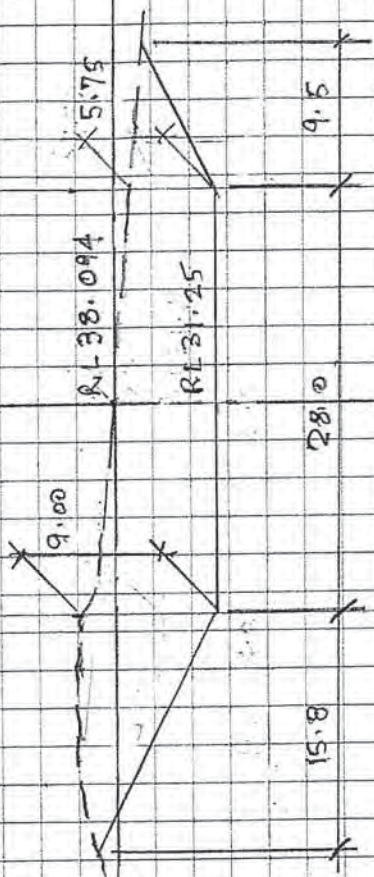


Scale 1:500

CH 14500 ~ Area = 102.67 m² (Cut)

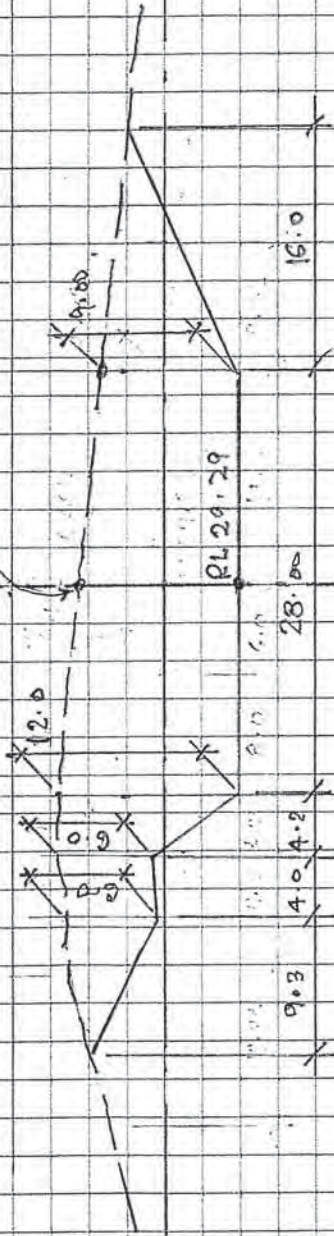


CH 14600 m Area = 84.91 m³ (CWT)



CH 14700 ~ Area = 298.02 m² (Cut)

RL 39.547



RL 29.79

28.00

4.0 4.2

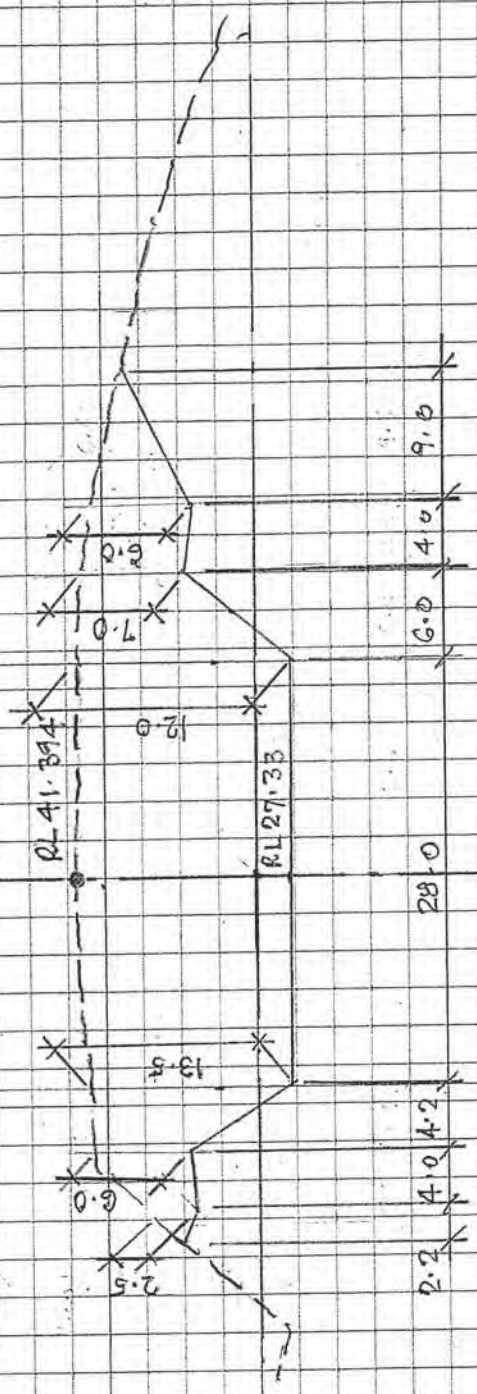
9.3

9.0

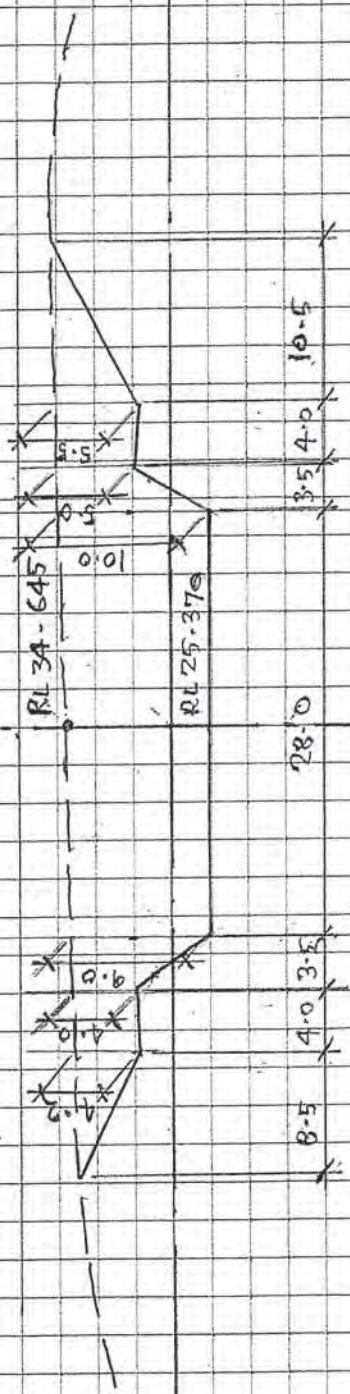
2.0

16.0

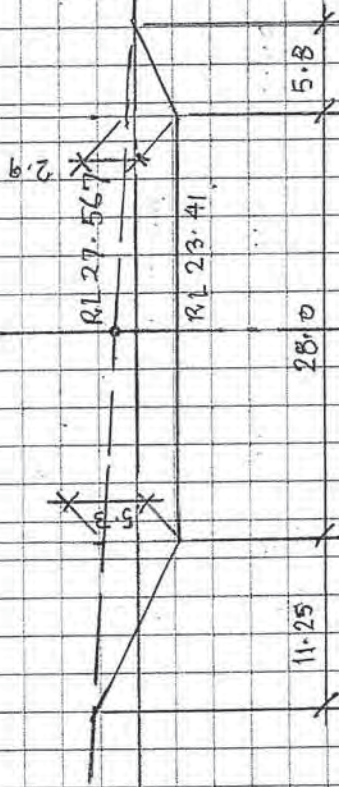
CH 4800 ~ Area = 454.8 m^2 (Cm)



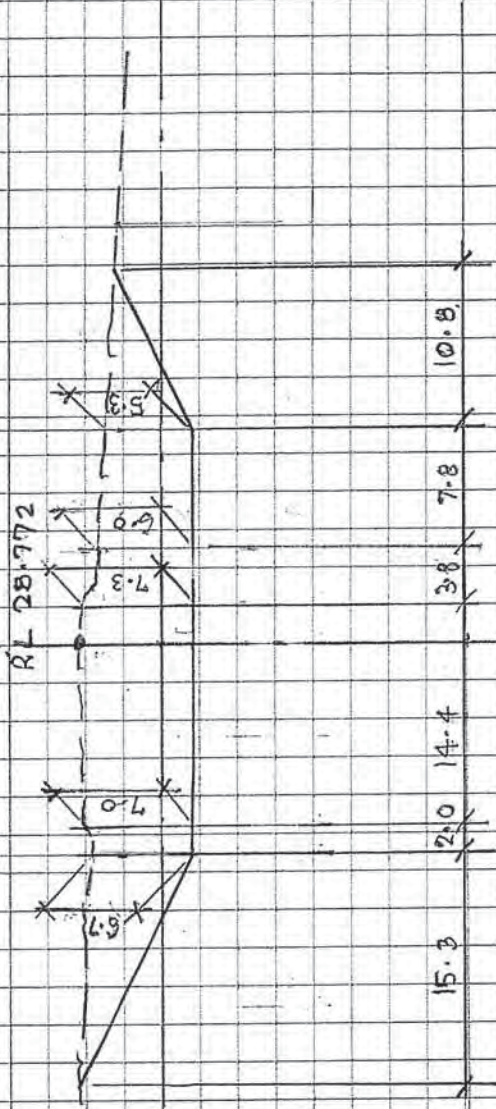
$CH\ 14980 \sim Area = 541.200\ m^2\ (Cut)$



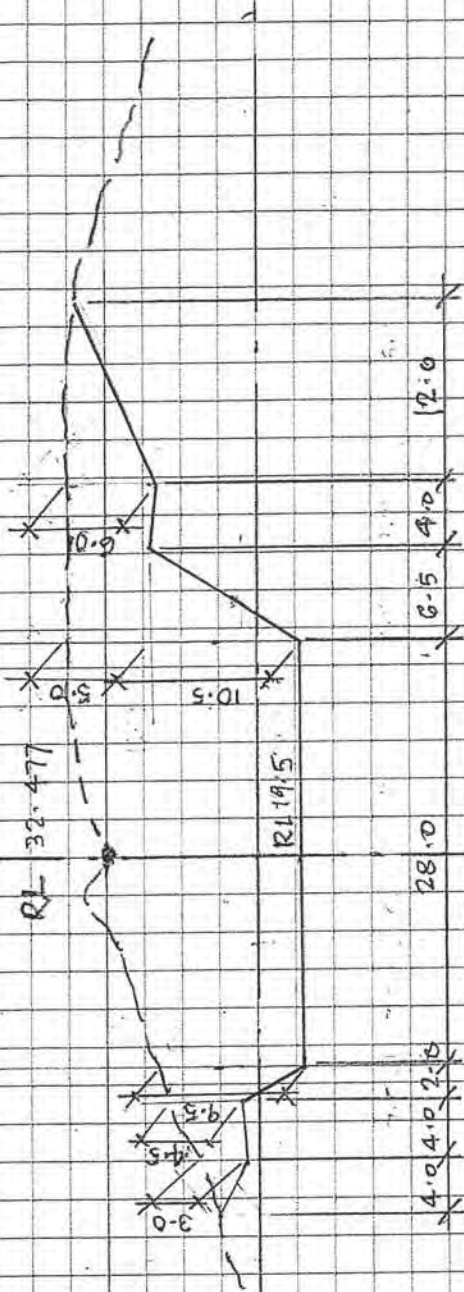
CH 15000 ~ Area = 398.73 m² (Cut)



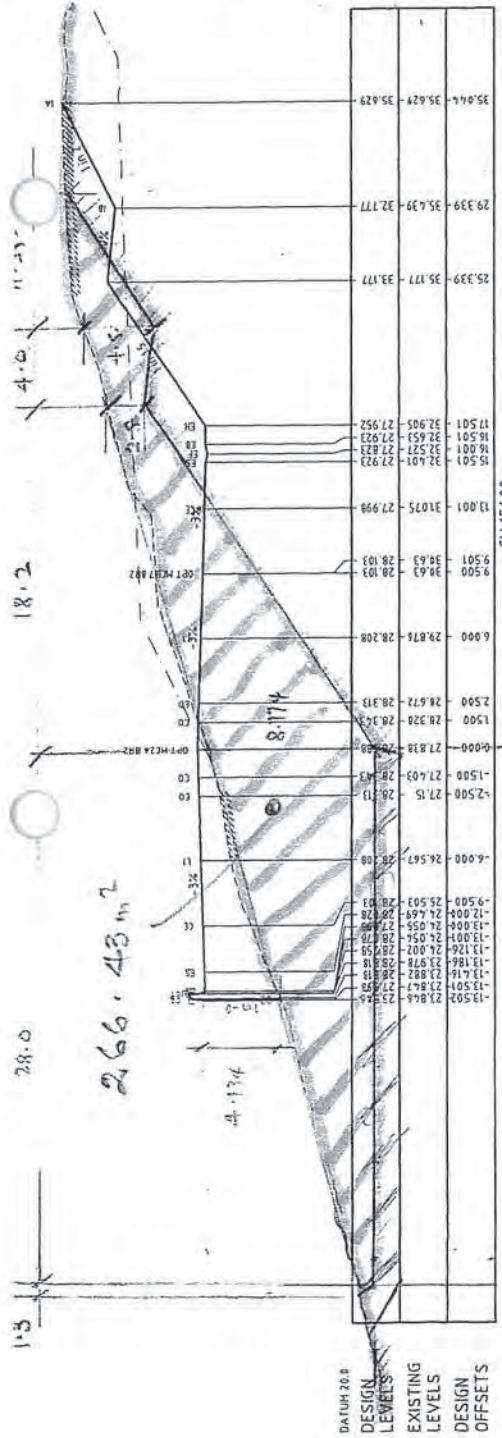
CH 15 100 ~ Area = 153.025 m² (Cut)



RL 15200 - Area = 265.88 (cut)



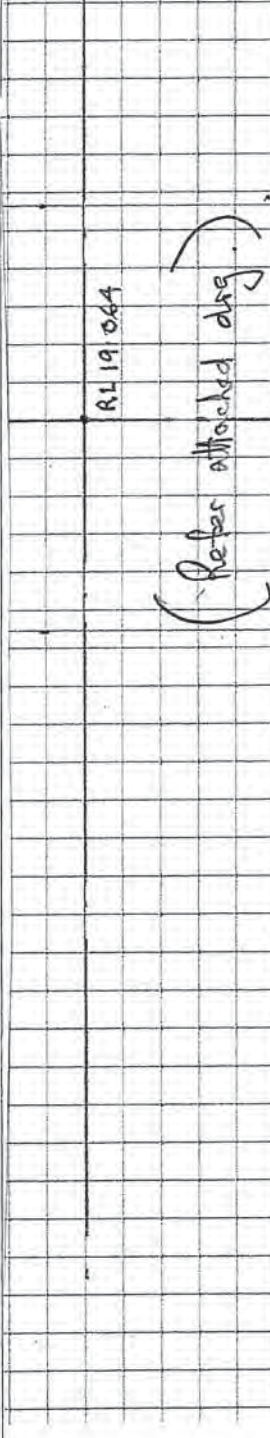
LH 15300 ~ Area = 483.625 m² (cut)



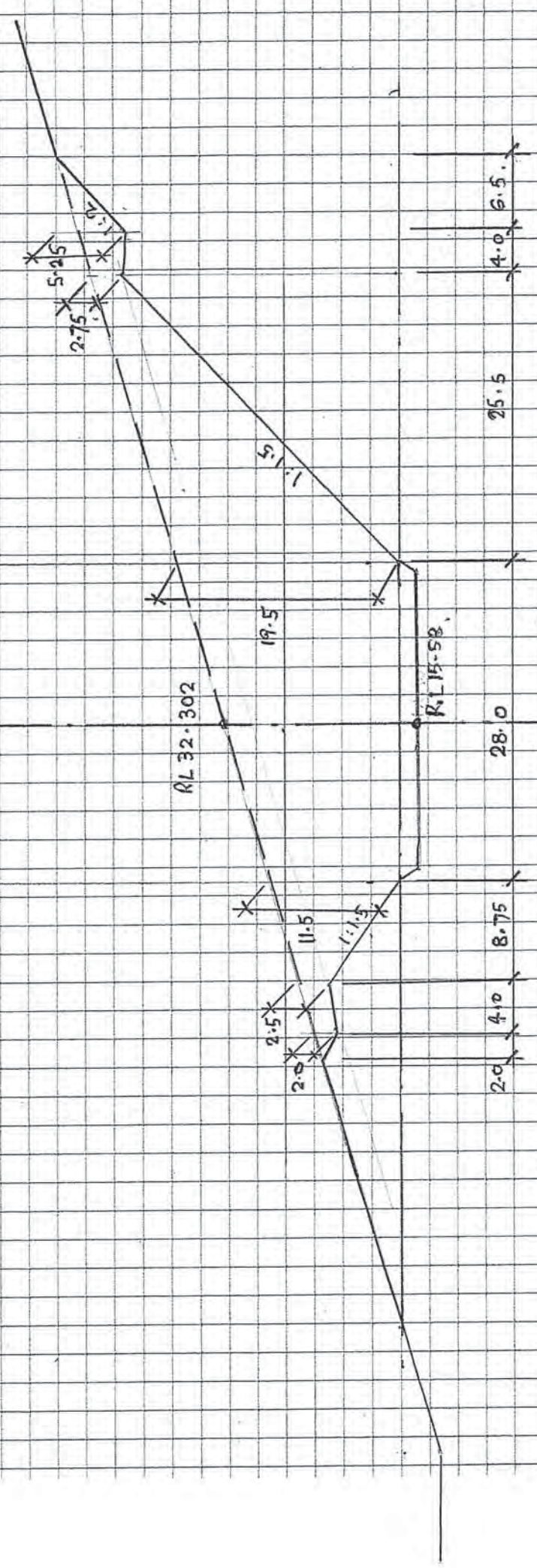
DATE: 19.06.2010

DESIGN LEVELS	EXISTING LEVELS	DESIGN OFFSETS
23.845	23.845	0.000
23.822	23.822	0.000
23.802	23.802	0.000
23.782	23.782	0.000
23.778	23.778	0.000
23.755	23.755	0.000
23.745	23.745	0.000
23.726	23.726	0.000
23.707	23.707	0.000
23.685	23.685	0.000
23.655	23.655	0.000
23.628	23.628	0.000
23.604	23.604	0.000
23.584	23.584	0.000
23.567	23.567	0.000
26.567	26.567	0.000
27.15	27.15	0.000
27.403	27.403	0.000
27.838	27.838	0.000
28.326	28.326	0.000
28.672	28.672	0.000
28.918	28.918	0.000
29.000	29.000	0.000
29.874	29.874	0.000
28.208	28.208	0.000
28.103	28.103	0.000
28.63	28.63	0.000
31.075	31.075	0.000
27.998	27.998	0.000
32.401	32.401	0.000
27.923	27.923	0.000
32.527	32.527	0.000
27.923	27.923	0.000
32.653	32.653	0.000
27.923	27.923	0.000
32.905	32.905	0.000
27.952	27.952	0.000
35.177	35.177	0.000
35.439	35.439	0.000
35.629	35.629	0.000

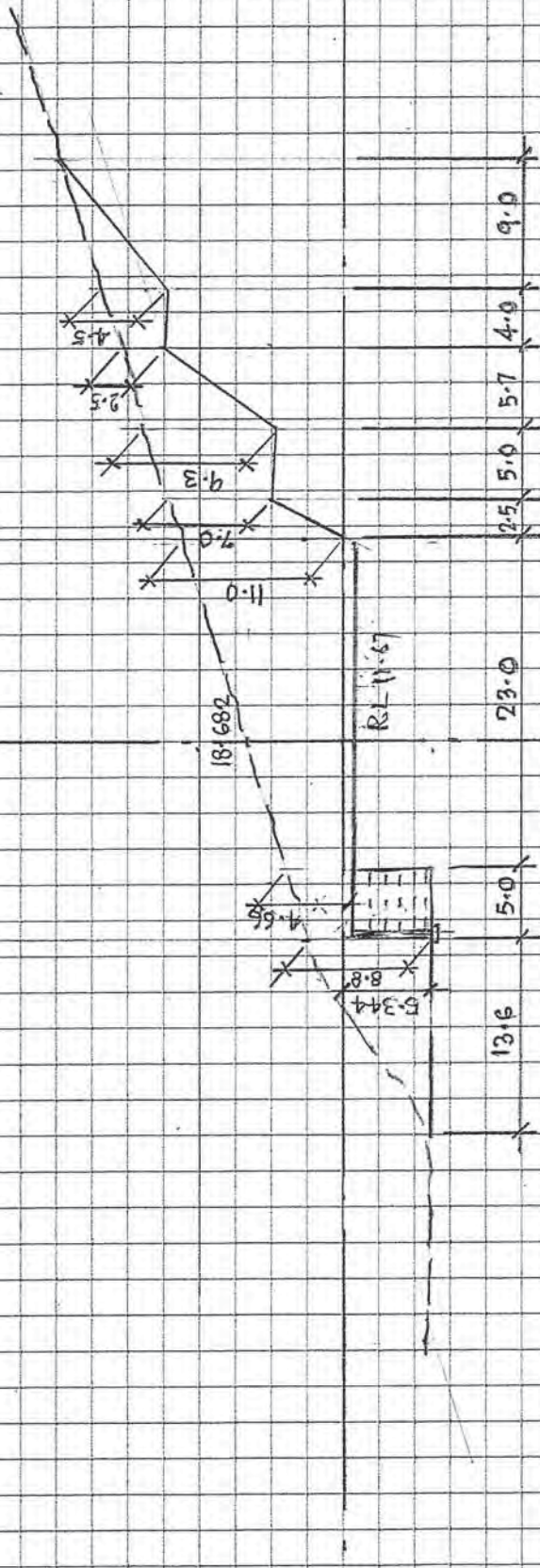
19.064



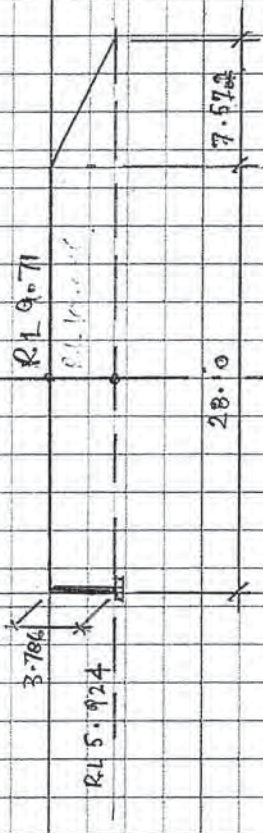
CH 154.00 ~ Area = 314.43 m² (cut)



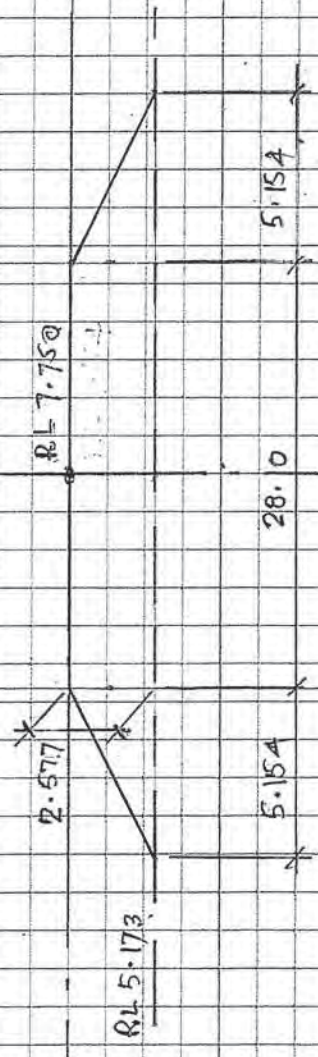
CH 15500 ~ Area = 858.00 m². (cut)



$CH\ 157\ op \sim Area = 4115.00\ m^2 \cdot (cut)$

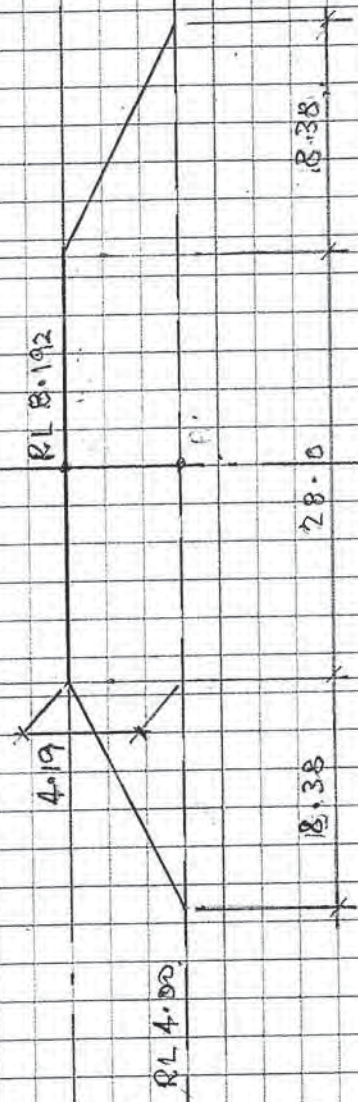


CH. 15200 ~ Area $\approx 51,008 \text{ m}^2$ (F.II)

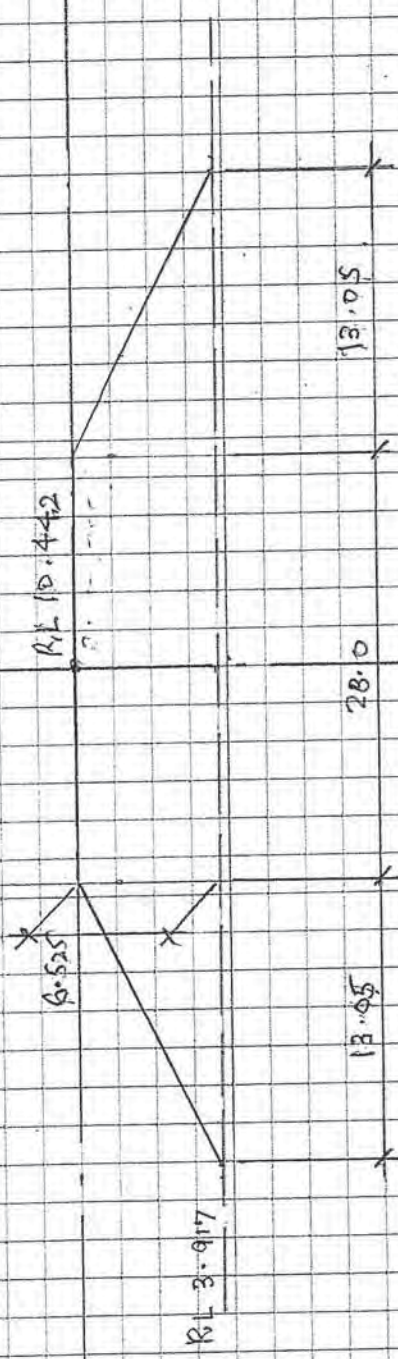


CH 15000 - Area = 85.44 m² (Fill)

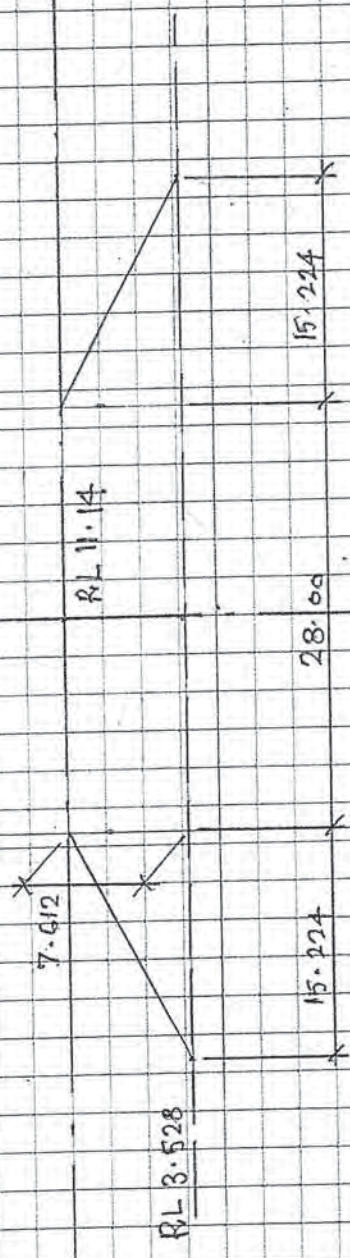
Sac Point



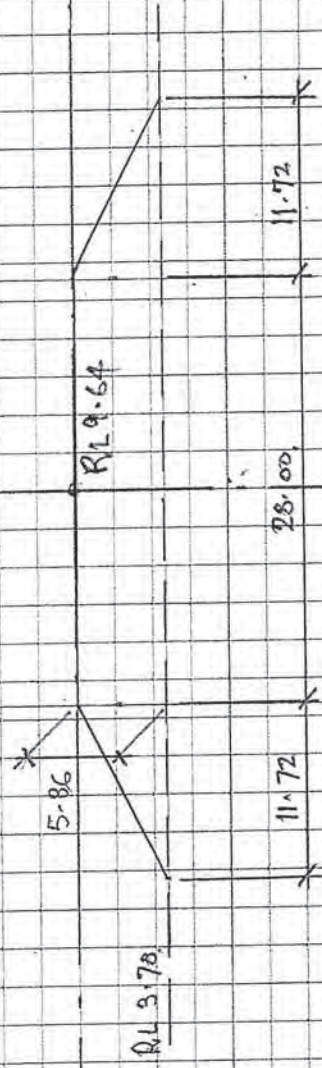
CH 16000 ~ Area = 152.43 m² (Fill)



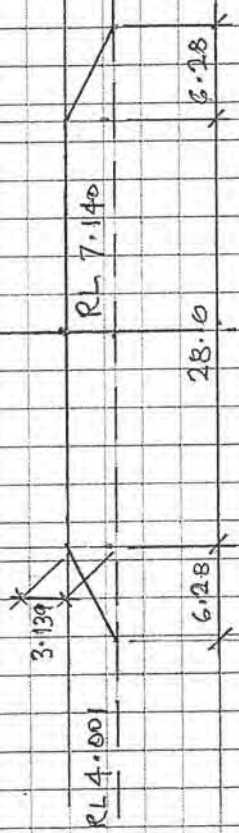
Net Area = 267.85 m² (Fill)
 Net Area = 160.92 m² (Fill)



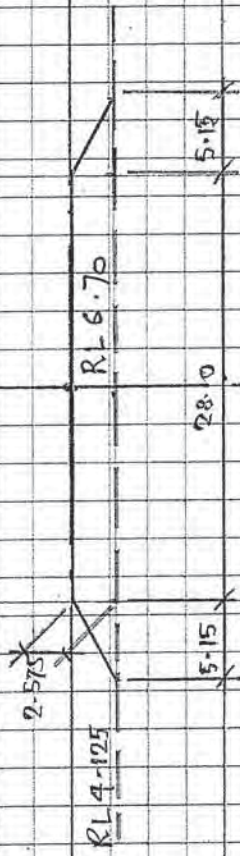
Abt  CH 16440 ~ Area = 329.02 m² (Fill)



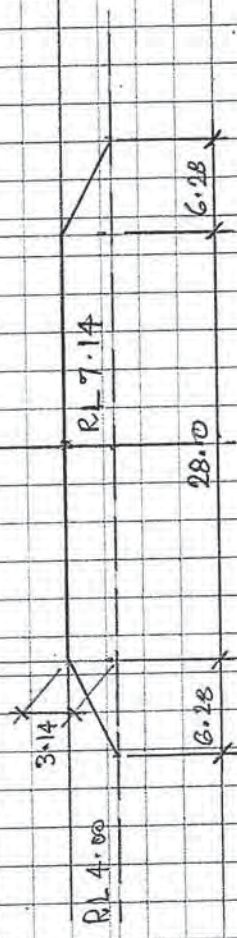
CH 16500 ~ Area = 232.76 m² (Fill)



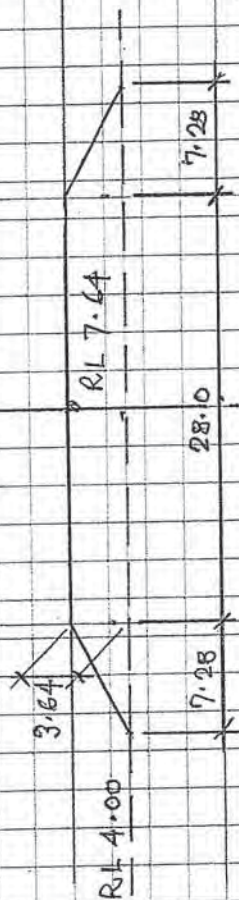
CH 16600 - Area = 107.6 m² (Fill)



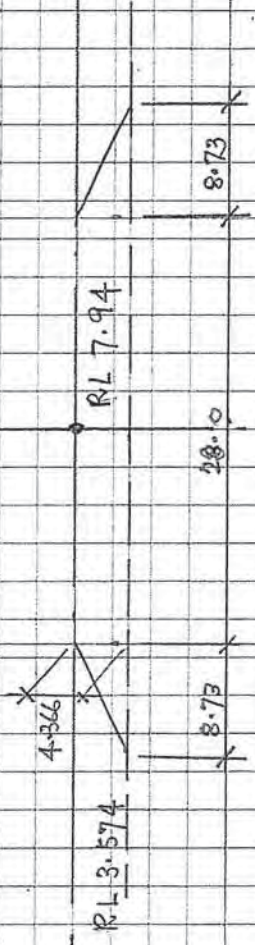
Sag Point = 0416700 ~ Area = 85.361 m² (Fill)



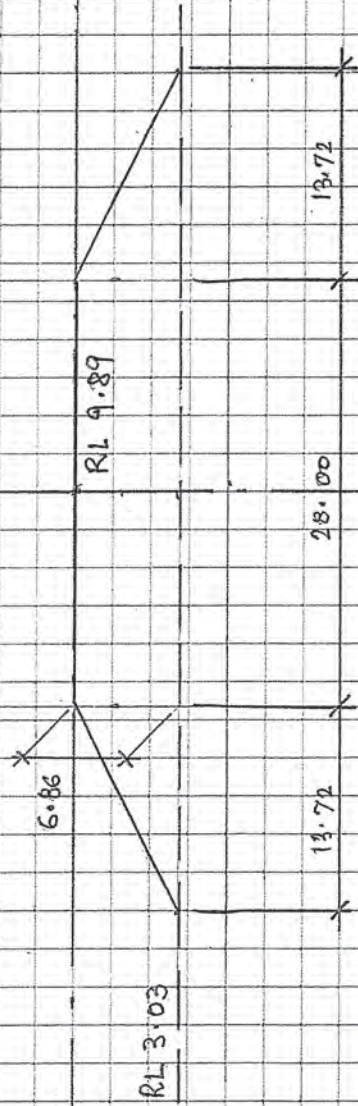
$$CA\ 16800 \sim A_{\text{area}} = 107.63\ m^2\ (Fill)$$



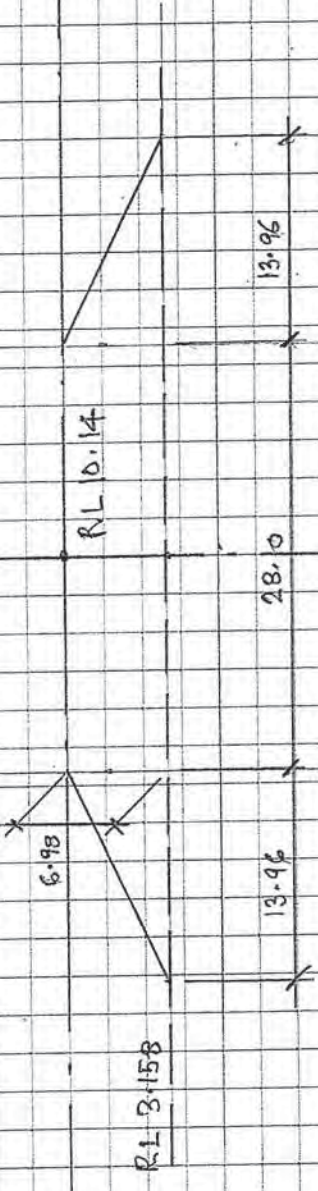
CH 16900 ~ Area = 128.92 m² (Fill)



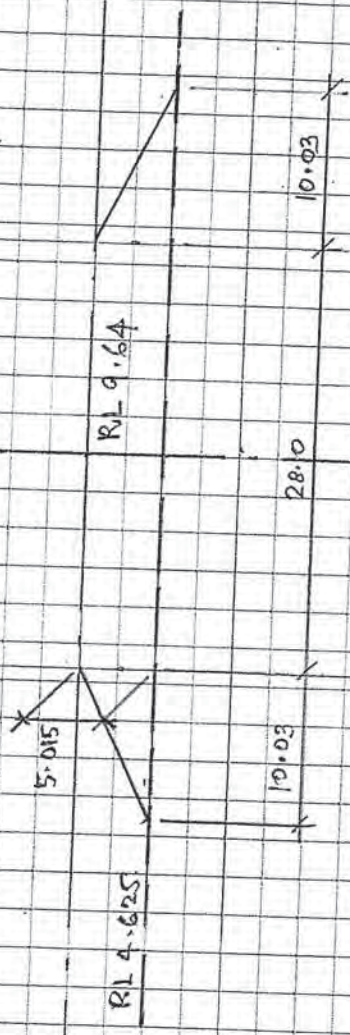
Ast. \odot CH 16 960 ~ Area. = 120.37 m² (Fill).



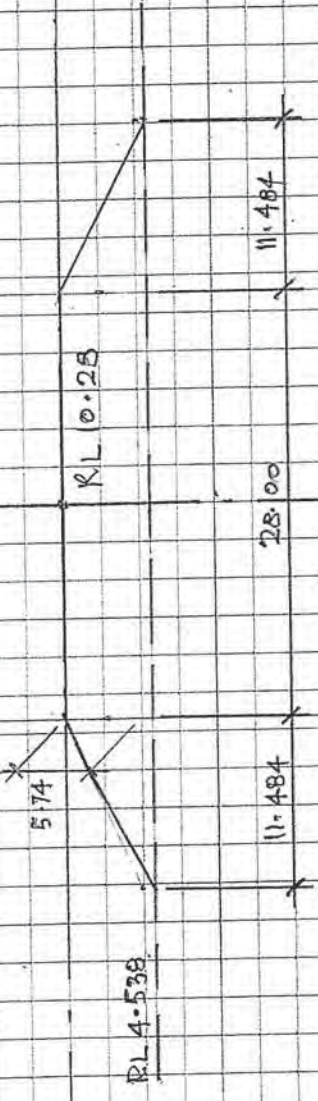
Abt. \odot CA 17350 ~ Area. = $286.20\ m^2$ (Fill)



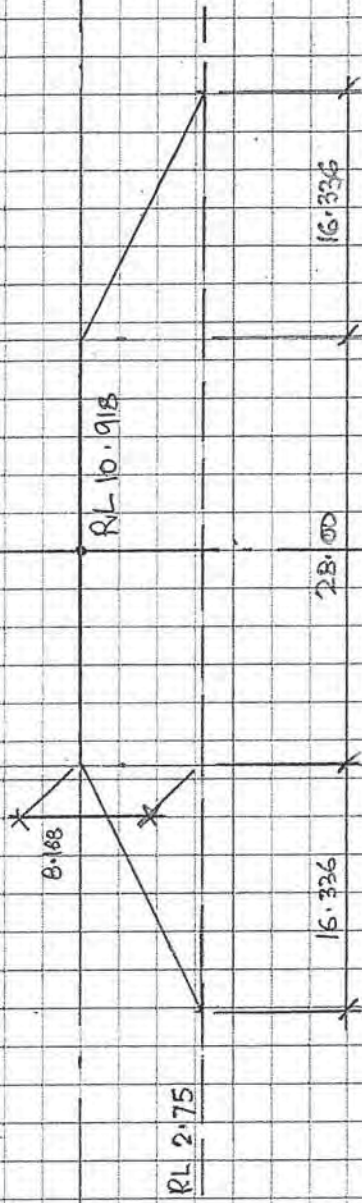
$CA17400 \sim Area = 292.91\ m^2\ (Fill)$



QA 17500 ~ Area = 190.72 m^2 (F(1))



CW 17600 ~ Area = 226.64 m² (FILL)



CA 17700 ~ Area = $362.14\ m^2$ (Fill)