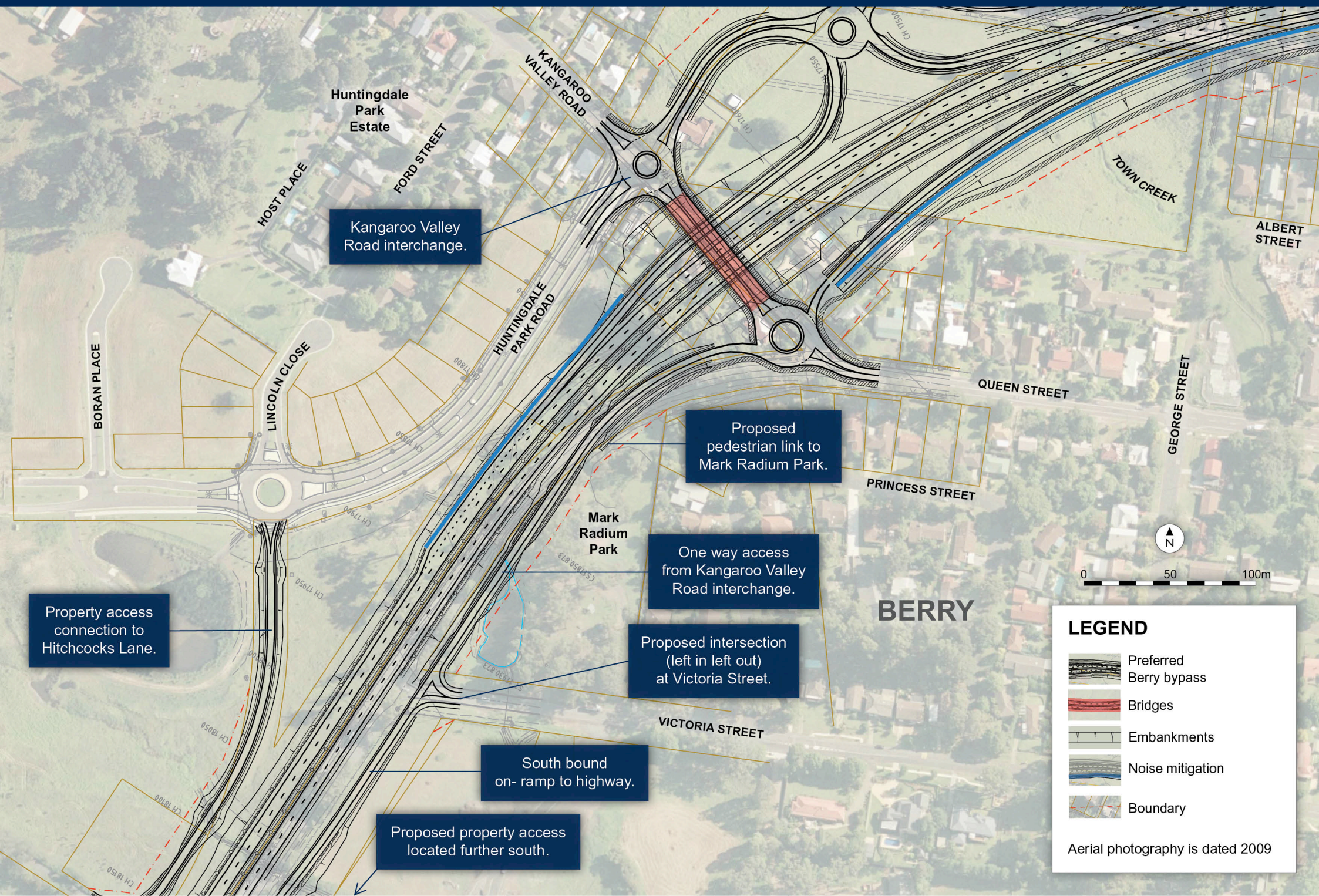


Option 3 Victoria Street open with one-way access from Kangaroo Valley Road interchange



Kangaroo Valley Road interchange.

Proposed pedestrian link to Mark Radium Park.

One way access from Kangaroo Valley Road interchange.

Proposed intersection (left in left out) at Victoria Street.



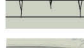


South bound on-ramp to highway.

Proposed property access located further south.

Property access connection to Hitchcocks Lane.



LEGEND

-  Preferred Berry bypass
-  Bridges
-  Embankments
-  Noise mitigation
-  Boundary

Aerial photography is dated 2009