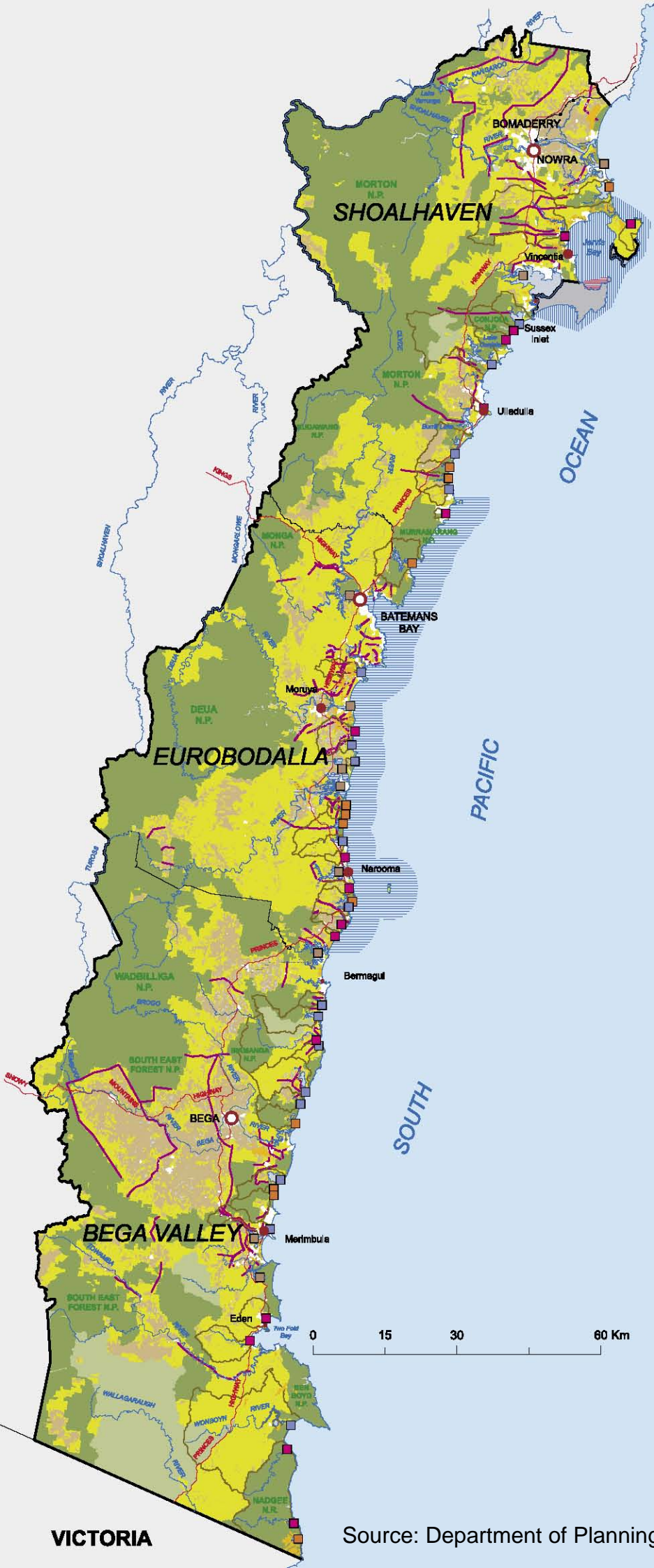


MAP 2 BIODIVERSITY AND COASTAL ASSETS



Map Legend

- Major Regional Centre
 - Major Town
 - Town
 - Rail Network and Station
 - Highway
 - River and Creek
 - Local Government Area
 - South Coast Regional Strategy Boundary
 - Existing Urban Area
 - Commonwealth Territory
 - Water Body
 - Ocean
 - National Park Estate
 - State Forest
 - Biodiversity Assets Outside Conservation Reserves
 - EEC or other vegetation of high conservation value
 - Old Growth Forest
 - Threatened flora habitat *
 - Threatened fauna habitat *
 - Extant vegetation of Landscape >70% cleared
 - Indicative Habitat Corridor
 - Rural Land and Environmental Asset
- Healthy Rivers Commission (HRC) Classification of Coastal Lakes**
- Comprehensive Protection
 - Significant Protection
- DNR Vulnerability Assessment of Coastal Lakes and Estuaries**
- Highly Vulnerable Estuary
 - Catchment boundary for HRC Coastal Lake and Vulnerable Estuary
 - Other Waterbodies with Significant Aquatic Habitat identified by DPI
- State Environmental Planning Policy 14**
- Coastal Wetland
- Marine Parks**
- Jarvis Bay Marine Park
 - Batemans Marine Park
 - Commonwealth Marine Protected Area

Note: This map can viewed at a larger size on the Department of Planning website at: www.planning.nsw.gov.au/southcoast