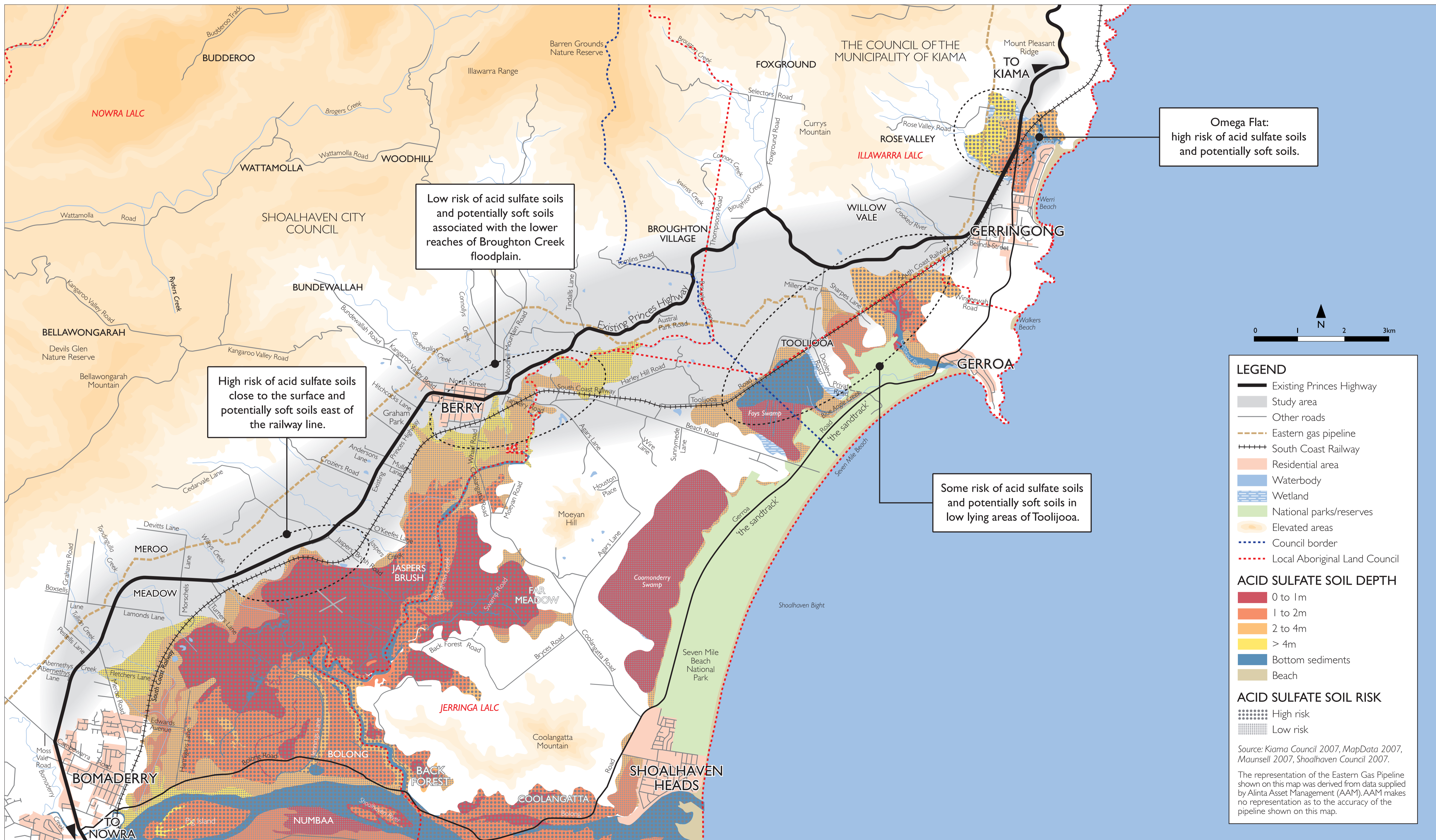


Ground conditions

Princes Highway upgrade - Gerringong to Bomaderry



A New South Wales Government Initiative

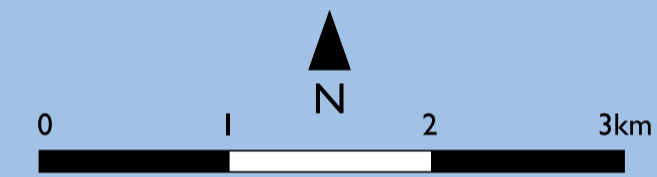


Low risk of acid sulfate soils and potentially soft soils associated with the lower reaches of Broughton Creek floodplain.

High risk of acid sulfate soils close to the surface and potentially soft soils east of the railway line.

Omega Flat: high risk of acid sulfate soils and potentially soft soils.

Some risk of acid sulfate soils and potentially soft soils in low lying areas of Toolijooa.



LEGEND

- Existing Princes Highway
- Study area
- Other roads
- Eastern gas pipeline
- South Coast Railway
- Residential area
- Waterbody
- Wetland
- National parks/reserves
- Elevated areas
- Council border
- Local Aboriginal Land Council

ACID SULFATE SOIL DEPTH

- 0 to 1m
- 1 to 2m
- 2 to 4m
- > 4m
- Bottom sediments
- Beach

ACID SULFATE SOIL RISK

- High risk
- Low risk

Source: Kiama Council 2007, MapData 2007, Maunsell 2007, Shoalhaven Council 2007.

The representation of the Eastern Gas Pipeline shown on this map was derived from data supplied by Alinta Asset Management (AAM). AAM makes no representation as to the accuracy of the pipeline shown on this map.