

JUNE 2015

## Upcoming traffic changes – Princes Highway, Gerringong from early June to late July 2015, weather permitting.

The NSW Government is funding the \$329 million Princes Highway upgrade at Gerringong to improve road safety and traffic efficiency. Completion is expected mid 2015.

### Southbound motorists will be able to:

- Travel on the two new southbound lanes on the Princes Highway between just north of the Rose Valley Road overbridge to the new Belinda Street interchange.
- Use the new southbound off-load ramp and on-load ramp at Belinda Street to enter and exit Gerringong.
- Access the highway by using the new on-load ramp that connects Fern Street to the highway for those travelling from Rose Valley Road to head south.

### Northbound motorists will be able to:

- Travel on the two new northbound lanes on the Princes Highway between the Belinda Street interchange and Mount Pleasant.
- Travel on two lanes in each direction between just north of Toolijooa Road to south of Willowvale Road.
- Access Belinda Street and Willowvale Road via a temporary intersection just north of the Belinda Street interchange.

**Once work to build the remaining northbound lanes is complete, motorists will be able to travel on all four lanes on the Princes Highway between Mount Pleasant and Toolijooa Road. This is expected in late July 2015, weather permitting.**

To prepare for these changes some night work may be carried out between Sunday 31 May and Thursday 4 June 2015 from 6pm to 7am, weather permitting. There will be some noise associated with this work, but every effort will be made to minimise the impact on residents and businesses.

Work will be carried out to complete landscaping, installing roadside signs and guardrail until late August 2015, weather permitting. Work to apply the final road surface will be carried out later in the year when weather conditions are warmer to ensure the quality of the surface is not compromised.

The southbound off-load ramp at Toolijooa Road will be built as part of the Foxground and Berry bypass. This will allow work to continue to build the Toolijooa Road interchange.

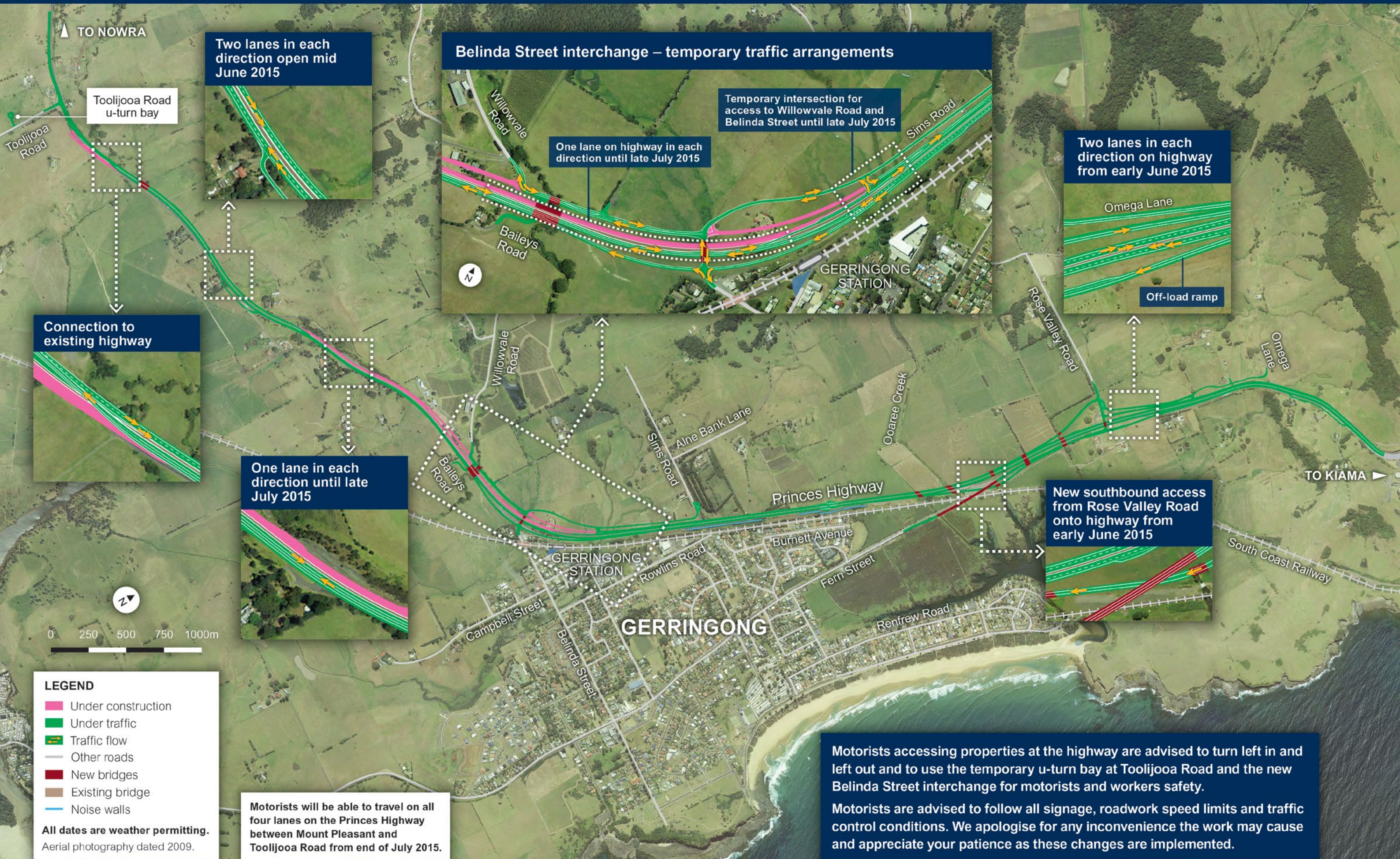
For further enquiries: Community Relations Team

[www.rms.nsw.gov.au/gu](http://www.rms.nsw.gov.au/gu) | 1800 506 976 (toll free)

For information on scheduled road work, visit [www.livetraffic.com](http://www.livetraffic.com)



# Gerringong upgrade traffic changes June to July 2015






Up to  
**20%** **travel time**  
**saving**

  
Reduce **flood**  
**impacts**

 **reduction in**  
**crashes**

  
**Planning for**  
**the future**

**Improve**   
the efficient  
movement of **freight**

 Find us on facebook.  
[facebook.com/  
PrincesHighwayUpgrade](https://facebook.com/PrincesHighwayUpgrade)

**For more information:**

**Phone:** 1800 506 976 (toll free)

**Email:** [gerringongupgrade@fultonhogan.com.au](mailto:gerringongupgrade@fultonhogan.com.au)

**Web:** [www.rms.nsw.gov.au/gu](http://www.rms.nsw.gov.au/gu)

**Post:** Gerringong upgrade, PO Box 364  
Gerringong NSW 2534

**Community display centre:** Access via Sims Road,  
Gerringong. Open Mondays to Fridays 9am–5pm

**Project office:** Shop 3/113 Queen Street, Berry  
Open Fridays 10am–5pm

**Gerringong newsagency display:**  
131 Fern Street, Gerringong NSW 2534