

FEBRUARY 2015

Temporary closure of Fern Street to connect to the new Omega Bridge, Gerringong

The NSW Government is funding the \$329 million Princes Highway upgrade at Gerringong to improve road safety and traffic flow.

To connect Fern Street to the new Omega Bridge, **Fern Street will be closed between Rose Valley Road and Sandy Wha Road**, from 4am on Monday 9 February until Friday 13 February, weather permitting. Access into and out of Gerringong will be via Belinda Street during this time.

The new Omega Bridge will open to traffic on Friday 13 February 2015, weather permitting. This will remove the railway level crossing, significantly improving safety for motorists. A map over page shows the changes that will be in place once the bridge opens to traffic.

During the Fern Street closure, access for residents and emergency vehicles will be maintained between Sandy Wha Road and Boxsell Oval as required.

Access to Rose Valley Road will remain open from the Princes Highway. Motorists travelling from Rose Valley Road to Berry should access the highway via the northbound on ramp and travel north on the Princes Highway to Weir Street, Kiama to gain southbound access to the highway. This will add about eight minutes to your journey.

To minimise the length of the closure some night work may be carried out. There will be some noise associated with this work, but every effort will be made to minimise the impact on residents and businesses.

Motorists are advised to follow all temporary signage, speed limits and traffic control measures.

We apologise for any inconvenience this work may cause and appreciate the patience of residents and road users.

Up to date information, including any date changes and night work will be displayed on electronic message signs along the road.

For further information please contact the project team on 1800 506 976 (toll free) or visit the project website at www.rms.nsw.gov.au/gu.

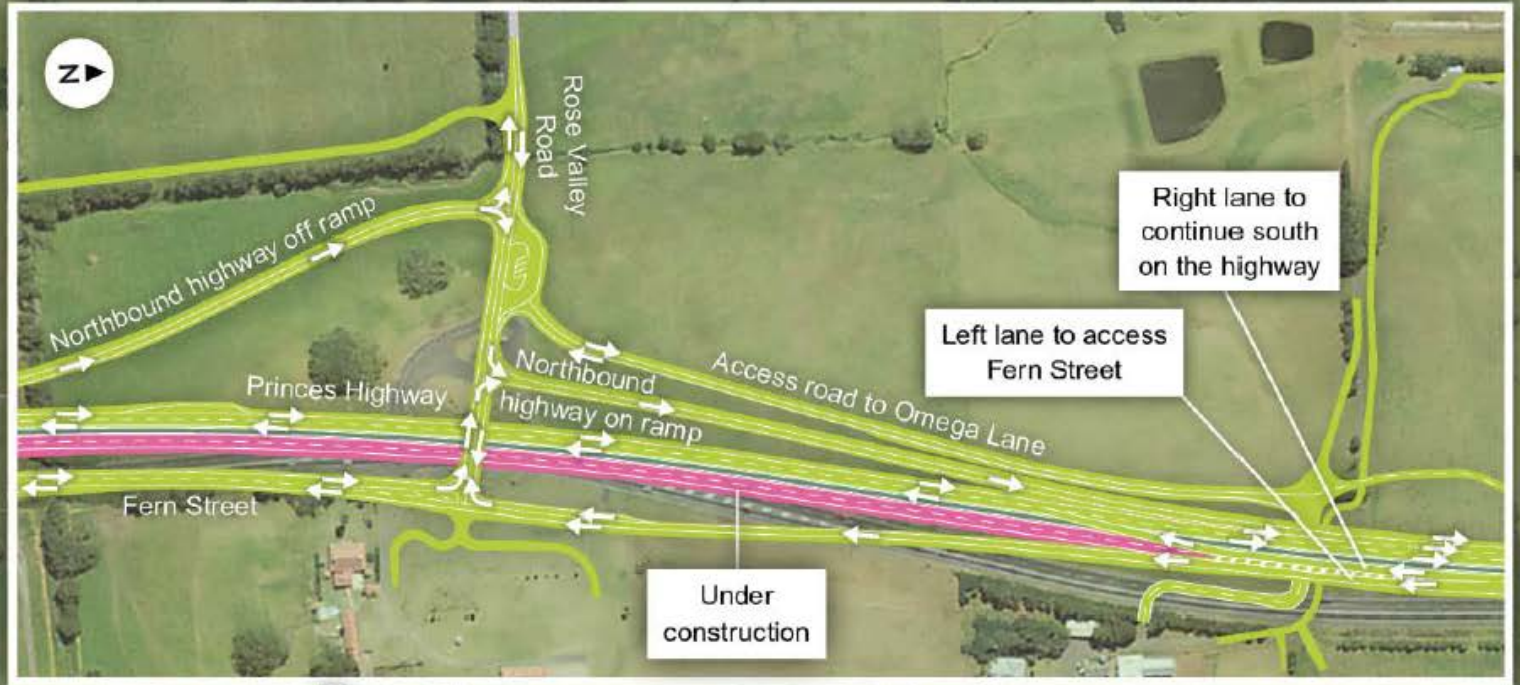
For further enquiries: Community Relations Team

T 1800 506 976 (toll free) | E gerringongupgrade@fultonhogan.com.au
I www.rms.nsw.gov.au/gu | 13 22 13



For information on scheduled road work, visit www.livetraffic.com or outside business hours call the Transport Management Centre on 132 701

Omega Bridge open to traffic



LEGEND

Under construction

Under traffic

Traffic flow

Aerial photography is dated 2009

0 100 200 300 400m

