

# To the householder



Transport  
Roads & Maritime  
Services

OCTOBER 2012

Dear resident,

## Re: Princes Highway, Gerringong upgrade – out of hours work on the Princes Highway near Sims Road, Gerringong

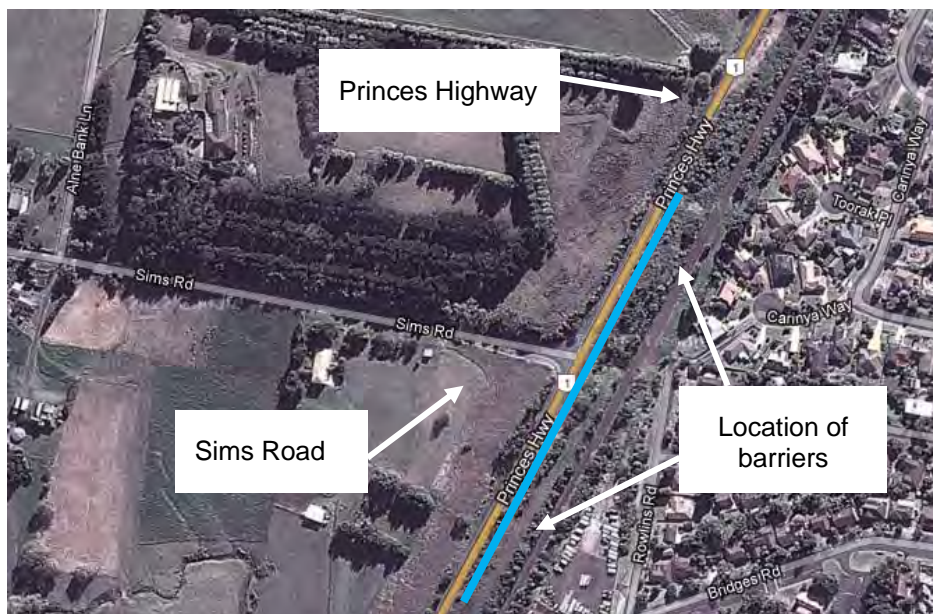
Roads and Maritime Services (RMS) is upgrading the Princes Highway between Mount Pleasant and Toolijooa Road.

As part of this upgrade, out of hours work is required to install concrete barriers along the Princes Highway near Sims Road, Gerringong. These barriers will be installed around the work site to protect motorists, pedestrians and workers. The activity may involve light vehicles, a semi-trailer and a crane.

To minimise the impact on motorists the work will take place at night from **Tuesday 6 November to Friday 9 November 2012, between 7pm and 5am**, weather permitting.

During the work temporary closures of the Princes Highway northbound lane are required. A reduced speed limit of 40 km/h, traffic management and advanced signage will be in place to help direct motorists.

**Below is a location map showing where barriers will be installed.**



Roads and Maritime Services

For more information

1800 506 976 (toll free) | PO Box 364, Gerringong NSW 2534 | [gerringongupgrade@fultonhogan.com.au](mailto:gerringongupgrade@fultonhogan.com.au) | [www.rms.nsw.gov.au/gu](http://www.rms.nsw.gov.au/gu)

### Community display centre

446 Princes Highway Gerringong NSW 2534  
Monday to Friday 9am to 5pm (excluding public holidays)

### Berry project office

Shop 3/113 Queen Street, Berry NSW 2535  
Staffed Friday 10am to 5pm (excluding public holidays)

# To the householder



Transport  
Roads & Maritime  
Services

The project team will work to ensure that any disruption is kept to a minimum while this essential activity takes place. RMS apologises for any inconvenience the work may cause.

For more information please contact the community relations team on **1800 506 976** (toll free) or email [gerringongupgrade@fultonhogan.com.au](mailto:gerringongupgrade@fultonhogan.com.au).

Yours faithfully,

A handwritten signature in black ink, consisting of a stylized 'S' followed by a horizontal line.

Steven Glover  
Project Director  
Gerringong upgrade

Roads and Maritime Services



**RMS project achievements. Have a look.**

[www.rta.nsw.gov.au/roadprojects/resources/documents/reports/achievements\\_display\\_book.pdf](http://www.rta.nsw.gov.au/roadprojects/resources/documents/reports/achievements_display_book.pdf)