

# To the householder



Transport  
Roads & Maritime  
Services

NOVEMBER 2013

Dear resident,

## **Re: Princes Highway, Gerringong upgrade – Out of hours work and traffic changes on the Princes Highway near Sims Road and Willowvale Road.**

Roads and Maritime Services is upgrading the Princes Highway between Mount Pleasant and Toolijooa Road. To progress construction of the upgrade the following out of hours work and traffic changes will occur:

### **Out of hours work on the Princes Highway near Sims Road**

Out of hours work is required on the Princes Highway near Sims Road to carry out vegetation control along the northbound side of the highway. Whipper snippers and light vehicles will be used to carry out this work. This work is expected to be carried out in two hours.

During the work partial temporary closures of the Princes Highway is required. Through access will be maintained at all times. A reduced speed limit of 40km/h, traffic management, lighting and advanced signage will be in place to help direct motorists.

### **Out of hours work and traffic changes on the Princes Highway and Willowvale Road**

Out of hours work is required on the Princes Highway and Willowvale Road to add a protected right turn bay for vehicles turning into Willowvale Road. This work involves removing the existing line marking and installing new line marking. Light vehicles and trucks will be used to carry out this work. This work is expected to be completed in one night.

During the work partial temporary closures of the Princes Highway and Willowvale Road are required. Through access will be maintained at all times. A reduced speed limit of 40km/h, traffic management, lighting and advanced signage will be in place to help direct motorists.

To minimise the impact on motorists this work will take place at night on **Monday 25 November 2013 between 6pm and 7am**, weather permitting.

Please see overleaf location maps showing where the out of hours work and traffic changes will be.

Variable message boards will be in place to assist residents and motorists with these changes. Roads and Maritime apologises for any inconvenience the work may cause. For more information please contact the community relations team on **1800 506 976** (toll free) or email [gerringongupgrade@fultonhogan.com.au](mailto:gerringongupgrade@fultonhogan.com.au).

Yours faithfully,

A handwritten signature in blue ink, appearing to read 'Adrian Rouse'.

Adrian Rouse  
RMS Senior Project Manager  
Gerringong upgrade

For more information

**1800 506 976** (toll free) | PO Box 364, Gerringong NSW 2534 | [gerringongupgrade@fultonhogan.com.au](mailto:gerringongupgrade@fultonhogan.com.au) | [www.rms.nsw.gov.au/gu](http://www.rms.nsw.gov.au/gu)

#### **Community display centre**

446 Princes Highway, Gerringong NSW 2534  
Monday to Friday 9am to 5pm (excluding public holidays)

#### **Project office**

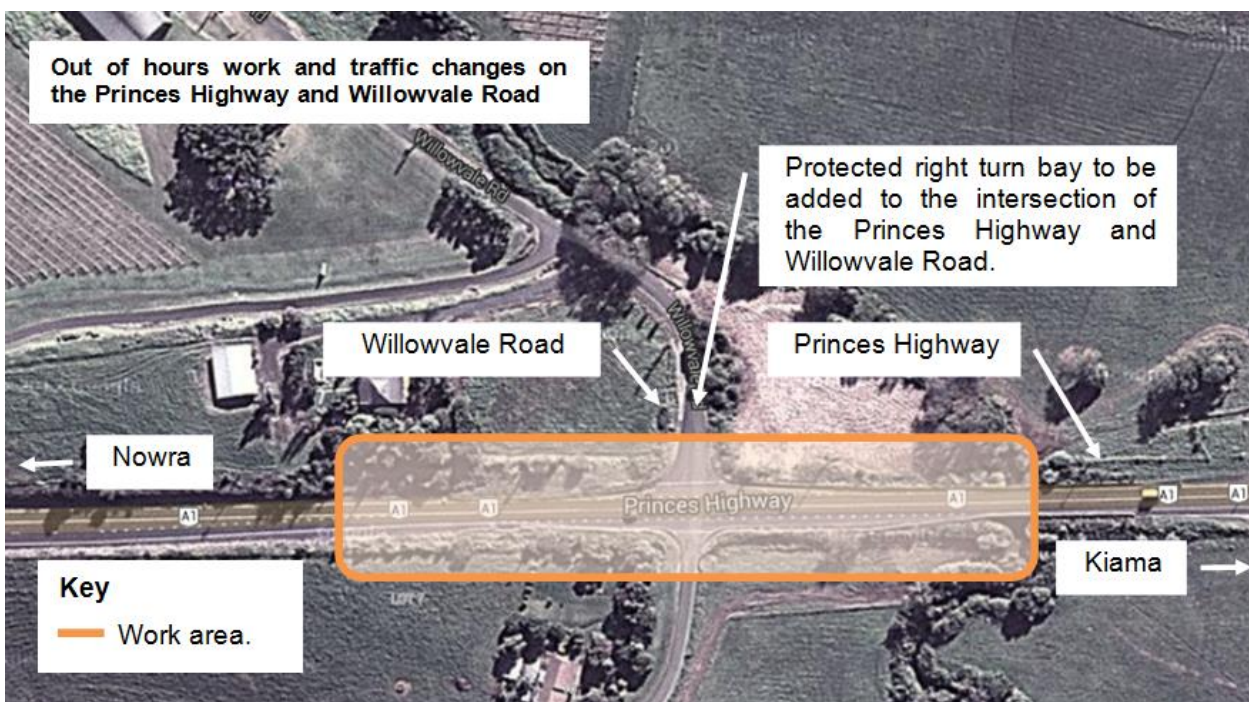
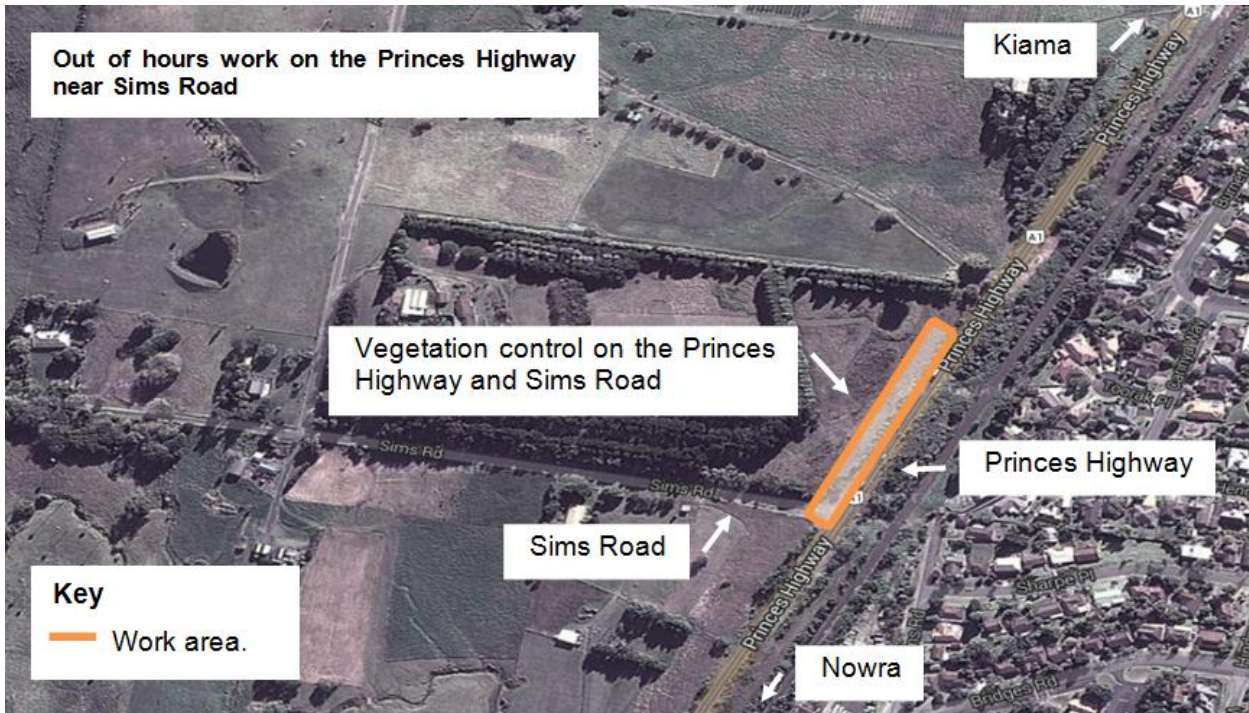
Shop 3/113 Queen Street, Berry NSW 2535  
Fridays 10am to 5pm (excluding public holidays)

# To the householder



Transport  
Roads & Maritime  
Services

## Location maps showing the out of hours work and traffic changes



Roads and Maritime Services



RMS project achievements. Have a look.

[www.rta.nsw.gov.au/roadprojects/resources/documents/reports/achievements\\_display\\_book.pdf](http://www.rta.nsw.gov.au/roadprojects/resources/documents/reports/achievements_display_book.pdf)