

# To the householder



Transport  
Roads & Maritime  
Services

AUGUST 2013

Dear resident,

## Re: Princes Highway, Gerringong upgrade – traffic changes and out of hours work near Rose Valley Road.

Roads and Maritime Services (RMS) is upgrading the Princes Highway between Mount Pleasant and Toolijooa Road. To progress construction of the upgrade the following changes will occur:

### Rose Valley Road traffic changes stage one

The u-turn bay and bus stop at Rose Valley Road will be relocated to a temporary access road south of the existing facility from **Monday 12 August 2013, weather permitting**. The operation of the u-turn bay and bus stop will continue. Please see a location map overleaf showing the traffic changes. This work will be carried out during normal working hours. Traffic management and signage will be in place to assist residents and motorists with these changes.

### Rose Valley Road traffic changes stage two

Traffic will be moved onto a temporary road east of the existing highway near Rose Valley Road from **Thursday 22 August 2013 until early 2014, weather permitting**. This includes moving the intersection of the Princes Highway and Rose Valley Road south of the existing intersection. The operation of this intersection will continue. Please see location map overleaf showing the traffic changes.

To minimise the impact on motorists, work to construct the temporary road and intersection will take place at night from **Sunday 18 August 2013 until Wednesday 21 August 2013 between 6pm and 7am, weather permitting**. Activities include line marking, safety barrier relocation, asphalt work and signage installation. These activities may involve a crane, asphalt machine, trucks and light vehicles.

During the work temporary lane closures on the Princes Highway and Rose Valley Road may be required. A reduced speed limit of 40km/h, traffic management and advanced signage will be in place to help direct motorists. Traffic management and signage will be in place to assist residents and motorists with these changes.

The project team will work to ensure that any disruption is kept to a minimum while these essential activities take place. RMS apologises for any inconvenience the work may cause. For more information please contact the community relations team on **1800 506 976** (toll free) or email [gerringongupgrade@fultonhogan.com.au](mailto:gerringongupgrade@fultonhogan.com.au).

Yours faithfully,

Adrian Rouse  
RMS Senior Project Manager  
Gerringong upgrade

Roads and Maritime Services

For more information

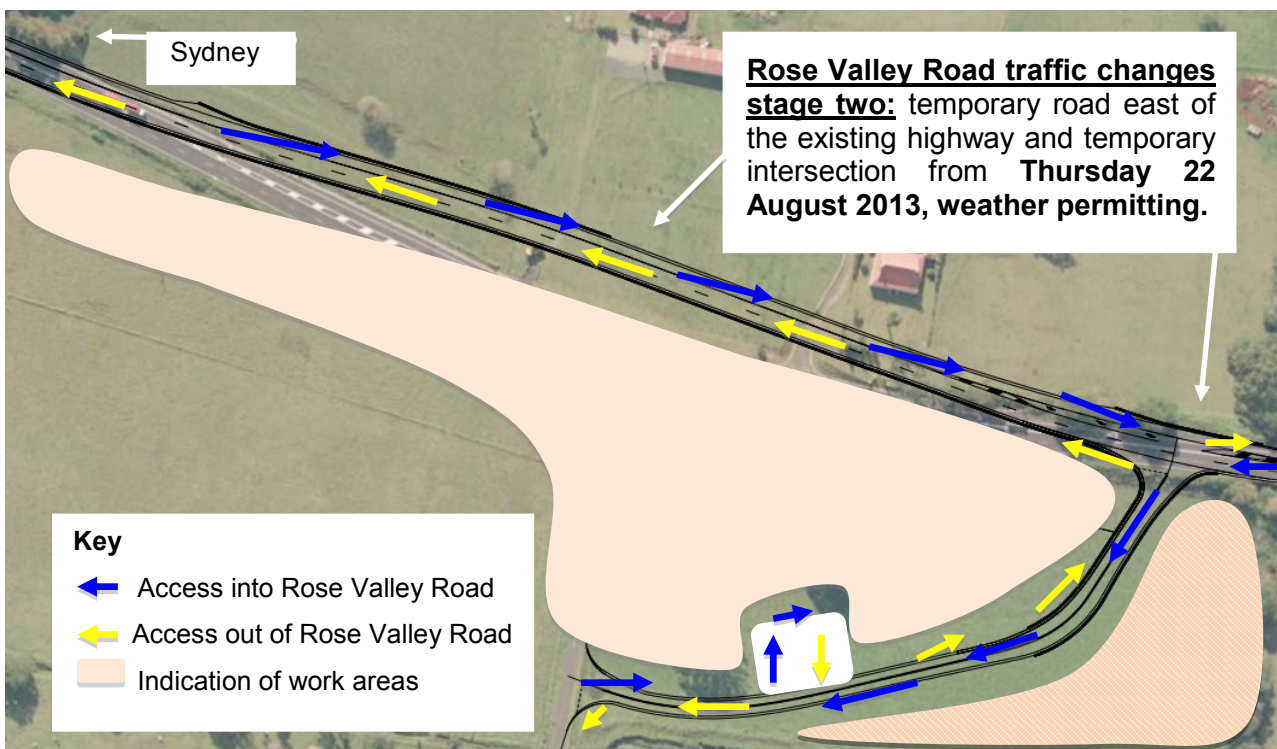
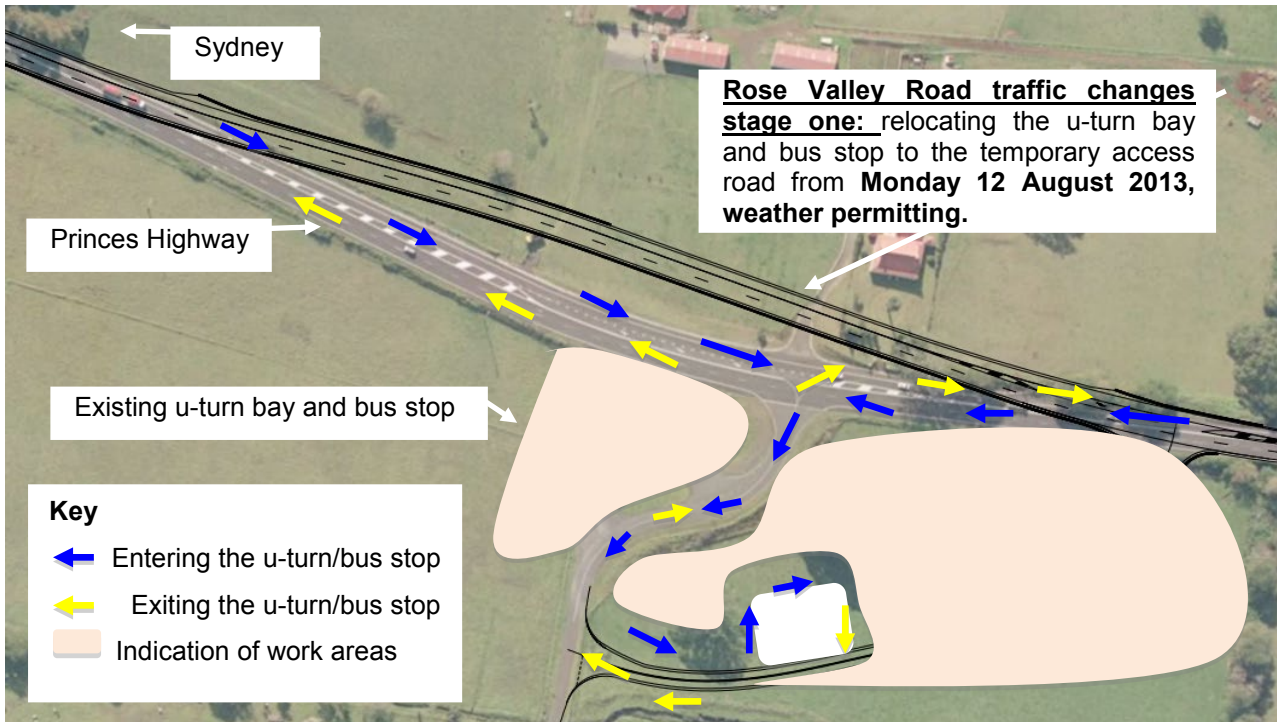
**1800 506 976** (toll free) | PO Box 364, Gerringong NSW 2534 | [gerringongupgrade@fultonhogan.com.au](mailto:gerringongupgrade@fultonhogan.com.au) | [www.rms.nsw.gov.au/gu](http://www.rms.nsw.gov.au/gu)

**Community display centre**  
446 Princes Highway, Gerringong NSW 2534  
Monday to Friday 9am to 5pm (excluding public holidays)

**Project office**  
Shop 3/113 Queen Street, Berry NSW 2535  
Fridays 10am to 5pm (excluding public holidays)

# To the householder

## Location maps showing the traffic changes for stage one and stage two



Roads and Maritime Services



RMS project achievements. Have a look.

[www.rta.nsw.gov.au/roadprojects/resources/documents/reports/achievements\\_display\\_book.pdf](http://www.rta.nsw.gov.au/roadprojects/resources/documents/reports/achievements_display_book.pdf)