

Field investigations in Blackheath, Mount Victoria and Little Hartley from 22 November

The NSW Government is carrying out essential field investigations from Blackheath to Little Hartley as part of the Great Western Highway Upgrade Program

Transport for NSW will be carrying out various investigations, including geotechnical surveys, biodiversity studies, noise monitoring, traffic studies, geospatial surveys, hydrogeology investigations, and environmental surveys on and near the Great Western Highway from November 2021 to February 2022, excluding the holiday break, to inform the design of the Highway upgrade.

Contractors for Transport for NSW will carry out this work on and near the Great Western Highway and on private properties. The map overleaf shows the area of the work, highlighted in blue.

The majority of the work will be completed between **8am to 5pm** weekdays and **8am to 1pm** Saturdays, however, there may be some night time work required between **7pm to 10pm** weeknights. We expect to carry out investigations between **Monday 22 November** and **Friday 17 December 2021** and re-commence from **Monday 10 January 2022** until **Monday 28 February 2022**, weather permitting. We will let you know in advance if we need to do any work outside these times.

How will the work affect you?

The majority of this work will have minimal impact to local residents. The geotechnical survey will involve the use of machinery which generates some noise, however, this work will be carried out during the day. Drilling works will be undertaken by a geotechnical drilling rig and digging work with a small excavator.

We will make every effort to minimise noise by turning off vehicles when not in use and staging the work.

We will continue to keep you informed as planning on the project progresses.

Traffic changes

There may be minor traffic impacts during site set up for some of the investigation work, however, the impact to motorists will be minimal.

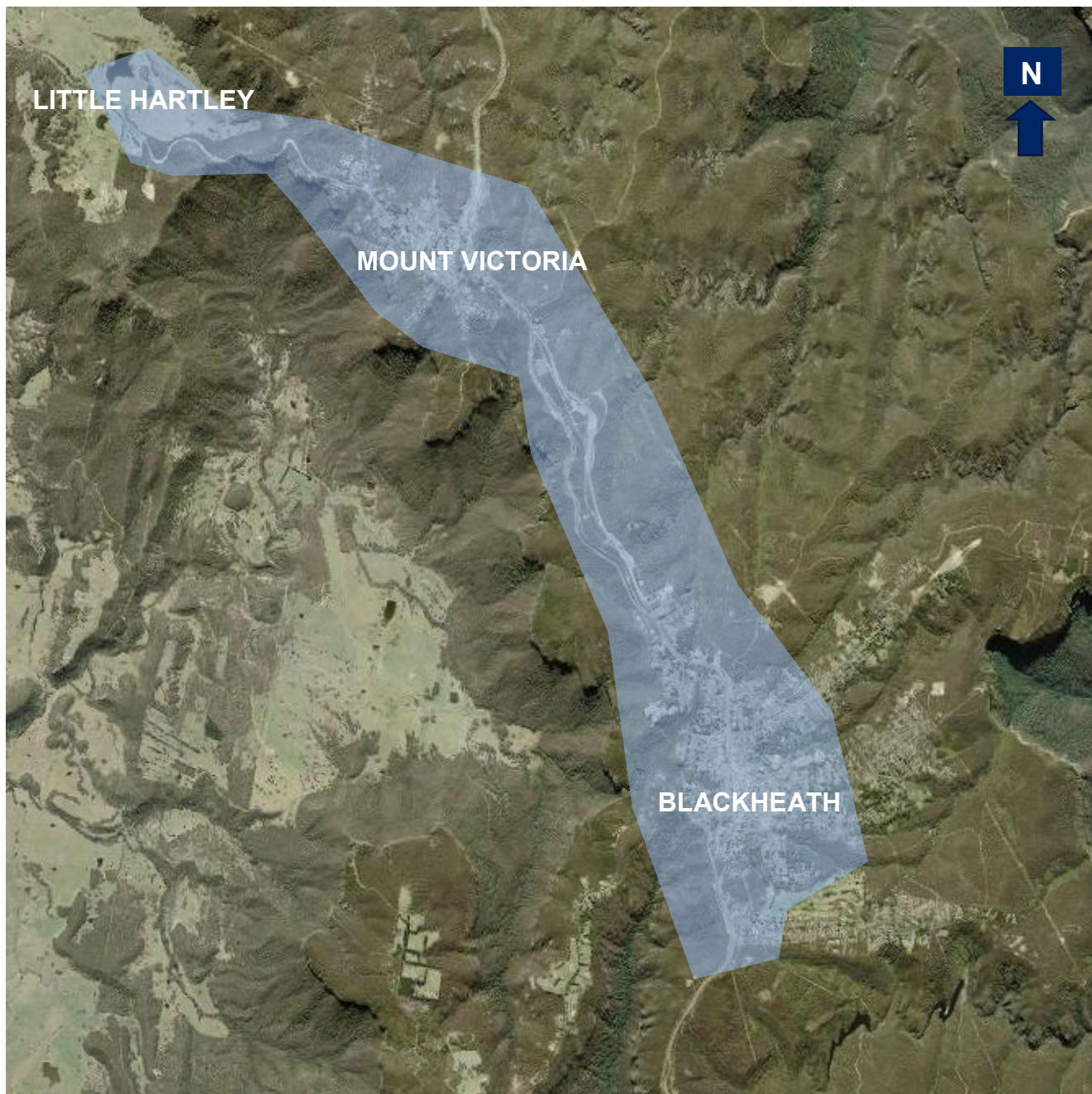
For the latest traffic updates, you can call 132 701, visit livetraffic.com or download the Live Traffic NSW App.

Contact

If you have any questions, please contact our project information line on 1800 953 777 or gwhd@transport.nsw.gov.au. For more information on our projects, visit nswroads.work/gwhd

Thank you for your patience during this important work.

Field investigations, Blackheath to Little Hartley



KEY  Survey area



If you need help understanding this information, please contact the Translating and Interpreting Service on 131 450 and ask them to call us on 1800 953 777.