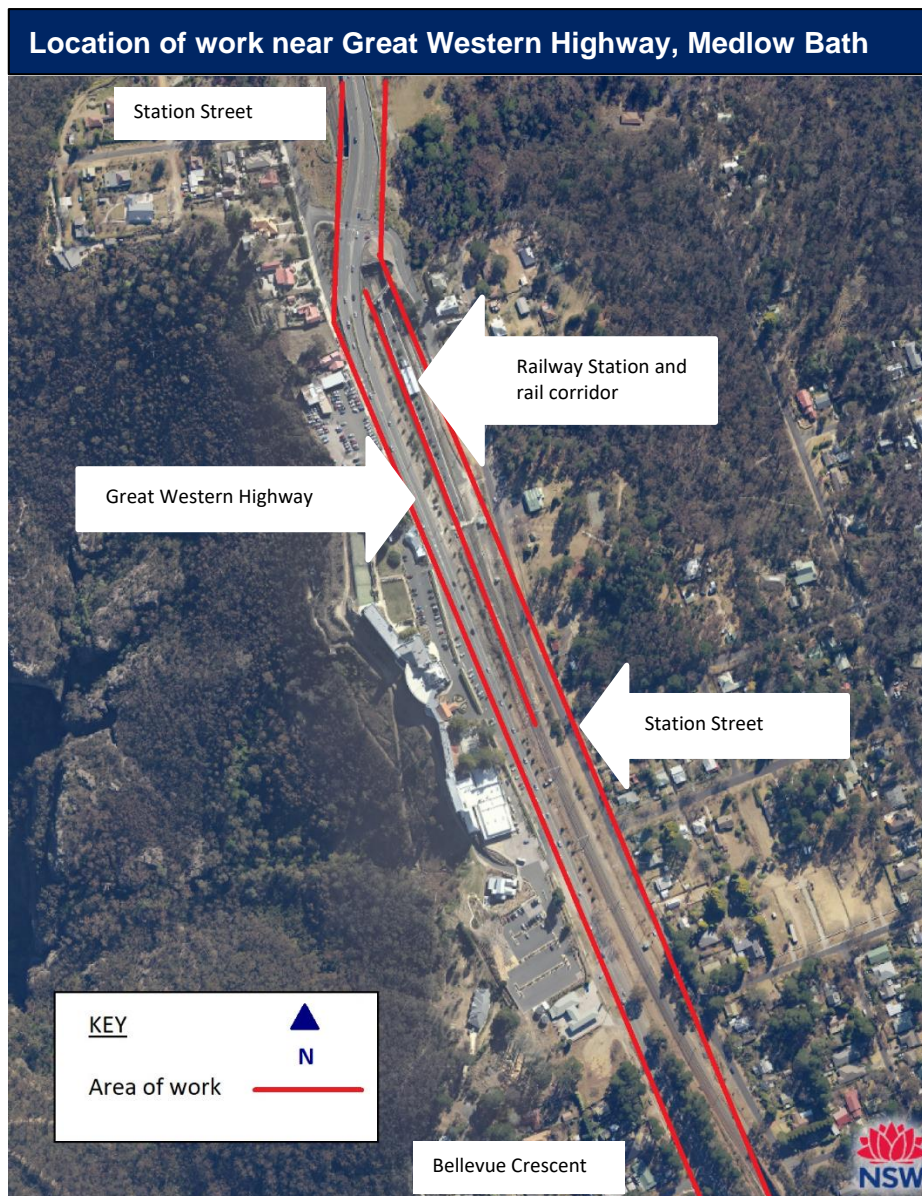


Out of hours work near Great Western Highway, Medlow Bath Saturday 27 and Sunday 28 February 2021

Transport for NSW is carrying out geotechnical investigations and survey works as part of the Great Western Highway Upgrade Program.



Transport for NSW will carry out this work, which will include investigation of ground conditions and surveying of site features. The map above shows the approximate areas of the work, in red.

There will be up to 2 shifts of day work between Saturday 27 February and Sunday 28 February however this may change due to weather and environmental conditions.

Our work hours will be between 7am and 6pm.

We will notify you in advance if we need to do any work outside of these hours.

How will the work affect you?

To maintain the safety of our customers and staff, this work will be completed during scheduled Sydney Trains track work, when train services will not be operating and the station platform will be closed to customers from both the footbridge and level crossing.

The level crossing at the station will be intermittently unavailable for pedestrians while plant is moved on/off the platform and tracks.

Please visit transportnsw.info or call 131 500 for information about replacement buses during this time.

There will be some noise associated with this work, but every effort will be made to minimise the impact on residents.

Contact

If you have any questions about the works, please contact Transport for NSW on 1800 953 777 or gwhd@transport.nsw.gov.au.

For more information on our projects, visit nswroads.work/greatwesternhighway. Thank you for your patience during this important work.



If you need help understanding this information, please contact the Translating and Interpreting Service on 131 450 and ask them to call 1800 953 777.