



Australian Government

**BUILDING OUR FUTURE**



# Katoomba to Mount Victoria safety upgrade – Blackheath

## Project update

November 2018



Artists impression – looking West at Govetts Leap Road and Bundarra Street Intersection at Blackheath

The Australian and New South Wales governments are upgrading the Great Western Highway between Katoomba and Lithgow for easier, faster and safer travel between Katoomba and Lithgow.

Roads and Maritime Services has finalised the design for the upgrade at Blackheath and is ready to start major work.

This is the final section of work to be delivered under the \$250 million Katoomba to Lithgow safety upgrades package. Road users are experiencing safer journeys and improved travel times from completed upgrades now open to traffic at Forty Bends, Hartley Valley and Mount Victoria village.

Major work on the project is expected to start in November 2018 and the upgrade is expected to be open to traffic in late 2019, weather permitting.

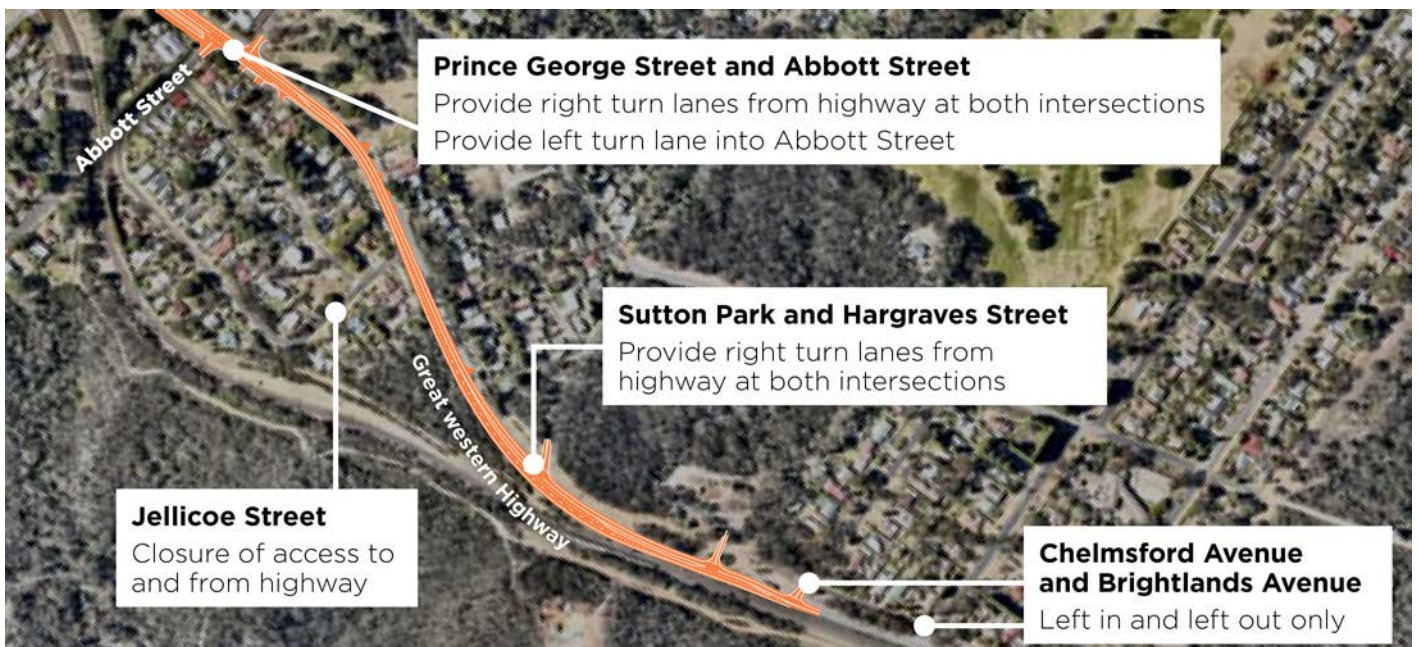
### Project benefits

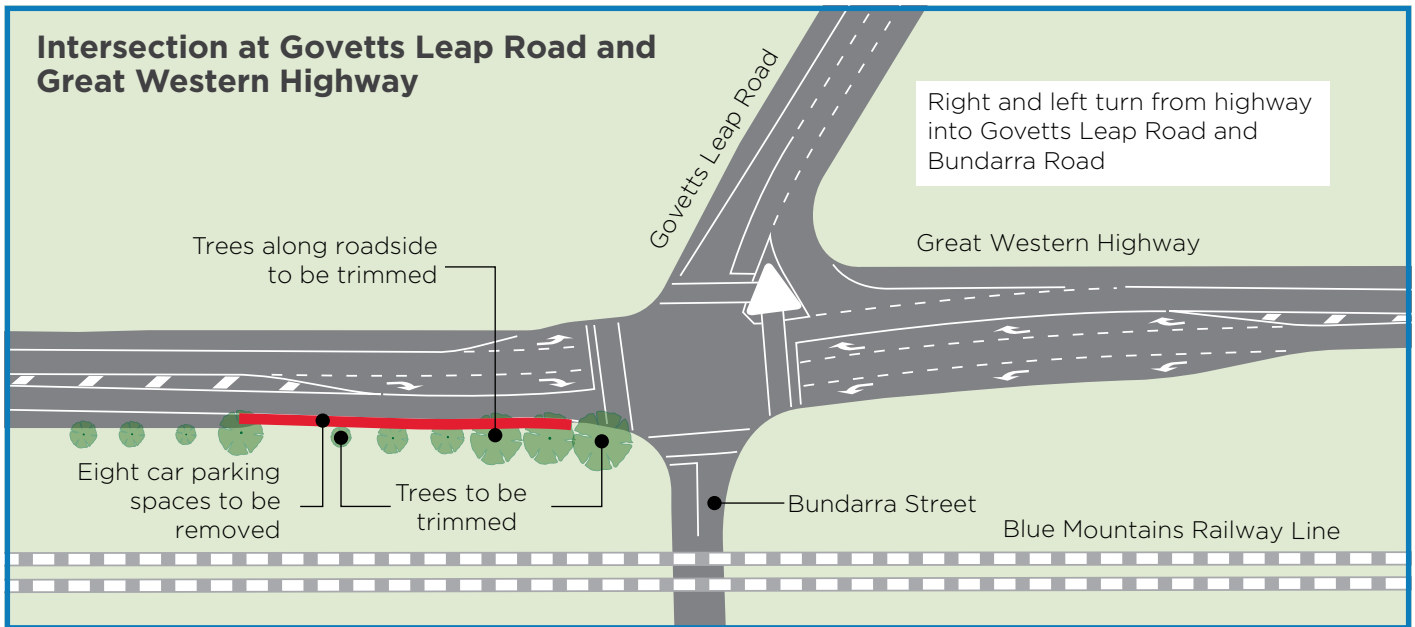
The safety upgrade will improve traffic flow and road user safety at 13 intersections along the Great Western Highway, including the major intersection in Blackheath of Great Western Highway, Govetts Leap Road and Bundarra Street.

The final design for the intersection includes right and left turn bays to:

- reduce rear end crashes by moving vehicles waiting to turn right out of the path of through traffic
- improve traffic flow, allowing drivers to travel through Blackheath at a consistent and safer speed

## Proposed intersection work





## Blackheath safety improvements

Roads and Maritime is improving road safety in Blackheath by widening the highway shoulders and providing dedicated turn lanes and other safety work.

Safety improvements at Blackheath will include:

- left in and left out at Brightlands Avenue, Chelmsford Avenue, Leichhardt Street, Sturt Street and Sutton Lane
- restricting right turns out of Prince George Street
- improving access to local roads at other intersections with right turn bays at:
  - Sutton Park
  - Hargraves Road
  - Prince George Street
  - Abbott Street
  - Govetts Leap Road
  - Gardiner Crescent
  - Hat Hill Road
- removing of some trees around Abbott Street, Prince George Street, Sutton Park and Jellicoe Street
- dedicated right and left turn bays from Great Western Highway to Govetts Leap Road and Bundarra Street
- closing access from Great Western Highway to Jellicoe Street
- providing wider road shoulders.

## What will happen during the work?

Standard working hours on the project will be between **7am and 6pm Monday to Friday** and **9am to 1pm on Saturdays**. Night work may be required and residents and businesses will be informed before any night work starts.

Roads and Maritime is committed to working with the community and will try to minimise the impact to nearby properties and traffic on the highway while work is being carried out. Access to properties will be maintained.

## Site compound

The site compound for the project is located alongside Great Western Highway, between Chelmsford Avenue and Hargraves Street at Blackheath, next to the Sutton Park rest area.

The site compound is used for:

- site office and amenities for project staff
- storing containers and materials
- car and construction vehicle parking
- delivery of plant and equipment.



Artists impression – looking West at Abott Street Intersection

## Trees and landscaping

Roads and Maritime has carried out significant community consultation and engaged an independent arborist to review the intersection at Great Western Highway, Govetts Leap Road and Bundarra Street.

The arborist advised all the trees at the intersection should be able to be retained, however a final decision will be made when excavation work is carried out.

Every effort has been made to minimise the loss of trees associated with the road safety upgrade however some trees need to be removed to improve safety.

Trees removed during work will be replaced in line with Council's landscaping guidelines, where feasible.

During the detailed project design, an arboricultural impact assessment was carried out to determine the impact on street trees. This assessment has also helped to inform the final project design.

Based on the arborist assessment, Roads and Maritime has prepared a summary report which includes artists' impressions of before and after photographs of the proposed work, including tree trimming at Govetts Leap Road and planting replacement trees near the Abbott Street intersection, between Hargraves and Abbott Streets and the rest area near Chelmsford Avenue.

This report is included in the addendum REF which is published on Roads and Maritime website.

## Parking in Blackheath

The safety upgrade work includes widening the Great Western Highway through Blackheath. To improve road user safety Roads and Maritime will implement 30 degree angle parking near the Memorial. There will be some loss of parking on the westbound lanes near the shops, due to road widening.

Parking will also be affected on the highway while road construction and utility relocation work is carried out in the area. Roads and Maritime is committed to working closely with local businesses to minimise disruption.

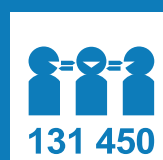
### Contact details

✉ Private Mail Bag 191, Bowenfels NSW 2790

☎ Contact the team directly on 1800 035 733

@ K2Lupgrade@rms.nsw.gov.au

💻 More information is available at [rms.nsw.gov.au/projects/western-nsw/katoomba-lithgow/katoomba-to-mount-victoria.html](https://rms.nsw.gov.au/projects/western-nsw/katoomba-lithgow/katoomba-to-mount-victoria.html)



You need help understanding this information, please contact the Translating and Interpreting Service on 131 450 and ask them to call us on 1800 035 733.



November 2018  
RMS.18.1084

**Privacy** Roads and Maritime Services ("RMS") is subject to the Privacy and Personal Information Protection Act 1998 ("PIIP Act") which requires that we comply with the Information Privacy Principles set out in the PIIP Act. All information in correspondence is collected for the sole purpose of assisting in the delivery of this project. The information received, including names and addresses of respondents, may be published in subsequent documents unless a clear indication is given in the correspondence that all or part of that information is not to be published. Otherwise RMS will only disclose your personal information, without your consent, if authorised by the law. Your personal information will be held by RMS at 27 Argyle Street, Parramatta. You have the right to access and correct the information if you believe that it is incorrect.